



**See the Edge in Every Race**  
**REMINGTON PARK 05/21/2026**

How to Use Smart Sheets → <https://horseracingtoday.net/wp-content/uploads/2026/03/HRTSmartSheetsExplanations.pdf>

Race	Distance	Surface	Race Type	Purse
<a href="#">Race 1</a>	330 Yards	Dirt	Claiming	\$13,000
<a href="#">Race 2</a>	250 Yards	Dirt	Maiden Claiming	\$19,000
<a href="#">Race 3</a>	330 Yards	Dirt	Maiden Special Weight	\$25,500
<a href="#">Race 4</a>	250 Yards	Dirt	Maiden Claiming	\$19,000
<a href="#">Race 5</a>	300 Yards	Dirt	Claiming	\$24,000
<a href="#">Race 6</a>	250 Yards	Dirt	Maiden Claiming	\$19,000
<a href="#">Race 7</a>	330 Yards	Dirt	Maiden Special Weight	\$25,500
<a href="#">Race 8</a>	2 Furlongs	Dirt	Maiden Special Weight	\$25,500
<a href="#">Race 9</a>	350 Yards	Dirt	Maiden Claiming	\$24,500
<a href="#">Race 10</a>	250 Yards	Dirt	Allowance	\$29,000
<a href="#">Race 11</a>	330 Yards	Dirt	Allowance	\$42,500
<a href="#">Race 12</a>	250 Yards	Dirt	Allowance	\$29,000
<a href="#">Appendix</a>			Smart Sheets Reference Guide	

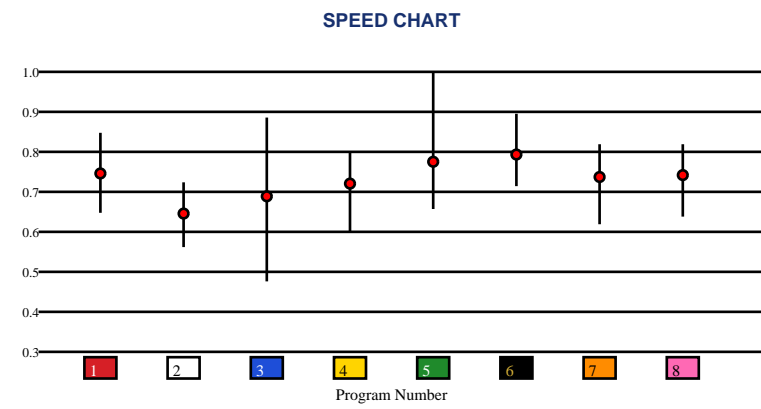


# REMINGTON PARK | 05/21/2026 | Race 1 | 330 Yards | Dirt | Claiming | Purse: \$13,000

Speed # Edge (>=3)		SIM Odds		SIM Speed #		1st Call Leader		Early Pace		Late Pace		Total Pace	
5	17	5	5/2	5	82.0	1	13.1%	5		5		5	
		3	7/2	1	81.7	3	12.8%	3		3		3	
		1	6-1	6	80.3	4	12.8%	1		1		1	
		7	7-1	7	80.1	5	12.7%	7		7		7	
		6	8-1	4	78.9	6	12.7%	6		6		6	
		4	10-1	8	78.5	2	12.4%	4		4		4	

Pace / Improvement / Times																				
No.	Horse	ML Odds	SIM Odds	PAR	PAR+	Early	Mid	Late	1/4	1/2	Class Move	Move by Lengths	1st Timer (3 Max)	Bullet & Go	Back Bullet	2nd Race Parability	Jockey Win	Jockey ITM	Trainer Win	Trainer ITM
1	MAMASLETTHEMBECOWBOYS	9/2	6-1	NO	0.0%												0.74	0.71	0.79	1.00
2	PT GLITZ	6-1	1001-1	NO	0.0%												0.59	0.50	0.74	0.82
3	TAKI	20-1	7/2	NO	0.0%												0.90	0.82	0.56	0.67
4	PAINTED FURY	6-1	10-1	NO	0.0%												0.83	0.63	0.29	0.51
5	RIVER FLOWER	8-1	5/2	NO	0.0%												0.45	0.58	0.19	0.57
6	TO THE WIRE	4-1	8-1	NO	0.0%												1.00	1.00	1.00	1.00
7	JH BLOOD SWEATANDTEAR	5-1	7-1	NO	0.0%												0.29	0.63	0.64	0.88
8	RUN FOR MILES	5/2	25-1	NO	0.0%												0.94	0.64	0.74	0.82

No.	CZone %	E (CZ%)	EP (CZ%)	P (CZ%)	PC (CZ%)	C (CZ%)	ANY (CZ%)	N/A (CZ%)	1st
1	0.0%							1 (0.0%)	
2	0.0%							2 (0.0%)	
3	0.0%							3 (0.0%)	
4	0.0%							4 (0.0%)	
5	0.0%							5 (0.0%)	
6	0.0%							6 (0.0%)	
								7 (0.0%)	
								8 (0.0%)	





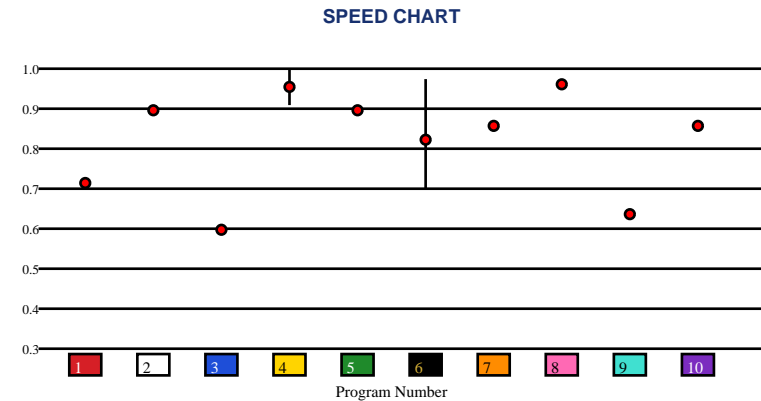
# REMINGTON PARK | 05/21/2026 | Race 2 | 250 Yards | Dirt | Maiden Claiming | Purse: \$19,000

Speed # Edge (>=3)		SIM Odds		SIM Speed #		1st Call Leader		Early Pace		Late Pace		Total Pace	
4	3	4	1-1	4	73.6	8	11.3%	4		4		4	
		6	7-1	5	69.0	7	10.5%	8		8		8	
		8	16-1	9	66.5	1	10.4%	7		7		7	
		1	16-1	1	66.3	9	10.3%	2		2		2	
		9	17-1	2	66.2	6	10.1%	6		6		6	
		3	18-1	10	66.2	10	9.6%	5		5		5	

## Pace / Improvement / Times

No.	Horse	ML Odds	SIM Odds	PAR	PAR+	Early	Mid	Late	1/4	1/2	Class Move	Move by Lengths	1st Timer (3 Max)	Bullet & Go	Back Bullet	2nd Race Parability	Jockey Win	Jockey ITM	Trainer Win	Trainer ITM
1	MINDSET	10-1	16-1	NO	0.0%												1.00	1.00	0.64	0.91
2	BP CHARLIE CHICK	7/2	21-1	NO	0.0%												0.52	0.71	1.00	1.00
3	KISER	12-1	18-1	NO	0.0%												0.27	0.57	0.64	0.69
4	BYE BYE MONDAY	5/2	1-1	NO	0.0%												0.51	0.48	0.76	0.92
5	DANGEROUS DJ	8-1	124-1	NO	0.0%												0.29	0.57	0.27	0.56
6	JRS POP A TOP	15-1	7-1	NO	0.0%												0.44	0.31	0.10	0.69
7	KISSMEIFYOUKAN	5-1	28-1	NO	0.0%												0.42	0.68	0.73	0.72
8	LETS GO FANCY	6-1	16-1	NO	0.0%												0.45	0.66	0.19	0.70
9	LIGHT UP THE CHERRY	15-1	17-1	NO	0.0%												0.29	0.39	0.68	0.67
10	EASY MONEE	15-1	20-1	NO	0.0%												0.24	0.48	0.40	0.52

No.	CZone %	E (CZ%)	EP (CZ%)	P (CZ%)	PC (CZ%)	C (CZ%)	ANY (CZ%)	N/A (CZ%)	1st
1	0.0%							1 (0.0%)	
2	0.0%							2 (0.0%)	
3	0.0%							3 (0.0%)	
4	0.0%							4 (0.0%)	
5	0.0%							5 (0.0%)	
6	0.0%							6 (0.0%)	
								7 (0.0%)	
								8 (0.0%)	
								9 (0.0%)	
								10 (0.0%)	



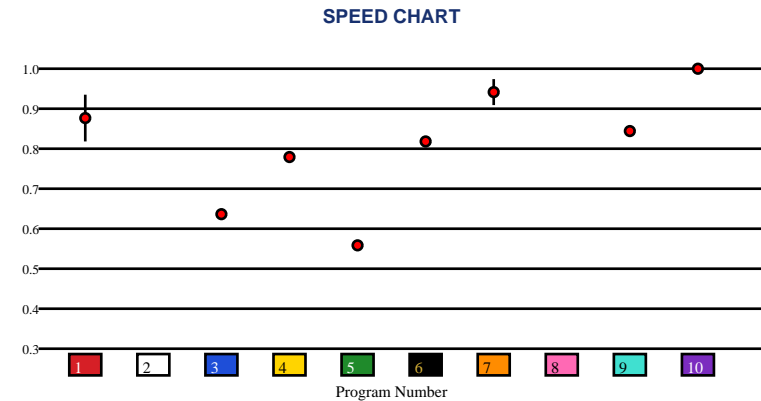


# REMINGTON PARK | 05/21/2026 | Race 3 | 330 Yards | Dirt | Maiden Special Weight | Purse: \$25,500

Speed # Edge (>=3)	SIM Odds		SIM Speed #		1st Call Leader		Early Pace		Late Pace		Total Pace	
7	5-1	7	72.3	2	11.3%	7	7	7	7	7	7	
8	8-1	8	70.2	1	10.9%	8	8	8	8	8	8	
2	8-1	2	70.0	9	10.2%	2	2	2	2	2	2	
9	9-1	5	70.0	5	10.1%	10	10	10	10	10	10	
5	9-1	10	69.9	6	10.0%	9	9	9	9	9	9	
4	10-1	9	69.8	4	9.9%	4	4	4	4	4	4	

Pace / Improvement / Times																				
No.	Horse	ML Odds	SIM Odds	PAR	PAR+	Early	Mid	Late	1/4	1/2	Class Move	Move by Lengths	1st Timer (3 Max)	Bullet & Go	Back Bullet	2nd Race Parability	Jockey Win	Jockey ITM	Trainer Win	Trainer ITM
1	RR LOTTA ROYAL LOVE	6-1	25-1	NO	0.0%												1.00	1.00	1.00	1.00
2	WRS SHADOW DANCER	12-1	8-1	NO	0.0%								0.33				0.39	0.59	0.17	0.55
3	FAVORITE DREAM GIRL	15-1	10-1	NO	0.0%												0.41	0.72	0.67	0.73
4	SYDNEY 400	7/2	10-1	NO	0.0%												0.36	0.61	0.32	0.56
5	TS CYBER HUNNY	15-1	9-1	NO	0.0%												0.25	0.51	0.52	0.32
6	OBSESSSION	15-1	10-1	NO	0.0%												0.30	0.54	0.78	0.92
7	JUSK A DYNASTY	5/2	5-1	NO	0.0%												0.40	0.82	0.47	0.87
8	THATS A FAST PITCH	10-1	8-1	NO	0.0%								1.67				0.37	0.66	0.61	0.67
9	CANT B ME	5-1	9-1	NO	0.0%												0.28	0.44	0.44	0.48
10	IT HOUSTON	8-1	11-1	NO	0.0%												0.36	0.67	0.27	0.59

No.	CZone %	E (CZ%)	EP (CZ%)	P (CZ%)	PC (CZ%)	C (CZ%)	ANY (CZ%)	N/A (CZ%)	1st
1	0.0%							1 (0.0%)	2
2	0.0%							3 (0.0%)	8
3	0.0%							4 (0.0%)	
4	0.0%							5 (0.0%)	
5	0.0%							6 (0.0%)	
6	0.0%							7 (0.0%)	
								9 (0.0%)	
								10 (0.0%)	



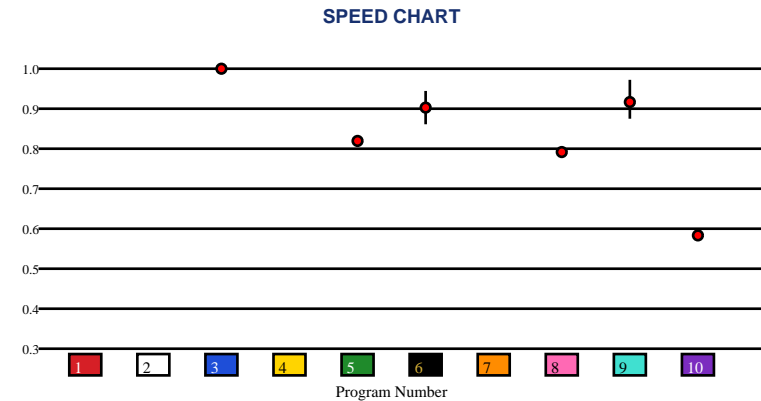


# REMINGTON PARK | 05/21/2026 | Race 4 | 250 Yards | Dirt | Maiden Claiming | Purse: \$19,000

Speed # Edge (>=3)	SIM Odds		SIM Speed #		1st Call Leader		Early Pace		Late Pace		Total Pace	
	10	7-1	4	66.2	5	10.3%	4		4		4	
	5	8-1	10	66.1	3	10.2%	5		5		5	
	2	8-1	9	66.1	7	10.2%	3		3		3	
	8	8-1	5	66.1	6	10.1%	9		9		9	
	3	8-1	7	66.0	1	10.1%	2		2		2	
	4	8-1	3	66.0	8	10.0%	7		7		7	

Pace / Improvement / Times																				
No.	Horse	ML Odds	SIM Odds	PAR	PAR+	Early	Mid	Late	1/4	1/2	Class Move	Move by Lengths	1st Timer (3 Max)	Bullet & Go	Back Bullet	2nd Race Parability	Jockey Win	Jockey ITM	Trainer Win	Trainer ITM
1	PR DOT	10-1	9-1	NO	0.0%								0.33				0.44	0.65	0.52	0.76
2	TEMPTING VALENTINE	12-1	8-1	NO	0.0%								0.33				0.13	0.74	0.31	0.49
3	EL MOUSTRO	15-1	8-1	NO	0.0%												0.39	0.69	0.66	0.70
4	EOS TOUGH GUY	5/2	8-1	NO	0.0%								1.67				1.00	1.00	1.00	0.91
5	PHUN LOVIN	6-1	8-1	NO	0.0%												0.62	0.82	0.32	0.56
6	LUCKY ONE TWO C	8-1	21-1	NO	0.0%												0.33	0.76	0.46	1.00
7	DAUNTLESS DA	7/2	9-1	NO	0.0%								1.67				0.70	0.84	0.82	0.90
8	CYBER CHOO CHOO	15-1	8-1	NO	0.0%												0.73	0.94	0.21	0.76
9	RELENTLESS ECLIPSE	9/2	11-1	NO	0.0%												0.68	0.98	0.71	0.99
10	MISS MOLLIE	20-1	7-1	NO	0.0%												0.53	0.71	0.22	0.53

No.	CZone %	E (CZ%)	EP (CZ%)	P (CZ%)	PC (CZ%)	C (CZ%)	ANY (CZ%)	N/A (CZ%)	1st
1	0.0%							3 (0.0%)	1
2	0.0%							5 (0.0%)	2
3	0.0%							6 (0.0%)	4
4	0.0%							8 (0.0%)	7
5	0.0%							9 (0.0%)	
6	0.0%							10 (0.0%)	





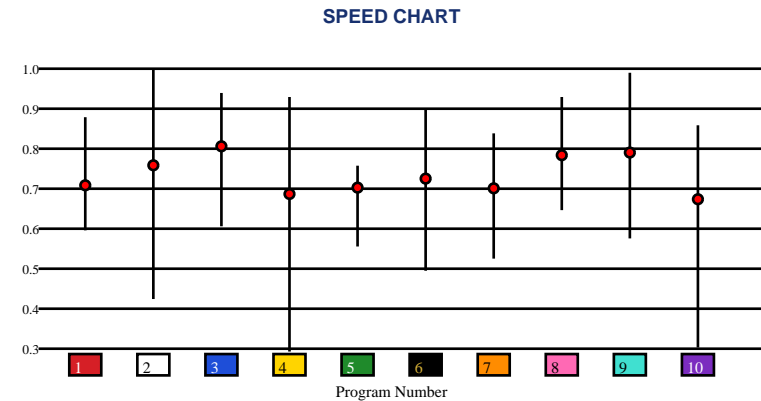
# REMINGTON PARK | 05/21/2026 | Race 5 | 300 Yards | Dirt | Claiming | Purse: \$24,000

Speed # Edge (>=3)		SIM Odds		SIM Speed #		1st Call Leader		Early Pace		Late Pace		Total Pace	
10	8	4	5/2	4	77.3	1	11.0%	4		4		4	
		10	4-1	10	73.2	2	10.7%	10		10		10	
		2	5-1	3	72.7	8	10.1%	2		2		2	
		9	11-1	5	72.4	10	10.0%	3		3		3	
		3	12-1	8	70.9	6	10.0%	9		9		9	
		6	20-1	9	69.7	7	10.0%	5		5		5	

## Pace / Improvement / Times

No.	Horse	ML Odds	SIM Odds	PAR	PAR+	Early	Mid	Late	1/4	1/2	Class Move	Move by Lengths	1st Timer (3 Max)	Bullet & Go	Back Bullet	2nd Race Parability	Jockey Win	Jockey ITM	Trainer Win	Trainer ITM
1	WARRIORS MOONSHINE	10-1	36-1	NO	0.0%												0.42	0.68	1.00	0.61
2	RARE REINA	15-1	5-1	NO	0.0%												0.08	0.22	0.61	0.13
3	IMA FANCY CHROME	3-1	12-1	NO	0.0%												1.00	1.00	0.61	0.63
4	WAGON FULLA ETHICS	6-1	5/2	NO	0.0%												0.42	0.57	0.42	0.61
5	JESS SAY GOODBYE	10-1	33-1	NO	0.0%												0.51	0.48	0.80	0.82
6	SASHAY LIGHTZ	15-1	20-1	NO	0.0%												0.61	0.83	0.80	0.82
7	SM EYESA COUNTRY MAN	9/2	70-1	NO	0.0%												0.45	0.66	0.24	0.63
8	MB MISS JULISCO	8-1	27-1	NO	0.0%												0.52	0.71	0.35	0.41
9	DUANES GOLD WAGON	15-1	11-1	NO	0.0%												0.24	0.48	0.61	0.63
10	REDNECK FUN	7/2	4-1	NO	0.0%												0.08	0.52	0.66	1.00

No.	CZone %	E (CZ%)	EP (CZ%)	P (CZ%)	PC (CZ%)	C (CZ%)	ANY (CZ%)	N/A (CZ%)	1st
1	0.0%							1 (0.0%)	
2	0.0%							2 (0.0%)	
3	0.0%							3 (0.0%)	
4	0.0%							4 (0.0%)	
5	0.0%							5 (0.0%)	
6	0.0%							6 (0.0%)	
								7 (0.0%)	
								8 (0.0%)	
								9 (0.0%)	
								10 (0.0%)	



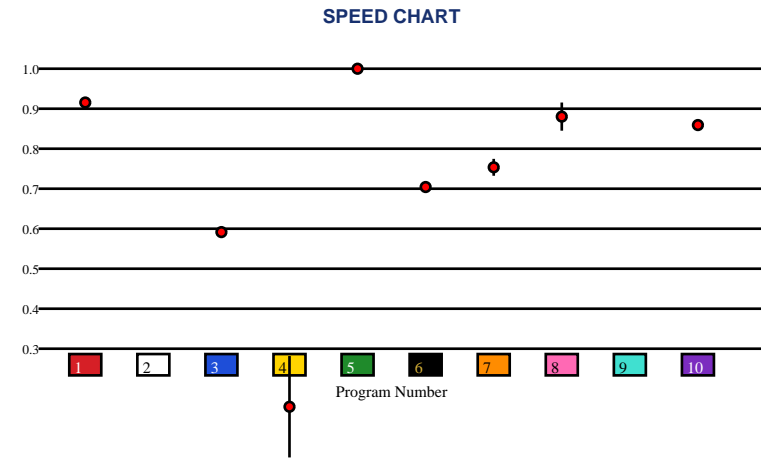


# REMINGTON PARK | 05/21/2026 | Race 6 | 250 Yards | Dirt | Maiden Claiming | Purse: \$19,000

Speed # Edge (>=3)		SIM Odds		SIM Speed #		1st Call Leader		Early Pace		Late Pace		Total Pace	
5	6	1	5-1	6	70.2	10	11.4%	5		5		5	
		6	6-1	3	70.2	4	10.6%	1		1		1	
		3	6-1	10	70.1	7	10.3%	10		10		10	
		10	6-1	1	70.1	1	10.3%	8		8		8	
		9	6-1	5	70.1	5	10.2%	7		7		7	
		5	6-1	9	70.1	9	9.6%	6		6		6	

Pace / Improvement / Times																				
No.	Horse	ML Odds	SIM Odds	PAR	PAR+	Early	Mid	Late	1/4	1/2	Class Move	Move by Lengths	1st Timer (3 Max)	Bullet & Go	Back Bullet	2nd Race Parability	Jockey Win	Jockey ITM	Trainer Win	Trainer ITM
1	THE MASTER PAINTER	6-1	5-1	NO	0.0%												0.68	0.75	0.46	1.00
2	JB CHATA	15-1	7-1	NO	0.0%								0.33				0.39	0.53	0.36	0.70
3	SIZZLIN SAMMY	8-1	6-1	NO	0.0%												0.73	0.72	0.38	0.75
4	RELENTLESSLY H	15-1	1001-1	NO	0.0%												0.69	0.62	1.00	0.73
5	REDS WAGON	5/2	6-1	NO	0.0%												0.33	0.58	0.22	0.47
6	ONE SWEET LIL LADY	12-1	6-1	NO	0.0%												1.00	0.76	0.42	0.81
7	JB QUEEN BLUE	7/2	1001-1	NO	0.0%												0.53	0.54	0.40	0.72
8	DADDYS BOI LO	10-1	1001-1	NO	0.0%												0.75	1.00	0.34	0.76
9	IZA B SLICK	15-1	6-1	NO	0.0%								0.33				0.13	0.57	0.24	0.75
10	COUNTRY HIGH	5-1	6-1	NO	0.0%												0.44	0.50	0.18	0.55

No.	CZone %	E (CZ%)	EP (CZ%)	P (CZ%)	PC (CZ%)	C (CZ%)	ANY (CZ%)	N/A (CZ%)	1st
1	0.0%							1 (0.0%)	2
2	0.0%							3 (0.0%)	9
3	0.0%							4 (0.0%)	
4	0.0%							5 (0.0%)	
5	0.0%							6 (0.0%)	
6	0.0%							7 (0.0%)	
								8 (0.0%)	
								10 (0.0%)	



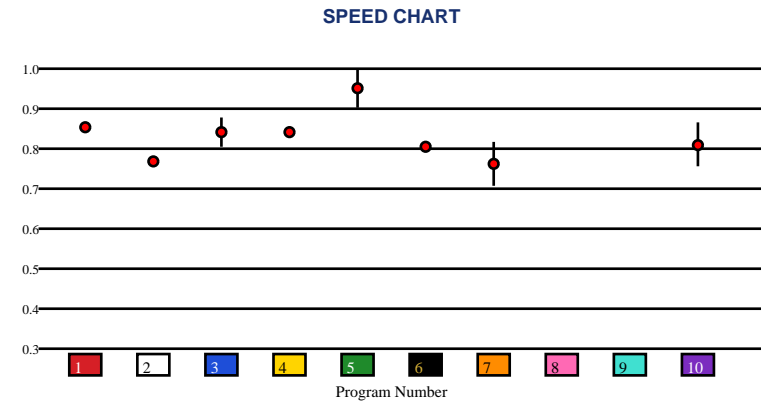


REMINGTON PARK | 05/21/2026 | Race 7 | 330 Yards | Dirt | Maiden Special Weight | Purse: \$25,500

Speed # Edge (>=3)		SIM Odds		SIM Speed #		1st Call Leader		Early Pace		Late Pace		Total Pace	
5	4	5	1/7	5	78.0 (+9)	5	11.0%	5		5		5	
		3	19-1	3	68.9	7	10.6%	4		4		4	
		10	35-1	10	66.6	8	10.5%	3		3		3	
		9	76-1	1	66.3	3	10.4%	2		2		2	
		1	90-1	2	66.3	9	10.1%	6		6		6	
		2	99-1	9	66.3	1	10.1%	7		7		7	

Pace / Improvement / Times																				
No.	Horse	ML Odds	SIM Odds	PAR	PAR+	Early	Mid	Late	1/4	1/2	Class Move	Move by Lengths	1st Timer (3 Max)	Bullet & Go	Back Bullet	2nd Race Parability	Jockey Win	Jockey ITM	Trainer Win	Trainer ITM
1	APOLLITICAL TWIN C	8-1	90-1	NO	0.0%												0.61	0.65	0.64	0.68
2	KISSING JUNIPER	12-1	99-1	NO	0.0%												0.84	0.70	0.59	0.59
3	LA SICCARIA	7/2	19-1	NO	0.0%												0.56	0.75	1.00	0.91
4	LACYLYN	4-1	110-1	NO	0.0%												0.59	0.65	0.59	0.67
5	MW WISHYOUHADAHERO	5/2	1/7	NO	0.0%												1.00	1.00	0.96	1.00
6	GALVINIZED	20-1	1001-1	NO	0.0%												0.18	0.57	0.64	0.75
7	AR EAGLE	20-1	1001-1	NO	0.0%												0.62	0.91	0.75	0.92
8	ELUSIVE MEMORIES	15-1	99-1	NO	0.0%								0.33				0.65	0.80	0.64	0.53
9	JESS A LAST CHANCE	12-1	76-1	NO	0.0%								0.33				0.24	0.46	0.31	0.24
10	PYC SIVAKO	6-1	35-1	NO	0.0%												0.35	0.61	0.30	0.52

No.	CZone %	E (CZ%)	EP (CZ%)	P (CZ%)	PC (CZ%)	C (CZ%)	ANY (CZ%)	N/A (CZ%)	1st
1	0.0%							1 (0.0%)	8
2	0.0%							2 (0.0%)	9
3	0.0%							3 (0.0%)	
4	0.0%							4 (0.0%)	
5	0.0%							5 (0.0%)	
6	0.0%							6 (0.0%)	
								7 (0.0%)	
								10 (0.0%)	



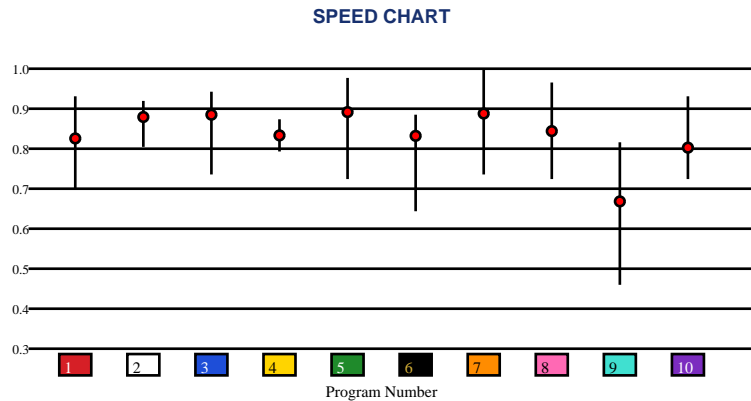


# REMINGTON PARK | 05/21/2026 | Race 8 | 2 Furlongs | Dirt | Maiden Special Weight | Purse: \$25,500

Speed # Edge (>=3)	SIM Odds		SIM Speed #		1st Call Leader		Early Pace		Late Pace		Total Pace	
3	5/2	3	80.7	2	11.4%	3	3	3	3	3	3	
5	5/2	5	80.4	1	11.1%	5	5	5	5	5	5	
7	5-1	2	78.7	9	10.5%	7	7	7	7	7	7	
8	11-1	7	76.2	7	10.5%	4	4	4	4	4	4	
2	11-1	8	75.5	5	9.9%	8	8	8	8	8	8	
10	19-1	10	73.6	4	9.8%	2	2	2	2	2	2	

Pace / Improvement / Times																				
No.	Horse	ML Odds	SIM Odds	PAR	PAR+	Early	Mid	Late	1/4	1/2	Class Move	Move by Lengths	1st Timer (3 Max)	Bullet & Go	Back Bullet	2nd Race Parability	Jockey Win	Jockey ITM	Trainer Win	Trainer ITM
1	FAST PRIZE MANSON	12-1	62-1	NO	0.0%												0.37	0.51	0.38	0.42
2	VALIANT LIGHTS	15-1	11-1	NO	0.0%												0.39	0.59	1.00	0.66
3	AJS TRES OF PAINT JR	5/2	5/2	NO	0.0%												1.00	1.00	0.82	1.00
4	SHEZA VIOLENT EAGLE	6-1	1001-1	NO	0.0%												0.45	0.63	0.19	0.44
5	BTD PAINTED RIVANNE	8-1	5/2	NO	0.0%												0.29	0.58	0.47	0.61
6	GENTLEMAN 727	15-1	999-1	NO	0.0%												0.21	0.43	0.29	0.41
7	I WANT A LAWYER	7/2	5-1	NO	0.0%												0.40	0.82	0.38	0.87
8	Z REXX	5-1	11-1	NO	0.0%												0.36	0.67	0.40	0.53
9	SS ONE CHANCE FANCY	20-1	332-1	NO	0.0%												0.25	0.51	0.47	0.61
10	HOCK MY WAGON	10-1	19-1	NO	0.0%												0.36	0.61	0.26	0.56

No.	CZone %	E (CZ%)	EP (CZ%)	P (CZ%)	PC (CZ%)	C (CZ%)	ANY (CZ%)	N/A (CZ%)	1st
1	0.0%							1 (0.0%)	
2	0.0%							2 (0.0%)	
3	0.0%							3 (0.0%)	
4	0.0%							4 (0.0%)	
5	0.0%							5 (0.0%)	
6	0.0%							6 (0.0%)	
								7 (0.0%)	
								8 (0.0%)	
								9 (0.0%)	
								10 (0.0%)	



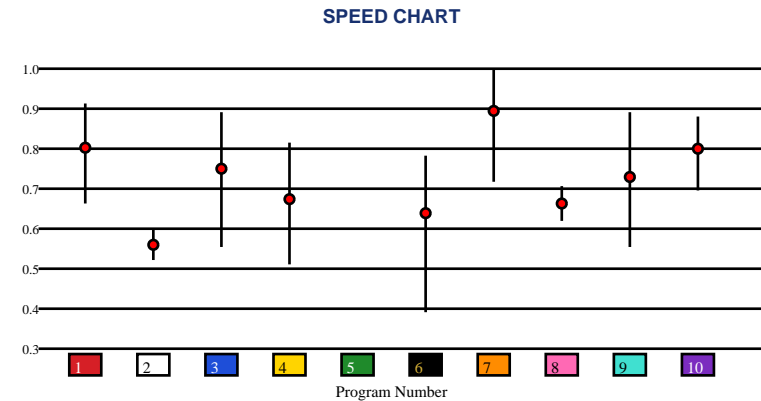


# REMINGTON PARK | 05/21/2026 | Race 9 | 350 Yards | Dirt | Maiden Claiming | Purse: \$24,500

Speed # Edge (>=3)		SIM Odds		SIM Speed #		1st Call Leader		Early Pace		Late Pace		Total Pace	
1	4	1	9/5	1	78.9	9	10.8%	1		1		1	
		7	3-1	7	77.2	4	10.5%	7		7		7	
		4	8-1	10	74.8	3	10.5%	10		10		10	
		10	8-1	5	70.0	1	10.1%	3		3		3	
		3	11-1	3	68.2	7	10.0%	4		4		4	
		5	19-1	4	67.2	2	9.9%	8		8		8	

Pace / Improvement / Times																				
No.	Horse	ML Odds	SIM Odds	PAR	PAR+	Early	Mid	Late	1/4	1/2	Class Move	Move by Lengths	1st Timer (3 Max)	Bullet & Go	Back Bullet	2nd Race Parability	Jockey Win	Jockey ITM	Trainer Win	Trainer ITM
1	KYCKSTART MY HEART	3-1	9/5	NO	0.0%												0.29	0.57	0.77	0.71
2	CORK A MILLION	15-1	1001-1	NO	0.0%												0.42	0.57	0.61	0.63
3	BP DOWN FANCY	5-1	11-1	NO	0.0%												1.00	1.00	0.40	0.55
4	ZEES DESPERADO	10-1	8-1	NO	0.0%												0.42	0.31	0.61	0.63
5	HEZ A POLKA	15-1	19-1	NO	0.0%								1.33				0.15	0.39	1.00	1.00
6	AJ CHAMP BLOOD	20-1	19-1	NO	0.0%												0.26	0.61	0.43	0.54
7	FLYING WIDE OPEN	9/2	3-1	NO	0.0%												0.24	0.48	0.61	0.63
8	JND LEBANON WON	12-1	1001-1	NO	0.0%												0.27	0.46	0.32	0.45
9	JR123	8-1	249-1	NO	0.0%												0.61	0.70	0.61	0.63
10	PAINTED RAIN	7/2	8-1	NO	0.0%												0.52	0.71	0.71	0.52

No.	CZone %	E (CZ%)	EP (CZ%)	P (CZ%)	PC (CZ%)	C (CZ%)	ANY (CZ%)	N/A (CZ%)	1st
1	0.0%							1 (0.0%)	5
2	0.0%							2 (0.0%)	
3	0.0%							3 (0.0%)	
4	0.0%							4 (0.0%)	
5	0.0%							6 (0.0%)	
6	0.0%							7 (0.0%)	
								8 (0.0%)	
								9 (0.0%)	
								10 (0.0%)	



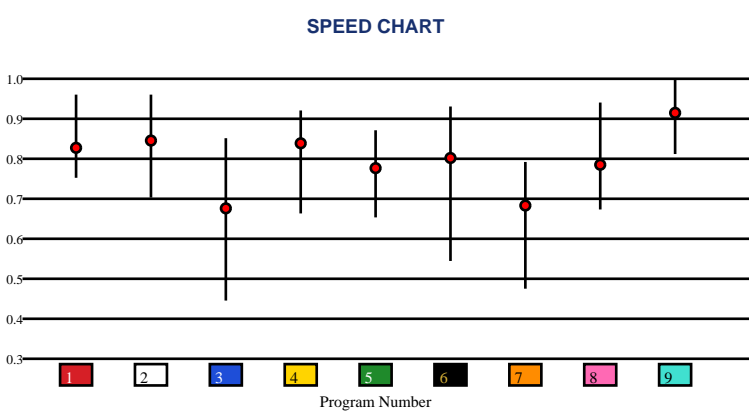


# REMINGTON PARK | 05/21/2026 | Race 10 | 250 Yards | Dirt | Allowance | Purse: \$29,000

Speed # Edge (>=3)		SIM Odds		SIM Speed #		1st Call Leader		Early Pace		Late Pace		Total Pace	
9	9	9	8/5	9	94.3 (+5)	8	11.9%	9		9		9	
		6	9/5	6	89.0	9	11.7%	6		6		6	
		1	6-1	1	87.2	5	11.6%	1		1		1	
		4	35-1	5	80.5	6	11.4%	4		4		4	
		5	39-1	4	79.6	1	11.1%	5		5		5	
		8	58-1	8	79.2	3	11.1%	2		2		2	

Pace / Improvement / Times																				
No.	Horse	ML Odds	SIM Odds	PAR	PAR+	Early	Mid	Late	1/4	1/2	Class Move	Move by Lengths	1st Timer (3 Max)	Bullet & Go	Back Bullet	2nd Race Parability	Jockey Win	Jockey ITM	Trainer Win	Trainer ITM
1	RR JESS A BIT EVIL	7/2	6-1	NO	0.0%												0.63	0.70	0.69	0.66
2	B A FLIRT	15-1	99-1	NO	0.0%												0.53	0.64	0.66	0.69
3	GOING SOUTH	15-1	70-1	NO	0.0%												0.56	0.55	0.66	0.44
4	GODZ SPEED	5/2	35-1	NO	0.0%												0.67	0.85	0.46	0.74
5	BYE TO YOU	6-1	39-1	NO	0.0%												1.00	1.00	0.37	0.61
6	FOREVER MIDNIGHT	4-1	9/5	NO	0.0%												0.87	0.93	1.00	0.91
7	JV GRAY PANTHER	15-1	82-1	NO	0.0%												0.73	0.81	0.73	0.58
8	ZOOMIN FOR BLOOD	5-1	58-1	NO	0.0%												0.47	0.68	0.45	0.57
9	MAD INDIAN	12-1	8/5	NO	0.0%												0.84	0.82	0.90	1.00

No.	CZone %	E (CZ%)	EP (CZ%)	P (CZ%)	PC (CZ%)	C (CZ%)	ANY (CZ%)	N/A (CZ%)	1st
1	0.0%							1 (0.0%)	
2	0.0%							2 (0.0%)	
3	0.0%							3 (0.0%)	
4	0.0%							4 (0.0%)	
5	0.0%							5 (0.0%)	
6	0.0%							6 (0.0%)	
								7 (0.0%)	
								8 (0.0%)	
								9 (0.0%)	



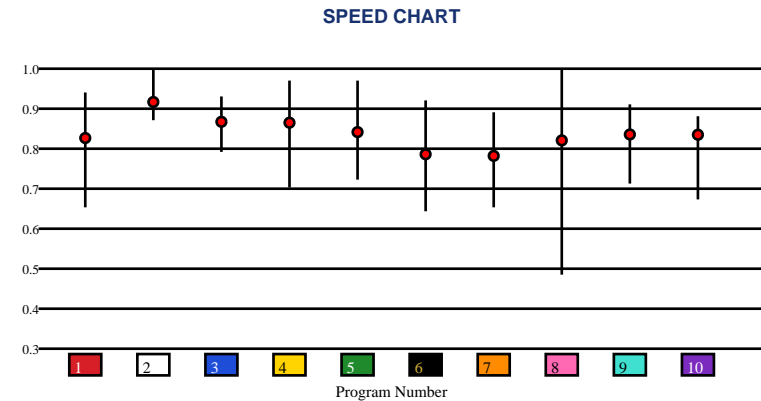


# REMINGTON PARK | 05/21/2026 | Race 11 | 330 Yards | Dirt | Allowance | Purse: \$42,500

Speed # Edge (>=3)	SIM Odds		SIM Speed #		1st Call Leader		Early Pace		Late Pace		Total Pace	
5	3-1		2	89.8	10	11.2%	5		5		5	
8	3-1		5	88.6	8	10.8%	8		8		8	
2	5-1		3	88.2	7	10.3%	2		2		2	
3	11-1		9	85.0	1	10.2%	10		10		10	
6	12-1		6	82.1	9	10.1%	3		3		3	
9	13-1		8	82.0	5	10.1%	4		4		4	

Pace / Improvement / Times																				
No.	Horse	ML Odds	SIM Odds	PAR	PAR+	Early	Mid	Late	1/4	1/2	Class Move	Move by Lengths	1st Timer (3 Max)	Bullet & Go	Back Bullet	2nd Race Parability	Jockey Win	Jockey ITM	Trainer Win	Trainer ITM
1	RARE ROY	20-1	166-1	NO	0.0%												0.42	0.74	0.76	0.49
2	APOLITICAL TIME	3-1	5-1	NO	0.0%												0.70	0.71	0.30	0.46
3	MISTAKIN IDENTITY	8-1	11-1	NO	0.0%												0.47	0.70	0.92	0.81
4	MR BOOMBASTIC	5-1	33-1	NO	0.0%												1.00	1.00	0.78	0.68
5	T BAR FABULOUS EAGLE	9/2	3-1	NO	0.0%												0.44	0.55	1.00	0.65
6	THE GOLD N ONE	15-1	12-1	NO	0.0%												0.76	0.96	0.83	1.00
7	JESS A FRENCHY GIRL	10-1	499-1	NO	0.0%												0.70	0.90	1.00	0.78
8	NAY BORHOOD NIPSEY	15-1	3-1	NO	0.0%												0.33	0.65	0.78	0.68
9	KOSMIC LIGHTS	12-1	13-1	NO	0.0%												0.62	0.70	0.42	0.47
10	HOLLIEWOOD	7/2	18-1	NO	0.0%												0.71	0.79	1.00	0.78

No.	CZone %	E (CZ%)	EP (CZ%)	P (CZ%)	PC (CZ%)	C (CZ%)	ANY (CZ%)	N/A (CZ%)	1st
1	0.0%							1 (0.0%)	
2	0.0%							2 (0.0%)	
3	0.0%							3 (0.0%)	
4	0.0%							4 (0.0%)	
5	0.0%							5 (0.0%)	
6	0.0%							6 (0.0%)	
								7 (0.0%)	
								8 (0.0%)	
								9 (0.0%)	
								10 (0.0%)	



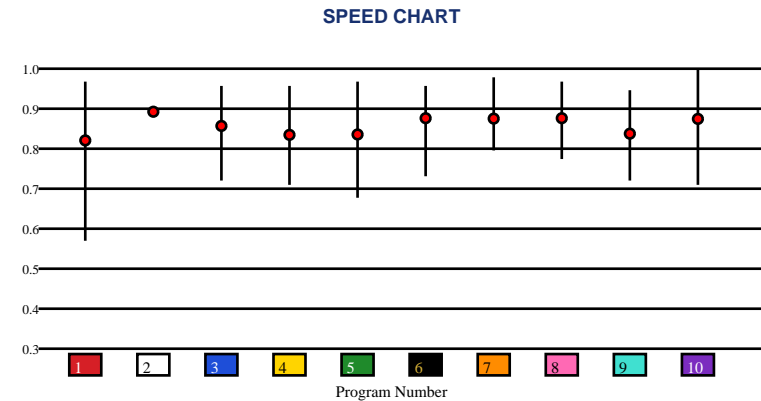


# REMINGTON PARK | 05/21/2026 | Race 12 | 250 Yards | Dirt | Allowance | Purse: \$29,000

Speed # Edge (>=3)	SIM Odds		SIM Speed #		1st Call Leader		Early Pace		Late Pace		Total Pace	
4	5/2	4	87.0	10	11.3%	4	4	4	4	4	4	
6	5-1	6	86.0	4	10.4%	2	2	2	2	2	2	
2	7-1	8	85.2	9	10.4%	3	3	3	3	3	3	
3	9-1	7	83.5	6	10.1%	6	6	6	6	6	6	
8	10-1	2	83.1	5	10.0%	7	7	7	7	7	7	
5	10-1	3	82.9	1	9.9%	5	5	5	5	5	5	

Pace / Improvement / Times																				
No.	Horse	ML Odds	SIM Odds	PAR	PAR+	Early	Mid	Late	1/4	1/2	Class Move	Move by Lengths	1st Timer (3 Max)	Bullet & Go	Back Bullet	2nd Race Parability	Jockey Win	Jockey ITM	Trainer Win	Trainer ITM
1	ARMOR OF GOD YG	15-1	142-1	NO	0.0%												0.56	0.77	1.00	1.00
2	FLYIN REBA 123	5-1	7-1	NO	0.0%												1.00	0.89	0.65	0.56
3	ELEGANT TRAIN B	5/2	9-1	NO	0.0%												0.53	0.63	0.36	0.41
4	JESSA CORONA PEACH	6-1	5/2	NO	0.0%												0.69	0.84	0.07	0.46
5	ONE FAMOUS TIME	12-1	10-1	NO	0.0%												0.47	0.73	0.46	0.59
6	FAST N SIXY	15-1	5-1	NO	0.0%												0.84	0.90	0.60	0.83
7	SUSPICIOUS EYES	4-1	20-1	NO	0.0%												0.68	0.87	0.58	0.45
8	APOLLITICAL KING	6-1	10-1	NO	0.0%												0.70	0.94	0.50	0.57
9	CR CHEETAH FEIN	12-1	17-1	NO	0.0%												0.69	0.84	0.52	0.62
10	UNCLE TRAVVY	15-1	166-1	NO	0.0%												0.76	1.00	0.41	0.72

No.	CZone %	E (CZ%)	EP (CZ%)	P (CZ%)	PC (CZ%)	C (CZ%)	ANY (CZ%)	N/A (CZ%)	1st
1	0.0%							1 (0.0%)	
2	0.0%							2 (0.0%)	
3	0.0%							3 (0.0%)	
4	0.0%							4 (0.0%)	
5	0.0%							5 (0.0%)	
6	0.0%							6 (0.0%)	
								7 (0.0%)	
								8 (0.0%)	
								9 (0.0%)	
								10 (0.0%)	



# SMART SHEETS

[Back to Race Summary](#)

## Data Guide & Structural Interpretation Framework

### DATA FOUNDATION

---

All Smart Sheets metrics are derived from up to the horse's 10 most recent races, where applicable. Calculations are structured to emphasize recent form, reflect demonstrated performance patterns, and reduce distortion from outdated efforts.

More recent races carry greater interpretive weight within projections and structural evaluations. This ensures current condition and form cycles are prioritized over distant historical performance.

### PERFORMANCE STANDARD

---

#### PAR (Race Standard)

PAR indicates whether a horse has previously run a speed figure equal to or greater than today's race standard.

Designations include:

**'YES'** – Has met or exceeded today's PAR

**'MAYBE'** -1 to -5 – Finished within 1 to 5 speed points of today's PAR

**'NO'** – Has not approached today's PAR level

The MAYBE designation identifies horses that have demonstrated competitive proximity without fully qualifying.

#### PAR+

PAR+ represents the percentage of simulations in which the horse meets or exceeds today's PAR standard. Higher percentages indicate more frequent projected competitiveness at today's performance level. PAR+ reflects projected probability rather than past qualification alone.

#### Performance Context

Approximately 5 Speed or Pace points equate to 1 length. This conversion provides scale when interpreting speed separation, PAR proximity, pace advantage, and structural positioning. Small numeric gaps may represent marginal positional differences, while larger separations may reflect more meaningful competitive distance.

## SPEED & VALUE STRUCTURE

---

### Speed # Edge (Minimum Threshold: 3 Points)

Speed # Edge highlights meaningful separation between projected top speed figures. An edge is recognized only when a horse holds a minimum 3-point advantage over the next highest projected figure.

Using the structural scale:

3 points ≈ slightly more than half a length

5 points ≈ approximately 1 length

This threshold filters out normal figure variance and isolates measurable separation.

### SIM Odds

SIM Odds represent fair-value odds derived from simulation probability. They reflect the model's internal estimate of each horse's likelihood of winning relative to the field.

When compared to Morning Line or live wagering odds, differences between projected probability and market pricing may help identify potential mispricing or value discrepancies.

Smart Sheets does not make wagering recommendations. SIM Odds provide a structured framework for evaluating probability versus price.

### SIM Speed #

SIM Speed is a projected performance figure generated from race simulations. It estimates how fast the horse is expected to run today under modeled pace and race-flow conditions. The number is most useful when evaluated relative to the field rather than in isolation.

### Speed Chart

The Speed Chart visually displays each horse's recent speed range:

'**Top**' of line – Maximum figure

'**Bottom**' of line – Minimum figure

'**Red Dot**' – Average figure

This allows evaluation of ceiling, floor, consistency, and volatility.

## PACE PROJECTIONS

---

### 1st Call Leader Projection

This metric estimates the likelihood a horse will be on the lead at the first call. It helps define projected early race structure and potential pace pressure.

### Early & Late Pace

These columns reflect performance strength in the front half and finishing phase of the race. Evaluating these collectively helps visualize projected race flow and potential positional advantages.

### Total Pace

Total Pace represents combined early and late performance strength. Separation within this column may indicate in-race structural advantage when evaluated relative to the field.

## POSITIONAL PROFILE

---

### C-Zone (Comfort Zone)

C-Zone measures how closely today's projected race conditions align with the pace environment under which the horse produced its best competitive finish. It evaluates race fit rather than raw speed. Higher percentages indicate stronger alignment between projected structure and demonstrated success conditions.

### Pace View

Pace View categorizes horses based on positional tendencies during competitive finishes.

'E' – Front-runner

'EP' – Lead or press

'P' – Tactical stalker

'PC' – Versatile stalker/closer

'C' – Closer

'ANY' – Demonstrated multiple effective styles

'N/A' – No competitive finish within 5 lengths

'1st' – First-time starter

The percentage displayed next to each horse represents its C-Zone score, combining positional tendency with projected structural fit.

## DEVELOPMENT & MOVEMENT SIGNALS

---

### **Class Move**

Indicates whether a horse is moving up in class, moving down in class, or remaining at a similar level. Class shifts may influence competitive positioning within today's race structure.

### **First-Time Starter Rank**

Ranks debut runners using internal evaluation metrics for comparison within the field. The maximum First-Time Starter score is 3, representing the strongest relative rating among debut runners in the race.

### **Workout Indicators**

Bullet / Bullet & Go indicators reflect strong recent workouts relative to the field and may signal preparation sharpness.

### **2nd Race Parability**

Applies to lightly raced horses making their second start. Indicates whether projected development meets or exceeds today's PAR standard.

This metric may carry increased relevance when few or no horses have previously met today's PAR threshold.

## CONNECTION STRENGTH

---

Jockey and Trainer ratings are scaled within the field and color-coded to reflect relative strength.

## COLOR FORMATTING & STRUCTURAL EDGE IDENTIFICATION

---

Smart Sheets uses color formatting and structured layout to visually identify potential structural advantages, including meaningful speed separation, PAR qualification or proximity, projected pace leadership, connection strength, and simulation pricing disparities.

Interpretation of how these elements interact remains the responsibility of the user.

## DISCLAIMER

---

Smart Sheets data is compiled using information derived from reputable industry sources and publicly available racing data. All data is used in good faith and presented for informational and educational purposes. While every effort is made to ensure accuracy and completeness, errors, omissions, or data inconsistencies may occur and are unintended.

Smart Sheets is a decision-support tool and does not guarantee outcomes.

## RESPONSIBLE WAGERING NOTICE

---

Horse racing wagering involves financial risk. Users should never wager more than they can afford to lose. If you cannot afford to lose anything, you should not gamble.

If you believe you may have a gambling problem, seek assistance immediately through a licensed professional or recognized responsible gaming organization.

All wagering decisions are solely the responsibility of the user.