



See the Edge in Every Race
REMINGTON PARK 05/30/2026

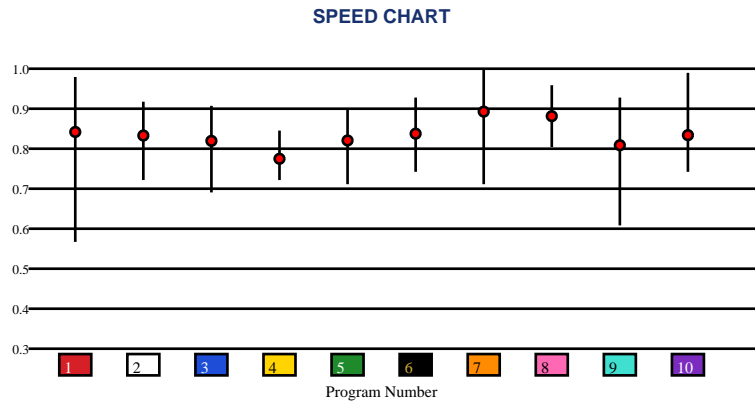
How to Use Smart Sheets → <https://horseracingtoday.net/wp-content/uploads/2026/03/HRTSmartSheetsExplanations.pdf>

Race	Distance	Surface	Race Type	Purse
Race 1	350 Yards	Dirt	Stk 20k	\$20,000
Race 2	350 Yards	Dirt	Trial	\$224,600
Race 3	3.95 Furlongs	Dirt	Stk 50k	\$50,000
Race 4	350 Yards	Dirt	Stk 50k	\$50,000
Race 5	350 Yards	Dirt	Stk 75k	\$75,000
Race 6	350 Yards	Dirt	Stk 75k	\$75,000
Race 7	400 Yards	Dirt	Stk 75k	\$75,000
Race 8	400 Yards	Dirt	Stk 100k	\$100,000
Race 9	400 Yards	Dirt	Stk 374k	\$373,800
Race 10	400 Yards	Dirt	Stk 335800	\$335,800
Race 11	2 Furlongs	Dirt	Stk 250k	\$250,000
Race 12	350 Yards	Dirt	Trial	\$1,158,940
Appendix	Smart Sheets Reference Guide			

Speed # Edge (>=3)	SIM Odds	SIM Speed #	1st Call Leader	Early Pace	Late Pace	Total Pace
1	7/5	1 91.9	2 11.4%	1	1	1
8	7/2	8 91.0	8 10.6%	8	8	8
7	4-1	7 88.5	7 10.4%	7	7	7
2	15-1	2 84.3	10 10.3%	9	9	9
6	29-1	6 81.2	5 9.9%	2	2	2
3	39-1	3 80.8	9 9.8%	10	10	10

Pace / Improvement / Times																				
No.	Horse	ML Odds	SIM Odds	PAR	PAR+	Early	Mid	Late	1/4	1/2	Class Move	Move by Lengths	1st Timer (3 Max)	Bullet & Go	Back Bullet	2nd Race Parability	Jockey Win	Jockey ITM	Trainer Win	Trainer ITM
1	SET ON CRUISE	9/2	7/5	NO	0.0%												0.71	0.70	0.86	0.88
2	GIGIS GUCCI GLASSES	12-1	15-1	NO	0.0%												0.74	0.71	0.86	0.88
3	MIA CHILITOS	8-1	39-1	NO	0.0%												0.54	0.50	0.86	0.88
4	INNER G	15-1	999-1	NO	0.0%												0.56	0.66	0.43	0.65
5	CANCEL CULTURE	10-1	332-1	NO	0.0%												0.62	0.58	1.00	1.00
6	LIVEWIRES APOLLO	8-1	29-1	NO	0.0%												0.81	0.76	0.86	0.88
7	TURBULENT	3-1	4-1	NO	0.0%												0.90	1.00	1.00	1.00
8	CUZ EYEMA COWBOY BABY	4-1	7/2	NO	0.0%												0.97	0.82	0.32	0.66
9	UPSHOT	6-1	42-1	NO	0.0%												0.56	0.56	0.64	0.48
10	PRETTY LIL POISON	15-1	332-1	NO	0.0%												1.00	0.90	0.86	0.88

No.	CZone %	E (CZ%)	EP (CZ%)	P (CZ%)	PC (CZ%)	C (CZ%)	ANY (CZ%)	N/A (CZ%)	1st
1	0.0%							1 (0.0%)	
2	0.0%							2 (0.0%)	
3	0.0%							3 (0.0%)	
4	0.0%							4 (0.0%)	
5	0.0%							5 (0.0%)	
6	0.0%							6 (0.0%)	
								7 (0.0%)	
								8 (0.0%)	
								9 (0.0%)	
								10 (0.0%)	



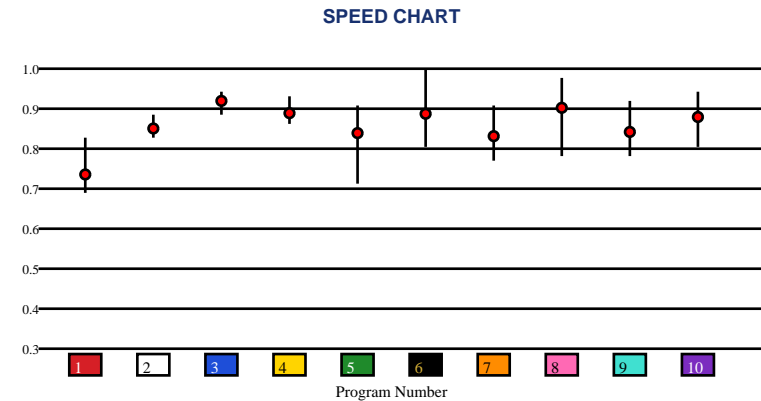


REMINGTON PARK | 05/30/2026 | Race 2 | 350 Yards | Dirt | Trial | Purse: \$224,600

Speed # Edge (>=3)	SIM Odds		SIM Speed #		1st Call Leader		Early Pace		Late Pace		Total Pace	
8	6/5	8	82.3	10	11.4%	8	8	8	8	8	8	
6	5-1	3	80.0	7	10.8%	6	6	6	6	6	6	
3	8-1	4	77.3	8	10.2%	3	3	3	3	3	3	
5	9-1	6	76.3	3	10.1%	5	5	5	5	5	5	
10	14-1	10	76.0	1	10.0%	10	10	10	10	10	10	
9	23-1	9	75.4	4	9.9%	4	4	4	4	4	4	

Pace / Improvement / Times																				
No.	Horse	ML Odds	SIM Odds	PAR	PAR+	Early	Mid	Late	1/4	1/2	Class Move	Move by Lengths	1st Timer (3 Max)	Bullet & Go	Back Bullet	2nd Race Parability	Jockey Win	Jockey ITM	Trainer Win	Trainer ITM
1	DALLAS NORTH TOLLWAY	15-1	1001-1	NO	0.0%												0.55	0.66	0.54	0.63
2	ZAZAS COCONUT CARTEL	10-1	249-1	NO	0.0%												0.50	0.62	0.66	0.82
3	DW SHOWIN D OFF	9/2	8-1	NO	0.0%												0.65	0.71	0.63	0.72
4	CHILINATOR	6-1	26-1	NO	0.0%												0.68	0.79	0.54	0.63
5	LIMITED JESSE	7/2	9-1	NO	0.0%												0.51	0.69	1.00	1.00
6	BIG ROTNEY	5/2	5-1	NO	0.0%												0.48	0.61	0.54	0.63
7	IMA HOT MESS	20-1	90-1	NO	0.0%												0.36	0.44	0.54	0.63
8	DULCE DINERO	8-1	6/5	NO	0.0%												0.61	0.87	0.20	0.47
9	BELLA BC	15-1	23-1	NO	0.0%												0.42	0.78	0.62	0.89
10	MW BCAUSE IM ALIVE	12-1	14-1	NO	0.0%												1.00	1.00	1.00	1.00

No.	CZone %	E (CZ%)	EP (CZ%)	P (CZ%)	PC (CZ%)	C (CZ%)	ANY (CZ%)	N/A (CZ%)	1st
1	0.0%							1 (0.0%)	
2	0.0%							2 (0.0%)	
3	0.0%							3 (0.0%)	
4	0.0%							4 (0.0%)	
5	0.0%							5 (0.0%)	
6	0.0%							6 (0.0%)	
								7 (0.0%)	
								8 (0.0%)	
								9 (0.0%)	
								10 (0.0%)	



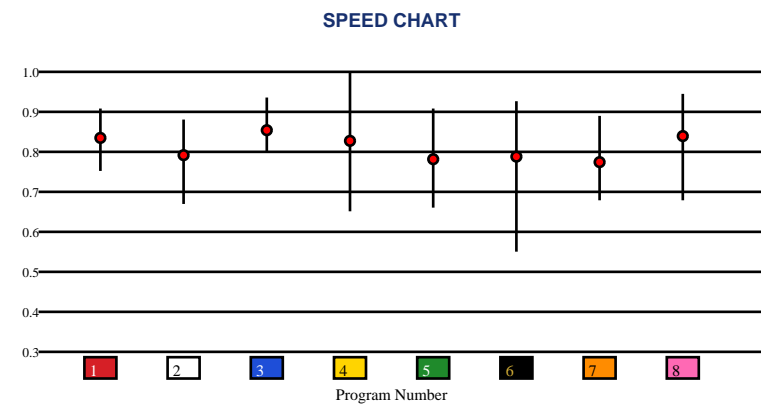


REMINGTON PARK | 05/30/2026 | Race 3 | 3.95 Furlongs | Dirt | Stk 50k | Purse: \$50,000

Speed # Edge (>=3)	SIM Odds		SIM Speed #		1st Call Leader		Early Pace		Late Pace		Total Pace	
	6	1-1	6	94.7	5	13.6%	6		6		6	
	7	6-1	3	89.7	4	13.6%	3		3		3	
	3	8-1	7	86.7	8	13.5%	5		5		5	
	5	11-1	1	86.6	2	12.7%	7		7		7	
	1	12-1	5	84.0	7	12.0%	1		1		1	
	8	21-1	8	81.1	1	12.0%	8		8		8	

Pace / Improvement / Times																				
No.	Horse	ML Odds	SIM Odds	PAR	PAR+	Early	Mid	Late	1/4	1/2	Class Move	Move by Lengths	1st Timer (3 Max)	Bullet & Go	Back Bullet	2nd Race Parability	Jockey Win	Jockey ITM	Trainer Win	Trainer ITM
1	WYNNCHESTER	4-1	12-1	NO	0.0%												0.90	1.00	1.00	0.91
2	ROCK YA LATER	6-1	332-1	NO	0.0%												0.74	0.71	0.26	0.90
3	HANDIN OUT CANDY	9/5	8-1	NO	0.0%												0.76	0.79	0.74	0.87
4	FL RIZZO	12-1	21-1	NO	0.0%												0.71	0.70	0.85	0.88
5	INTO THE LITE	9/2	11-1	NO	0.0%												1.00	0.90	0.82	0.98
6	CASH BACK HERO	10-1	1-1	NO	0.0%												0.87	0.69	0.81	0.71
7	MISTER LIGHTS OUT	15-1	6-1	NO	0.0%												0.76	0.78	0.42	0.73
8	O DONOVAN ROSSA	5-1	21-1	NO	0.0%												0.97	0.82	0.99	1.00

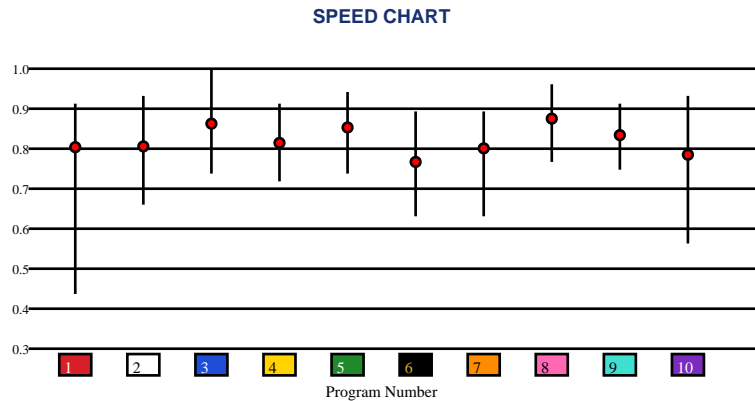
No.	CZone %	E (CZ%)	EP (CZ%)	P (CZ%)	PC (CZ%)	C (CZ%)	ANY (CZ%)	N/A (CZ%)	1st
4	55.4%		3 (55.4%)	1 (0.0%)			4 (55.4%)		
3	55.4%		5 (55.4%)	2 (0.0%)			7 (43.4%)		
6	55.4%		6 (55.4%)						
5	55.4%		8 (39.4%)						
7	43.4%								
8	39.4%								



Speed # Edge (>=3)	SIM Odds		SIM Speed #		1st Call Leader		Early Pace		Late Pace		Total Pace	
1	9/5	5	91.1	7	10.6%	1	1	1	1	1	1	
5	9/2	9	90.6	1	10.6%	9	9	9	9	9	9	
9	7-1	1	90.2	6	10.5%	5	5	5	5	5	5	
2	9-1	8	87.2	3	10.3%	8	8	8	8	8	8	
8	15-1	2	86.0	2	10.1%	3	3	3	3	3	3	
3	16-1	6	85.7	4	9.9%	2	2	2	2	2	2	

Pace / Improvement / Times																				
No.	Horse	ML Odds	SIM Odds	PAR	PAR+	Early	Mid	Late	1/4	1/2	Class Move	Move by Lengths	1st Timer (3 Max)	Bullet & Go	Back Bullet	2nd Race Parability	Jockey Win	Jockey ITM	Trainer Win	Trainer ITM
1	UNCLE REDHEADS	7/2	9/5	NO	0.0%												0.46	0.63	0.48	0.62
2	ILLEGAL COWGIRL 123	9/2	9-1	NO	0.0%												0.33	0.58	0.48	0.62
3	KVN DESIGN	20-1	16-1	NO	0.0%												0.47	0.62	0.57	0.79
4	BP HAIL MARY	15-1	110-1	NO	0.0%												0.38	0.65	0.63	0.72
5	B AJ	6-1	9/2	NO	0.0%												1.00	1.00	1.00	1.00
6	SOUTHERN FURRTREEOUS	15-1	18-1	NO	0.0%												0.30	0.68	0.62	0.89
7	SHEZA GOLDIGGER	10-1	1001-1	NO	0.0%												0.78	0.80	0.23	0.58
8	JAMIES SIN TACHA	8-1	15-1	NO	0.0%												0.72	0.87	1.00	1.00
9	CORONADOS 123	3-1	7-1	NO	0.0%												0.44	0.76	0.53	0.85
10	IMA BIGG FLASH	8-1	27-1	NO	0.0%												0.11	0.48	0.68	0.86

No.	CZone %	E (CZ%)	EP (CZ%)	P (CZ%)	PC (CZ%)	C (CZ%)	ANY (CZ%)	N/A (CZ%)	1st
1	0.0%							1 (0.0%)	
2	0.0%							2 (0.0%)	
3	0.0%							3 (0.0%)	
4	0.0%							4 (0.0%)	
5	0.0%							5 (0.0%)	
6	0.0%							6 (0.0%)	
								7 (0.0%)	
								8 (0.0%)	
								9 (0.0%)	
								10 (0.0%)	



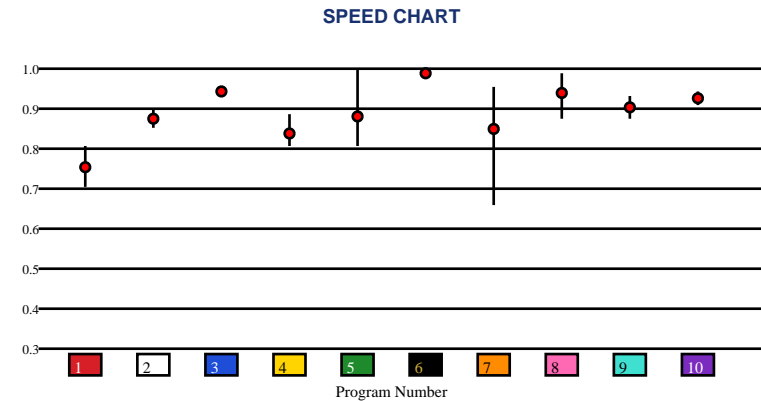


REMINGTON PARK | 05/30/2026 | Race 5 | 350 Yards | Dirt | Stk 75k | Purse: \$75,000

Speed # Edge (>=3)		SIM Odds		SIM Speed #		1st Call Leader		Early Pace		Late Pace		Total Pace	
6	3	3	5/2	3	83.0	7	11.1%	3		3		3	
		5	3-1	8	82.7	2	10.4%	5		5		5	
		8	3-1	10	81.5	6	10.3%	8		8		8	
		7	8-1	5	79.9	4	10.2%	10		10		10	
		10	14-1	9	79.4	1	10.2%	6		6		6	
		9	28-1	2	76.9	8	9.8%	7		7		7	

Pace / Improvement / Times																				
No.	Horse	ML Odds	SIM Odds	PAR	PAR+	Early	Mid	Late	1/4	1/2	Class Move	Move by Lengths	1st Timer (3 Max)	Bullet & Go	Back Bullet	2nd Race Parability	Jockey Win	Jockey ITM	Trainer Win	Trainer ITM
1	PYC SIVAKO	15-1	1001-1	NO	0.0%												0.62	0.86	0.27	0.55
2	FLYING FIRE	6-1	999-1	NO	0.0%												0.42	0.73	0.58	0.72
3	SHE MAKES IT SPECIAL	7/2	5/2	NO	0.0%												0.56	0.96	0.77	0.76
4	LOOKEE HERE DADDY	12-1	1001-1	NO	0.0%												0.50	0.72	0.27	0.55
5	TELLEM IM IN THE 918	10-1	3-1	NO	0.0%												0.60	0.78	0.76	0.84
6	RUBY BLUE	6-1	166-1	NO	0.0%												0.46	0.67	1.00	0.67
7	MY FLYING EAGLE	8-1	8-1	NO	0.0%												1.00	1.00	0.27	0.55
8	AUNTIE D	10-1	3-1	NO	0.0%												0.23	0.61	0.32	0.61
9	SHES QUALIFIED	5-1	28-1	NO	0.0%												0.14	0.60	0.82	1.00
10	RELENTLESS RUTH	9/2	14-1	NO	0.0%												0.44	0.67	0.55	0.86

No.	CZone %	E (CZ%)	EP (CZ%)	P (CZ%)	PC (CZ%)	C (CZ%)	ANY (CZ%)	N/A (CZ%)	1st
1	0.0%							1 (0.0%)	
2	0.0%							2 (0.0%)	
3	0.0%							3 (0.0%)	
4	0.0%							4 (0.0%)	
5	0.0%							5 (0.0%)	
6	0.0%							6 (0.0%)	
								7 (0.0%)	
								8 (0.0%)	
								9 (0.0%)	
								10 (0.0%)	



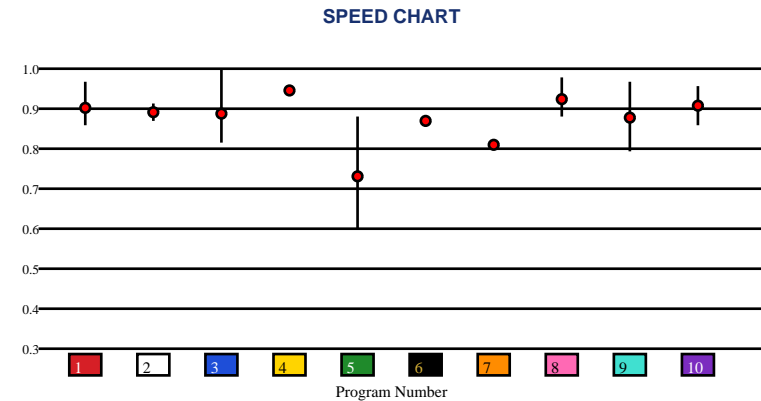


REMINGTON PARK | 05/30/2026 | Race 6 | 350 Yards | Dirt | Stk 75k | Purse: \$75,000

Speed # Edge (>=3)	SIM Odds		SIM Speed #		1st Call Leader		Early Pace		Late Pace		Total Pace	
9	3-1	4	87.0	4	11.6%	9		9		9		
3	9/2	8	85.0	3	10.8%	4		4		4		
8	5-1	1	83.8	7	10.2%	3		3		3		
4	6-1	10	83.7	9	10.1%	10		10		10		
10	6-1	9	83.6	5	10.1%	6		6		6		
1	10-1	2	82.1	8	9.6%	8		8		8		

Pace / Improvement / Times																				
No.	Horse	ML Odds	SIM Odds	PAR	PAR+	Early	Mid	Late	1/4	1/2	Class Move	Move by Lengths	1st Timer (3 Max)	Bullet & Go	Back Bullet	2nd Race Parability	Jockey Win	Jockey ITM	Trainer Win	Trainer ITM
1	D MOLISH	10-1	10-1	NO	0.0%												0.50	0.66	0.19	0.53
2	BE ICONIC	12-1	1001-1	NO	0.0%												0.14	0.55	0.68	0.86
3	RGS DEBUTANT	5-1	9/2	NO	0.0%												0.47	0.69	0.82	0.94
4	PYC DOLLARS COWBOY	5/2	6-1	NO	0.0%												0.56	0.74	0.27	0.35
5	KISS MY TAIL	15-1	42-1	NO	0.0%												1.00	0.92	0.53	0.65
6	JT MIDLIFE CRISIS	10-1	1001-1	NO	0.0%												0.60	0.71	0.56	0.71
7	MW BCAUSE IM ON FIRE	6-1	1001-1	NO	0.0%												0.92	1.00	1.00	1.00
8	WHISKEY DOC	15-1	5-1	NO	0.0%												0.44	0.61	0.46	0.74
9	DOS GRANDIOSE	10-1	3-1	NO	0.0%												0.56	0.87	0.63	0.72
10	APOLLITIKAL DREAMER	7/2	6-1	NO	0.0%												0.42	0.67	0.48	0.62

No.	CZone %	E (CZ%)	EP (CZ%)	P (CZ%)	PC (CZ%)	C (CZ%)	ANY (CZ%)	N/A (CZ%)	1st
1	0.0%							1 (0.0%)	
2	0.0%							2 (0.0%)	
3	0.0%							3 (0.0%)	
4	0.0%							4 (0.0%)	
5	0.0%							5 (0.0%)	
6	0.0%							6 (0.0%)	
								7 (0.0%)	
								8 (0.0%)	
								9 (0.0%)	
								10 (0.0%)	



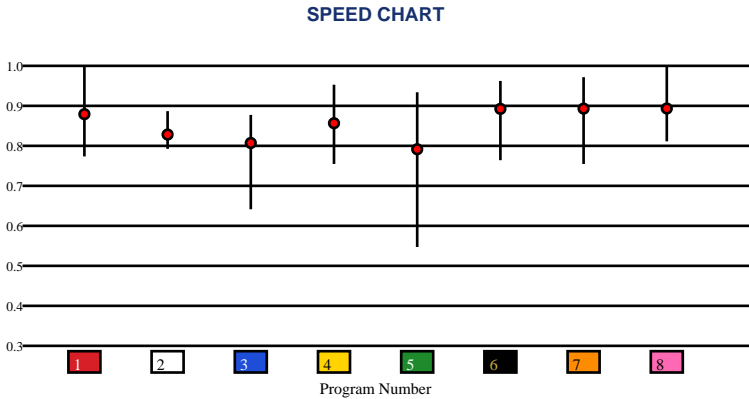


REMINGTON PARK | 05/30/2026 | Race 7 | 400 Yards | Dirt | Stk 75k | Purse: \$75,000

Speed # Edge (>=3)	SIM Odds		SIM Speed #		1st Call Leader		Early Pace		Late Pace		Total Pace	
	5	7/2	6	94.9	1	13.7%	8		8		8	
	1	4-1	8	93.3	5	13.3%	7		7		7	
	6	5-1	1	92.3	3	12.4%	5		5		5	
	8	5-1	7	91.3	6	12.4%	6		6		6	
	7	6-1	5	90.3	4	12.4%	1		1		1	
	3	15-1	3	87.9	8	12.1%	3		3		3	

Pace / Improvement / Times																				
No.	Horse	ML Odds	SIM Odds	PAR	PAR+	Early	Mid	Late	1/4	1/2	Class Move	Move by Lengths	1st Timer (3 Max)	Bullet & Go	Back Bullet	2nd Race Parability	Jockey Win	Jockey ITM	Trainer Win	Trainer ITM
1	LUCKY LUKE	10-1	4-1	NO	0.0%												0.42	0.73	0.77	0.99
2	CLAREETS BOY	12-1	332-1	NO	0.0%												0.47	0.74	0.77	0.76
3	LIGHTNIN STRIKES	6-1	15-1	NO	0.0%												0.60	0.78	0.93	0.84
4	APOLITICAL TIME	12-1	76-1	NO	0.0%												0.20	0.47	0.51	0.58
5	DASH FOR POWER	15-1	7/2	NO	0.0%												0.44	0.67	0.81	0.81
6	CURLS MAGIC WAGON	3-1	5-1	NO	0.0%												0.14	0.60	1.00	1.00
7	HARD TO POLITIC	7/5	6-1	NO	0.0%												1.00	1.00	0.77	0.76
8	JS ON FIRE	5-1	5-1	NO	0.0%												0.50	0.72	0.94	0.76

No.	CZone %	E (CZ%)	EP (CZ%)	P (CZ%)	PC (CZ%)	C (CZ%)	ANY (CZ%)	N/A (CZ%)	1st
1	0.0%							1 (0.0%)	
2	0.0%							2 (0.0%)	
3	0.0%							3 (0.0%)	
4	0.0%							4 (0.0%)	
5	0.0%							5 (0.0%)	
6	0.0%							6 (0.0%)	
								7 (0.0%)	
								8 (0.0%)	



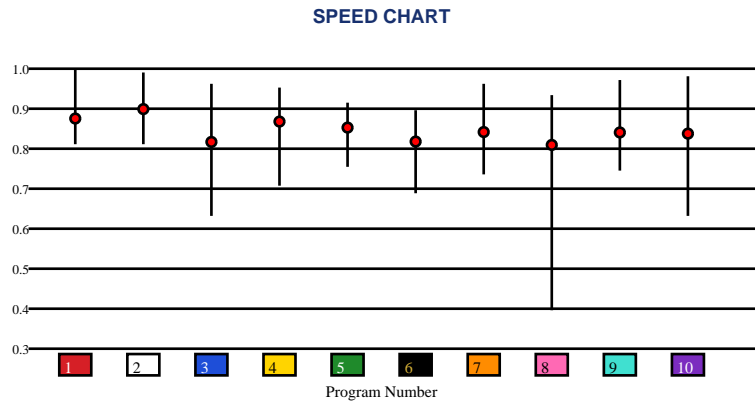


REMINGTON PARK | 05/30/2026 | Race 8 | 400 Yards | Dirt | Stk 100k | Purse: \$100,000

Speed # Edge (>=3)	SIM Odds		SIM Speed #		1st Call Leader		Early Pace		Late Pace		Total Pace	
8	5/2	2	92.6	4	10.9%	8	8	8	8	8	8	
9	4-1	9	90.6	3	10.6%	2	2	2	2	2	2	
2	5-1	1	89.3	6	10.4%	9	9	9	9	9	9	
4	6-1	5	88.4	1	10.4%	4	4	4	4	4	4	
1	10-1	4	88.3	10	10.3%	1	1	1	1	1	1	
6	25-1	6	85.7	9	10.2%	6	6	6	6	6	6	

Pace / Improvement / Times																				
No.	Horse	ML Odds	SIM Odds	PAR	PAR+	Early	Mid	Late	1/4	1/2	Class Move	Move by Lengths	1st Timer (3 Max)	Bullet & Go	Back Bullet	2nd Race Parability	Jockey Win	Jockey ITM	Trainer Win	Trainer ITM
1	I AM CANDY	15-1	10-1	NO	0.0%												0.28	0.49	0.23	0.48
2	SHEZA FEARLESS EAGLE	7/2	5-1	NO	0.0%												0.52	0.68	0.35	0.63
3	KARMAS A CHICK	15-1	66-1	NO	0.0%												0.51	0.69	0.21	0.52
4	KARMALITES	6-1	6-1	NO	0.0%												1.00	1.00	0.78	1.00
5	BABY RUTH	5-1	28-1	NO	0.0%												0.68	0.79	0.13	0.38
6	FLYING BANDIDA	5/2	25-1	NO	0.0%												0.46	0.67	0.38	0.62
7	EYESA WAGON MY TALE	8-1	142-1	NO	0.0%												0.55	0.66	0.42	0.55
8	JOLIE LAIDE	12-1	5/2	NO	0.0%												0.53	0.75	1.00	0.89
9	CATCHN SOUTHERN RAYS	8-1	4-1	NO	0.0%												0.38	0.58	0.41	0.70
10	PEPPA	20-1	58-1	NO	0.0%												0.36	0.44	0.78	1.00

No.	CZone %	E (CZ%)	EP (CZ%)	P (CZ%)	PC (CZ%)	C (CZ%)	ANY (CZ%)	N/A (CZ%)	1st
1	0.0%							1 (0.0%)	
2	0.0%							2 (0.0%)	
3	0.0%							3 (0.0%)	
4	0.0%							4 (0.0%)	
5	0.0%							5 (0.0%)	
6	0.0%							6 (0.0%)	
								7 (0.0%)	
								8 (0.0%)	
								9 (0.0%)	
								10 (0.0%)	



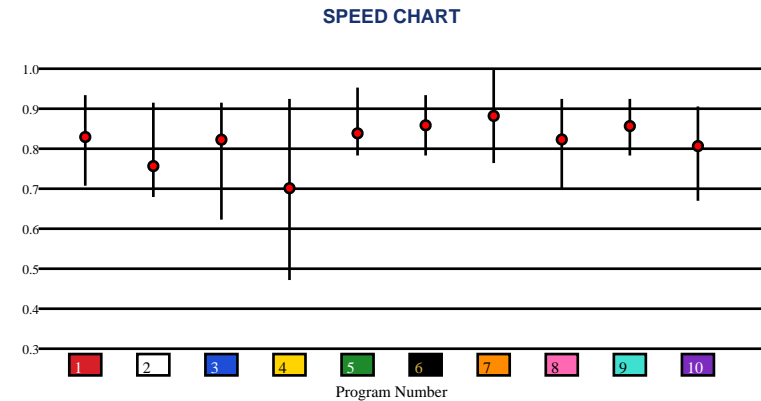


REMINGTON PARK | 05/30/2026 | Race 9 | 400 Yards | Dirt | Stk 374k | Purse: \$373,800

Speed # Edge (>=3)	SIM Odds		SIM Speed #		1st Call Leader		Early Pace		Late Pace		Total Pace	
7	8/5	7	100.4	10	10.8%	7		7		7		
8	9/2	1	95.6	6	10.6%	6		6		6		
3	6-1	6	94.8	2	10.5%	8		8		8		
1	7-1	8	94.5	7	10.4%	1		1		1		
4	13-1	3	93.7	9	10.4%	3		3		3		
6	18-1	9	91.4	3	10.0%	5		5		5		

Pace / Improvement / Times																				
No.	Horse	ML Odds	SIM Odds	PAR	PAR+	Early	Mid	Late	1/4	1/2	Class Move	Move by Lengths	1st Timer (3 Max)	Bullet & Go	Back Bullet	2nd Race Parability	Jockey Win	Jockey ITM	Trainer Win	Trainer ITM
1	EMERALD BAY	5-1	7-1	NO	0.0%												0.51	0.69	0.50	0.72
2	HONEY CREEK	10-1	82-1	NO	0.0%												0.15	0.55	0.53	0.86
3	CHEW BAC CAH	8-1	6-1	NO	0.0%												0.46	0.67	0.38	0.62
4	JESS WANT TO KNOW	15-1	13-1	NO	0.0%												0.16	0.35	0.17	0.18
5	WERA C	9/2	166-1	NO	0.0%												0.53	0.75	0.49	0.89
6	TOBY SIS	7/2	18-1	NO	0.0%												0.68	0.79	0.44	0.58
7	MAMMA IM LEAVING YOU	8-1	8/5	NO	0.0%												0.53	0.71	1.00	0.82
8	WHERE IS QUEEN B	6-1	9/2	NO	0.0%												1.00	1.00	0.78	1.00
9	SUNSHINING	12-1	37-1	NO	0.0%												0.65	0.71	0.14	0.52
10	FLYING POLICY 123	8-1	110-1	NO	0.0%												0.61	0.87	0.50	0.65

No.	CZone %	E (CZ%)	EP (CZ%)	P (CZ%)	PC (CZ%)	C (CZ%)	ANY (CZ%)	N/A (CZ%)	1st
1	0.0%							1 (0.0%)	
2	0.0%							2 (0.0%)	
3	0.0%							3 (0.0%)	
4	0.0%							4 (0.0%)	
5	0.0%							5 (0.0%)	
6	0.0%							6 (0.0%)	
								7 (0.0%)	
								8 (0.0%)	
								9 (0.0%)	
								10 (0.0%)	



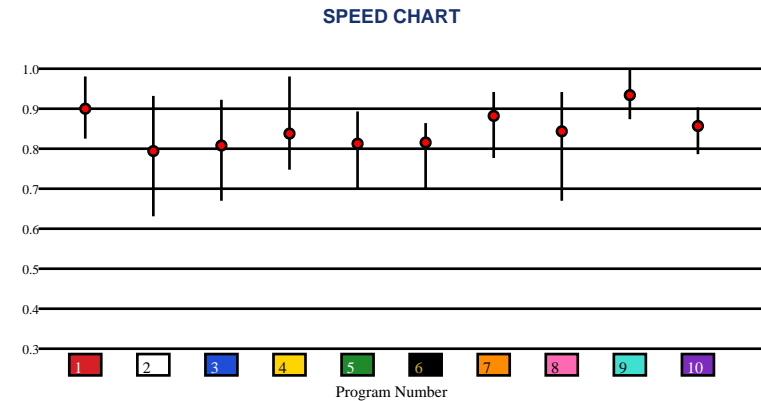


REMINGTON PARK | 05/30/2026 | Race 10 | 400 Yards | Dirt | Stk 335800 | Purse: \$335,800

Speed # Edge (>=3)		SIM Odds		SIM Speed #		1st Call Leader		Early Pace		Late Pace		Total Pace	
1	4	4	5-1	9	94.8	6	11.2%	9		9		9	
		8	5-1	7	91.3	9	10.7%	8		8		8	
		9	5-1	8	89.9	8	10.5%	4		4		4	
		3	6-1	1	89.9	1	10.3%	3		3		3	
		2	6-1	4	88.7	7	10.2%	2		2		2	
		7	8-1	10	88.4	5	9.8%	1		1		1	

Pace / Improvement / Times																				
No.	Horse	ML Odds	SIM Odds	PAR	PAR+	Early	Mid	Late	1/4	1/2	Class Move	Move by Lengths	1st Timer (3 Max)	Bullet & Go	Back Bullet	2nd Race Parability	Jockey Win	Jockey ITM	Trainer Win	Trainer ITM
1	LUZIANA MAN	3-1	16-1	NO	0.0%												0.55	0.66	1.00	0.82
2	ARGYLES	12-1	6-1	NO	0.0%												0.42	0.78	0.49	0.89
3	RACKET RIDGE	10-1	6-1	NO	0.0%												0.34	0.58	0.38	0.62
4	AJS WINGMAN	12-1	5-1	NO	0.0%												0.46	0.67	0.38	0.62
5	FIRE N SPEED	15-1	166-1	NO	0.0%												0.52	0.68	0.41	0.65
6	AB SEIS CORONAS	15-1	99-1	NO	0.0%												0.53	0.75	0.50	0.65
7	MAVERYKK	20-1	8-1	NO	0.0%												0.68	0.79	0.50	0.65
8	CYBER BLUES	6-1	5-1	NO	0.0%												1.00	1.00	0.78	1.00
9	JC SPEEDING	5/2	5-1	NO	0.0%												0.51	0.69	0.50	0.72
10	POINT BLANK RANGE	5-1	49-1	NO	0.0%												0.65	0.71	0.50	0.72

No.	CZone %	E (CZ%)	EP (CZ%)	P (CZ%)	PC (CZ%)	C (CZ%)	ANY (CZ%)	N/A (CZ%)	1st
1	0.0%							1 (0.0%)	
2	0.0%							2 (0.0%)	
3	0.0%							3 (0.0%)	
4	0.0%							4 (0.0%)	
5	0.0%							5 (0.0%)	
6	0.0%							6 (0.0%)	
								7 (0.0%)	
								8 (0.0%)	
								9 (0.0%)	
								10 (0.0%)	



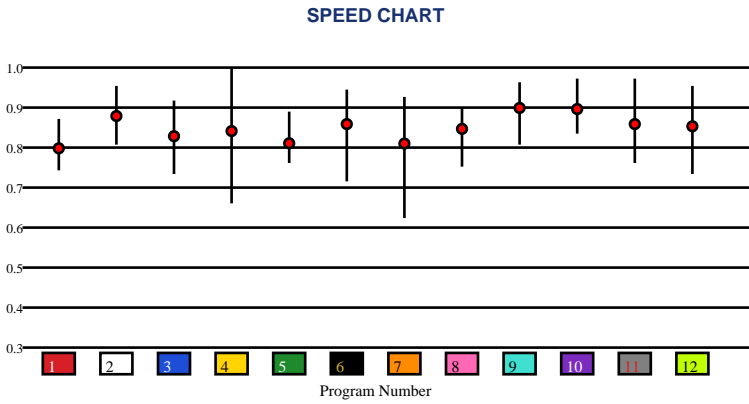


REMINGTON PARK | 05/30/2026 | Race 11 | 2 Furlongs | Dirt | Stk 250k | Purse: \$250,000

Speed # Edge (>=3)	SIM Odds		SIM Speed #		1st Call Leader		Early Pace		Late Pace		Total Pace	
6	5/2	6	97.3	7	9.6%	6	6	6	6	6	6	
7	5-1	9	96.8	3	8.4%	10	10	10	10	10	10	
4	6-1	10	96.6	11	8.4%	7	7	7	7	7	7	
10	10-1	2	95.1	5	8.4%	9	9	9	9	9	9	
9	10-1	11	94.1	1	8.4%	4	4	4	4	4	4	
2	11-1	8	92.1	9	8.3%	5	5	5	5	5	5	

Pace / Improvement / Times																				
No.	Horse	ML Odds	SIM Odds	PAR	PAR+	Early	Mid	Late	1/4	1/2	Class Move	Move by Lengths	1st Timer (3 Max)	Bullet & Go	Back Bullet	2nd Race Parability	Jockey Win	Jockey ITM	Trainer Win	Trainer ITM
1	ULTIMATE BATTLE	20-1	1001-1	NO	0.0%												0.34	0.58	0.70	0.69
2	SHAKERS NO SECRET	15-1	11-1	NO	0.0%												0.55	0.66	0.79	0.62
3	CHURCH SPIRE	8-1	24-1	NO	0.0%												0.42	0.78	0.91	1.00
4	BIGG PICTURE	10-1	6-1	NO	0.0%												1.00	1.00	0.72	0.72
5	STETSONN	15-1	1001-1	NO	0.0%												0.51	0.69	0.33	0.33
6	TOASTIN HEROS	5/2	5/2	NO	0.0%												0.25	0.55	0.39	0.59
7	COWBOYS GUN Z	20-1	5-1	NO	0.0%												0.68	0.79	0.94	0.74
8	LETHAL COWBOY 123	15-1	82-1	NO	0.0%												0.52	0.68	0.79	0.62
9	KJ DESPARADO	6-1	10-1	NO	0.0%												0.49	0.70	0.72	0.72
10	EMPRESSUM	7/2	10-1	NO	0.0%												0.49	0.70	0.65	0.71
11	HOOKED N GONE	10-1	18-1	NO	0.0%												0.53	0.75	0.66	0.92
12	HOLY PETE	20-1	30-1	NO	0.0%												0.15	0.55	1.00	0.96

No.	CZone %	E (CZ%)	EP (CZ%)	P (CZ%)	PC (CZ%)	C (CZ%)	ANY (CZ%)	N/A (CZ%)	1st
1	0.0%							1 (0.0%)	
2	0.0%							2 (0.0%)	
3	0.0%							3 (0.0%)	
4	0.0%							4 (0.0%)	
5	0.0%							5 (0.0%)	
6	0.0%							6 (0.0%)	
								7 (0.0%)	
								8 (0.0%)	
								9 (0.0%)	
								10 (0.0%)	
								11 (0.0%)	
								12 (0.0%)	



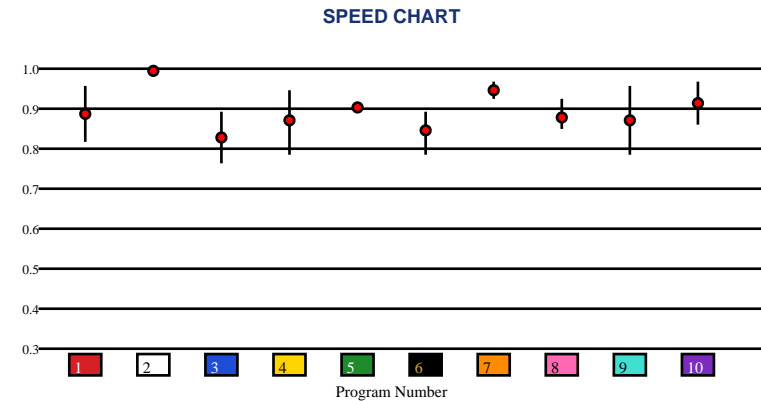


REMINGTON PARK | 05/30/2026 | Race 12 | 350 Yards | Dirt | Trial | Purse: \$1,158,940

Speed # Edge (>=3)	SIM Odds		SIM Speed #		1st Call Leader		Early Pace		Late Pace		Total Pace	
	2	1/2	2	92.5	2	10.5%	2		2		2	
	9	7-1	7	88.0	10	10.5%	10		10		10	
	10	8-1	10	85.0	9	10.4%	5		5		5	
	1	8-1	5	84.0	7	10.1%	1		1		1	
	4	41-1	1	82.5	3	10.0%	7		7		7	
	7	166-1	8	81.6	1	9.8%	8		8		8	

Pace / Improvement / Times																				
No.	Horse	ML Odds	SIM Odds	PAR	PAR+	Early	Mid	Late	1/4	1/2	Class Move	Move by Lengths	1st Timer (3 Max)	Bullet & Go	Back Bullet	2nd Race Parability	Jockey Win	Jockey ITM	Trainer Win	Trainer ITM
1	CENTRAFUGE	10-1	8-1	NO	0.0%												0.46	0.67	0.38	0.62
2	FALL CLASSIC	5/2	1/2	NO	0.0%												1.00	1.00	0.78	1.00
3	KISS MY NINE ELEVEN	20-1	1001-1	NO	0.0%												0.42	0.78	0.56	0.76
4	ONE FANCY COWBOY	8-1	41-1	NO	0.0%												0.55	0.66	1.00	0.82
5	BETT THE LIMIT	5-1	1001-1	NO	0.0%												0.52	0.55	0.78	1.00
6	LIGHT HER UP	15-1	1001-1	NO	0.0%												0.29	0.35	0.32	0.48
7	CURLS FAVORITE JET	4-1	166-1	NO	0.0%												0.15	0.55	0.53	0.86
8	IVORYS VERSION	15-1	1001-1	NO	0.0%												0.61	0.87	0.41	0.85
9	EL HURACANO V	15-1	7-1	NO	0.0%												0.68	0.79	0.44	0.58
10	DEMARUS	9/2	8-1	NO	0.0%												0.52	0.68	0.35	0.63

No.	CZone %	E (CZ%)	EP (CZ%)	P (CZ%)	PC (CZ%)	C (CZ%)	ANY (CZ%)	N/A (CZ%)	1st
1	0.0%							1 (0.0%)	
2	0.0%							2 (0.0%)	
3	0.0%							3 (0.0%)	
4	0.0%							4 (0.0%)	
5	0.0%							5 (0.0%)	
6	0.0%							6 (0.0%)	
								7 (0.0%)	
								8 (0.0%)	
								9 (0.0%)	
								10 (0.0%)	



SMART SHEETS

[Back to Race Summary](#)

Data Guide & Structural Interpretation Framework

DATA FOUNDATION

All Smart Sheets metrics are derived from up to the horse's 10 most recent races, where applicable. Calculations are structured to emphasize recent form, reflect demonstrated performance patterns, and reduce distortion from outdated efforts.

More recent races carry greater interpretive weight within projections and structural evaluations. This ensures current condition and form cycles are prioritized over distant historical performance.

PERFORMANCE STANDARD

PAR (Race Standard)

PAR indicates whether a horse has previously run a speed figure equal to or greater than today's race standard.

Designations include:

'YES' – Has met or exceeded today's PAR

'MAYBE' -1 to -5 – Finished within 1 to 5 speed points of today's PAR

'NO' – Has not approached today's PAR level

The MAYBE designation identifies horses that have demonstrated competitive proximity without fully qualifying.

PAR+

PAR+ represents the percentage of simulations in which the horse meets or exceeds today's PAR standard. Higher percentages indicate more frequent projected competitiveness at today's performance level. PAR+ reflects projected probability rather than past qualification alone.

Performance Context

Approximately 5 Speed or Pace points equate to 1 length. This conversion provides scale when interpreting speed separation, PAR proximity, pace advantage, and structural positioning. Small numeric gaps may represent marginal positional differences, while larger separations may reflect more meaningful competitive distance.

SPEED & VALUE STRUCTURE

Speed # Edge (Minimum Threshold: 3 Points)

Speed # Edge highlights meaningful separation between projected top speed figures. An edge is recognized only when a horse holds a minimum 3-point advantage over the next highest projected figure.

Using the structural scale:

3 points ≈ slightly more than half a length

5 points ≈ approximately 1 length

This threshold filters out normal figure variance and isolates measurable separation.

SIM Odds

SIM Odds represent fair-value odds derived from simulation probability. They reflect the model's internal estimate of each horse's likelihood of winning relative to the field.

When compared to Morning Line or live wagering odds, differences between projected probability and market pricing may help identify potential mispricing or value discrepancies.

Smart Sheets does not make wagering recommendations. SIM Odds provide a structured framework for evaluating probability versus price.

SIM Speed

SIM Speed is a projected performance figure generated from race simulations. It estimates how fast the horse is expected to run today under modeled pace and race-flow conditions. The number is most useful when evaluated relative to the field rather than in isolation.

Speed Chart

The Speed Chart visually displays each horse's recent speed range:

'**Top**' of line – Maximum figure

'**Bottom**' of line – Minimum figure

'**Red Dot**' – Average figure

This allows evaluation of ceiling, floor, consistency, and volatility.

PACE PROJECTIONS

1st Call Leader Projection

This metric estimates the likelihood a horse will be on the lead at the first call. It helps define projected early race structure and potential pace pressure.

Early & Late Pace

These columns reflect performance strength in the front half and finishing phase of the race. Evaluating these collectively helps visualize projected race flow and potential positional advantages.

Total Pace

Total Pace represents combined early and late performance strength. Separation within this column may indicate in-race structural advantage when evaluated relative to the field.

POSITIONAL PROFILE

C-Zone (Comfort Zone)

C-Zone measures how closely today's projected race conditions align with the pace environment under which the horse produced its best competitive finish. It evaluates race fit rather than raw speed. Higher percentages indicate stronger alignment between projected structure and demonstrated success conditions.

Pace View

Pace View categorizes horses based on positional tendencies during competitive finishes.

'E' – Front-runner

'EP' – Lead or press

'P' – Tactical stalker

'PC' – Versatile stalker/closer

'C' – Closer

'ANY' – Demonstrated multiple effective styles

'N/A' – No competitive finish within 5 lengths

'1st' – First-time starter

The percentage displayed next to each horse represents its C-Zone score, combining positional tendency with projected structural fit.

DEVELOPMENT & MOVEMENT SIGNALS

Class Move

Indicates whether a horse is moving up in class, moving down in class, or remaining at a similar level. Class shifts may influence competitive positioning within today's race structure.

First-Time Starter Rank

Ranks debut runners using internal evaluation metrics for comparison within the field. The maximum First-Time Starter score is 3, representing the strongest relative rating among debut runners in the race.

Workout Indicators

Bullet / Bullet & Go indicators reflect strong recent workouts relative to the field and may signal preparation sharpness.

2nd Race Parability

Applies to lightly raced horses making their second start. Indicates whether projected development meets or exceeds today's PAR standard.

This metric may carry increased relevance when few or no horses have previously met today's PAR threshold.

CONNECTION STRENGTH

Jockey and Trainer ratings are scaled within the field and color-coded to reflect relative strength.

COLOR FORMATTING & STRUCTURAL EDGE IDENTIFICATION

Smart Sheets uses color formatting and structured layout to visually identify potential structural advantages, including meaningful speed separation, PAR qualification or proximity, projected pace leadership, connection strength, and simulation pricing disparities.

Interpretation of how these elements interact remains the responsibility of the user.

DISCLAIMER

Smart Sheets data is compiled using information derived from reputable industry sources and publicly available racing data. All data is used in good faith and presented for informational and educational purposes. While every effort is made to ensure accuracy and completeness, errors, omissions, or data inconsistencies may occur and are unintended.

Smart Sheets is a decision-support tool and does not guarantee outcomes.

RESPONSIBLE WAGERING NOTICE

Horse racing wagering involves financial risk. Users should never wager more than they can afford to lose. If you cannot afford to lose anything, you should not gamble.

If you believe you may have a gambling problem, seek assistance immediately through a licensed professional or recognized responsible gaming organization.

All wagering decisions are solely the responsibility of the user.