



See the Edge in Every Race
ALBUQUERQUE 06/06/2026

How to Use Smart Sheets → <https://horseracingtoday.net/wp-content/uploads/2026/03/HRTSmartSheetsExplanations.pdf>

Race	Distance	Surface	Race Type	Purse
Race 1	350 Yards	Dirt	Maiden Special Weight	\$16,200
Race 2	3.95 Furlongs	Dirt	Allowance	\$27,000
Race 3	330 Yards	Dirt	Maiden Claiming	\$16,600
Race 4	350 Yards	Dirt	Claiming	\$15,800
Race 5	3.95 Furlongs	Dirt	Allowance	\$28,800
Race 6	350 Yards	Dirt	Allowance	\$30,500
Race 7	330 Yards	Dirt	Claiming	\$21,200
Race 8	400 Yards	Dirt	Allowance	\$32,300
Race 9	400 Yards	Dirt	Stk 100k	\$100,000
Race 10	400 Yards	Dirt	Stk 850000	\$850,000
Race 11	2 Furlongs	Dirt	Claiming	\$16,200
Appendix			Smart Sheets Reference Guide	

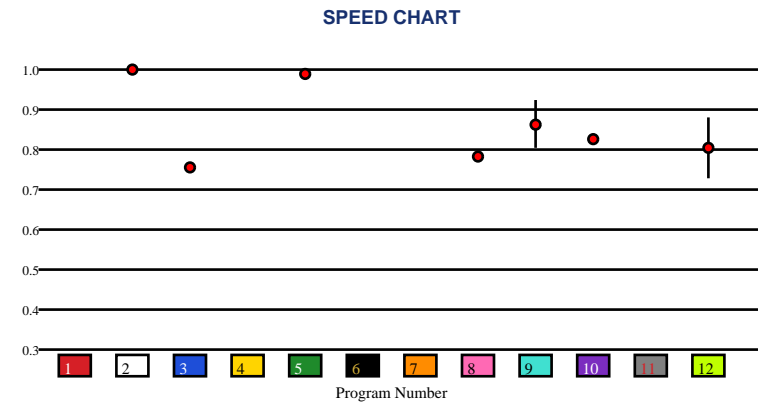


ALBUQUERQUE | 06/06/2026 | Race 1 | 350 Yards | Dirt | Maiden Special Weight | Purse: \$16,200

Speed # Edge (>=3)	SIM Odds		SIM Speed #		1st Call Leader		Early Pace		Late Pace		Total Pace	
9	5-1	9	79.5	10	9.4%	5		5		5		
8	9-1	5	79.4	9	9.3%	9		9		9		
5	9-1	10	79.3	11	8.8%	2		2		2		
4	10-1	11	79.3	4	8.6%	8		8		8		
2	11-1	7	79.3	8	8.5%	7		7		7		
11	11-1	2	79.3	6	8.4%	4		4		4		

Pace / Improvement / Times																				
No.	Horse	ML Odds	SIM Odds	PAR	PAR+	Early	Mid	Late	1/4	1/2	Class Move	Move by Lengths	1st Timer (3 Max)	Bullet & Go	Back Bullet	2nd Race Parability	Jockey Win	Jockey ITM	Trainer Win	Trainer ITM
1	HAWKSLASTDANCE	20-1	12-1	NO	0.0%								1.67				1.00	0.50	0.53	0.62
2	CALIENTE COWBOY 123	7/2	11-1	NO	0.0%												0.49	0.64	0.61	0.63
3	KISSIN LANE LO	9/2	1001-1	NO	0.0%												0.49	0.64	0.61	0.63
4	MGD DYINTOGETYA	20-1	10-1	NO	0.0%								1.67				0.22	0.44	1.00	1.00
5	REVENANTLY	3-1	9-1	NO	0.0%												0.49	0.64	0.52	0.85
6	PATRICK JANE	8-1	13-1	NO	0.0%								0.67				0.36	0.64	0.61	0.63
7	HOOSIER	10-1	11-1	NO	0.0%								1.00				0.49	0.64	0.61	0.63
8	DASHIN CURRENT 509	15-1	9-1	NO	0.0%												0.49	0.64	0.61	0.63
9	FLYIN BYEM Z	6-1	5-1	NO	0.0%												0.50	1.00	0.38	0.56
10	BERRACA	15-1	11-1	NO	0.0%												0.49	0.64	0.61	0.63
11	I CAN BE SPECIAL (AE)	30-1	11-1	NO	0.0%								1.00				0.49	0.64	0.61	0.12
12	LUCKY COWGIRL (AE)	30-1	13-1	NO	0.0%												0.36	0.64	0.61	0.63

No.	CZone %	E (CZ%)	EP (CZ%)	P (CZ%)	PC (CZ%)	C (CZ%)	ANY (CZ%)	N/A (CZ%)	1st
1	0.0%							2 (0.0%)	1
2	0.0%							3 (0.0%)	4
3	0.0%							5 (0.0%)	6
4	0.0%							8 (0.0%)	7
5	0.0%							9 (0.0%)	11
6	0.0%							10 (0.0%)	
								12 (0.0%)	



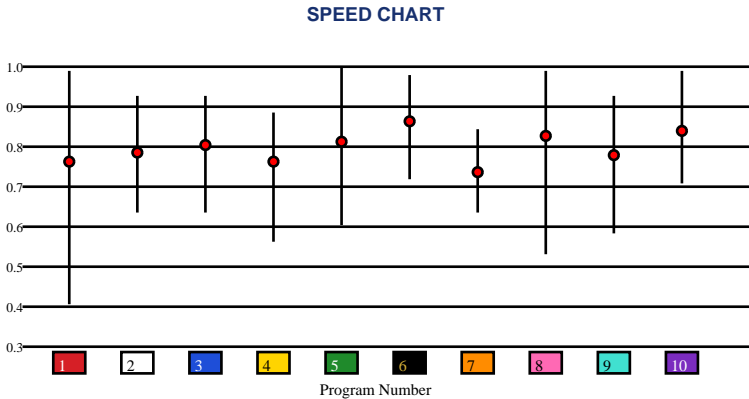


ALBUQUERQUE | 06/06/2026 | Race 2 | 3.95 Furlongs | Dirt | Allowance | Purse: \$27,000

Speed # Edge (>=3)		SIM Odds		SIM Speed #		1st Call Leader		Early Pace		Late Pace		Total Pace	
8	12	1	9/5	1	82.8	7	10.7%	1		1		1	
		5	5-1	5	82.8	4	10.6%	5		5		5	
		10	6-1	10	82.6	2	10.6%	8		8		8	
		8	6-1	9	81.1	3	10.2%	10		10		10	
		9	8-1	8	77.4	10	10.2%	9		9		9	
		6	47-1	6	76.4	8	10.1%	4		4		4	

Pace / Improvement / Times																				
No.	Horse	ML Odds	SIM Odds	PAR	PAR+	Early	Mid	Late	1/4	1/2	Class Move	Move by Lengths	1st Timer (3 Max)	Bullet & Go	Back Bullet	2nd Race Parability	Jockey Win	Jockey ITM	Trainer Win	Trainer ITM
1	AA SWEET REGAL	15-1	9/5	NO	0.0%												0.23	0.74	0.18	0.18
2	TORITO C	8-1	90-1	NO	0.0%												1.00	0.93	0.25	0.25
3	GO DESI GO	9/2	52-1	NO	0.0%												0.06	0.60	0.55	0.49
4	HEZADASHINVIKE	6-1	249-1	NO	0.0%												0.42	0.78	0.55	0.49
5	SPECIAL WHO	3-1	5-1	NO	0.0%												0.38	1.00	0.77	0.83
6	PEVS RUNNIN BEAR	20-1	47-1	NO	0.0%												0.27	0.91	0.55	0.49
7	GUNS FOR GOLD	20-1	999-1	NO	0.0%												0.62	0.58	0.55	0.41
8	MY FAVORITE SPIRIT	10-1	6-1	NO	0.0%												0.09	0.44	0.55	0.49
9	CQ FEATURED FIRST (AE)	15-1	8-1	NO	0.0%												0.62	0.58	0.55	0.25
10	WHISKEY WHISKEY (AE)	7/2	6-1	NO	0.0%												0.41	0.73	1.00	1.00

No.	CZone %	E (CZ%)	EP (CZ%)	P (CZ%)	PC (CZ%)	C (CZ%)	ANY (CZ%)	N/A (CZ%)	1st
8	48.9%	1 (34.0%)	8 (48.9%)			3 (0.0%)		5 (0.0%)	
10	48.9%	2 (34.8%)	10 (48.9%)			7 (0.0%)		6 (0.0%)	
4	35.1%	4 (35.1%)						9 (0.0%)	
2	34.8%								
1	34.0%								
3	0.0%								



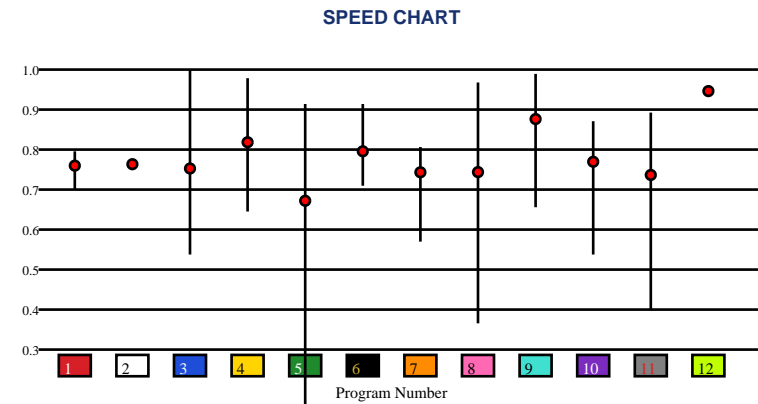


ALBUQUERQUE | 06/06/2026 | Race 3 | 330 Yards | Dirt | Maiden Claiming | Purse: \$16,600

Speed # Edge (>=3)		SIM Odds		SIM Speed #		1st Call Leader		Early Pace		Late Pace		Total Pace	
12	13	8	2-1	3	85.6	2	9.5%	8		8		8	
		3	5/2	8	82.1	11	8.8%	3		3		3	
		11	6-1	11	77.4	6	8.7%	12		12		12	
		4	15-1	4	76.5	1	8.5%	11		11		11	
		2	17-1	12	74.6	4	8.5%	9		9		9	
		12	21-1	2	74.2	12	8.3%	4		4		4	

Pace / Improvement / Times																				
No.	Horse	ML Odds	SIM Odds	PAR	PAR+	Early	Mid	Late	1/4	1/2	Class Move	Move by Lengths	1st Timer (3 Max)	Bullet & Go	Back Bullet	2nd Race Parability	Jockey Win	Jockey ITM	Trainer Win	Trainer ITM
1	JETBLACK DADDY	10-1	999-1	NO	0.0%												1.00	0.79	0.14	0.36
2	TIRO AL BLANCO CSJ	15-1	17-1	NO	0.0%												0.62	0.86	0.40	0.58
3	HARDCORE TROUBADOUR	9/2	5/2	NO	0.0%												0.62	0.86	0.40	0.58
4	OWN THE MOMENT	20-1	15-1	NO	0.0%												0.62	0.86	0.40	0.58
5	LOVIN THE MONEY	30-1	22-1	NO	0.0%												0.62	0.86	0.40	0.58
6	SHEZA HOTT CHIC	15-1	110-1	NO	0.0%												0.21	0.81	0.40	0.58
7	CASANOVA JACK	8-1	249-1	NO	0.0%												0.62	0.86	0.40	0.58
8	EYEAMSTILLTHEKING	3-1	2-1	NO	0.0%												0.44	0.70	0.40	0.58
9	KBAR TALK ABOUT RUN	6-1	90-1	NO	0.0%												0.73	1.00	1.00	1.00
10	CREAM DE LA CREME	20-1	90-1	NO	0.0%												0.62	0.86	0.06	0.38
11	ONE HANDSOME ROOSTER (AE)	30-1	6-1	NO	0.0%												0.73	1.00	0.40	0.58
12	JLB THE RED EYE (AE)	7/2	21-1	NO	0.0%												0.62	0.86	0.40	0.58

No.	CZone %	E (CZ%)	EP (CZ%)	P (CZ%)	PC (CZ%)	C (CZ%)	ANY (CZ%)	N/A (CZ%)	1st
1	0.0%							1 (0.0%)	
2	0.0%							2 (0.0%)	
3	0.0%							3 (0.0%)	
4	0.0%							4 (0.0%)	
5	0.0%							5 (0.0%)	
6	0.0%							6 (0.0%)	
								7 (0.0%)	
								8 (0.0%)	
								9 (0.0%)	
								10 (0.0%)	
								11 (0.0%)	
								12 (0.0%)	



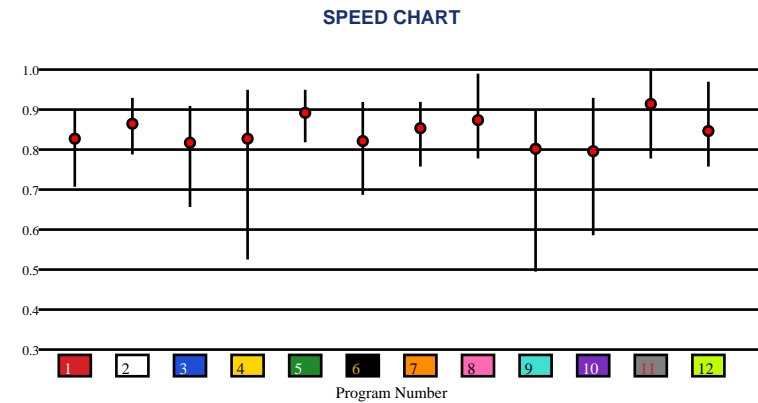


ALBUQUERQUE | 06/06/2026 | Race 4 | 350 Yards | Dirt | Claiming | Purse: \$15,800

Speed # Edge (>=3)	SIM Odds		SIM Speed #		1st Call Leader		Early Pace		Late Pace		Total Pace	
	11	7/2	1	88.1	4	9.4%	11		11		11	
	4	5-1	11	87.8	6	9.0%	1		1		1	
	9	7-1	5	87.7	10	8.9%	3		3		3	
	1	7-1	7	86.4	9	8.8%	4		4		4	
	3	8-1	6	84.8	8	8.5%	9		9		9	
	6	10-1	3	84.7	11	8.4%	6		6		6	

Pace / Improvement / Times																				
No.	Horse	ML Odds	SIM Odds	PAR	PAR+	Early	Mid	Late	1/4	1/2	Class Move	Move by Lengths	1st Timer (3 Max)	Bullet & Go	Back Bullet	2nd Race Parability	Jockey Win	Jockey ITM	Trainer Win	Trainer ITM
1	VIVA LE REBA	10-1	7-1	NO	0.0%												0.23	0.35	1.00	0.81
2	HONEY BUNNY	15-1	142-1	NO	0.0%												0.92	1.00	1.00	0.81
3	MR RACY CORONA	9/2	8-1	NO	0.0%												0.75	0.46	1.00	0.81
4	JESS A FAST PRIZE	8-1	5-1	NO	0.0%												0.55	0.59	1.00	1.00
5	JAIRO MR	3-1	28-1	NO	0.0%												0.75	0.93	1.00	0.81
6	JESS CASH PLEASE	6-1	10-1	NO	0.0%												0.33	0.41	1.00	0.57
7	ACCESS GRANTED	15-1	17-1	NO	0.0%												0.63	0.63	1.00	0.81
8	TUSK	7/2	99-1	NO	0.0%												0.63	0.63	1.00	0.81
9	LADY APOLLITICAL	20-1	7-1	NO	0.0%												1.00	0.62	1.00	0.81
10	EYES JESS FAST	20-1	27-1	NO	0.0%												0.60	0.74	1.00	0.81
11	SW GLORIOUS SONG (AE)	30-1	7/2	NO	0.0%												0.55	0.59	1.00	1.00
12	EYE AM FAST (AE)	30-1	52-1	NO	0.0%												0.63	0.63	1.00	0.67

No.	CZone %	E (CZ%)	EP (CZ%)	P (CZ%)	PC (CZ%)	C (CZ%)	ANY (CZ%)	N/A (CZ%)	1st
1	0.0%							1 (0.0%)	
2	0.0%							2 (0.0%)	
3	0.0%							3 (0.0%)	
4	0.0%							4 (0.0%)	
5	0.0%							5 (0.0%)	
6	0.0%							6 (0.0%)	
								7 (0.0%)	
								8 (0.0%)	
								9 (0.0%)	
								10 (0.0%)	
								11 (0.0%)	
								12 (0.0%)	



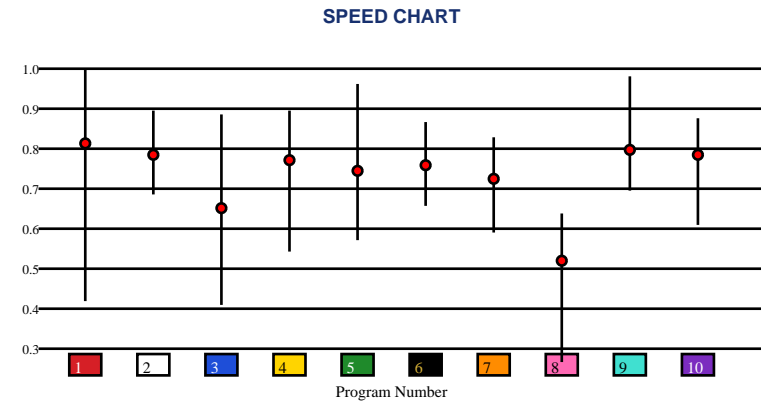


ALBUQUERQUE | 06/06/2026 | Race 5 | 3.95 Furlongs | Dirt | Allowance | Purse: \$28,800

Speed # Edge (>=3)		SIM Odds		SIM Speed #		1st Call Leader		Early Pace		Late Pace		Total Pace	
4	6	3	8/5	3	86.9	3	17.9%	8	83.7	8	63.0	8	146.7
		9	6-1	9	83.1	6	11.1%	3		3		3	
		1	6-1	6	82.7	5	10.7%	4		4		4	
		4	7-1	4	79.8	1	10.5%	9		9		9	
		6	12-1	7	77.7	4	10.0%	10		10		10	
		5	23-1	10	76.3	7	9.9%	6		6		6	

Pace / Improvement / Times																				
No.	Horse	ML Odds	SIM Odds	PAR	PAR+	Early	Mid	Late	1/4	1/2	Class Move	Move by Lengths	1st Timer (3 Max)	Bullet & Go	Back Bullet	2nd Race Parability	Jockey Win	Jockey ITM	Trainer Win	Trainer ITM
1	IAM OUTTA HERE	20-1	6-1	NO	0.0%												0.76	0.69	0.57	0.69
2	WISHO	10-1	37-1	NO	0.0%												1.00	0.64	0.57	0.69
3	EL HUARACHE PRIETO	7/2	8/5	NO	0.0%												1.00	0.64	1.00	1.00
4	RUN BUBBA RUN	9/2	7-1	NO	0.0%												0.86	1.00	0.29	0.68
5	WASP	20-1	23-1	NO	0.0%												0.30	0.48	0.48	0.45
6	PRIZED PATRIOT	12-1	12-1	NO	0.0%												0.76	0.69	0.57	0.69
7	STREAKIN BIG DADDY	12-1	26-1	NO	0.0%												0.76	0.69	0.57	0.69
8	COLFAX KID	15-1	1001-1	NO	0.0%	▲		▲									0.40	0.76	0.50	0.94
9	SPACE COWWBOYY (AE)	6-1	6-1	NO	0.0%												0.76	0.69	0.57	0.69
10	CHICKN HOCK (AE)	5/2	42-1	NO	0.0%												1.00	0.64	0.57	0.39

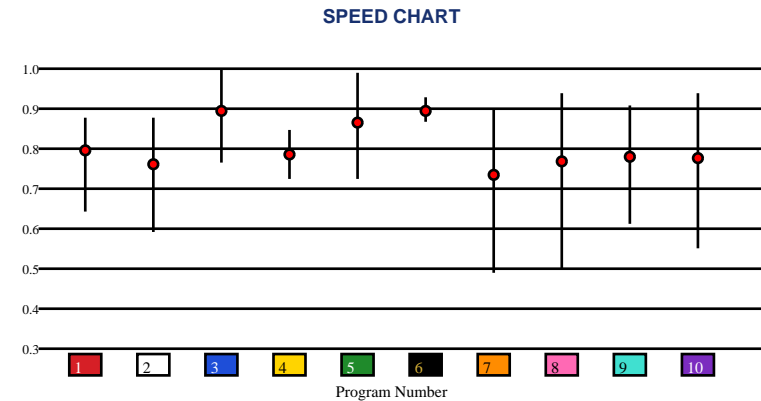
No.	CZone %	E (CZ%)	EP (CZ%)	P (CZ%)	PC (CZ%)	C (CZ%)	ANY (CZ%)	N/A (CZ%)	1st
2	65.7%	5 (16.8%)	4 (26.0%)	9 (13.4%)	7 (27.8%)	3 (33.0%)	2 (65.7%)	1 (0.0%)	
8	52.4%	10 (15.3%)					8 (52.4%)	6 (0.0%)	
3	33.0%								
7	27.8%								
4	26.0%								
5	16.8%								



Speed # Edge (>=3)	SIM Odds		SIM Speed #		1st Call Leader		Early Pace		Late Pace		Total Pace	
10	5/2	3	90.2	8	11.2%	3		3		3		
3	3-1	6	87.6	2	10.4%	10		10		10		
8	5-1	10	87.3	4	10.4%	8		8		8		
1	9-1	1	85.3	3	10.1%	6		6		6		
2	13-1	5	82.7	5	10.0%	2		2		2		
5	17-1	8	82.4	1	10.0%	4		4		4		

Pace / Improvement / Times																				
No.	Horse	ML Odds	SIM Odds	PAR	PAR+	Early	Mid	Late	1/4	1/2	Class Move	Move by Lengths	1st Timer (3 Max)	Bullet & Go	Back Bullet	2nd Race Parability	Jockey Win	Jockey ITM	Trainer Win	Trainer ITM
1	A DASH OF DAHLIA	20-1	9-1	NO	0.0%												0.36	0.62	0.99	0.66
2	DOCS DINERO	7/2	13-1	NO	0.0%												0.42	0.62	0.99	0.66
3	HAPPYOUR	9/5	3-1	NO	0.0%												0.38	1.00	0.99	1.00
4	CAFAYATE	10-1	1001-1	NO	0.0%												0.23	0.59	1.00	0.73
5	PEACHEZZ	8-1	17-1	NO	0.0%												0.36	0.62	0.99	0.66
6	MERLOT ARRIVES IN 25	6-1	19-1	NO	0.0%												1.00	0.74	0.99	0.66
7	MANTRA	20-1	110-1	NO	0.0%												0.06	0.48	0.99	0.66
8	DADDYS MONEE	15-1	5-1	NO	0.0%												0.31	0.46	0.99	0.66
9	RENEGADE REBA	12-1	166-1	NO	0.0%												0.14	0.41	0.99	0.25
10	A CARTELS DREAM	12-1	5/2	NO	0.0%												0.36	0.62	0.99	0.66

No.	CZone %	E (CZ%)	EP (CZ%)	P (CZ%)	PC (CZ%)	C (CZ%)	ANY (CZ%)	N/A (CZ%)	1st
1	0.0%							1 (0.0%)	
2	0.0%							2 (0.0%)	
3	0.0%							3 (0.0%)	
4	0.0%							4 (0.0%)	
5	0.0%							5 (0.0%)	
6	0.0%							6 (0.0%)	
								7 (0.0%)	
								8 (0.0%)	
								9 (0.0%)	
								10 (0.0%)	



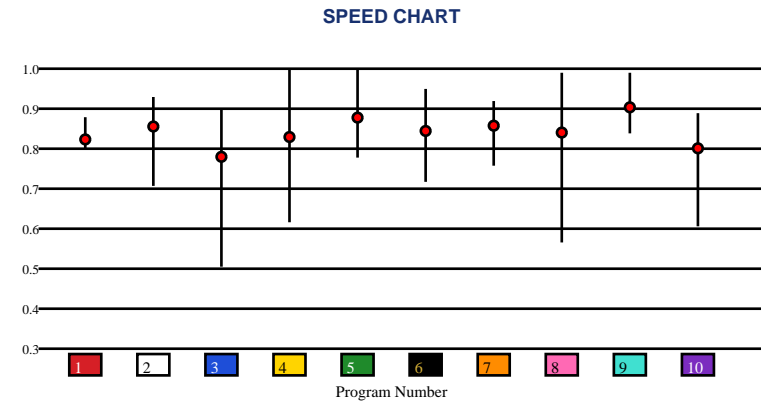


ALBUQUERQUE | 06/06/2026 | Race 7 | 330 Yards | Dirt | Claiming | Purse: \$21,200

Speed # Edge (>=3)		SIM Odds		SIM Speed #		1st Call Leader		Early Pace		Late Pace		Total Pace	
5	3	2	7/2	9	88.4	2	10.7%	2		2		2	
		6	5-1	2	87.9	3	10.5%	6		6		6	
		9	5-1	5	86.2	10	10.5%	5		5		5	
		5	8-1	6	85.3	9	10.4%	9		9		9	
		4	10-1	7	83.9	8	10.2%	8		8		8	
		8	10-1	1	81.7	7	9.8%	4		4		4	

Pace / Improvement / Times																				
No.	Horse	ML Odds	SIM Odds	PAR	PAR+	Early	Mid	Late	1/4	1/2	Class Move	Move by Lengths	1st Timer (3 Max)	Bullet & Go	Back Bullet	2nd Race Parability	Jockey Win	Jockey ITM	Trainer Win	Trainer ITM
1	TF EYESA DASHIN	10-1	499-1	NO	0.0%												0.76	0.63	0.78	0.57
2	MELEROS TEQUILA	3-1	7/2	NO	0.0%												0.76	0.63	0.78	0.57
3	SEZA BOLD JESSE	20-1	62-1	NO	0.0%												0.76	0.63	0.78	0.57
4	JESSES DINERO	15-1	10-1	NO	0.0%												0.30	0.38	1.00	0.53
5	JESS CALL ME MASON	8-1	8-1	NO	0.0%												0.73	0.64	0.60	0.16
6	KVN CORRE	9/2	5-1	NO	0.0%												1.00	0.50	0.78	0.57
7	SHADE FACTOR	7/2	23-1	NO	0.0%												0.76	0.63	0.78	0.57
8	EYEONAGOODTIME	6-1	10-1	NO	0.0%												1.00	1.00	0.78	0.57
9	SOUTHERN FIRES	15-1	5-1	NO	0.0%												0.76	0.63	0.75	1.00
10	ESSENTIAL BIZNEZ	20-1	16-1	NO	0.0%												0.76	0.63	0.78	0.57

No.	CZone %	E (CZ%)	EP (CZ%)	P (CZ%)	PC (CZ%)	C (CZ%)	ANY (CZ%)	N/A (CZ%)	1st
1	0.0%							1 (0.0%)	
2	0.0%							2 (0.0%)	
3	0.0%							3 (0.0%)	
4	0.0%							4 (0.0%)	
5	0.0%							5 (0.0%)	
6	0.0%							6 (0.0%)	
								7 (0.0%)	
								8 (0.0%)	
								9 (0.0%)	
								10 (0.0%)	



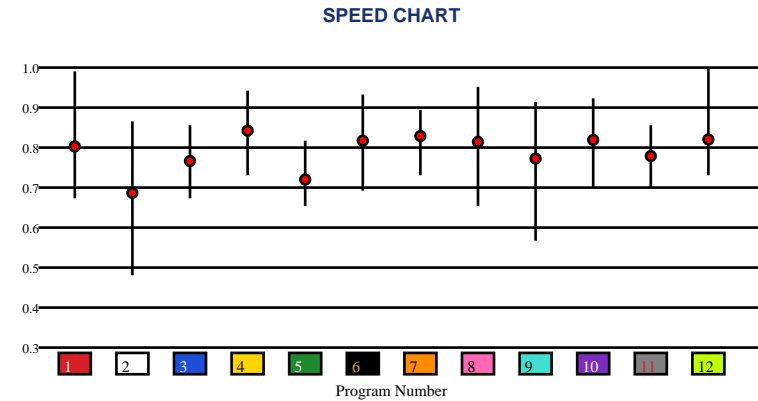


ALBUQUERQUE | 06/06/2026 | Race 8 | 400 Yards | Dirt | Allowance | Purse: \$32,300

Speed # Edge (>=3)		SIM Odds		SIM Speed #		1st Call Leader		Early Pace		Late Pace		Total Pace	
1	10	1	2-1	1	91.7	3	9.0%	1		1		1	
		2	7/2	12	90.1	8	8.9%	2		2		2	
		12	6-1	4	89.9	1	8.8%	7		7		7	
		4	7-1	7	87.2	9	8.6%	12		12		12	
		7	15-1	2	86.1	10	8.5%	11		11		11	
		8	24-1	3	85.7	7	8.4%	4		4		4	

Pace / Improvement / Times																				
No.	Horse	ML Odds	SIM Odds	PAR	PAR+	Early	Mid	Late	1/4	1/2	Class Move	Move by Lengths	1st Timer (3 Max)	Bullet & Go	Back Bullet	2nd Race Parability	Jockey Win	Jockey ITM	Trainer Win	Trainer ITM
1	BELLAQUEENGR	20-1	2-1	NO	0.0%												0.22	0.67	0.84	0.70
2	HM KINGBROOKSTONE	8-1	7/2	NO	0.0%												0.42	0.78	0.84	0.70
3	LEFTIE	3-1	26-1	NO	0.0%												0.42	0.78	0.84	0.70
4	BIGEAGLECARTEL	20-1	7-1	NO	0.0%												0.67	1.00	0.84	0.70
5	EYE AM NUMBER ONE	30-1	1001-1	NO	0.0%												0.10	0.77	1.00	0.82
6	KING OF CROWNS	10-1	37-1	NO	0.0%												0.42	0.78	0.84	0.70
7	JULIANA	6-1	15-1	NO	0.0%												1.00	0.75	0.68	0.28
8	FLASHN MILAGRO	15-1	24-1	NO	0.0%												0.36	0.95	0.84	0.70
9	MY DANDELION WINE	30-1	249-1	NO	0.0%												0.15	0.56	0.84	0.70
10	PRINCE DRUE DRUE	15-1	99-1	NO	0.0%												0.42	0.78	0.84	0.70
11	ANGELS IN THE CLOUDS (AE)	7/2	1001-1	NO	0.0%												0.42	0.78	0.84	1.00
12	MM THE GRAY ROCKET (AE)	9/2	6-1	NO	0.0%												0.42	0.78	0.84	0.70

No.	CZone %	E (CZ%)	EP (CZ%)	P (CZ%)	PC (CZ%)	C (CZ%)	ANY (CZ%)	N/A (CZ%)	1st
1	0.0%							1 (0.0%)	
2	0.0%							2 (0.0%)	
3	0.0%							3 (0.0%)	
4	0.0%							4 (0.0%)	
5	0.0%							5 (0.0%)	
6	0.0%							6 (0.0%)	
								7 (0.0%)	
								8 (0.0%)	
								9 (0.0%)	
								10 (0.0%)	
								11 (0.0%)	
								12 (0.0%)	





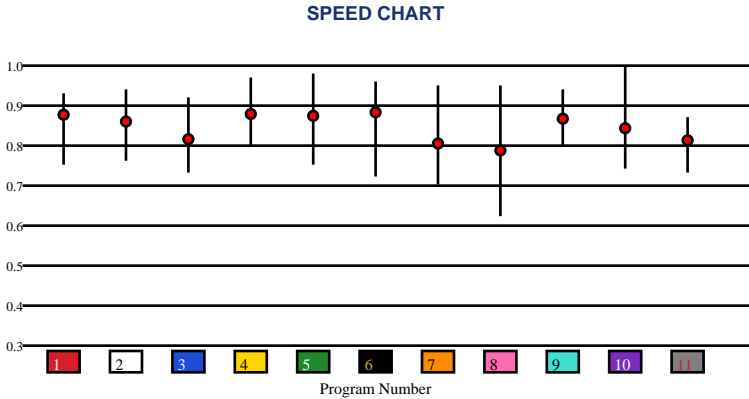
ALBUQUERQUE | 06/06/2026 | Race 9 | 400 Yards | Dirt | Stk 100k | Purse: \$100,000

Speed # Edge (>=3)	SIM Odds		SIM Speed #		1st Call Leader		Early Pace		Late Pace		Total Pace	
6	5/2	6	94.3	2	10.1%	5		5		5		
1	4-1	1	93.5	7	10.1%	6		6		6		
5	9/2	5	90.6	5	9.7%	1		1		1		
10	12-1	4	90.6	9	9.4%	4		4		4		
8	12-1	9	89.1	6	9.4%	10		10		10		
4	14-1	2	88.5	1	9.2%	9		9		9		

Pace / Improvement / Times

No.	Horse	ML Odds	SIM Odds	PAR	PAR+	Early	Mid	Late	1/4	1/2	Class Move	Move by Lengths	1st Timer (3 Max)	Bullet & Go	Back Bullet	2nd Race Parability	Jockey Win	Jockey ITM	Trainer Win	Trainer ITM
1	WYNSTON	8-1	4-1	NO	0.0%												0.62	0.80	0.64	0.54
2	COWBOY 1	15-1	24-1	NO	0.0%												0.62	0.80	0.64	0.54
3	SPECIAL SESSON	15-1	42-1	NO	0.0%												0.62	0.80	0.64	0.54
4	FAMOUS N RELENTLESS	7/2	14-1	NO	0.0%												0.62	0.80	0.64	0.54
5	KJ XQUIZIT JESS	3-1	9/2	NO	0.0%												0.60	1.00	1.00	1.00
6	FAUST	10-1	5/2	NO	0.0%												0.62	0.80	0.28	0.61
7	LAREDA	20-1	58-1	NO	0.0%												0.62	0.80	0.64	0.20
8	RELENTLESS WINE	20-1	12-1	NO	0.0%												0.62	0.80	0.64	0.54
9	APOLITICAL VALOR	9/2	58-1	NO	0.0%												0.33	0.56	0.64	0.35
10	THE DIESEL TRAIN	6-1	12-1	NO	0.0%												1.00	0.83	0.64	0.54
11	SAN FERNANDO CREEK (AE)	30-1	1001-1	NO	0.0%												0.55	0.80	0.64	0.54

No.	CZone %	E (CZ%)	EP (CZ%)	P (CZ%)	PC (CZ%)	C (CZ%)	ANY (CZ%)	N/A (CZ%)	1st
1	0.0%							1 (0.0%)	
2	0.0%							2 (0.0%)	
3	0.0%							3 (0.0%)	
4	0.0%							4 (0.0%)	
5	0.0%							5 (0.0%)	
6	0.0%							6 (0.0%)	
								7 (0.0%)	
								8 (0.0%)	
								9 (0.0%)	
								10 (0.0%)	
								11 (0.0%)	



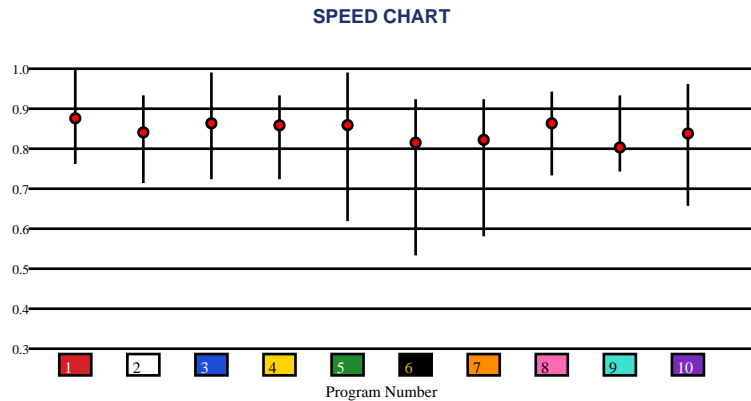


ALBUQUERQUE | 06/06/2026 | Race 10 | 400 Yards | Dirt | Stk 850000 | Purse: \$850,000

Speed # Edge (>=3)	SIM Odds		SIM Speed #		1st Call Leader		Early Pace		Late Pace		Total Pace	
	5	2-1	5	98.1	10	10.8%	5		5		5	
	10	6-1	1	96.2	8	10.4%	1		1		1	
	1	7-1	10	95.3	9	10.4%	10		10		10	
	7	8-1	3	94.7	2	10.3%	8		8		8	
	3	9-1	8	93.6	4	10.3%	3		3		3	
	6	9-1	6	91.9	1	9.9%	7		7		7	

Pace / Improvement / Times																				
No.	Horse	ML Odds	SIM Odds	PAR	PAR+	Early	Mid	Late	1/4	1/2	Class Move	Move by Lengths	1st Timer (3 Max)	Bullet & Go	Back Bullet	2nd Race Parability	Jockey Win	Jockey ITM	Trainer Win	Trainer ITM
1	GF SHES SINFUL	3-1	7-1	NO	0.0%												0.50	0.74	1.00	0.73
2	COWBOY CORONA 123	15-1	58-1	NO	0.0%												1.00	0.99	1.00	0.73
3	MIDNITE SMOKIN	8-1	9-1	NO	0.0%												0.60	0.75	0.99	1.00
4	EAGLES DIAMOND	20-1	44-1	NO	0.0%												0.45	0.59	0.83	0.79
5	FLYING CHANCE	9/2	2-1	NO	0.0%												0.77	1.00	0.99	1.00
6	JARVIS V	15-1	9-1	NO	0.0%												0.60	0.75	0.76	0.94
7	POLITICIAN V	10-1	8-1	NO	0.0%												0.60	0.75	0.76	0.94
8	ENVESTOR	7/2	20-1	NO	0.0%												0.60	0.75	0.83	0.79
9	SHIMMERY	20-1	142-1	NO	0.0%												0.28	0.41	0.33	0.21
10	RF RUNAWAY COWBOY	6-1	6-1	NO	0.0%												0.60	0.75	0.83	0.79

No.	CZone %	E (CZ%)	EP (CZ%)	P (CZ%)	PC (CZ%)	C (CZ%)	ANY (CZ%)	N/A (CZ%)	1st
1	0.0%							1 (0.0%)	
2	0.0%							2 (0.0%)	
3	0.0%							3 (0.0%)	
4	0.0%							4 (0.0%)	
5	0.0%							5 (0.0%)	
6	0.0%							6 (0.0%)	
								7 (0.0%)	
								8 (0.0%)	
								9 (0.0%)	
								10 (0.0%)	



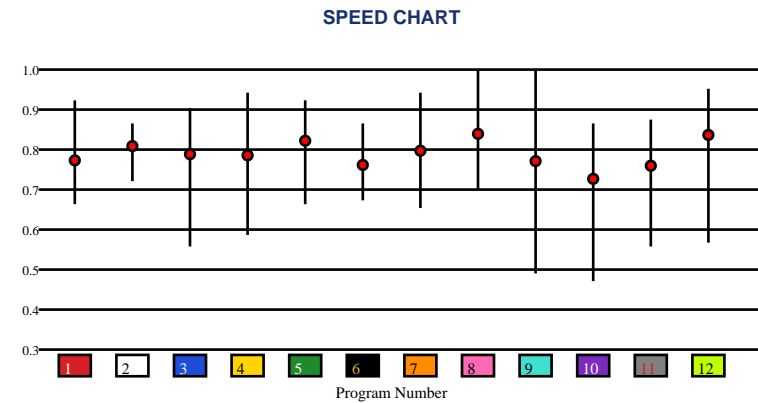


ALBUQUERQUE | 06/06/2026 | Race 11 | 2 Furlongs | Dirt | Claiming | Purse: \$16,200

Speed # Edge (>=3)		SIM Odds		SIM Speed #		1st Call Leader		Early Pace		Late Pace		Total Pace	
3	3	3	9/5	3	91.4	3	9.7%	3		3		3	
		12	5-1	1	87.4	11	9.2%	9		9		9	
		9	6-1	12	84.2	6	8.7%	1		1		1	
		1	7-1	2	83.6	7	8.4%	12		12		12	
		4	17-1	5	81.9	1	8.4%	11		11		11	
		5	21-1	4	80.8	8	8.3%	6		6		6	

Pace / Improvement / Times																				
No.	Horse	ML Odds	SIM Odds	PAR	PAR+	Early	Mid	Late	1/4	1/2	Class Move	Move by Lengths	1st Timer (3 Max)	Bullet & Go	Back Bullet	2nd Race Parability	Jockey Win	Jockey ITM	Trainer Win	Trainer ITM
1	SR FEAR THE STORM	3-1	7-1	NO	0.0%												0.25	1.00	0.77	0.56
2	POLTICAL CHIMES	10-1	70-1	NO	0.0%												0.62	0.62	0.77	0.56
3	CATCH N TELL	6-1	9/5	NO	0.0%												0.14	0.56	0.77	0.56
4	DASHAROO	8-1	17-1	NO	0.0%												0.45	0.79	0.77	0.56
5	ONE MIGHTY EFFORT	15-1	21-1	NO	0.0%												1.00	1.00	1.00	0.48
6	A REVENANT DYNASTY	9/2	99-1	NO	0.0%												0.31	0.62	0.77	0.56
7	CARTEL DRUNK PLAYBOY	15-1	42-1	NO	0.0%												0.42	0.83	0.77	0.56
8	KOBE D MAN	20-1	22-1	NO	0.0%												0.23	0.80	0.32	0.21
9	JM THRU FIRE	7/2	6-1	NO	0.0%												0.45	0.79	0.96	1.00
10	LA BELLA JULIA	30-1	1001-1	NO	0.0%												0.06	0.64	0.56	0.61
11	OJD STEAMING TRAIN (AE)	30-1	1001-1	NO	0.0%												1.00	1.00	1.00	0.48
12	BILLY DE KID (AE)	20-1	5-1	NO	0.0%												0.42	0.83	0.77	0.56

No.	CZone %	E (CZ%)	EP (CZ%)	P (CZ%)	PC (CZ%)	C (CZ%)	ANY (CZ%)	N/A (CZ%)	1st
12	31.9%	8 (30.1%)						1 (0.0%)	
8	30.1%	12 (31.9%)						2 (0.0%)	
1	0.0%							3 (0.0%)	
2	0.0%							4 (0.0%)	
4	0.0%							5 (0.0%)	
3	0.0%							6 (0.0%)	
								7 (0.0%)	
								9 (0.0%)	
								10 (0.0%)	
								11 (0.0%)	



SMART SHEETS

[Back to Race Summary](#)

Data Guide & Structural Interpretation Framework

DATA FOUNDATION

All Smart Sheets metrics are derived from up to the horse's 10 most recent races, where applicable. Calculations are structured to emphasize recent form, reflect demonstrated performance patterns, and reduce distortion from outdated efforts.

More recent races carry greater interpretive weight within projections and structural evaluations. This ensures current condition and form cycles are prioritized over distant historical performance.

PERFORMANCE STANDARD

PAR (Race Standard)

PAR indicates whether a horse has previously run a speed figure equal to or greater than today's race standard.

Designations include:

'YES' – Has met or exceeded today's PAR

'MAYBE' -1 to -5 – Finished within 1 to 5 speed points of today's PAR

'NO' – Has not approached today's PAR level

The MAYBE designation identifies horses that have demonstrated competitive proximity without fully qualifying.

PAR+

PAR+ represents the percentage of simulations in which the horse meets or exceeds today's PAR standard. Higher percentages indicate more frequent projected competitiveness at today's performance level. PAR+ reflects projected probability rather than past qualification alone.

Performance Context

Approximately 5 Speed or Pace points equate to 1 length. This conversion provides scale when interpreting speed separation, PAR proximity, pace advantage, and structural positioning. Small numeric gaps may represent marginal positional differences, while larger separations may reflect more meaningful competitive distance.

SPEED & VALUE STRUCTURE

Speed # Edge (Minimum Threshold: 3 Points)

Speed # Edge highlights meaningful separation between projected top speed figures. An edge is recognized only when a horse holds a minimum 3-point advantage over the next highest projected figure.

Using the structural scale:

3 points ≈ slightly more than half a length

5 points ≈ approximately 1 length

This threshold filters out normal figure variance and isolates measurable separation.

SIM Odds

SIM Odds represent fair-value odds derived from simulation probability. They reflect the model's internal estimate of each horse's likelihood of winning relative to the field.

When compared to Morning Line or live wagering odds, differences between projected probability and market pricing may help identify potential mispricing or value discrepancies.

Smart Sheets does not make wagering recommendations. SIM Odds provide a structured framework for evaluating probability versus price.

SIM Speed

SIM Speed is a projected performance figure generated from race simulations. It estimates how fast the horse is expected to run today under modeled pace and race-flow conditions. The number is most useful when evaluated relative to the field rather than in isolation.

Speed Chart

The Speed Chart visually displays each horse's recent speed range:

'**Top**' of line – Maximum figure

'**Bottom**' of line – Minimum figure

'**Red Dot**' – Average figure

This allows evaluation of ceiling, floor, consistency, and volatility.

PACE PROJECTIONS

1st Call Leader Projection

This metric estimates the likelihood a horse will be on the lead at the first call. It helps define projected early race structure and potential pace pressure.

Early & Late Pace

These columns reflect performance strength in the front half and finishing phase of the race. Evaluating these collectively helps visualize projected race flow and potential positional advantages.

Total Pace

Total Pace represents combined early and late performance strength. Separation within this column may indicate in-race structural advantage when evaluated relative to the field.

POSITIONAL PROFILE

C-Zone (Comfort Zone)

C-Zone measures how closely today's projected race conditions align with the pace environment under which the horse produced its best competitive finish. It evaluates race fit rather than raw speed. Higher percentages indicate stronger alignment between projected structure and demonstrated success conditions.

Pace View

Pace View categorizes horses based on positional tendencies during competitive finishes.

'E' – Front-runner

'EP' – Lead or press

'P' – Tactical stalker

'PC' – Versatile stalker/closer

'C' – Closer

'ANY' – Demonstrated multiple effective styles

'N/A' – No competitive finish within 5 lengths

'1st' – First-time starter

The percentage displayed next to each horse represents its C-Zone score, combining positional tendency with projected structural fit.

DEVELOPMENT & MOVEMENT SIGNALS

Class Move

Indicates whether a horse is moving up in class, moving down in class, or remaining at a similar level. Class shifts may influence competitive positioning within today's race structure.

First-Time Starter Rank

Ranks debut runners using internal evaluation metrics for comparison within the field. The maximum First-Time Starter score is 3, representing the strongest relative rating among debut runners in the race.

Workout Indicators

Bullet / Bullet & Go indicators reflect strong recent workouts relative to the field and may signal preparation sharpness.

2nd Race Parability

Applies to lightly raced horses making their second start. Indicates whether projected development meets or exceeds today's PAR standard.

This metric may carry increased relevance when few or no horses have previously met today's PAR threshold.

CONNECTION STRENGTH

Jockey and Trainer ratings are scaled within the field and color-coded to reflect relative strength.

COLOR FORMATTING & STRUCTURAL EDGE IDENTIFICATION

Smart Sheets uses color formatting and structured layout to visually identify potential structural advantages, including meaningful speed separation, PAR qualification or proximity, projected pace leadership, connection strength, and simulation pricing disparities.

Interpretation of how these elements interact remains the responsibility of the user.

DISCLAIMER

Smart Sheets data is compiled using information derived from reputable industry sources and publicly available racing data. All data is used in good faith and presented for informational and educational purposes. While every effort is made to ensure accuracy and completeness, errors, omissions, or data inconsistencies may occur and are unintended.

Smart Sheets is a decision-support tool and does not guarantee outcomes.

RESPONSIBLE WAGERING NOTICE

Horse racing wagering involves financial risk. Users should never wager more than they can afford to lose. If you cannot afford to lose anything, you should not gamble.

If you believe you may have a gambling problem, seek assistance immediately through a licensed professional or recognized responsible gaming organization.

All wagering decisions are solely the responsibility of the user.