



See the Edge in Every Race
CHURCHILL DOWNS 06/26/2026

How to Use Smart Sheets → <https://horseracingtoday.net/wp-content/uploads/2026/03/HRTSmartSheetsExplanations.pdf>

Race	Distance	Surface	Race Type	Purse
Race 1	6 1/2 Furlongs	Dirt	Claiming	\$36,000
Race 2	7 Furlongs	Dirt	Claiming	\$60,000
Race 3	1 1/16 Miles	Dirt	Allowance Optional Claiming	\$127,000
Race 4	6 Furlongs	Dirt	Maiden Claiming	\$35,000
Race 5	5 Furlongs	Turf	Maiden Special Weight	\$120,000
Race 6	6 1/2 Furlongs	Dirt	Claiming	\$89,000
Race 7	6 1/2 Furlongs	Dirt	Claiming	\$62,000
Race 8	1 1/16 Miles	Dirt	Maiden Special Weight	\$120,000
Race 9	1 Mile	Turf	Allowance	\$127,000
Race 10	1 1/8 Miles	Dirt	Allowance Optional Claiming	\$134,000
Race 11	1 1/16 Miles	Dirt	Starter Allowance	\$83,000
Appendix			Smart Sheets Reference Guide	

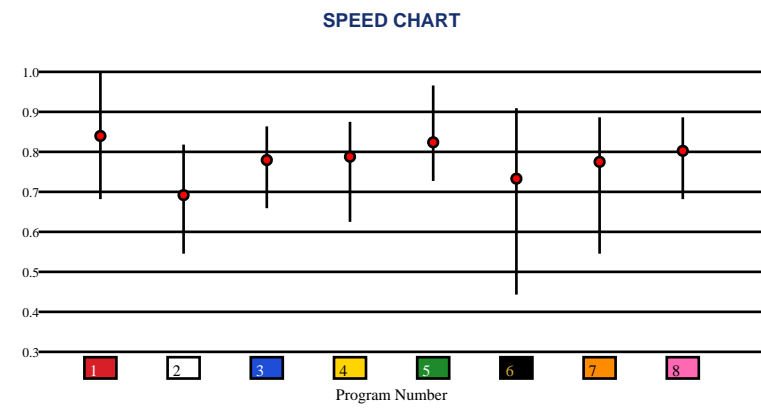


CHURCHILL DOWNS | 06/26/2026 | Race 1 | 6 1/2 Furlongs | Dirt | Claiming | Purse: \$36,000

Speed # Edge (>=3)	SIM Odds	SIM Speed #	1st Call Leader	Early Pace	Late Pace	Total Pace
5	2-1	5 75.4	5 42.6%	5 93.7	8 85.7 (+11)	5 166.3
1	5-1	8 73.1	1 31.4%	1 89.7	4 74.7	8 162.3
4	5-1	1 72.5	3 13.1%	3 87.7	5 72.7	4 161.3
6	6-1	4 69.8	4 5.3%	4 86.7	6 69.3	1 156.0
8	6-1	3 67.1	7 4.1%	7 86.3	2 67.7	3 155.3
7	28-1	6 65.6	2 2.9%	6 78.7	3 67.7	6 148.0

Pace / Improvement / Times																				
No.	Horse	ML Odds	SIM Odds	PAR	PAR+	Early	Mid	Late	1/4	1/2	Class Move	Move by Lengths	1st Timer (3 Max)	Bullet & Go	Back Bullet	2nd Race Parability	Jockey Win	Jockey ITM	Trainer Win	Trainer ITM
1	MCILROY	4-1	5-1	YES	13.6%	▲	▲		▲		▼	-1.0					0.23	0.46	0.42	0.83
2	POETIC WORDS	20-1	999-1	NO	0.0%			▲		▲	▲	0.6					0.38	1.00	0.32	0.67
3	NEXT TIME	10-1	37-1	NO	0.0%						▲	1.4					0.47	0.61	1.00	0.80
4	DUKE OF SUGGINS	6-1	5-1	NO	14.3%						▲	0.4					0.43	0.53	0.96	0.92
5	IMPAVIDO	5/2	2-1	YES	24.3%	▲	▲		▲		▼	-1.2					0.63	0.68	0.96	0.92
6	VINO DOMINUS	7/2	6-1	MAYBE -4	12.8%			▲	▲	▲	▲	1.4					1.00	0.98	0.94	0.97
7	JUST LIKE MAX	5-1	28-1	NO	0.0%			▲			▼	-0.8					0.18	0.49	0.12	1.00
8	WAR MUNNY	8-1	6-1	NO	4.9%	▲	▲				→	0.0					0.33	0.65	0.76	0.91

No.	CZone %	E (CZ%)	EP (CZ%)	P (CZ%)	PC (CZ%)	C (CZ%)	ANY (CZ%)	N/A (CZ%)	1st
1	33.9%	3 (18.4%)		5 (10.8%)		1 (33.9%)			
3	18.4%	6 (1.4%)				2 (7.1%)			
4	10.9%					4 (10.9%)			
5	10.8%					7 (0.0%)			
2	7.1%					8 (4.9%)			
8	4.9%								



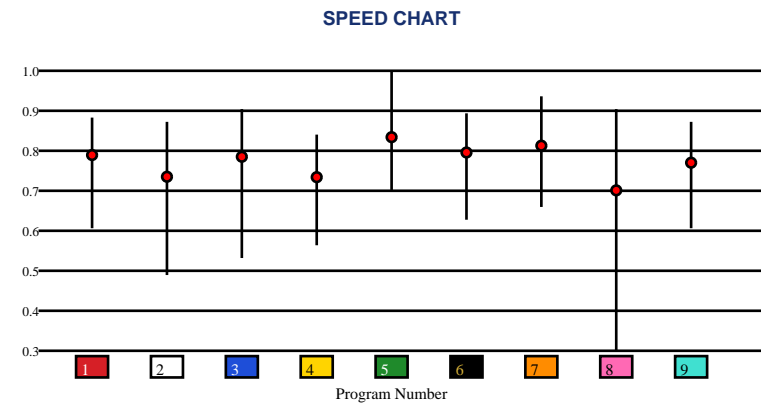


CHURCHILL DOWNS | 06/26/2026 | Race 2 | 7 Furlongs | Dirt | Claiming | Purse: \$60,000

Speed # Edge (>=3)		SIM Odds		SIM Speed #		1st Call Leader		Early Pace		Late Pace		Total Pace	
7	4	8	5/2	7	81.5	8	63.0%	8	93.3 (+8)	5	86.0	8	172.3
		7	9/2	8	78.2	2	9.9%	7	85.3	6	84.7	1	167.7
		3	5-1	3	77.4	7	7.7%	2	85.0	1	84.3	7	166.3
		2	5-1	1	77.4	1	5.9%	9	83.3	3	83.3	3	163.3
		5	13-1	5	75.6	9	4.7%	1	83.3	7	81.0	2	162.3
		1	14-1	6	75.5	4	4.6%	3	80.0	8	79.0	5	155.7

Pace / Improvement / Times																				
No.	Horse	ML Odds	SIM Odds	PAR	PAR+	Early	Mid	Late	1/4	1/2	Class Move	Move by Lengths	1st Timer (3 Max)	Bullet & Go	Back Bullet	2nd Race Parability	Jockey Win	Jockey ITM	Trainer Win	Trainer ITM
1	PROGENY	10-1	14-1	YES	39.5%			▲			▼	-1.2					0.46	0.55	0.35	0.46
2	SUNSET HARBOUR	15-1	5-1	YES	39.4%		▲			▲	→	0.0					0.23	0.46	0.80	0.43
3	PROTOMAGIC	7/2	5-1	YES	44.5%		▲		▲	▲	→	0.0					0.78	0.86	0.68	1.00
4	MIZMALICE	12-1	42-1	MAYBE -1	26.7%						→	0.0					0.28	0.52	0.44	0.48
5	PATTY CAKES	9/2	13-1	YES	36.1%						▼	-0.2					0.54	0.78	0.95	0.69
6	I HAD THAT ONE TOO	8-1	25-1	YES	36.3%						▲	0.4					0.38	1.00	0.13	0.86
7	NILO'S ROSE	5/2	9/2	YES	55.7%			▲			▲	0.2					1.00	0.98	1.00	0.83
8	Q'S YOUR MAMA	4-1	5/2	YES	47.0%	▲	▲			▲	▲	0.4					0.47	0.67	0.25	0.41
9	ANIMAL FRIES	20-1	70-1	YES	31.7%					▲	▲	0.6					0.18	0.49	0.58	0.10

No.	CZone %	E (CZ%)	EP (CZ%)	P (CZ%)	PC (CZ%)	C (CZ%)	ANY (CZ%)	N/A (CZ%)	1st
9	92.1%	8 (63.0%)	2 (6.2%)	1 (16.9%)		3 (4.6%)	9 (92.1%)		
8	63.0%		7 (55.8%)	5 (1.5%)		4 (11.3%)			
7	55.8%					6 (7.2%)			
1	16.9%								
4	11.3%								
6	7.2%								



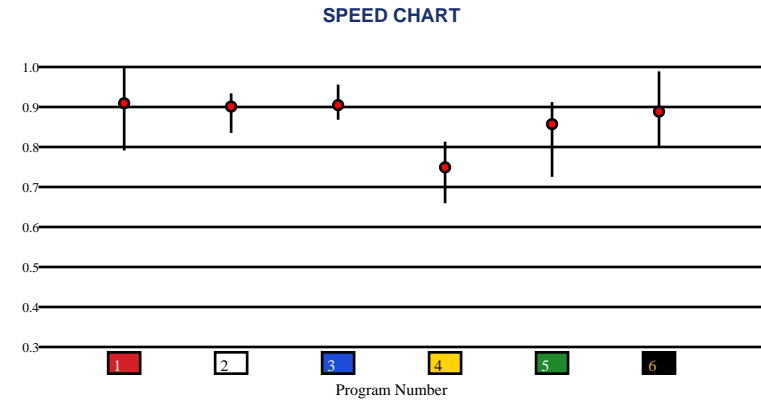


CHURCHILL DOWNS | 06/26/2026 | Race 3 | 1 1/16 Miles | Dirt | Allowance Optional Claiming | Purse: \$127,000

Speed # Edge (>=3)		SIM Odds		SIM Speed #		1st Call Leader		Early Pace		Late Pace		Total Pace	
1	6	1	8/5	1	82.8	1	38.9%	6	88.0	4	88.0	1	170.7
		2	3-1	2	82.2	6	31.4%	1	86.3	5	87.7	5	168.0
		3	5-1	3	82.2	3	22.8%	3	86.3	2	84.3	6	166.3
		5	8-1	6	78.3	5	5.8%	2	80.3	1	84.3	2	164.7
		6	13-1	5	76.8	2	1.1%	5	80.3	6	78.3	3	163.7
		4	124-1	4	72.8	4	0.0%	4	74.0	3	77.3	4	162.0

Pace / Improvement / Times																				
No.	Horse	ML Odds	SIM Odds	PAR	PAR+	Early	Mid	Late	1/4	1/2	Class Move	Move by Lengths	1st Timer (3 Max)	Bullet & Go	Back Bullet	2nd Race Parability	Jockey Win	Jockey ITM	Trainer Win	Trainer ITM
1	TAP TO OPEN	9/5	8/5	YES	35.6%	▲		▲			▲	0.6					0.53	0.69	1.00	1.00
2	ANSWERED PRAYERS	3-1	3-1	MAYBE -2	22.4%		▲				▼	-0.8					0.29	0.50	0.47	0.45
3	BE THE LIGHT	5/2	5-1	YES	14.9%						▼	-0.8					1.00	1.00	1.00	1.00
4	WINE PARTY	15-1	124-1	NO	0.0%	▲	▲	▲									0.17	0.17	0.46	0.70
5	LAKEN	5-1	8-1	MAYBE -4	12.3%		▲	▲		▲	▲	2.4					0.78	0.88	0.33	0.66
6	SOLEMN VOW	6-1	13-1	YES	8.4%					▲	▼	-2.0					0.63	0.70	0.77	0.81

No.	CZone %	E (CZ%)	EP (CZ%)	P (CZ%)	PC (CZ%)	C (CZ%)	ANY (CZ%)	N/A (CZ%)	1st
1	42.7%	1 (42.7%)		2 (19.8%)		4 (14.6%)			
2	19.8%			3 (16.3%)					
3	16.3%			5 (10.4%)					
4	14.6%			6 (11.2%)					
6	11.2%								
5	10.4%								



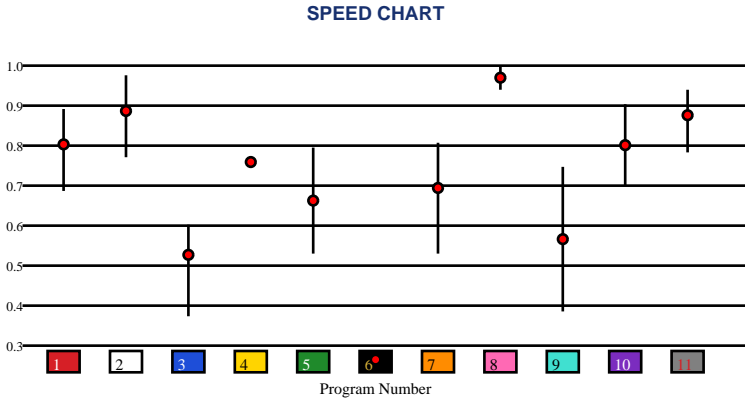


CHURCHILL DOWNS | 06/26/2026 | Race 4 | 6 Furlongs | Dirt | Maiden Claiming | Purse: \$35,000

Speed # Edge (>=3)	SIM Odds		SIM Speed #		1st Call Leader		Early Pace		Late Pace		Total Pace	
8	1/2	8	80.6 (+7)	1	51.0%	1	96.3	4	82.0	8	174.0 (+13)	
2	4-1	2	73.2	8	45.4%	8	96.0	8	78.0	4	161.0	
10	14-1	11	70.3	3	2.5%	3	88.3	2	75.7	2	159.3	
1	30-1	1	66.7	7	0.8%	2	83.7	7	73.0	1	157.7	
11	49-1	10	66.4	2	0.4%	10	82.0	10	69.0	7	152.3	
4	332-1	4	63.9	11	0.0%	11	81.0	11	67.0	10	151.0	

Pace / Improvement / Times																				
No.	Horse	ML Odds	SIM Odds	PAR	PAR+	Early	Mid	Late	1/4	1/2	Class Move	Move by Lengths	1st Timer (3 Max)	Bullet & Go	Back Bullet	2nd Race Parability	Jockey Win	Jockey ITM	Trainer Win	Trainer ITM
1	JACK CHARLES	4-1	30-1	MAYBE -3	14.2%						▼	-1.2					0.78	0.88	0.63	0.77
2	SAINT SHANCE	8-1	4-1	YES	35.5%		▲				▼	-1.2					0.32	0.66	0.36	0.68
3	BIG FUZZ	30-1	1001-1	NO	0.0%						▼	-0.2					0.23	0.47	0.42	0.54
4	WAITTILNEXTYEAR	15-1	332-1	NO	3.5%						▼	-1.6					0.30	0.41	0.11	0.41
5	CHIEF MORTER	6-1	999-1	NO	0.0%						▲	0.2					0.11	0.43	1.00	1.00
6	HAPPY I GOT IT	50-1	1001-1	NO	0.0%		▲				▲	0.2					0.35	0.17	0.47	0.66
7	CHATTERFIELD	20-1	1001-1	NO	0.0%			▲			▲	0.2					0.38	0.54	0.53	0.58
8	MCKINSENSE	7/2	1/2	YES	84.1%	▲	▲				▼	-2.4					0.28	0.50	0.21	0.59
9	TURN AND RUN	20-1	999-1	NO	0.0%	▲		▲	▲		▼	-1.4					0.18	0.50	0.28	0.66
10	VACATIONER	8-1	14-1	MAYBE -2	18.8%		▲			▲	▲	0.4					0.29	0.43	0.83	0.90
11	MUNICIPAL	5/2	49-1	YES	16.4%						▼	-2.0					1.00	1.00	0.33	0.48

No.	CZone %	E (CZ%)	EP (CZ%)	P (CZ%)	PC (CZ%)	C (CZ%)	ANY (CZ%)	N/A (CZ%)	1st
1	63.3%	1 (63.3%)		2 (15.1%)	8 (10.2%)	10 (16.8%)		3 (12.5%)	
9	22.2%	5 (0.0%)		11 (0.0%)				4 (0.0%)	
10	16.8%							6 (0.0%)	
2	15.1%							7 (9.9%)	
3	12.5%							9 (22.2%)	
8	10.2%								



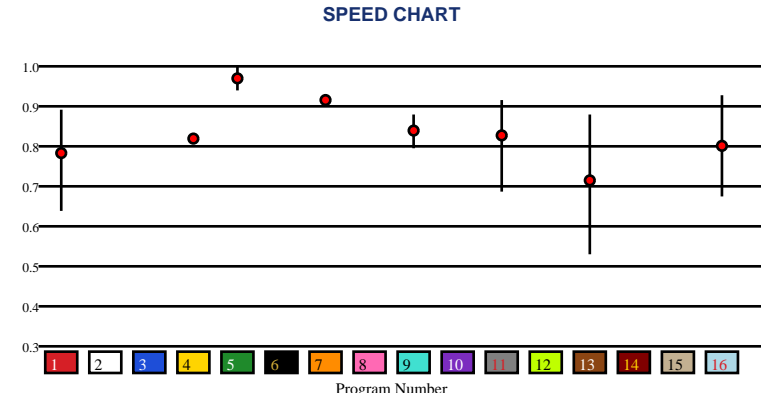


CHURCHILL DOWNS | 06/26/2026 | Race 5 | 5 Furlongs | Turf | Maiden Special Weight | Purse: \$120,000

Speed # Edge (>=3)	SIM Odds		SIM Speed #		1st Call Leader		Early Pace		Late Pace		Total Pace	
5	1-1	5	80.5 (+11)	1	33.7%	11	95.3	7	88.0 (+7)	7	168.0	
16	6-1	9	69.5	11	27.6%	1	94.0	5	81.0	11	163.7	
11	10-1	11	68.6	9	5.0%	9	93.3	4	79.0	5	160.0	
1	19-1	16	67.1	3	4.8%	16	89.0	11	68.3	1	156.0	
13	36-1	3	66.1	2	4.7%	13	81.7	13	63.0	4	156.0	
14	55-1	12	66.0	12	4.2%	7	80.0	9	62.0	9	155.3	

Pace / Improvement / Times																				
No.	Horse	ML Odds	SIM Odds	PAR	PAR+	Early	Mid	Late	1/4	1/2	Class Move	Move by Lengths	1st Timer (3 Max)	Bullet & Go	Back Bullet	2nd Race Parability	Jockey Win	Jockey ITM	Trainer Win	Trainer ITM
1	WADO WAVE	30-1	19-1	NO	2.1%	▲			▲		▲	1.6					0.38	1.00	0.44	0.47
2	FLIP FOR BLIP	15-1	58-1	NO	0.0%								2.93		✓		0.45	0.71	0.68	0.75
3	OFFICE	12-1	62-1	NO	0.0%								1.64		✓		0.54	0.78	0.31	0.78
4	BELLE AMOUR	8-1	70-1	NO	0.0%						▼	-0.8					0.47	0.67	0.48	0.67
5	LADY SYBIL	6-1	1-1	YES	35.3%	▲		▲	▲	▲	▲	0.2					0.36	0.61	0.54	0.64
6	READY COMETE	12-1	70-1	NO	0.0%								2.96	✓	✓		0.63	0.68	0.81	0.60
7	SPIN A TUNE	7/2	90-1	NO	0.0%						▲	0.8				89	0.78	0.86	0.41	0.65
8	WAITING FOR YOU	15-1	76-1	NO	0.0%								1.64		✓		0.46	0.55	0.32	0.64
9	GINGER ALE	12-1	1001-1	NO	0.0%			▲	▲		▲	1.2					0.29	0.42	0.52	0.20
10	HARD CHAMP	9/2	124-1	NO	0.0%								2.60		✓		1.00	0.98	0.67	0.79
11	R P BYRNE	5-1	10-1	NO	8.6%			▲			▲	1.4					0.49	0.25	1.00	1.00
12	FIRST OR LAST	15-1	82-1	NO	0.0%								1.64				0.53	0.67	0.52	0.30
13	RETROSPECTIVE (AE)	4-1	36-1	NO	1.7%						▲	0.2					0.09	0.44	0.59	0.68
14	LES (AE)	8-1	55-1	NO	0.0%								3.00				0.58	0.55	0.71	0.49
15	THAT'S A BENJAMIN (AE)	12-1	58-1	NO	0.0%								1.96		✓		0.63	0.68	0.17	0.39
16	SERENA'S SURPRISE (AE)	8-1	6-1	MAYBE -5	13.8%		▲			▲	▼	-0.8					0.18	0.49	0.09	0.81

No.	CZone %	E (CZ%)	EP (CZ%)	P (CZ%)	PC (CZ%)	C (CZ%)	ANY (CZ%)	N/A (CZ%)	1st
1	38.8%	1 (38.8%)				5 (15.2%)		4 (3.3%)	2
9	24.6%	13 (0.0%)				7 (5.2%)		9 (24.6%)	3
11	17.4%	16 (3.4%)				11 (17.4%)			6
5	15.2%								8
7	5.2%								10
16	3.4%								12
									14
									15



Program Number

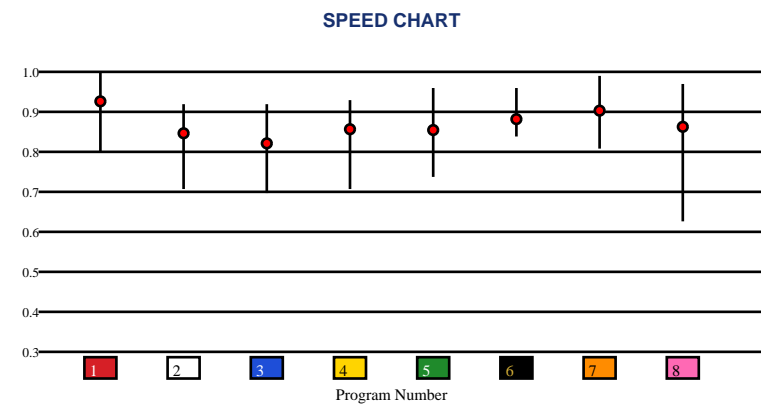


CHURCHILL DOWNS | 06/26/2026 | Race 6 | 6 1/2 Furlongs | Dirt | Claiming | Purse: \$89,000

Speed # Edge (>=3)		SIM Odds		SIM Speed #		1st Call Leader		Early Pace		Late Pace		Total Pace	
1	5	8	7/5	8	92.9	2	39.7%	2	94.3	1	94.3	8	180.3
		1	5/2	1	92.6	4	27.7%	4	94.0	7	92.7	2	177.0
		2	8-1	7	87.7	8	20.5%	8	91.7	6	92.3	1	174.0
		7	9-1	2	87.1	3	6.4%	3	88.0	8	88.7	7	172.3
		5	32-1	6	84.1	5	5.2%	5	87.0	2	82.7	6	172.3
		3	47-1	3	82.4	7	0.6%	6	80.0	3	76.7	4	165.7

Pace / Improvement / Times																				
No.	Horse	ML Odds	SIM Odds	PAR	PAR+	Early	Mid	Late	1/4	1/2	Class Move	Move by Lengths	1st Timer (3 Max)	Bullet & Go	Back Bullet	2nd Race Parability	Jockey Win	Jockey ITM	Trainer Win	Trainer ITM
1	THOUGHTTHATCOUNTS	7/5	5/2	YES	55.7%	▲	▲		▲	▲	▼	-0.8					0.54	0.80	0.76	0.78
2	NASTY HABIT	8-1	8-1	YES	33.6%						▼	-0.4					0.28	0.50	0.23	0.54
3	DR. SAIKALI	10-1	47-1	YES	15.1%					▲	▼	-0.8					0.29	0.35	0.21	0.19
4	AJAAYB	15-1	124-1	YES	0.0%			▲		▲	▼	-0.8					0.33	0.66	0.53	0.11
5	ATTACHE	9/2	32-1	YES	10.8%	▲	▲		▲	▲	▲	0.4					1.00	1.00	1.00	0.83
6	GOODASIWONSWAS	12-1	58-1	YES	13.1%	▲			▲	▲	▲	0.6					0.23	0.47	0.50	1.00
7	BEARINGS	8-1	9-1	YES	34.9%	▲	▲		▲		▼	-0.2					0.45	0.73	0.23	0.54
8	SHOW TIME	7/2	7/5	YES	55.3%		▲		▲	▲	▲	0.4					0.78	0.88	0.79	0.94

No.	CZone %	E (CZ%)	EP (CZ%)	P (CZ%)	PC (CZ%)	C (CZ%)	ANY (CZ%)	N/A (CZ%)	1st
1	71.1%		8 (67.2%)	4 (0.0%)		1 (71.1%)	2 (46.9%)		
8	67.2%					5 (32.9%)	3 (59.3%)		
6	66.4%					7 (11.7%)	6 (66.4%)		
3	59.3%								
2	46.9%								
5	32.9%								

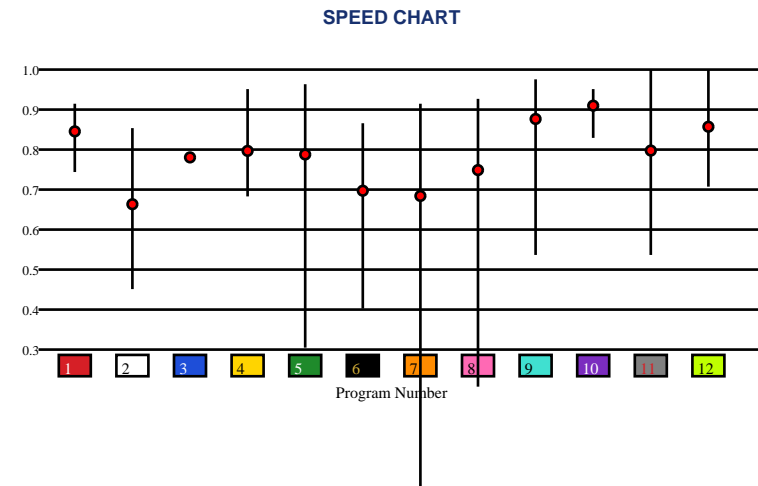


CHURCHILL DOWNS | 06/26/2026 | Race 7 | 6 1/2 Furlongs | Dirt | Claiming | Purse: \$62,000

Speed # Edge (>=3)	SIM Odds		SIM Speed #		1st Call Leader		Early Pace		Late Pace		Total Pace	
7	3-1	9	76.2	12	37.3%	12	90.7	7	87.7	10	166.3	
8	3-1	10	73.5	8	15.2%	10	87.0	9	83.7	7	164.7	
5	6-1	8	72.7	11	11.8%	4	86.7	1	81.7	8	163.3	
9	7-1	5	72.3	4	10.1%	2	85.0	10	79.3	9	163.0	
3	15-1	7	71.7	1	8.6%	8	84.7	8	78.7	5	160.7	
11	18-1	1	71.6	10	6.0%	11	84.3	5	78.0	1	160.0	

Pace / Improvement / Times																				
No.	Horse	ML Odds	SIM Odds	PAR	PAR+	Early	Mid	Late	1/4	1/2	Class Move	Move by Lengths	1st Timer (3 Max)	Bullet & Go	Back Bullet	2nd Race Parability	Jockey Win	Jockey ITM	Trainer Win	Trainer ITM
1	DIABLO SHIRAZ	8-1	82-1	MAYBE -5	7.6%						→	0.0					0.29	0.49	0.90	0.50
2	LEXI'S MELODY	30-1	28-1	NO	21.3%	▲	▲	▲	▲	▲	▲	1.4					0.23	0.46	0.29	0.67
3	GLEEFUL	15-1	15-1	NO	28.8%						▲	1.2					0.36	0.61	0.91	0.79
4	STEPHENS DREAM	20-1	82-1	MAYBE -2	10.7%					▲	▼	-1.2					0.26	0.38	0.43	0.57
5	CLOUD NUMBER NINE	12-1	6-1	MAYBE -1	38.5%			▲	▲	▲	▲	0.6					0.47	0.67	0.82	0.82
6	THEORETICALLY	30-1	1001-1	NO	0.0%			▲			▲	0.8					0.38	1.00	0.15	1.00
7	MAMARSHA	8-1	3-1	MAYBE -5	39.9%	▲	▲				▲	0.2					0.54	0.78	0.29	0.48
8	DIVINEINTERVENTION	10-1	3-1	MAYBE -4	41.7%			▲			▲	0.2					0.61	0.78	0.82	0.82
9	SCRIBBLE	4-1	7-1	YES	41.2%						▲	0.2					0.63	0.68	0.40	0.53
10	SASSY FOX	9/2	199-1	MAYBE -2	3.6%						▼	-1.2					0.18	0.49	0.38	0.75
11	STORM CLOUD RISING	20-1	18-1	YES	29.0%						▼	-1.6					0.11	0.42	0.58	0.48
12	NO TIME LEFT	5/2	49-1	YES	20.8%			▲			▼	-0.2					1.00	0.98	1.00	0.83

No.	CZone %	E (CZ%)	EP (CZ%)	P (CZ%)	PC (CZ%)	C (CZ%)	ANY (CZ%)	N/A (CZ%)	1st
11	19.5%	10 (16.3%)		4 (17.3%)		1 (9.1%)			
4	17.3%	11 (19.5%)		6 (0.2%)		2 (1.6%)			
12	16.6%			9 (8.6%)		3 (15.4%)			
10	16.3%					5 (12.0%)			
3	15.4%					7 (0.0%)			
5	12.0%					8 (0.6%)			
						12 (16.6%)			



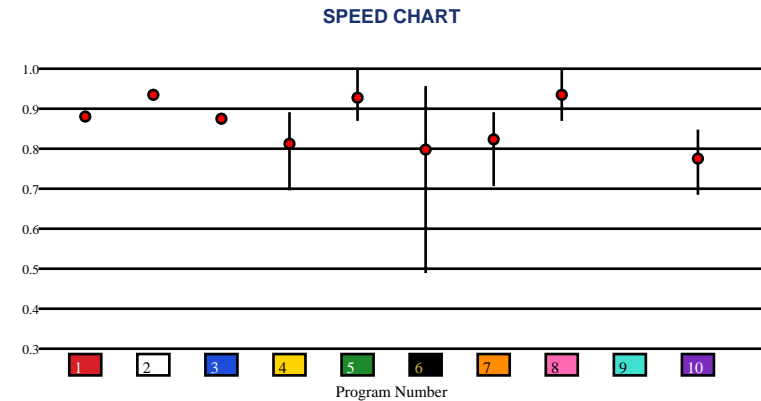


CHURCHILL DOWNS | 06/26/2026 | Race 8 | 1 1/16 Miles | Dirt | Maiden Special Weight | Purse: \$120,000

Speed # Edge (>=3)	SIM Odds		SIM Speed #		1st Call Leader		Early Pace		Late Pace		Total Pace	
6	8/5	8	86.2	8	57.5%	8	91.0	2	91.0	8	177.0	
8	5/2	5	85.5	5	21.3%	5	89.0	3	88.0	5	176.3	
5	4-1	6	82.2	7	11.4%	7	87.0	5	87.3	2	172.0	
2	24-1	3	80.5	6	7.2%	6	83.0	8	86.0	3	169.0	
1	26-1	2	77.6	9	2.3%	9	82.0	6	85.0	1	167.0	
9	28-1	9	77.4	1	0.4%	1	81.7	1	84.0	6	166.7	

Pace / Improvement / Times																				
No.	Horse	ML Odds	SIM Odds	PAR	PAR+	Early	Mid	Late	1/4	1/2	Class Move	Move by Lengths	1st Timer (3 Max)	Bullet & Go	Back Bullet	2nd Race Parability	Jockey Win	Jockey ITM	Trainer Win	Trainer ITM
1	CURLIN'S CHARM	6-1	26-1	MAYBE -4	20.7%						▼	-0.2				94	0.32	0.66	0.36	0.68
2	WEDELIA	3-1	24-1	YES	22.6%						▲	0.2				99	1.00	1.00	1.00	0.98
3	SHE'S OUR GIRL	15-1	199-1	MAYBE -4	0.0%						▲	0.2					0.45	0.73	0.33	0.43
4	CHARTED DESTINY	30-1	62-1	MAYBE -3	10.2%		▲		▲		▲	0.2					0.47	0.63	0.52	1.00
5	FAST GUN	5/2	4-1	YES	53.3%	▲		▲			▲	0.2					0.78	0.88	0.55	0.71
6	EPISIST	20-1	8/5	YES	45.8%			▲	▲		▲	0.2					0.47	0.68	0.55	0.71
7	FLASH OF FREEDOM	15-1	70-1	MAYBE -3	8.8%			▲			▲	0.2					0.54	0.80	0.50	0.75
8	BODACIOUS BAY	4-1	5/2	YES	55.6%			▲			▲	0.2					0.46	0.56	0.79	0.84
9	HAVANA RUM	15-1	28-1	NO	22.4%								1.33				0.30	0.41	0.13	0.44
10	BOURBON STORY	8-1	332-1	NO	0.0%			▲			▲	0.8					0.28	0.67	0.33	0.57

No.	CZone %	E (CZ%)	EP (CZ%)	P (CZ%)	PC (CZ%)	C (CZ%)	ANY (CZ%)	N/A (CZ%)	1st
7	23.4%	7 (23.4%)			8 (0.1%)	1 (0.0%)		2 (0.0%)	9
5	17.1%					5 (17.1%)		3 (0.0%)	
6	16.1%					6 (16.1%)		4 (11.1%)	
4	11.1%					10 (0.0%)			
8	0.1%								
1	0.0%								



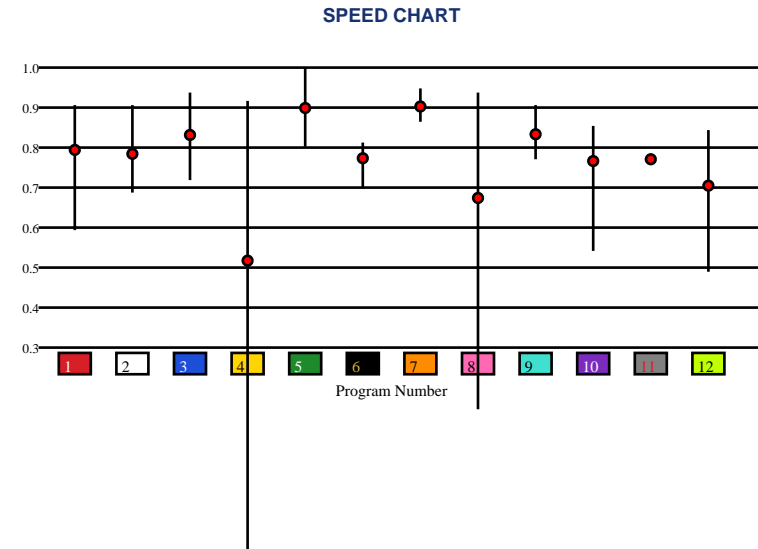


CHURCHILL DOWNS | 06/26/2026 | Race 9 | 1 Mile | Turf | Allowance | Purse: \$127,000

Speed # Edge (>=3)		SIM Odds		SIM Speed #		1st Call Leader		Early Pace		Late Pace		Total Pace	
3	4	8	5/2	7	86.5	4	41.6%	4	93.7 (+8)	7	96.7 (+9)	7	179.7
		4	3-1	1	82.8	12	23.7%	6	86.0	11	88.0	4	175.2
		1	5-1	5	82.7	8	14.5%	12	85.7	9	87.7	11	169.0
		3	9-1	3	82.4	7	7.4%	8	85.3	5	87.0	10	168.7
		7	11-1	2	78.4	6	5.6%	1	85.3	10	84.3	6	167.3
		5	21-1	9	78.4	10	5.4%	3	85.3	2	83.3	1	163.3

Pace / Improvement / Times																				
No.	Horse	ML Odds	SIM Odds	PAR	PAR+	Early	Mid	Late	1/4	1/2	Class Move	Move by Lengths	1st Timer (3 Max)	Bullet & Go	Back Bullet	2nd Race Parability	Jockey Win	Jockey ITM	Trainer Win	Trainer ITM
1	HIGH SOUTH	12-1	5-1	YES	47.7%	▲	▲		▲	▲	▼	-0.2					0.46	0.56	0.36	0.69
2	MCKINZIE'S GLORY	30-1	99-1	YES	25.6%		▲				▲	0.4					0.28	0.67	0.29	0.50
3	MECHAYA	6-1	9-1	YES	43.2%		▲		▲	▲	▼	-0.6					0.47	0.63	0.47	0.78
4	OSCAR'S ENCORE	8-1	3-1	YES	32.9%	▲					▼	-0.4					0.78	0.88	0.75	0.85
5	TOTALLY JUSTIFIED	6-1	21-1	YES	45.5%			▲			▼	-0.2					0.45	0.73	0.21	0.46
6	CONCEIT	3-1	999-1	NO	8.8%	▲	▲	▲			▼	-0.6					1.00	1.00	1.00	1.00
7	LEINANI	9/2	11-1	YES	69.6%			▲			▼	-0.6					0.54	0.80	0.69	0.79
8	TETIAROA	15-1	5/2	YES	43.7%			▲			▼	-1.2					0.69	0.67	0.17	0.61
9	ANNELLE	10-1	499-1	YES	13.3%	▲	▲		▲	▲	▼	-0.4					0.30	0.41	0.33	0.66
10	VIVA VIENNE	20-1	25-1	MAYBE -2	31.3%			▲			▼	-0.6					0.29	0.43	0.71	0.78
11	NOSHAMETOHERGAME	8-1	1001-1	NO	0.0%			▲			▲	0.2					0.63	0.70	0.71	0.83
12	TESOURO DE PIRATA	30-1	25-1	MAYBE -3	22.6%			▲			▲	1.0					0.54	0.69	0.52	0.47

No.	CZone %	E (CZ%)	EP (CZ%)	P (CZ%)	PC (CZ%)	C (CZ%)	ANY (CZ%)	N/A (CZ%)	1st
12	30.0%	3 (1.8%)		1 (18.3%)	9 (28.4%)	2 (20.0%)			
9	28.4%	10 (11.3%)		4 (16.3%)					
2	20.0%	12 (30.0%)		5 (8.2%)					
1	18.3%			6 (17.3%)					
6	17.3%			7 (12.1%)					
4	16.3%			8 (10.0%)					
				11 (4.7%)					



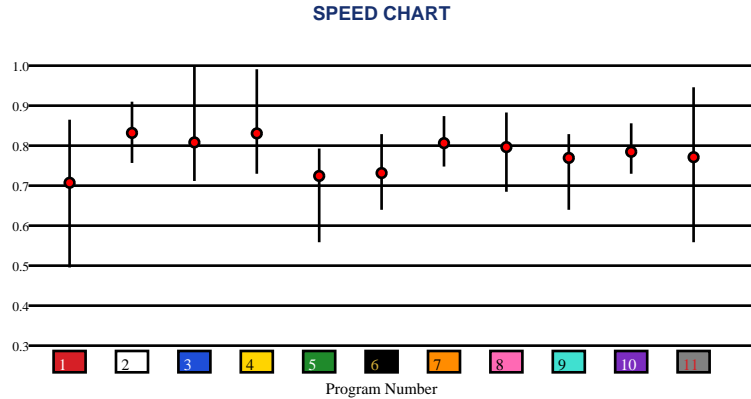


CHURCHILL DOWNS | 06/26/2026 | Race 10 | 1 1/8 Miles | Dirt | Allowance Optional Claiming | Purse: \$134,000

Speed # Edge (>=3)	SIM Odds		SIM Speed #		1st Call Leader		Early Pace		Late Pace		Total Pace	
3	2-1	3	99.2	1	32.5%	1	88.7	3	104.3	2	179.7	
4	5/2	4	98.5	6	30.0%	6	87.0	4	102.3	1	177.3	
2	5-1	2	96.9	2	21.8%	2	86.7	5	94.0	3	172.3	
1	9-1	8	93.5	10	8.4%	10	84.7	2	93.0	6	172.0	
8	15-1	7	88.8	8	4.4%	8	83.0	7	91.7	4	171.7	
11	58-1	6	87.7	11	2.4%	11	80.0	1	88.7	8	171.3	

Pace / Improvement / Times																				
No.	Horse	ML Odds	SIM Odds	PAR	PAR+	Early	Mid	Late	1/4	1/2	Class Move	Move by Lengths	1st Timer (3 Max)	Bullet & Go	Back Bullet	2nd Race Parability	Jockey Win	Jockey ITM	Trainer Win	Trainer ITM
1	MASTER CONTROLLER	12-1	9-1	YES	38.9%	▲	▲	▲			▼	-0.6					0.29	0.70	0.32	0.62
2	EXTENSIVE	6-1	5-1	YES	70.7%						▼	-0.4					0.30	0.41	1.00	0.83
3	INTERCEPTOR	5/2	2-1	YES	72.0%	▲	▲	▲	▲	▲	▼	-1.4					0.63	0.70	0.60	0.74
4	STOWAWAY	7/2	5/2	YES	73.8%	▲	▲	▲	▲	▲	▼	-1.4					0.78	0.88	0.39	0.82
5	ARISTOTLE	10-1	70-1	MAYBE -4	33.3%						→	0.0					0.32	0.66	0.35	0.55
6	CRISIS MANAGER	8-1	66-1	YES	39.3%	▲	▲	▲	▲	▲	▲	1.0					1.00	1.00	0.57	1.00
7	BADDEST GOOD BOY	12-1	142-1	YES	29.7%	▲	▲		▲	▲	→	0.0					0.47	0.63	0.86	0.76
8	CLOONEY	10-1	15-1	YES	57.7%	▲	▲	▲	▲		▲	0.4					0.09	0.45	0.74	0.72
9	DANCE SOME MO	15-1	1001-1	YES	6.9%						▲	0.2					0.54	0.80	0.89	0.52
10	PRINCE OF POWER	20-1	1001-1	YES	15.1%						▼	-0.6					0.11	0.43	0.63	0.41
11	AMERICAN PROMISE	20-1	58-1	YES	26.0%	▲		▲	▲		▼	-1.0					0.47	0.68	0.61	0.71

No.	CZone %	E (CZ%)	EP (CZ%)	P (CZ%)	PC (CZ%)	C (CZ%)	ANY (CZ%)	N/A (CZ%)	1st
1	86.4%	6 (38.3%)	3 (0.2%)		2 (22.0%)	4 (10.1%)	1 (86.4%)		
8	85.9%	10 (15.9%)				5 (8.9%)	7 (73.6%)		
7	73.6%	11 (2.4%)				9 (45.2%)	8 (85.9%)		
9	45.2%								
6	38.3%								
2	22.0%								



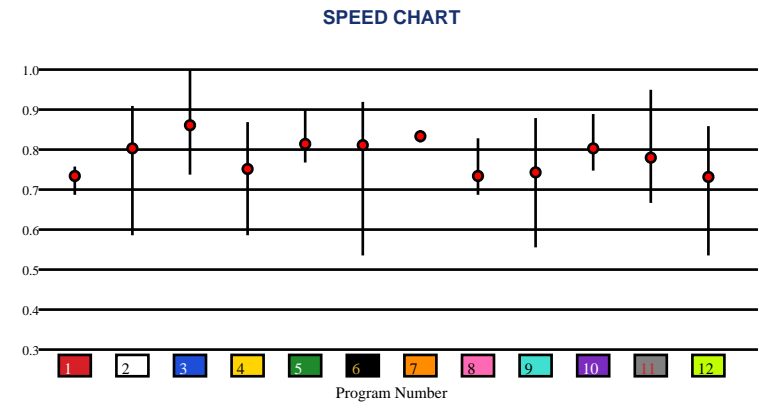


CHURCHILL DOWNS | 06/26/2026 | Race 11 | 1 1/16 Miles | Dirt | Starter Allowance | Purse: \$83,000

Speed # Edge (>=3)		SIM Odds		SIM Speed #		1st Call Leader		Early Pace		Late Pace		Total Pace	
6	4	6	2-1	6	87.9	11	73.3%	11	96.7 (+11)	3	99.7	7	176.5
		9	4-1	3	86.4	4	9.7%	4	86.0	6	95.3	3	173.7
		3	6-1	9	84.6	9	7.3%	12	83.3	7	94.0	6	170.3
		4	6-1	7	82.5	1	4.7%	9	83.0	9	86.0	4	169.7
		12	6-1	4	82.1	12	1.7%	7	82.5	4	83.7	9	169.0
		2	58-1	12	81.5	7	1.7%	8	81.7	10	81.0	12	164.0

Pace / Improvement / Times																				
No.	Horse	ML Odds	SIM Odds	PAR	PAR+	Early	Mid	Late	1/4	1/2	Class Move	Move by Lengths	1st Timer (3 Max)	Bullet & Go	Back Bullet	2nd Race Parability	Jockey Win	Jockey ITM	Trainer Win	Trainer ITM
1	BIRD THE LEGEND	20-1	1001-1	NO	0.0%	▲	▲		▲		▲	0.8					0.46	0.56	0.88	0.78
2	BAYTOWN BRUISER	15-1	58-1	YES	7.6%			▲			▲	0.2					0.53	0.69	0.43	0.46
3	FUNNY UNCLE	7/2	6-1	YES	41.0%	▲	▲		▲	▲	▼	-0.6					1.00	1.00	0.84	0.77
4	MAKUTU	12-1	6-1	MAYBE -3	33.1%		▲	▲		▲	▲	0.6					0.28	0.50	0.30	0.43
5	GLOBAL QUOTE	20-1	166-1	YES	0.0%	▲	▲				▲	0.2					0.33	0.66	0.86	0.85
6	FEAR OF UNION	3-1	2-1	YES	47.9%			▲			▼	-1.2					0.54	0.80	0.92	0.85
7	SUPER MCKINZIE	9/2	199-1	MAYBE -5	0.0%						▲	2.8					0.78	0.88	0.77	0.77
8	MAGICSTRIKESAGAIN	30-1	1001-1	NO	0.0%			▲		▲	▲	1.0					0.29	0.50	0.71	0.80
9	SPIRIT OF A WALKON	8-1	4-1	MAYBE -2	40.2%	▲	▲		▲	▲	→	0.0					0.10	0.62	0.42	0.90
10	SOUND CAUSE	15-1	332-1	MAYBE -1	0.0%	▲	▲	▲	▲	▲	▲	0.2					0.47	0.68	0.61	0.66
11	LEGITIMATE	8-1	99-1	YES	3.2%		▲				→	0.0					0.36	0.62	0.84	1.00
12	CONSOLIDATED	12-1	6-1	MAYBE -4	33.0%			▲	▲	▲	▲	0.2					0.29	0.43	1.00	0.88

No.	CZone %	E (CZ%)	EP (CZ%)	P (CZ%)	PC (CZ%)	C (CZ%)	ANY (CZ%)	N/A (CZ%)	1st
11	81.4%	4 (13.7%)	2 (7.7%)	12 (12.4%)	6 (74.2%)	1 (0.0%)		7 (6.8%)	
6	74.2%	11 (81.4%)	9 (11.5%)			3 (7.8%)			
8	19.5%					5 (14.4%)			
10	14.6%					8 (19.5%)			
5	14.4%					10 (14.6%)			
4	13.7%								



SMART SHEETS

[Back to Race Summary](#)

Data Guide & Structural Interpretation Framework

DATA FOUNDATION

All Smart Sheets metrics are derived from up to the horse's 10 most recent races, where applicable. Calculations are structured to emphasize recent form, reflect demonstrated performance patterns, and reduce distortion from outdated efforts.

More recent races carry greater interpretive weight within projections and structural evaluations. This ensures current condition and form cycles are prioritized over distant historical performance.

PERFORMANCE STANDARD

PAR (Race Standard)

PAR indicates whether a horse has previously run a speed figure equal to or greater than today's race standard.

Designations include:

'YES' – Has met or exceeded today's PAR

'MAYBE' -1 to -5 – Finished within 1 to 5 speed points of today's PAR

'NO' – Has not approached today's PAR level

The MAYBE designation identifies horses that have demonstrated competitive proximity without fully qualifying.

PAR+

PAR+ represents the percentage of simulations in which the horse meets or exceeds today's PAR standard. Higher percentages indicate more frequent projected competitiveness at today's performance level. PAR+ reflects projected probability rather than past qualification alone.

Performance Context

Approximately 5 Speed or Pace points equate to 1 length. This conversion provides scale when interpreting speed separation, PAR proximity, pace advantage, and structural positioning. Small numeric gaps may represent marginal positional differences, while larger separations may reflect more meaningful competitive distance.

SPEED & VALUE STRUCTURE

Speed # Edge (Minimum Threshold: 3 Points)

Speed # Edge highlights meaningful separation between projected top speed figures. An edge is recognized only when a horse holds a minimum 3-point advantage over the next highest projected figure.

Using the structural scale:

3 points ≈ slightly more than half a length

5 points ≈ approximately 1 length

This threshold filters out normal figure variance and isolates measurable separation.

SIM Odds

SIM Odds represent fair-value odds derived from simulation probability. They reflect the model's internal estimate of each horse's likelihood of winning relative to the field.

When compared to Morning Line or live wagering odds, differences between projected probability and market pricing may help identify potential mispricing or value discrepancies.

Smart Sheets does not make wagering recommendations. SIM Odds provide a structured framework for evaluating probability versus price.

SIM Speed

SIM Speed is a projected performance figure generated from race simulations. It estimates how fast the horse is expected to run today under modeled pace and race-flow conditions. The number is most useful when evaluated relative to the field rather than in isolation.

Speed Chart

The Speed Chart visually displays each horse's recent speed range:

'**Top**' of line – Maximum figure

'**Bottom**' of line – Minimum figure

'**Red Dot**' – Average figure

This allows evaluation of ceiling, floor, consistency, and volatility.

PACE PROJECTIONS

1st Call Leader Projection

This metric estimates the likelihood a horse will be on the lead at the first call. It helps define projected early race structure and potential pace pressure.

Early & Late Pace

These columns reflect performance strength in the front half and finishing phase of the race. Evaluating these collectively helps visualize projected race flow and potential positional advantages.

Total Pace

Total Pace represents combined early and late performance strength. Separation within this column may indicate in-race structural advantage when evaluated relative to the field.

POSITIONAL PROFILE

C-Zone (Comfort Zone)

C-Zone measures how closely today's projected race conditions align with the pace environment under which the horse produced its best competitive finish. It evaluates race fit rather than raw speed. Higher percentages indicate stronger alignment between projected structure and demonstrated success conditions.

Pace View

Pace View categorizes horses based on positional tendencies during competitive finishes.

'E' – Front-runner

'EP' – Lead or press

'P' – Tactical stalker

'PC' – Versatile stalker/closer

'C' – Closer

'ANY' – Demonstrated multiple effective styles

'N/A' – No competitive finish within 5 lengths

'1st' – First-time starter

The percentage displayed next to each horse represents its C-Zone score, combining positional tendency with projected structural fit.

DEVELOPMENT & MOVEMENT SIGNALS

Class Move

Indicates whether a horse is moving up in class, moving down in class, or remaining at a similar level. Class shifts may influence competitive positioning within today's race structure.

First-Time Starter Rank

Ranks debut runners using internal evaluation metrics for comparison within the field. The maximum First-Time Starter score is 3, representing the strongest relative rating among debut runners in the race.

Workout Indicators

Bullet / Bullet & Go indicators reflect strong recent workouts relative to the field and may signal preparation sharpness.

2nd Race Parability

Applies to lightly raced horses making their second start. Indicates whether projected development meets or exceeds today's PAR standard.

This metric may carry increased relevance when few or no horses have previously met today's PAR threshold.

CONNECTION STRENGTH

Jockey and Trainer ratings are scaled within the field and color-coded to reflect relative strength.

COLOR FORMATTING & STRUCTURAL EDGE IDENTIFICATION

Smart Sheets uses color formatting and structured layout to visually identify potential structural advantages, including meaningful speed separation, PAR qualification or proximity, projected pace leadership, connection strength, and simulation pricing disparities.

Interpretation of how these elements interact remains the responsibility of the user.

DISCLAIMER

Smart Sheets data is compiled using information derived from reputable industry sources and publicly available racing data. All data is used in good faith and presented for informational and educational purposes. While every effort is made to ensure accuracy and completeness, errors, omissions, or data inconsistencies may occur and are unintended.

Smart Sheets is a decision-support tool and does not guarantee outcomes.

RESPONSIBLE WAGERING NOTICE

Horse racing wagering involves financial risk. Users should never wager more than they can afford to lose. If you cannot afford to lose anything, you should not gamble.

If you believe you may have a gambling problem, seek assistance immediately through a licensed professional or recognized responsible gaming organization.

All wagering decisions are solely the responsibility of the user.