



**See the Edge in Every Race**  
**CHURCHILL DOWNS 06/27/2026**

How to Use Smart Sheets → <https://horseracingtoday.net/wp-content/uploads/2026/03/HRTSmartSheetsExplanations.pdf>

Race	Distance	Surface	Race Type	Purse
<a href="#">Race 1</a>	6 Furlongs	Dirt	Maiden Special Weight	\$120,000
<a href="#">Race 2</a>	1 1/16 Miles	Dirt	Maiden Special Weight	\$120,000
<a href="#">Race 3</a>	6 1/2 Furlongs	Dirt	Maiden Special Weight	\$120,000
<a href="#">Race 4</a>	1 1/16 Miles	Dirt	Allowance Optional Claiming	\$127,000
<a href="#">Race 5</a>	1 1/8 Miles	Turf	AnchorageL275k	\$275,000
<a href="#">Race 6</a>	7 Furlongs	Dirt	Allowance Optional Claiming	\$134,000
<a href="#">Race 7</a>	1 1/8 Miles	Dirt	FlrDLis-G2	\$500,000
<a href="#">Race 8</a>	1 1/16 Miles	Turf	AmercnDbyL275k	\$275,000
<a href="#">Race 9</a>	6 1/2 Furlongs	Dirt	Bango-G3	\$275,000
<a href="#">Race 10</a>	1 1/16 Miles	Turf	WiseDan-G2	\$500,000
<a href="#">Race 11</a>	1 1/8 Miles	Dirt	SFoster-G1	\$2,000,000
<a href="#">Race 12</a>	1 Mile	Turf	TepinL275k	\$275,000
<a href="#">Appendix</a>			Smart Sheets Reference Guide	

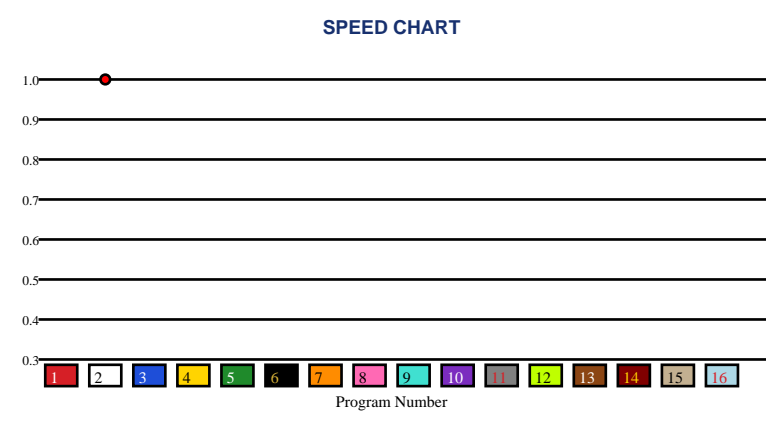


**CHURCHILL DOWNS | 06/27/2026 | Race 1 | 6 Furlongs | Dirt | Maiden Special Weight | Purse: \$120,000**

Speed # Edge (>=3)		SIM Odds		SIM Speed #		1st Call Leader		Early Pace		Late Pace		Total Pace	
2	10067	13	13-1	3	70.4	2	100.0%	2	93.0	2	66.0	2	159.0
		1	13-1	9	70.2	11	0.0%	11		11		11	
		6	14-1	1	70.1	13	0.0%	13		13		13	
		2	14-1	4	70.1	1	0.0%	1		1		1	
		16	14-1	10	70.1	16	0.0%	16		16		16	
		11	14-1	8	70.1	6	0.0%	6		6		6	

Pace / Improvement / Times																				
No.	Horse	ML Odds	SIM Odds	PAR	PAR+	Early	Mid	Late	1/4	1/2	Class Move	Move by Lengths	1st Timer (3 Max)	Bullet & Go	Back Bullet	2nd Race Parability	Jockey Win	Jockey ITM	Trainer Win	Trainer ITM
1	MOTIVATED MENSCH	12-1	13-1	NO	8.3%								2.88		✓		0.28	0.53	0.53	0.79
2	BET ON SILVER	20-1	14-1	NO	6.7%						→	0.0					0.45	0.73	0.59	0.67
3	SALAHUDIN	6-1	17-1	NO	6.4%								2.99				0.63	0.85	1.00	0.83
4	TWINKLE TOWN	15-1	15-1	NO	6.8%								2.96	✓	✓		0.53	0.69	0.75	0.83
5	ANTIVENOM	5-1	16-1	NO	6.8%								2.00	✓	✓		0.56	0.72	0.37	0.57
6	BOURBON BYTE	20-1	14-1	NO	7.9%								2.28				0.46	0.56	0.81	0.79
7	ARMINIUS	8-1	16-1	NO	5.5%								3.00				0.54	0.80	0.59	0.67
8	MERIT BADGE	30-1	17-1	NO	6.0%								1.95		✓		0.47	0.63	0.24	0.47
9	CARIBBEAN WARRIOR	12-1	15-1	NO	6.3%								2.66				1.00	1.00	0.86	0.86
10	CONROY	20-1	19-1	NO	6.1%								1.30				0.36	0.62	0.42	0.70
11	POWERLINE	8/5	14-1	NO	6.4%								2.96		✓		0.78	0.88	0.63	0.73
12	CELTIC MO	10-1	15-1	NO	7.0%								2.98		✓		0.63	0.70	0.81	0.84
13	CHARLIE'S CLOCK (AE)	15-1	13-1	NO	6.2%								1.61				0.28	0.50	0.25	0.49
14	AUTHENTIC GOLD (AE)	20-1	16-1	NO	7.0%								2.63				0.58	0.56	0.91	0.53
15	EIGHT HUNDRED (AE)	30-1	16-1	NO	4.7%								1.63				0.11	0.42	0.61	0.72
16	CACTUS CLOSER (AE)	10-1	14-1	NO	6.4%								1.67				0.38	0.74	0.43	1.00

No.	CZone %	E (CZ%)	EP (CZ%)	P (CZ%)	PC (CZ%)	C (CZ%)	ANY (CZ%)	N/A (CZ%)	1st
1	0.0%							2 (0.0%)	1
2	0.0%								3
3	0.0%								4
4	0.0%								5
5	0.0%								6
6	0.0%								7
									8
									9
									10
									11
									12
									13
									14
									15
									16



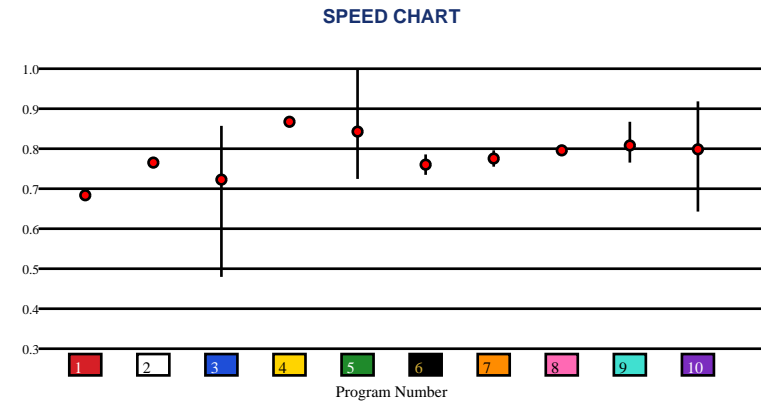


# CHURCHILL DOWNS | 06/27/2026 | Race 2 | 1 1/16 Miles | Dirt | Maiden Special Weight | Purse: \$120,000

Speed # Edge (>=3)		SIM Odds		SIM Speed #		1st Call Leader		Early Pace		Late Pace		Total Pace	
5	8	5	1-1	5	89.1 (+9)	10	34.1%	10	90.7	5	99.3 (+8)	5	184.7 (+12)
		3	6-1	2	80.4	8	29.6%	8	90.0	4	91.0	4	173.0
		10	6-1	4	80.0	6	24.8%	6	89.5	7	87.0	8	171.0
		8	12-1	8	80.0	5	8.1%	5	85.3	2	84.0	6	169.5
		2	13-1	9	79.0	4	1.0%	4	82.0	8	81.0	7	169.0
		4	15-1	10	78.2	7	1.0%	7	82.0	1	80.5	2	164.0

Pace / Improvement / Times																				
No.	Horse	ML Odds	SIM Odds	PAR	PAR+	Early	Mid	Late	1/4	1/2	Class Move	Move by Lengths	1st Timer (3 Max)	Bullet & Go	Back Bullet	2nd Race Parability	Jockey Win	Jockey ITM	Trainer Win	Trainer ITM
1	EL TIO	30-1	1001-1	NO	0.0%		▲		▲	▲	▲	2.4					0.29	0.50	0.87	0.92
2	DELANCEY STREET	20-1	13-1	NO	4.0%						▲	0.2					0.54	0.80	0.19	0.42
3	NOMOLIMBO	30-1	6-1	NO	17.6%		▲			▲	→	0.0					0.56	0.72	0.36	0.48
4	PRESIDE	7/2	15-1	NO	3.1%						▲	0.2				98	0.78	0.88	0.55	0.72
5	DIRECT STRIKE	7/5	1-1	YES	46.3%	▲	▲	▲	▲	▲	→	0.0					1.00	1.00	1.00	1.00
6	YOUR WILDEST DREAM	15-1	1001-1	NO	0.0%	▲	▲		▲	▲	▲	0.8					0.63	0.70	0.19	0.42
7	CIVIC CHARM	8-1	999-1	NO	0.0%			▲		▲	▲	0.2					0.32	0.31	0.47	0.45
8	SASSMASTER	6-1	12-1	NO	2.5%						▲	0.8				91	0.63	0.85	0.49	0.57
9	MONEY MAN	20-1	70-1	NO	0.0%	▲	▲	▲	▲	▲	→	0.0					0.46	0.56	0.49	0.29
10	OUR FOREFATHERS	6-1	6-1	MAYBE -1	17.6%	▲	▲		▲	▲	→	0.0					0.45	0.73	0.33	0.44

No.	CZone %	E (CZ%)	EP (CZ%)	P (CZ%)	PC (CZ%)	C (CZ%)	ANY (CZ%)	N/A (CZ%)	1st
9	57.5%	10 (46.6%)	5 (38.3%)			3 (0.0%)		1 (13.1%)	
10	46.6%					6 (12.7%)		2 (0.0%)	
5	38.3%					7 (19.1%)		4 (0.0%)	
7	19.1%					9 (57.5%)		8 (18.2%)	
8	18.2%								
1	13.1%								





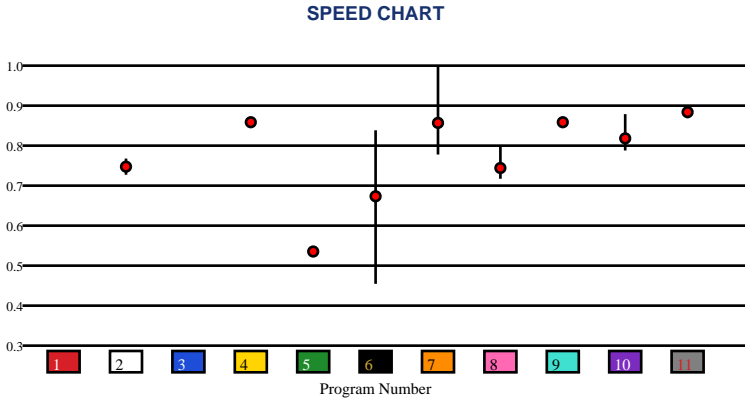
# CHURCHILL DOWNS | 06/27/2026 | Race 3 | 6 1/2 Furlongs | Dirt | Maiden Special Weight | Purse: \$120,000

Speed # Edge (>=3)	SIM Odds		SIM Speed #		1st Call Leader		Early Pace		Late Pace		Total Pace	
7	1-1	7	89.5	10	36.1%	4	94.0	7	86.0	4	176.0	
11	2-1	11	87.5	4	30.7%	10	94.0	11	83.5	9	175.0	
6	37-1	10	81.3	9	21.0%	9	93.0	9	82.0	11	174.0	
10	47-1	3	76.0	11	7.2%	11	90.5	4	82.0	7	172.0	
9	90-1	9	75.8	7	4.3%	7	86.0	8	77.0	10	167.3	
4	99-1	4	75.8	1	0.4%	8	85.7	10	73.3	8	162.7	

Pace / Improvement / Times																				
No.	Horse	ML Odds	SIM Odds	PAR	PAR+	Early	Mid	Late	1/4	1/2	Class Move	Move by Lengths	1st Timer (3 Max)	Bullet & Go	Back Bullet	2nd Race Parability	Jockey Win	Jockey ITM	Trainer Win	Trainer ITM
1	ROSCOE'S BROTHER	15-1	110-1	NO	0.0%								2.99		✓		0.58	0.82	1.00	0.99
2	CIERTO	20-1	1001-1	NO	0.0%	▲	▲		▲		▼	-0.2					0.89	0.76	0.57	0.65
3	TURCOTTE	15-1	124-1	NO	0.0%								2.67		✓		0.69	0.90	0.90	0.93
4	PURSUIT OF FREEDOM	8-1	99-1	MAYBE -5	0.0%						▼	-0.6				98	0.39	0.46	0.37	0.43
5	FLASHY RICH DEAL	30-1	999-1	NO	0.0%						▲	0.2					0.41	0.74	0.19	0.67
6	BRIDGESONG	12-1	37-1	NO	0.9%	▲		▲	▲	▲	▲	0.6					0.30	0.54	0.19	0.60
7	MARKET RUNNER	6-1	1-1	YES	49.7%	▲	▲			▲	▼	-0.2					0.42	0.36	0.57	1.00
8	EQUATOR	30-1	1001-1	NO	0.0%		▲	▲			▲	1.0					0.30	0.38	0.51	0.68
9	CAMPOBASSO	3-1	90-1	MAYBE -5	0.0%						→	0.0				98	0.81	0.97	0.97	0.81
10	TAGERMEEN	5/2	47-1	MAYBE -3	0.0%	▲	▲				▲	1.2					1.00	1.00	0.61	0.71
11	BIG JAKE	9/2	2-1	MAYBE -1	8.1%	▲	▲		▲	▲	→	0.0					0.68	0.78	0.97	0.81

No.	CZone %
6	51.9%
4	48.8%
10	38.2%
9	20.9%
7	17.8%
11	13.1%

E (CZ%)	EP (CZ%)	P (CZ%)	PC (CZ%)	C (CZ%)	ANY (CZ%)	N/A (CZ%)	1st
		7 (17.8%)		6 (51.9%)		2 (1.5%)	1
		9 (20.9%)		8 (0.0%)		4 (48.8%)	3
		10 (38.2%)				5 (0.0%)	
						11 (13.1%)	



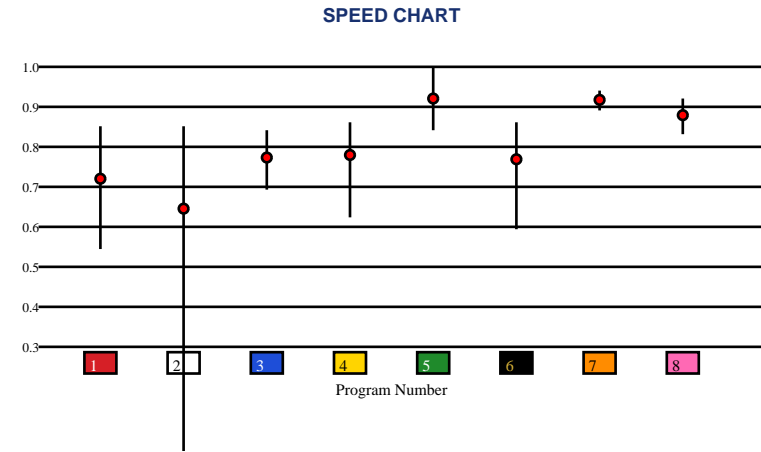


**CHURCHILL DOWNS | 06/27/2026 | Race 4 | 1 1/16 Miles | Dirt | Allowance Optional Claiming | Purse: \$127,000**

Speed # Edge (>=3)		SIM Odds		SIM Speed #		1st Call Leader		Early Pace		Late Pace		Total Pace	
5	6	5	9/5	5	93.2	3	37.5%	3	91.7	5	97.0 (+6)	5	185.0 (+7)
		6	9/2	7	92.6	2	19.2%	2	90.0	7	91.3	7	178.0
		7	5-1	8	87.3	7	13.9%	1	90.0	6	87.3	8	170.3
		2	6-1	6	85.8	5	13.4%	5	88.0	8	85.3	2	168.5
		1	9-1	3	79.9	1	9.1%	7	86.7	2	78.5	6	168.3
		8	27-1	1	79.1	6	4.7%	8	85.0	1	73.3	3	163.3

Pace / Improvement / Times																				
No.	Horse	ML Odds	SIM Odds	PAR	PAR+	Early	Mid	Late	1/4	1/2	Class Move	Move by Lengths	1st Timer (3 Max)	Bullet & Go	Back Bullet	2nd Race Parability	Jockey Win	Jockey ITM	Trainer Win	Trainer ITM
1	MARAUDER	10-1	9-1	MAYBE -5	24.6%	▲		▲	▲		▲	0.4					0.63	0.85	0.38	0.53
2	NON CONFORMING	8-1	6-1	MAYBE -5	22.9%			▲			▲	0.4					0.63	0.70	1.00	1.00
3	ZEUS'S ECHO	30-1	1001-1	NO	0.0%			▲			▲	1.0					0.53	0.69	0.54	0.41
4	STEEL	20-1	66-1	MAYBE -4	14.9%						▲	0.2					0.54	0.80	0.32	0.33
5	BRAVE PILOT	5-1	9/5	YES	57.4%	▲		▲	▲		→	0.0					0.69	0.67	0.63	0.63
6	FOURTH DIMENSION	15-1	9/2	MAYBE -4	38.2%	▲	▲		▲		▼	-0.8					0.32	0.31	0.32	0.33
7	FINAL STORY	1-1	5-1	YES	68.8%			▲			▼	-0.2					1.00	1.00	0.70	0.74
8	BLACKOUT TIME	4-1	27-1	YES	24.2%			▲			▼	-2.2					0.78	0.88	0.45	0.61

No.	CZone %	E (CZ%)	EP (CZ%)	P (CZ%)	PC (CZ%)	C (CZ%)	ANY (CZ%)	N/A (CZ%)	1st
3	48.1%	1 (19.8%)	2 (41.8%)	5 (15.8%)		4 (0.0%)			
2	41.8%	3 (48.1%)				6 (0.0%)			
7	20.7%	7 (20.7%)							
1	19.8%	8 (6.6%)							
5	15.8%								
8	6.6%								





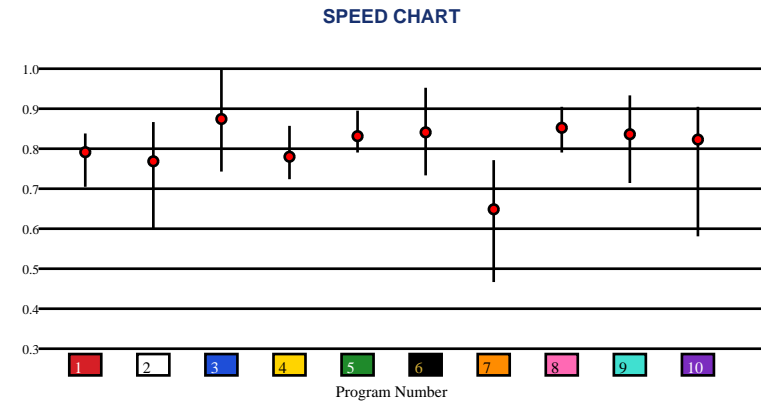
# CHURCHILL DOWNS | 06/27/2026 | Race 5 | 1 1/8 Miles | Turf | AnchorageL275k | Purse: \$275,000

Speed # Edge (>=3)		SIM Odds		SIM Speed #		1st Call Leader		Early Pace		Late Pace		Total Pace	
3	5	3	7/5	3	97.8	5	35.6%	5	89.0	2	98.0	10	178.0
		10	7/2	6	93.5	10	30.0%	10	86.3	6	97.3	6	175.3
		6	4-1	10	91.9	7	17.8%	7	84.3	3	94.3	2	174.0
		2	8-1	2	89.2	2	12.0%	6	78.0	1	92.3	5	171.0
		9	21-1	9	89.2	3	1.7%	9	77.3	9	92.0	9	169.3
		1	90-1	8	86.5	8	1.1%	2	76.0	10	91.7	3	168.0

Pace / Improvement / Times																				
No.	Horse	ML Odds	SIM Odds	PAR	PAR+	Early	Mid	Late	1/4	1/2	Class Move	Move by Lengths	1st Timer (3 Max)	Bullet & Go	Back Bullet	2nd Race Parability	Jockey Win	Jockey ITM	Trainer Win	Trainer ITM
1	WARMING	6-1	90-1	MAYBE -5	11.9%			▲			▲	0.2					0.69	0.67	0.95	0.89
2	UNMERITED FAVOR	15-1	8-1	MAYBE -2	37.3%	▲		▲			▲	1.0					0.53	0.69	0.85	0.92
3	WAY TO BE MARIE	8-1	7/5	YES	67.7%			▲			→	0.0					0.63	0.70	0.92	0.92
4	SETTLING STORM	30-1	1001-1	MAYBE -3	0.0%	▲		▲	▲	▲	▲	1.2					0.38	0.74	0.79	0.98
5	TIRUPATI	12-1	332-1	YES	0.0%			▲			▲	0.2					0.54	0.80	1.00	1.00
6	JUST BASKING	6-1	4-1	YES	51.5%			▲			▲	0.2					0.46	0.56	0.93	0.87
7	FOOTNOTE	50-1	1001-1	NO	0.0%		▲	▲		▲	▲	3.0					0.44	0.57	0.77	0.69
8	PIN UP BETTY	7/2	249-1	YES	6.2%	▲		▲	▲	▲	▲	0.2					0.63	0.85	0.71	0.85
9	VIVE VEUVE	5/2	21-1	YES	33.3%						→	0.0					1.00	1.00	0.98	0.95
10	STYLISH SUE	9/2	7/2	YES	47.7%	▲	▲		▲	▲	→	0.0					0.78	0.88	0.98	0.95

No.	CZone %
9	79.5%
4	77.1%
2	65.3%
7	59.7%
1	47.2%
5	46.5%

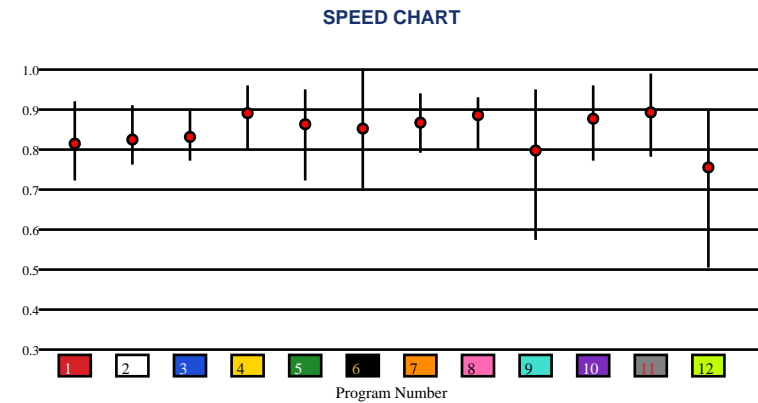
E (CZ%)	EP (CZ%)	P (CZ%)	PC (CZ%)	C (CZ%)	ANY (CZ%)	N/A (CZ%)	1st
10 (37.2%)	5 (46.5%)		2 (65.3%)	1 (47.2%)	4 (77.1%)		
			9 (79.5%)	3 (39.1%)	7 (59.7%)		
				6 (39.5%)			
				8 (6.5%)			



Speed # Edge (>=3)	SIM Odds		SIM Speed #		1st Call Leader		Early Pace		Late Pace		Total Pace	
9	8/5	8	92.3	8	56.9%	8	97.0 (+6)	9	98.0	8	183.7	
8	6-1	9	91.4	12	21.0%	12	91.3	2	94.0	2	181.0	
10	6-1	2	91.0	6	11.8%	5	89.7	4	93.3	9	180.5	
2	11-1	10	91.0	2	5.0%	6	88.7	3	89.3	10	176.0	
4	15-1	4	90.4	5	3.4%	7	88.3	10	88.7	3	176.0	
5	19-1	3	88.3	7	1.6%	10	87.3	8	86.7	5	171.7	

Pace / Improvement / Times																				
No.	Horse	ML Odds	SIM Odds	PAR	PAR+	Early	Mid	Late	1/4	1/2	Class Move	Move by Lengths	1st Timer (3 Max)	Bullet & Go	Back Bullet	2nd Race Parability	Jockey Win	Jockey ITM	Trainer Win	Trainer ITM
1	VAMOS CARLITOS	15-1	44-1	MAYBE -2	11.3%	▲	▲				▲	0.6					0.18	0.50	0.83	0.74
2	C K WONDER	8-1	11-1	MAYBE -3	29.1%	▲	▲		▲		→	0.0					0.38	0.74	0.47	1.00
3	MAX GOT EXCITED	12-1	49-1	MAYBE -4	13.2%						▲	0.8					0.29	0.50	0.85	0.69
4	MONEY SUPPLY	9/2	15-1	YES	24.3%			▲		▲	▲	0.6					0.45	0.73	0.90	0.71
5	KALAHARI DREAMS	8-1	19-1	YES	16.1%			▲		▲	→	0.0					0.63	0.70	0.22	0.62
6	HOLD MY BOURBON	15-1	199-1	YES	2.8%	▲	▲	▲	▲	▲	→	0.0					0.32	0.66	0.66	0.27
7	CAN'T HUSH THIS	15-1	166-1	YES	1.9%	▲	▲	▲	▲	▲	▲	0.8					0.09	0.45	0.83	0.74
8	BRING THE SMOKE	3-1	6-1	MAYBE -1	38.0%		▲			▲	▼	-1.0					0.54	0.80	0.43	0.85
9	KEEP IT EASY	6-1	8/5	YES	43.8%						→	0.0					1.00	1.00	0.47	1.00
10	DIVE BOMBER	15-1	6-1	YES	33.1%	▲	▲		▲	▲	▲	0.8					0.46	0.56	1.00	0.71
11	ECHO AGAIN	10-1	22-1	YES	16.7%						→	0.0					0.32	0.31	0.24	0.42
12	FORT SAM	20-1	20-1	MAYBE -4	17.3%						▲	1.2					0.47	0.63	0.97	0.78

No.	CZone %	E (CZ%)	EP (CZ%)	P (CZ%)	PC (CZ%)	C (CZ%)	ANY (CZ%)	N/A (CZ%)	1st
8	91.2%	6 (18.6%)	5 (36.6%)		1 (29.7%)	2 (19.6%)	8 (91.2%)		
10	90.1%	12 (21.0%)			10 (90.1%)	3 (14.7%)			
4	55.1%					4 (55.1%)			
5	36.6%					7 (2.7%)			
1	29.7%					9 (17.0%)			
12	21.0%					11 (12.7%)			



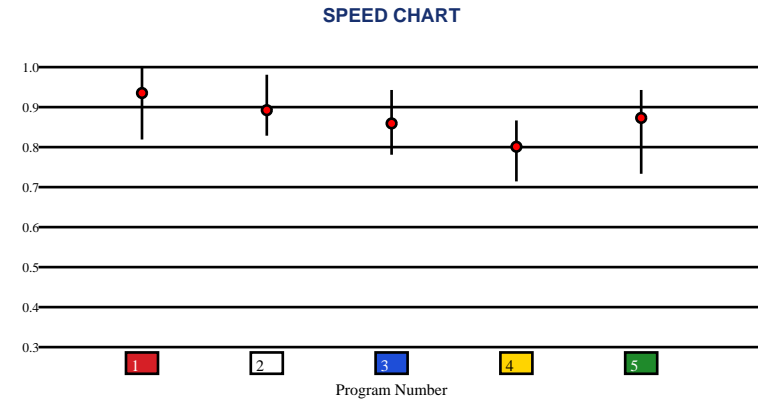


# CHURCHILL DOWNS | 06/27/2026 | Race 7 | 1 1/8 Miles | Dirt | FlrDLis-G2 | Purse: \$500,000

Speed # Edge (>=3)		SIM Odds		SIM Speed #		1st Call Leader		Early Pace		Late Pace		Total Pace	
1	3	1	9/5	1	96.1	3	44.2%	3	89.0	4	97.3	3	180.3
		3	5/2	3	94.8	1	37.6%	1	88.3	2	92.7	1	178.7
		5	7/2	2	92.5	5	18.0%	5	86.3	3	91.3	5	170.0
		2	7-1	5	91.9	2	0.2%	2	73.7	1	90.3	2	166.3
		4	249-1	4	84.7	4	0.0%	4	68.0	5	83.7	4	165.3

Pace / Improvement / Times																				
No.	Horse	ML Odds	SIM Odds	PAR	PAR+	Early	Mid	Late	1/4	1/2	Class Move	Move by Lengths	1st Timer (3 Max)	Bullet & Go	Back Bullet	2nd Race Parability	Jockey Win	Jockey ITM	Trainer Win	Trainer ITM
1	SPLENDORA	1-1	9/5	YES	38.6%	▲	▲	▲			→	0.0					0.63	0.85	0.61	0.61
2	REGALED	10-1	7-1	YES	15.5%	▲		▲			▼	-0.4					0.54	0.80	0.24	0.62
3	IMMERSIVE	8-1	5/2	YES	32.0%			▲			→	0.0					1.00	1.00	0.70	0.74
4	IN JUST MY HEELS	20-1	249-1	NO	0.0%			▲			▲	2.0					0.47	0.68	0.38	0.40
5	SHRED THE GNAR	6/5	7/2	YES	27.7%	▲		▲	▲		▼	-0.4					0.63	0.70	1.00	1.00

No.	CZone %	E (CZ%)	EP (CZ%)	P (CZ%)	PC (CZ%)	C (CZ%)	ANY (CZ%)	N/A (CZ%)	1st
3	92.1%	4 (0.0%)	5 (27.7%)			2 (6.4%)	1 (87.5%)		
1	87.5%						3 (92.1%)		
5	27.7%								
2	6.4%								
4	0.0%								



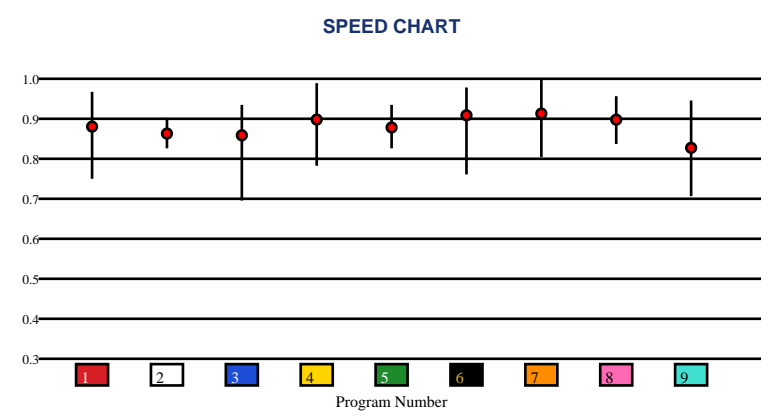


# CHURCHILL DOWNS | 06/27/2026 | Race 8 | 1 1/16 Miles | Turf | AmercnDbyL275k | Purse: \$275,000

Speed # Edge (>=3)		SIM Odds		SIM Speed #		1st Call Leader		Early Pace		Late Pace		Total Pace	
6	3	6	7/5	6	90.0	7	23.5%	3	88.3	2	91.0	2	173.3
		1	7/2	1	86.2	3	23.2%	4	85.7	6	89.0	6	173.0
		3	5-1	8	84.6	4	17.6%	7	85.3	1	89.0	1	171.7
		9	8-1	3	84.6	6	14.1%	6	84.0	8	86.7	3	170.3
		7	25-1	5	83.3	2	9.4%	1	82.7	9	84.3	8	166.0
		8	26-1	9	83.0	1	8.1%	2	82.3	5	82.7	5	163.3

Pace / Improvement / Times																				
No.	Horse	ML Odds	SIM Odds	PAR	PAR+	Early	Mid	Late	1/4	1/2	Class Move	Move by Lengths	1st Timer (3 Max)	Bullet & Go	Back Bullet	2nd Race Parability	Jockey Win	Jockey ITM	Trainer Win	Trainer ITM
1	IMMORTALISED	4-1	7/2	MAYBE -2	33.1%			▲			▼	-0.2					0.89	0.76	0.36	0.49
2	PREPPED	6-1	199-1	NO	0.0%	▲	▲	▲	▲		▲	0.8					1.00	1.00	0.51	0.55
3	FULMINE	15-1	5-1	MAYBE -5	26.5%	▲		▲			▼	-0.6					0.59	0.63	0.13	0.31
4	THOUSANDSTICKS	5-1	70-1	YES	1.2%			▲	▲	▲	→	0.0					0.81	0.79	1.00	1.00
5	SERAC	30-1	70-1	MAYBE -5	0.0%			▲			→	0.0					0.38	0.57	0.44	0.61
6	ALPYLAND	8/5	7/5	MAYBE -1	46.5%			▲		▲	▼	-0.2					0.72	0.82	0.22	0.42
7	COMPORT	15-1	25-1	YES	9.4%			▲			▼	-0.2					0.60	0.71	0.49	0.61
8	BUST OUT	6-1	26-1	MAYBE -3	5.3%				▲		▲	0.4					0.81	0.97	0.63	0.63
9	BRAVE FORCE	12-1	8-1	MAYBE -4	20.9%			▲	▲	▲	▲	1.0					0.69	0.90	0.54	0.63

No.	CZone %	E (CZ%)	EP (CZ%)	P (CZ%)	PC (CZ%)	C (CZ%)	ANY (CZ%)	N/A (CZ%)	1st
3	89.0%		4 (37.0%)	1 (25.3%)	6 (57.8%)	2 (12.5%)	3 (89.0%)		
8	69.6%			7 (7.4%)		5 (0.0%)	8 (69.6%)		
6	57.8%					9 (0.0%)			
4	37.0%								
1	25.3%								
2	12.5%								

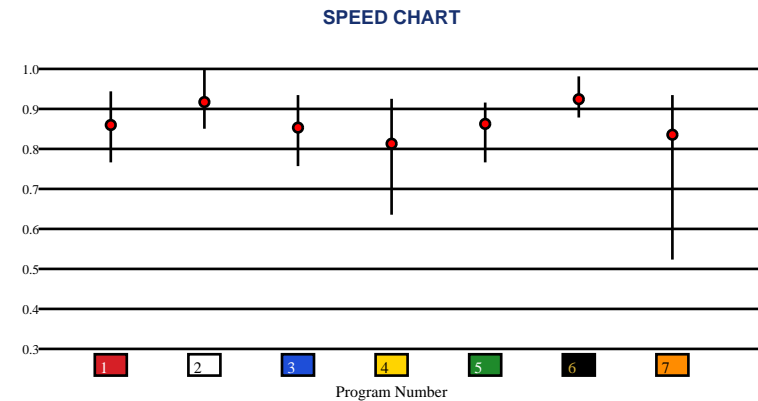


# CHURCHILL DOWNS | 06/27/2026 | Race 9 | 6 1/2 Furlongs | Dirt | Bango-G3 | Purse: \$275,000

Speed # Edge (>=3)	SIM Odds		SIM Speed #		1st Call Leader		Early Pace		Late Pace		Total Pace	
7	2-1	2	102.4	2	25.5%	2	92.3	2	100.0	2	192.3	
2	2-1	6	98.1	4	25.4%	3	91.3	6	98.7	6	188.3	
4	9/2	7	97.2	3	19.3%	4	90.7	1	97.0	4	186.3	
1	10-1	1	97.1	6	12.7%	6	89.7	4	95.7	1	186.0	
6	14-1	4	95.1	7	9.8%	7	89.3	7	92.7	7	182.0	
5	124-1	5	91.6	1	3.9%	1	89.0	5	87.0	3	178.3	

Pace / Improvement / Times																				
No.	Horse	ML Odds	SIM Odds	PAR	PAR+	Early	Mid	Late	1/4	1/2	Class Move	Move by Lengths	1st Timer (3 Max)	Bullet & Go	Back Bullet	2nd Race Parability	Jockey Win	Jockey ITM	Trainer Win	Trainer ITM
1	U DEVIL YOU	10-1	10-1	YES	42.7%						▲	0.8					0.69	0.65	0.40	0.16
2	CORNUCOPIAN	1-1	2-1	YES	68.9%						→	0.0					0.63	0.83	0.97	0.82
3	HARRODSBURG	12-1	142-1	YES	10.8%	▲	▲	▲	▲		▲	0.8					0.63	0.68	0.48	0.75
4	GOLD SWEEP	20-1	9/2	YES	39.2%			▲			→	0.0					0.38	1.00	0.51	0.73
5	EXTRA ANEJO	6-1	124-1	MAYBE -1	13.8%		▲	▲		▲	▲	0.8					0.78	0.86	0.61	0.72
6	DR. VENKMAN	7/2	14-1	YES	41.7%	▲	▲	▲	▲		▼	-1.0					0.45	0.71	1.00	1.00
7	BUILT	4-1	2-1	YES	46.4%	▲		▲	▲		▲	0.8					1.00	0.98	0.26	0.93

No.	CZone %	E (CZ%)	EP (CZ%)	P (CZ%)	PC (CZ%)	C (CZ%)	ANY (CZ%)	N/A (CZ%)	1st
2	87.2%		3 (28.7%)	1 (14.9%)	4 (31.6%)		2 (87.2%)		
5	73.8%		7 (44.0%)	6 (27.9%)	5 (73.8%)				
7	44.0%								
4	31.6%								
3	28.7%								
6	27.9%								



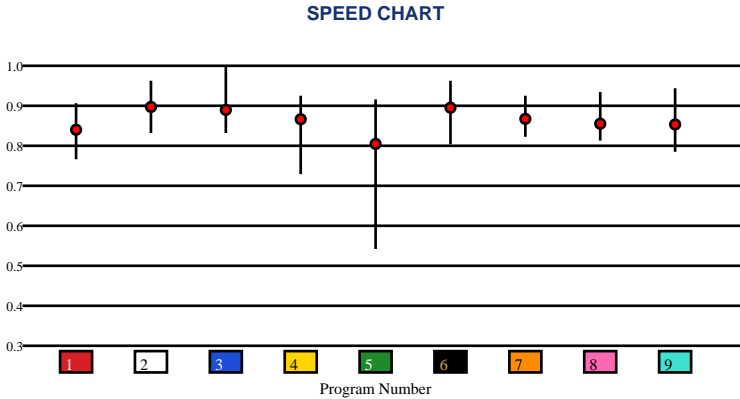


# CHURCHILL DOWNS | 06/27/2026 | Race 10 | 1 1/16 Miles | Turf | WiseDan-G2 | Purse: \$500,000

Speed # Edge (>=3)	SIM Odds	SIM Speed #	1st Call Leader	Early Pace	Late Pace	Total Pace					
5	2-1	6	99.0	1	35.9%	1	88.0	6	99.7	6	185.3 (+7)
6	2-1	2	95.7	3	27.8%	3	87.0	2	96.3	2	178.7
2	7-1	3	94.6	6	15.9%	6	85.7	7	93.3	5	172.7
3	8-1	5	93.6	7	6.2%	2	82.3	5	92.3	8	171.7
4	10-1	4	93.3	8	6.2%	9	82.0	8	90.3	7	169.3
7	52-1	7	93.2	2	4.2%	8	81.3	4	88.0	3	168.7

Pace / Improvement / Times																				
No.	Horse	ML Odds	SIM Odds	PAR	PAR+	Early	Mid	Late	1/4	1/2	Class Move	Move by Lengths	1st Timer (3 Max)	Bullet & Go	Back Bullet	2nd Race Parability	Jockey Win	Jockey ITM	Trainer Win	Trainer ITM
1	SILENT HEART	10-1	90-1	YES	18.6%			▲			▲	1.0					0.63	0.70	0.54	0.53
2	LAGYNOS	5/2	7-1	YES	49.0%	▲		▲	▲	▲	▲	0.2					0.78	0.88	0.55	0.50
3	MERCANTE	8-1	8-1	YES	42.5%					▲	▼	-0.6					0.53	0.69	1.00	1.00
4	CHASING THE CROWN	9/2	10-1	YES	37.6%						→	0.0					0.63	0.85	0.54	0.53
5	FLYING MOHAWK	15-1	2-1	YES	44.6%	▲	▲	▲			▲	1.0					0.54	0.80	0.35	0.59
6	DRESDEN ROW	7/2	2-1	YES	64.6%	▲	▲	▲	▲	▲	▲	1.0					1.00	1.00	0.64	0.62
7	FORT WASHINGTON	5-1	52-1	YES	30.4%			▲			▲	0.2					0.32	0.31	0.68	0.66
8	BRILLIANT BERTI	8-1	55-1	YES	26.4%			▲		▲	▲	0.2					0.36	0.62	0.73	0.52
9	BEACH GOLD	20-1	1001-1	YES	7.2%						▲	0.2					0.47	0.68	0.73	0.58

No.	CZone %	E (CZ%)	EP (CZ%)	P (CZ%)	PC (CZ%)	C (CZ%)	ANY (CZ%)	N/A (CZ%)	1st
9	74.5%		1 (55.5%)	3 (14.3%)	2 (47.0%)	4 (4.8%)			
5	72.2%				5 (72.2%)	7 (56.6%)			
6	70.7%				6 (70.7%)	8 (53.4%)			
7	56.6%				9 (74.5%)				
1	55.5%								
8	53.4%								



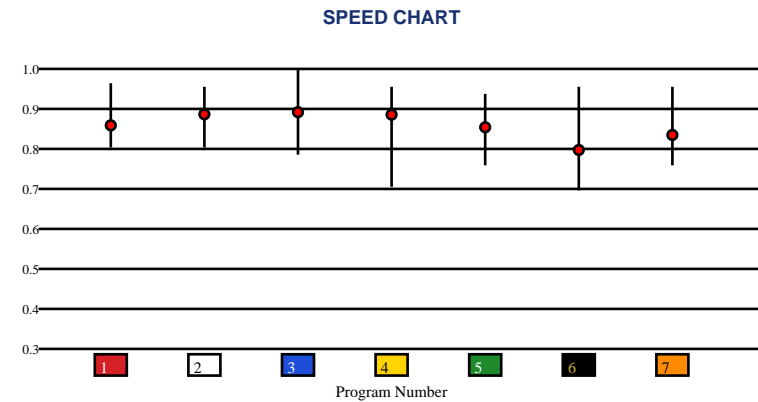


# CHURCHILL DOWNS | 06/27/2026 | Race 11 | 1 1/8 Miles | Dirt | SFoster-G1 | Purse: \$2,000,000

Speed # Edge (>=3)	SIM Odds		SIM Speed #		1st Call Leader		Early Pace		Late Pace		Total Pace	
3	8/5	3	107.9	5	28.1%	5	86.5	3	103.3	3	187.0 (+5)	
4	3-1	4	104.0	6	18.3%	1	85.7	4	102.0	7	182.0	
5	7-1	2	101.2	7	15.7%	7	85.3	6	99.3	5	181.0	
7	11-1	5	100.4	1	14.9%	2	85.0	7	96.7	2	179.0	
6	11-1	7	100.1	2	13.5%	3	83.7	5	94.5	6	177.3	
2	15-1	6	98.8	3	8.8%	6	78.0	2	94.0	4	177.0	

Pace / Improvement / Times																				
No.	Horse	ML Odds	SIM Odds	PAR	PAR+	Early	Mid	Late	1/4	1/2	Class Move	Move by Lengths	1st Timer (3 Max)	Bullet & Go	Back Bullet	2nd Race Parability	Jockey Win	Jockey ITM	Trainer Win	Trainer ITM
1	WILLY D'S	20-1	332-1	YES	0.0%			▲	▲	▲	▲	1.6					0.63	0.70	0.99	1.00
2	WHITE ABARRIO	3-1	15-1	YES	32.4%			▲			▲	0.6					1.00	1.00	0.73	0.69
3	SOVEREIGNTY	6/5	8/5	YES	60.0%	▲	▲		▲	▲	▲	0.6					0.32	0.31	0.85	0.59
4	BAEZA	6-1	3-1	YES	48.9%						▲	0.6					0.63	0.85	0.85	0.59
5	MAGNITUDE	7/2	7-1	YES	36.5%												0.78	0.88	1.00	0.95
6	FORGED STEEL	12-1	11-1	YES	30.8%			▲	▲	▲	▲	0.6					0.69	0.67	0.73	0.69
7	NAVAJO WARRIOR	15-1	11-1	YES	33.4%	▲	▲				▲	1.2					0.54	0.80	0.73	0.69

No.	CZone %	E (CZ%)	EP (CZ%)	P (CZ%)	PC (CZ%)	C (CZ%)	ANY (CZ%)	N/A (CZ%)	1st
7	89.9%	1 (14.9%)	5 (65.7%)		3 (54.8%)		2 (57.5%)		
5	65.7%	6 (18.3%)			4 (65.1%)		7 (89.9%)		
4	65.1%								
2	57.5%								
3	54.8%								
6	18.3%								





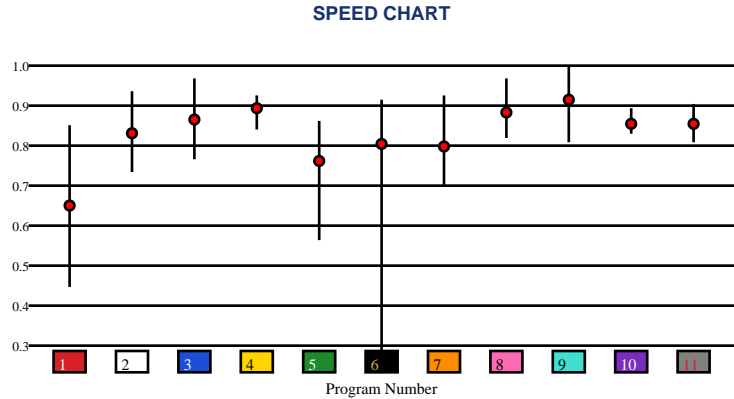
# CHURCHILL DOWNS | 06/27/2026 | Race 12 | 1 Mile | Turf | TepinL275k | Purse: \$275,000

Speed # Edge (>=3)		SIM Odds		SIM Speed #		1st Call Leader		Early Pace		Late Pace		Total Pace	
9	3	6	2-1	9	90.9 (+7)	1	22.2%	3	90.3	10	96.0 (+8)	9	174.3
		9	2-1	6	84.0	3	20.1%	2	90.0	9	88.3	8	171.3
		5	10-1	8	82.7	11	14.6%	8	90.0	6	87.7	3	170.7
		3	14-1	4	82.2	4	11.4%	1	88.0	7	87.7	5	170.7
		7	16-1	3	80.9	2	10.5%	5	86.3	11	85.3	7	170.3
		8	18-1	11	80.4	9	10.2%	9	86.0	5	84.3	10	170.3

## Pace / Improvement / Times

No.	Horse	ML Odds	SIM Odds	PAR	PAR+	Early	Mid	Late	1/4	1/2	Class Move	Move by Lengths	1st Timer (3 Max)	Bullet & Go	Back Bullet	2nd Race Parability	Jockey Win	Jockey ITM	Trainer Win	Trainer ITM
1	MESCAT	50-1	31-1	NO	18.5%	▲		▲	▲		▲	0.4					0.44	0.57	0.38	0.46
2	WOODSTOCK	30-1	249-1	YES	0.0%						▲	0.4					0.30	0.41	0.49	0.63
3	EAST JABIP	4-1	14-1	YES	25.7%	▲	▲				▲	0.2					1.00	1.00	0.93	1.00
4	FINAL ACCORD	6-1	76-1	MAYBE -1	2.8%			▲			▲	0.2					0.63	0.85	0.21	0.42
5	FAYE'S GOLD	15-1	10-1	NO	29.0%			▲		▲	▲	0.6					0.63	0.70	1.00	0.60
6	BOHEMIAN	10-1	2-1	MAYBE -2	43.7%		▲			▲	→	0.0					0.78	0.88	0.49	0.63
7	HOW ABOUT NOW	8-1	16-1	MAYBE -1	25.8%	▲		▲			▲	0.2					0.32	0.66	0.24	0.51
8	GROUND SUPPORT	3-1	18-1	YES	26.5%		▲			▲	▼	-1.0					0.09	0.45	0.09	0.42
9	TAM TAM	5-1	2-1	YES	60.9%			▲			▼	-0.2					0.32	0.31	0.11	0.45
10	USE ME	8-1	249-1	MAYBE -4	0.0%			▲		▲	▲	0.2					0.54	0.80	0.34	0.49
11	TURNER'S CHARM	10-1	199-1	MAYBE -3	0.0%			▲			▲	1.0					0.47	0.63	0.34	0.49

No.	CZone %	E (CZ%)	EP (CZ%)	P (CZ%)	PC (CZ%)	C (CZ%)	ANY (CZ%)	N/A (CZ%)	1st
3	77.5%		5 (48.1%)		1 (15.3%)	4 (0.0%)	3 (77.5%)		
8	55.6%		8 (55.6%)		2 (21.3%)	6 (50.8%)			
6	50.8%				7 (40.2%)	10 (6.5%)			
5	48.1%				9 (39.2%)	11 (37.9%)			
7	40.2%								
9	39.2%								



# SMART SHEETS

[Back to Race Summary](#)

## Data Guide & Structural Interpretation Framework

### DATA FOUNDATION

---

All Smart Sheets metrics are derived from up to the horse's 10 most recent races, where applicable. Calculations are structured to emphasize recent form, reflect demonstrated performance patterns, and reduce distortion from outdated efforts.

More recent races carry greater interpretive weight within projections and structural evaluations. This ensures current condition and form cycles are prioritized over distant historical performance.

### PERFORMANCE STANDARD

---

#### PAR (Race Standard)

PAR indicates whether a horse has previously run a speed figure equal to or greater than today's race standard.

Designations include:

**'YES'** – Has met or exceeded today's PAR

**'MAYBE'** -1 to -5 – Finished within 1 to 5 speed points of today's PAR

**'NO'** – Has not approached today's PAR level

The MAYBE designation identifies horses that have demonstrated competitive proximity without fully qualifying.

#### PAR+

PAR+ represents the percentage of simulations in which the horse meets or exceeds today's PAR standard. Higher percentages indicate more frequent projected competitiveness at today's performance level. PAR+ reflects projected probability rather than past qualification alone.

#### Performance Context

Approximately 5 Speed or Pace points equate to 1 length. This conversion provides scale when interpreting speed separation, PAR proximity, pace advantage, and structural positioning. Small numeric gaps may represent marginal positional differences, while larger separations may reflect more meaningful competitive distance.

## SPEED & VALUE STRUCTURE

---

### Speed # Edge (Minimum Threshold: 3 Points)

Speed # Edge highlights meaningful separation between projected top speed figures. An edge is recognized only when a horse holds a minimum 3-point advantage over the next highest projected figure.

Using the structural scale:

3 points ≈ slightly more than half a length

5 points ≈ approximately 1 length

This threshold filters out normal figure variance and isolates measurable separation.

### SIM Odds

SIM Odds represent fair-value odds derived from simulation probability. They reflect the model's internal estimate of each horse's likelihood of winning relative to the field.

When compared to Morning Line or live wagering odds, differences between projected probability and market pricing may help identify potential mispricing or value discrepancies.

Smart Sheets does not make wagering recommendations. SIM Odds provide a structured framework for evaluating probability versus price.

### SIM Speed #

SIM Speed is a projected performance figure generated from race simulations. It estimates how fast the horse is expected to run today under modeled pace and race-flow conditions. The number is most useful when evaluated relative to the field rather than in isolation.

### Speed Chart

The Speed Chart visually displays each horse's recent speed range:

'**Top**' of line – Maximum figure

'**Bottom**' of line – Minimum figure

'**Red Dot**' – Average figure

This allows evaluation of ceiling, floor, consistency, and volatility.

## PACE PROJECTIONS

---

### 1st Call Leader Projection

This metric estimates the likelihood a horse will be on the lead at the first call. It helps define projected early race structure and potential pace pressure.

### Early & Late Pace

These columns reflect performance strength in the front half and finishing phase of the race. Evaluating these collectively helps visualize projected race flow and potential positional advantages.

### Total Pace

Total Pace represents combined early and late performance strength. Separation within this column may indicate in-race structural advantage when evaluated relative to the field.

## POSITIONAL PROFILE

---

### C-Zone (Comfort Zone)

C-Zone measures how closely today's projected race conditions align with the pace environment under which the horse produced its best competitive finish. It evaluates race fit rather than raw speed. Higher percentages indicate stronger alignment between projected structure and demonstrated success conditions.

### Pace View

Pace View categorizes horses based on positional tendencies during competitive finishes.

'E' – Front-runner

'EP' – Lead or press

'P' – Tactical stalker

'PC' – Versatile stalker/closer

'C' – Closer

'ANY' – Demonstrated multiple effective styles

'N/A' – No competitive finish within 5 lengths

'1st' – First-time starter

The percentage displayed next to each horse represents its C-Zone score, combining positional tendency with projected structural fit.

## DEVELOPMENT & MOVEMENT SIGNALS

---

### **Class Move**

Indicates whether a horse is moving up in class, moving down in class, or remaining at a similar level. Class shifts may influence competitive positioning within today's race structure.

### **First-Time Starter Rank**

Ranks debut runners using internal evaluation metrics for comparison within the field. The maximum First-Time Starter score is 3, representing the strongest relative rating among debut runners in the race.

### **Workout Indicators**

Bullet / Bullet & Go indicators reflect strong recent workouts relative to the field and may signal preparation sharpness.

### **2nd Race Parability**

Applies to lightly raced horses making their second start. Indicates whether projected development meets or exceeds today's PAR standard.

This metric may carry increased relevance when few or no horses have previously met today's PAR threshold.

## CONNECTION STRENGTH

---

Jockey and Trainer ratings are scaled within the field and color-coded to reflect relative strength.

## COLOR FORMATTING & STRUCTURAL EDGE IDENTIFICATION

---

Smart Sheets uses color formatting and structured layout to visually identify potential structural advantages, including meaningful speed separation, PAR qualification or proximity, projected pace leadership, connection strength, and simulation pricing disparities.

Interpretation of how these elements interact remains the responsibility of the user.

## DISCLAIMER

---

Smart Sheets data is compiled using information derived from reputable industry sources and publicly available racing data. All data is used in good faith and presented for informational and educational purposes. While every effort is made to ensure accuracy and completeness, errors, omissions, or data inconsistencies may occur and are unintended.

Smart Sheets is a decision-support tool and does not guarantee outcomes.

## RESPONSIBLE WAGERING NOTICE

---

Horse racing wagering involves financial risk. Users should never wager more than they can afford to lose. If you cannot afford to lose anything, you should not gamble.

If you believe you may have a gambling problem, seek assistance immediately through a licensed professional or recognized responsible gaming organization.

All wagering decisions are solely the responsibility of the user.