



*See the Edge in Every Race*

## **SAM HOUSTON RACE PARK 06/13/2026**

How to Use Smart Sheets → <https://horseracingtoday.net/wp-content/uploads/2026/03/HRTSmartSheetsExplanations.pdf>

Race	Distance	Surface	Race Type	Purse
<a href="#"><u>Race 1</u></a>	300 Yards	Dirt	Optional Claiming	\$14,500
<a href="#"><u>Race 2</u></a>	350 Yards	Dirt	Maiden Claiming	\$11,500
<a href="#"><u>Race 3</u></a>	330 Yards	Dirt	Claiming	\$14,000
<a href="#"><u>Race 4</u></a>	3.95 Furlongs	Dirt	Stk 52k	\$52,000
<a href="#"><u>Race 5</u></a>	400 Yards	Dirt	Stk 50k	\$50,000
<a href="#"><u>Race 6</u></a>	3.95 Furlongs	Dirt	Stk 50k	\$50,000
<a href="#"><u>Race 7</u></a>	2 1/2 Furlongs	Dirt	Stk 52k	\$52,000
<a href="#"><u>Race 8</u></a>	330 Yards	Dirt	Stk 50k	\$50,000
<a href="#"><u>Race 9</u></a>	250 Yards	Dirt	Stk 52k	\$52,000
<a href="#"><u>Race 10</u></a>	400 Yards	Dirt	Stk 176k	\$176,250
<a href="#"><u>Race 11</u></a>	400 Yards	Dirt	Stk 234k	\$234,050
<a href="#"><u>Race 12</u></a>	350 Yards	Dirt	Stk 655k	\$655,100
<a href="#"><u>Appendix</u></a>	Smart Sheets Reference Guide			

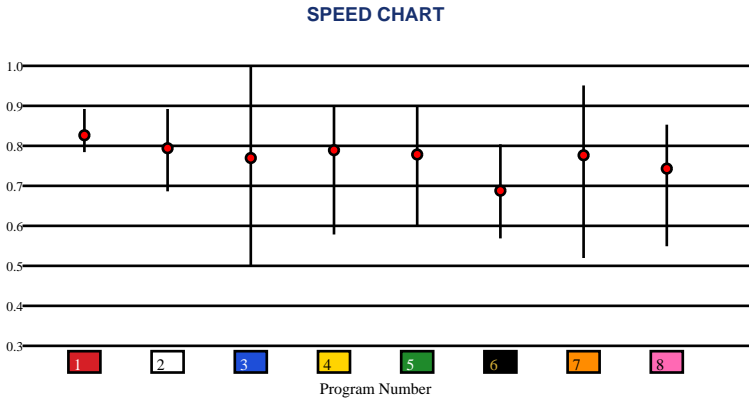


**SAM HOUSTON RACE PARK | 06/13/2026 | Race 1 | 300 Yards | Dirt | Optional Claiming | Purse: \$14,500**

Speed # Edge (>=3)	SIM Odds		SIM Speed #		1st Call Leader		Early Pace		Late Pace		Total Pace	
3	6/5	3	91.3 (+6)	7	14.1%	3	3	3	3	3	3	
4	4-1	4	85.2	1	13.0%	5	5	5	5	5	5	
5	9/2	1	84.6	2	12.7%	4	4	4	4	4	4	
1	15-1	5	83.8	6	12.6%	2	2	2	2	2	2	
2	17-1	2	80.5	3	12.1%	1	1	1	1	1	1	
6	25-1	8	74.2	4	12.1%	6	6	6	6	6	6	

Pace / Improvement / Times																				
No.	Horse	ML Odds	SIM Odds	PAR	PAR+	Early	Mid	Late	1/4	1/2	Class Move	Move by Lengths	1st Timer (3 Max)	Bullet & Go	Back Bullet	2nd Race Parability	Jockey Win	Jockey ITM	Trainer Win	Trainer ITM
1	CALMEBIGPOPPA	5-1	15-1	NO	0.0%												0.48	0.62	0.54	0.80
2	WILD SENORITA	8-1	17-1	NO	0.0%												0.65	0.56	0.24	0.70
3	FINE WINE M3	4-1	6/5	NO	0.0%												0.65	0.68	0.44	0.89
4	BLESS EM DIRTY	3-1	4-1	NO	0.0%												0.76	0.77	0.39	0.38
5	REGAL KING	7/2	9/2	NO	0.0%												0.72	0.55	0.75	1.00
6	GLORY CHICK CARTEL	6-1	25-1	NO	0.0%												0.70	0.80	1.00	0.97
7	MAJESTIC COCKTAIL	15-1	124-1	NO	0.0%												0.25	0.48	0.54	0.80
8	VP PRIZE TIME HEART	10-1	70-1	NO	0.0%												1.00	1.00	0.44	0.89

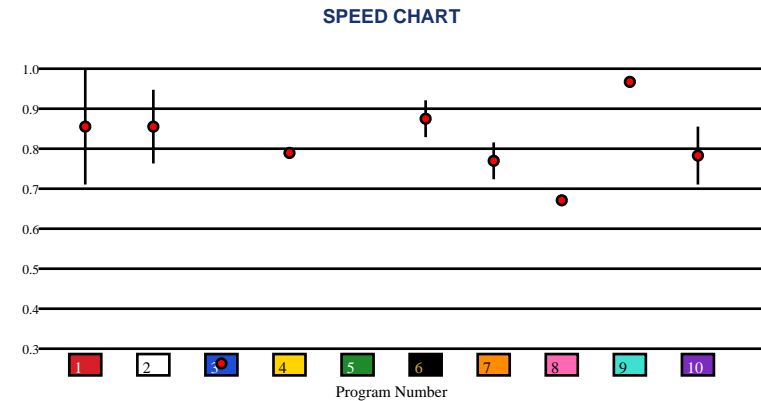
No.	CZone %	E (CZ%)	EP (CZ%)	P (CZ%)	PC (CZ%)	C (CZ%)	ANY (CZ%)	N/A (CZ%)	1st
1	0.0%							1 (0.0%)	
2	0.0%							2 (0.0%)	
3	0.0%							3 (0.0%)	
4	0.0%							4 (0.0%)	
5	0.0%							5 (0.0%)	
6	0.0%							6 (0.0%)	
								7 (0.0%)	
								8 (0.0%)	



Speed # Edge (>=3)		SIM Odds		SIM Speed #		1st Call Leader		Early Pace		Late Pace		Total Pace	
1	3	1	7/2	9	73.5	10	11.0%	1		1		1	
		5	5-1	5	70.2	7	10.5%	5		5		5	
		3	5-1	3	70.2	3	10.4%	8		8		8	
		4	6-1	4	70.1	2	10.3%	4		4		4	
		8	7-1	8	69.9	8	9.9%	9		9		9	
		9	9-1	6	66.6	9	9.9%	10		10		10	

Pace / Improvement / Times																				
No.	Horse	ML Odds	SIM Odds	PAR	PAR+	Early	Mid	Late	1/4	1/2	Class Move	Move by Lengths	1st Timer (3 Max)	Bullet & Go	Back Bullet	2nd Race Parability	Jockey Win	Jockey ITM	Trainer Win	Trainer ITM
1	VOLCOM TAC	6-1	7/2	NO	0.0%												0.42	0.84	0.29	0.75
2	FAVORITE TEX N	8-1	14-1	NO	0.0%												1.00	0.87	0.57	0.72
3	DREAM DYNASTY DB	12-1	5-1	NO	0.0%												0.39	0.75	0.87	0.97
4	LARRYS LOVE	8-1	6-1	NO	0.0%												0.87	1.00	0.50	0.55
5	CHECKOUT SHALA	15-1	5-1	NO	0.0%												0.55	0.76	0.23	0.57
6	CRYSTAL TRAIN B 29	7/2	332-1	NO	0.0%												0.50	0.99	0.65	1.00
7	WELL BALANCED TIME	20-1	1001-1	NO	0.0%												0.30	0.39	0.57	0.38
8	TEXAS SKY ROSE	3-1	7-1	NO	0.0%												0.82	0.88	0.57	0.72
9	CUT THE LINE	9/2	9-1	NO	0.0%												0.46	0.64	1.00	0.88
10	FIRE TO THE EYES	12-1	1001-1	NO	0.0%												0.22	0.48	0.48	0.66

No.	CZone %	E (CZ%)	EP (CZ%)	P (CZ%)	PC (CZ%)	C (CZ%)	ANY (CZ%)	N/A (CZ%)	1st
1	0.0%							1 (0.0%)	
2	0.0%							2 (0.0%)	
3	0.0%							3 (0.0%)	
4	0.0%							4 (0.0%)	
5	0.0%							5 (0.0%)	
6	0.0%							6 (0.0%)	
								7 (0.0%)	
								8 (0.0%)	
								9 (0.0%)	
								10 (0.0%)	



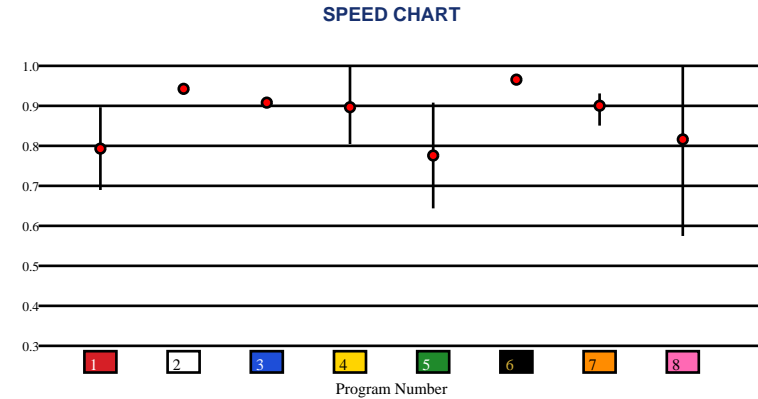


# SAM HOUSTON RACE PARK | 06/13/2026 | Race 3 | 330 Yards | Dirt | Claiming | Purse: \$14,000

Speed # Edge (>=3)	SIM Odds		SIM Speed #		1st Call Leader		Early Pace		Late Pace		Total Pace	
8	5/2		2	78.6	5	13.4%	3		3		3	
6	9/2		6	78.5	7	13.2%	6		6		6	
2	5-1		7	78.4	8	13.2%	2		2		2	
3	5-1		3	78.4	6	13.0%	8		8		8	
4	8-1		4	78.2	2	12.3%	4		4		4	
5	23-1		8	77.4	4	11.7%	7		7		7	

Pace / Improvement / Times																				
No.	Horse	ML Odds	SIM Odds	PAR	PAR+	Early	Mid	Late	1/4	1/2	Class Move	Move by Lengths	1st Timer (3 Max)	Bullet & Go	Back Bullet	2nd Race Parability	Jockey Win	Jockey ITM	Trainer Win	Trainer ITM
1	SHE HIM WATTERS	15-1	58-1	NO	0.0%												0.87	1.00	0.27	0.37
2	KAS CARTEL GL	10-1	5-1	NO	0.0%												0.46	0.64	0.55	0.59
3	POPPIN PURSUIT	8/5	5-1	NO	0.0%												1.00	0.87	1.00	1.00
4	HEY COUNTRY GIRL	8-1	8-1	NO	0.0%												0.33	0.43	0.17	0.28
5	PRIZE TIME GIRL	15-1	23-1	NO	0.0%												0.42	0.62	0.26	0.26
6	ML SR HAYDEN JAMES	3-1	9/2	NO	0.0%												0.39	0.75	0.67	0.74
7	NOAH MOON	9/2	42-1	NO	0.0%												0.61	0.80	0.21	0.59
8	NO SE PRIMO	10-1	5/2	NO	0.0%												0.46	0.30	0.17	0.28

No.	CZone %	E (CZ%)	EP (CZ%)	P (CZ%)	PC (CZ%)	C (CZ%)	ANY (CZ%)	N/A (CZ%)	1st
1	0.0%							1 (0.0%)	
2	0.0%							2 (0.0%)	
3	0.0%							3 (0.0%)	
4	0.0%							4 (0.0%)	
5	0.0%							5 (0.0%)	
6	0.0%							6 (0.0%)	
								7 (0.0%)	
								8 (0.0%)	



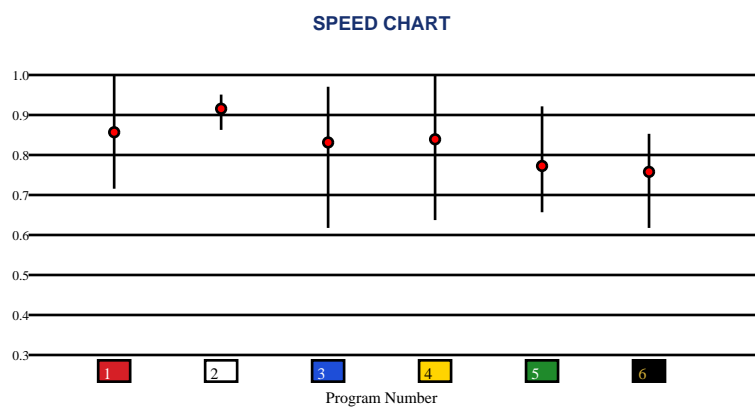


**SAM HOUSTON RACE PARK | 06/13/2026 | Race 4 | 3.95 Furlongs | Dirt | Stk 52k | Purse: \$52,000**

Speed # Edge (>=3)	SIM Odds	SIM Speed #	1st Call Leader	Early Pace	Late Pace	Total Pace
3	7/5	3	2 18.2%	3	3	3
4	7/2	2	5 16.7%	2	2	2
1	5-1	4	3 16.6%	4	4	4
2	7-1	1	1 16.6%	1	1	1
5	19-1	5	6 16.5%	5	5	5
6	124-1	6	4 15.4%	6	6	6

Pace / Improvement / Times																				
No.	Horse	ML Odds	SIM Odds	PAR	PAR+	Early	Mid	Late	1/4	1/2	Class Move	Move by Lengths	1st Timer (3 Max)	Bullet & Go	Back Bullet	2nd Race Parability	Jockey Win	Jockey ITM	Trainer Win	Trainer ITM
1	EYE WILL DECIDE	7/2	5-1	NO	0.0%												0.38	0.52	0.49	0.64
2	GJR ROOSTER	5/2	7-1	NO	0.0%												0.68	0.72	1.00	1.00
3	FIRE BOLT B	6/5	7/5	NO	0.0%												1.00	1.00	1.00	0.55
4	MASTER REIGNS	6-1	7/2	NO	0.0%												0.72	0.82	0.79	0.51
5	NO FAUX	12-1	19-1	NO	0.0%												0.61	0.68	0.72	0.47
6	GLADIATOR	15-1	124-1	NO	0.0%												0.27	0.36	0.26	0.32

No.	CZone %	E (CZ%)	EP (CZ%)	P (CZ%)	PC (CZ%)	C (CZ%)	ANY (CZ%)	N/A (CZ%)	1st
2	60.8%	1 (16.6%)	2 (60.8%)	4 (3.8%)			6 (60.8%)		
6	60.8%	3 (16.6%)							
5	45.3%	5 (45.3%)							
1	16.6%								
3	16.6%								
4	3.8%								



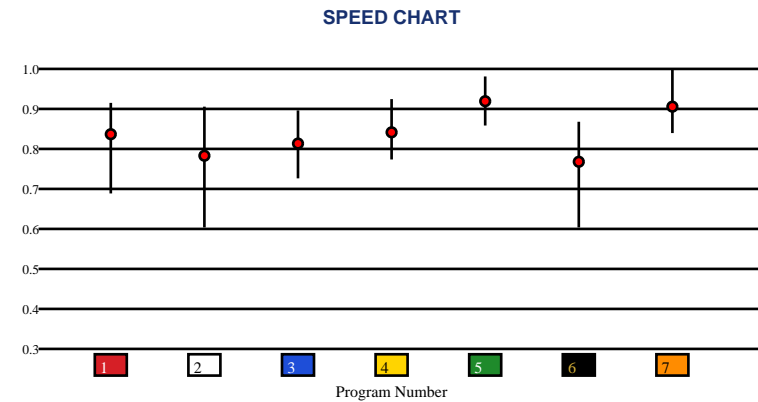


# SAM HOUSTON RACE PARK | 06/13/2026 | Race 5 | 400 Yards | Dirt | Stk 50k | Purse: \$50,000

Speed # Edge (>=3)		SIM Odds		SIM Speed #		1st Call Leader		Early Pace		Late Pace		Total Pace	
4	4	7	6/5	7	100.3	7	15.2%	7		7		7	
		2	5/2	5	96.1	2	14.6%	2		2		2	
		5	4-1	2	92.5	4	14.3%	5		5		5	
		4	17-1	4	92.1	6	14.3%	4		4		4	
		3	52-1	3	86.0	1	14.2%	1		1		1	
		1	332-1	1	79.2	3	13.8%	3		3		3	

Pace / Improvement / Times																				
No.	Horse	ML Odds	SIM Odds	PAR	PAR+	Early	Mid	Late	1/4	1/2	Class Move	Move by Lengths	1st Timer (3 Max)	Bullet & Go	Back Bullet	2nd Race Parability	Jockey Win	Jockey ITM	Trainer Win	Trainer ITM
1	KADILLAKING	8-1	332-1	NO	0.0%												0.83	0.72	0.63	0.78
2	INFLATION	4-1	5/2	NO	0.0%												0.72	0.82	1.00	1.00
3	ZEF LUCKY SEIS	12-1	52-1	NO	0.0%												0.42	0.81	0.63	0.78
4	DM CHASING MONEY	6-1	17-1	NO	0.0%												0.51	0.66	0.25	0.52
5	IMA CHILI	3-1	4-1	NO	0.0%												1.00	1.00	0.63	0.78
6	SLOWW DOWNN	20-1	499-1	NO	0.0%												0.27	0.36	0.63	0.78
7	KAS PRIETITO	7/5	6/5	NO	0.0%												0.52	0.45	0.63	0.81

No.	CZone %	E (CZ%)	EP (CZ%)	P (CZ%)	PC (CZ%)	C (CZ%)	ANY (CZ%)	N/A (CZ%)	1st
1	0.0%							1 (0.0%)	
2	0.0%							2 (0.0%)	
3	0.0%							3 (0.0%)	
4	0.0%							4 (0.0%)	
5	0.0%							5 (0.0%)	
6	0.0%							6 (0.0%)	
								7 (0.0%)	



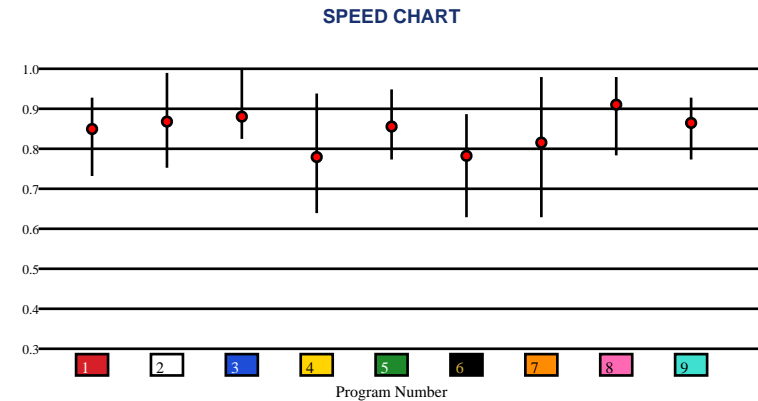


**SAM HOUSTON RACE PARK | 06/13/2026 | Race 6 | 3.95 Furlongs | Dirt | Stk 50k | Purse: \$50,000**

Speed # Edge (>=3)		SIM Odds		SIM Speed #		1st Call Leader		Early Pace		Late Pace		Total Pace	
8	5	7	7/5	7	88.6	6	12.2%	7		7		7	
		2	4-1	2	87.4	7	11.6%	2		2		2	
		8	6-1	9	86.5	9	11.5%	8		8		8	
		9	10-1	8	85.2	3	11.4%	9		9		9	
		6	20-1	1	83.8	5	11.4%	1		1		1	
		3	23-1	3	83.6	4	11.2%	3		3		3	

Pace / Improvement / Times																				
No.	Horse	ML Odds	SIM Odds	PAR	PAR+	Early	Mid	Late	1/4	1/2	Class Move	Move by Lengths	1st Timer (3 Max)	Bullet & Go	Back Bullet	2nd Race Parability	Jockey Win	Jockey ITM	Trainer Win	Trainer ITM
1	PEVS KIOTE MOON	3-1	25-1	NO	0.0%												0.51	0.57	0.58	0.79
2	HONDO HOCKS	10-1	4-1	NO	0.0%												0.27	0.36	0.67	1.00
3	YIPPEE KI YEY	4-1	23-1	NO	0.0%												1.00	1.00	1.00	0.95
4	SUPERFRAGILISTIC	15-1	42-1	NO	0.0%												0.51	0.57	0.26	0.56
5	LOUISIANA MYSTERY	8-1	199-1	NO	0.0%												0.83	0.72	0.79	0.89
6	MUSIC DASH	20-1	20-1	NO	0.0%												0.38	0.25	0.58	0.79
7	DAZZLIN DRAMA	6-1	7/5	NO	0.0%												0.51	0.66	0.67	1.00
8	THRILL AND FURY	2-1	6-1	NO	0.0%												0.35	0.69	0.33	0.74
9	UNLIMITED CANDY (AE)	10-1	10-1	NO	0.0%												0.27	0.36	0.35	0.41

No.	CZone %	E (CZ%)	EP (CZ%)	P (CZ%)	PC (CZ%)	C (CZ%)	ANY (CZ%)	N/A (CZ%)	1st
1	51.4%	7 (37.6%)	2 (51.4%)	5 (4.0%)		4 (0.0%)	1 (51.4%)	3 (0.0%)	
2	51.4%	8 (10.5%)				6 (0.0%)		9 (0.0%)	
7	37.6%								
8	10.5%								
5	4.0%								
4	0.0%								



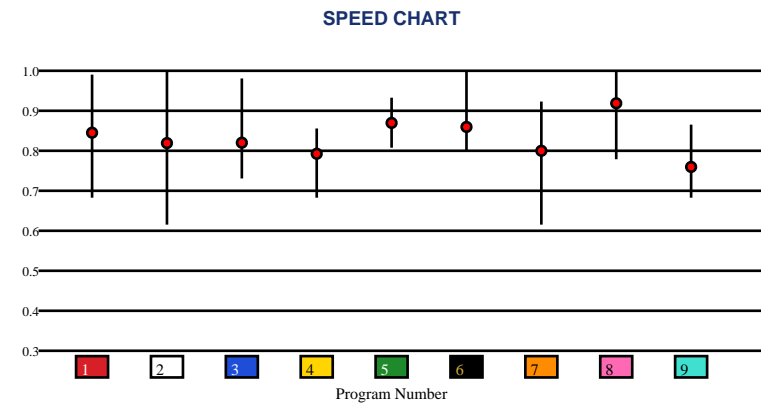


**SAM HOUSTON RACE PARK | 06/13/2026 | Race 7 | 2 1/2 Furlongs | Dirt | Stk 52k | Purse: \$52,000**

Speed # Edge (>=3)		SIM Odds		SIM Speed #		1st Call Leader		Early Pace		Late Pace		Total Pace	
3	6	7	3-1	8	94.6	2	11.8%	8		8		8	
		8	7/2	3	94.1	5	11.7%	7		7		7	
		3	9/2	1	92.4	1	11.6%	3		3		3	
		2	6-1	5	91.7	7	11.6%	2		2		2	
		1	6-1	7	91.5	4	11.2%	1		1		1	
		5	24-1	2	87.8	8	11.0%	9		9		9	

Pace / Improvement / Times																				
No.	Horse	ML Odds	SIM Odds	PAR	PAR+	Early	Mid	Late	1/4	1/2	Class Move	Move by Lengths	1st Timer (3 Max)	Bullet & Go	Back Bullet	2nd Race Parability	Jockey Win	Jockey ITM	Trainer Win	Trainer ITM
1	TH MAI TAI TOM	20-1	6-1	NO	0.0%												0.42	0.81	0.51	0.62
2	IMMA SWEET DIVA	10-1	6-1	NO	0.0%												0.32	0.62	0.34	0.58
3	PERRY BOGART	6-1	9/2	NO	0.0%												0.59	0.71	0.40	0.41
4	YM FLYIN	15-1	332-1	NO	0.0%												0.54	0.63	0.51	0.62
5	TOP COWBOY	7/2	24-1	NO	0.0%												0.83	0.72	1.00	0.80
6	WHATA LOTA BOY	5/2	44-1	NO	0.0%												0.27	0.36	0.51	0.62
7	LIBERATER	9/2	3-1	NO	0.0%												0.59	0.71	0.42	1.00
8	ONTHROCKS	8-1	7/2	NO	0.0%												1.00	1.00	0.25	0.59
9	DETERMINED	12-1	1001-1	NO	0.0%												0.72	0.82	0.66	0.34

No.	CZone %	E (CZ%)	EP (CZ%)	P (CZ%)	PC (CZ%)	C (CZ%)	ANY (CZ%)	N/A (CZ%)	1st
9	50.8%						9 (50.8%)	1 (0.0%)	
1	0.0%							2 (0.0%)	
2	0.0%							3 (0.0%)	
4	0.0%							4 (0.0%)	
3	0.0%							5 (0.0%)	
5	0.0%							6 (0.0%)	
								7 (0.0%)	
								8 (0.0%)	



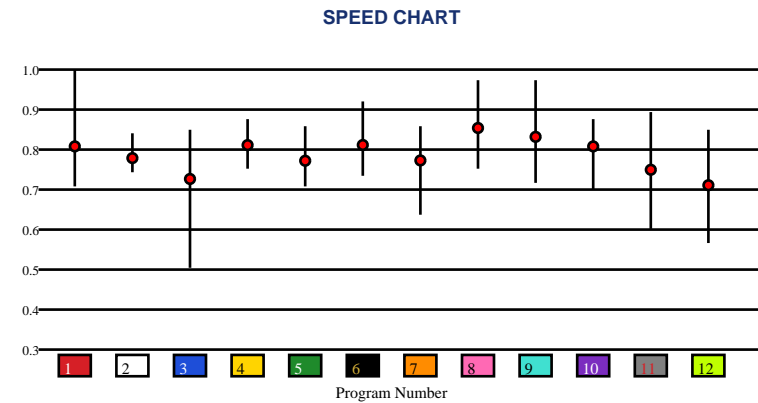


# SAM HOUSTON RACE PARK | 06/13/2026 | Race 8 | 330 Yards | Dirt | Stk 50k | Purse: \$50,000

Speed # Edge (>=3)	SIM Odds		SIM Speed #		1st Call Leader		Early Pace		Late Pace		Total Pace	
1	5/2	8	99.5	3	9.2%	8	8	8	8	8	8	
8	5/2	1	96.9	5	8.9%	1	1	1	1	1	1	
9	5-1	9	96.0	11	8.6%	9	9	9	9	9	9	
7	8-1	6	95.7	4	8.5%	7	7	7	7	7	7	
6	12-1	7	93.4	6	8.4%	6	6	6	6	6	6	
10	20-1	10	93.3	7	8.4%	2	2	2	2	2	2	

Pace / Improvement / Times																				
No.	Horse	ML Odds	SIM Odds	PAR	PAR+	Early	Mid	Late	1/4	1/2	Class Move	Move by Lengths	1st Timer (3 Max)	Bullet & Go	Back Bullet	2nd Race Parability	Jockey Win	Jockey ITM	Trainer Win	Trainer ITM
1	KILLIN TIME	10-1	5/2	NO	0.0%												0.27	0.36	0.44	0.63
2	MRS PYC PAINTED NOVA	15-1	1001-1	NO	0.0%												0.68	0.72	0.44	0.63
3	DM BELLA STAR	20-1	249-1	NO	0.0%												0.83	0.72	0.20	0.42
4	JESS LOUISIANA GIRL	6-1	62-1	NO	0.0%												0.51	0.66	1.00	0.86
5	TAKILLYA ONTHE HOCKS	15-1	1001-1	NO	0.0%												0.20	0.51	0.57	0.49
6	CELEBRATINGTHEEAGLE	12-1	12-1	NO	0.0%												0.55	0.65	0.33	1.00
7	CELENA OLENA	10-1	8-1	NO	0.0%												0.38	0.52	0.57	0.49
8	RUSE DYNASTY 123	9/2	5/2	NO	0.0%												0.35	0.51	0.12	0.50
9	COWGURL UP	5/2	5-1	NO	0.0%												0.72	0.82	0.29	0.62
10	JJ JESSA DYNASTY	7/2	20-1	NO	0.0%												0.55	0.65	0.44	0.63
11	CHILE PIQUIN (AE)	10-1	199-1	NO	0.0%												1.00	1.00	0.44	0.63
12	HOT CINDI (AE)	20-1	124-1	NO	0.0%												0.55	0.65	0.44	0.63

No.	CZone %	E (CZ%)	EP (CZ%)	P (CZ%)	PC (CZ%)	C (CZ%)	ANY (CZ%)	N/A (CZ%)	1st
1	0.0%							1 (0.0%)	
2	0.0%							2 (0.0%)	
3	0.0%							3 (0.0%)	
4	0.0%							4 (0.0%)	
5	0.0%							5 (0.0%)	
6	0.0%							6 (0.0%)	
								7 (0.0%)	
								8 (0.0%)	
								9 (0.0%)	
								10 (0.0%)	
								11 (0.0%)	
								12 (0.0%)	



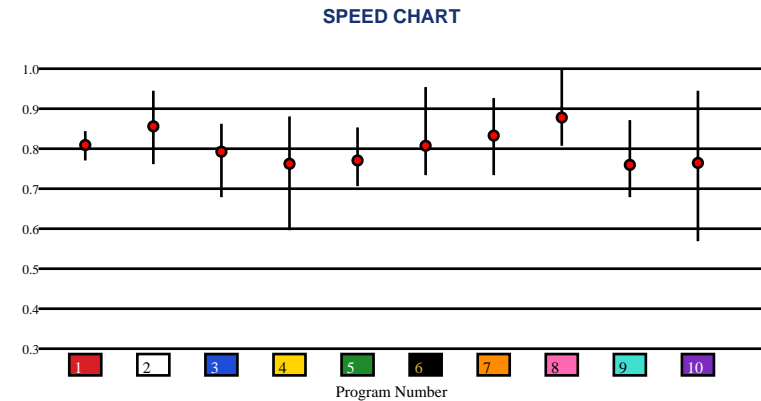


# SAM HOUSTON RACE PARK | 06/13/2026 | Race 9 | 250 Yards | Dirt | Stk 52k | Purse: \$52,000

Speed # Edge (>=3)	SIM Odds		SIM Speed #		1st Call Leader		Early Pace		Late Pace		Total Pace	
8	7/5	8	96.7 (+7)	6	11.0%	8	8	8	8	8	8	
4	7/2	4	89.7	2	11.0%	4	4	4	4	4	4	
2	12-1	7	88.7	8	10.6%	2	2	2	2	2	2	
9	15-1	1	88.1	10	10.3%	9	9	9	9	9	9	
10	19-1	2	88.1	7	10.0%	1	1	1	1	1	1	
7	19-1	3	87.4	3	9.9%	7	7	7	7	7	7	

Pace / Improvement / Times																				
No.	Horse	ML Odds	SIM Odds	PAR	PAR+	Early	Mid	Late	1/4	1/2	Class Move	Move by Lengths	1st Timer (3 Max)	Bullet & Go	Back Bullet	2nd Race Parability	Jockey Win	Jockey ITM	Trainer Win	Trainer ITM
1	SHOT OF TAKILLYA	3-1	499-1	NO	0.0%												1.00	1.00	0.41	0.31
2	FABULOUS CASINA	9/2	12-1	NO	0.0%												0.48	0.84	0.24	0.42
3	BLASTED EAGLE	12-1	25-1	NO	0.0%												0.68	0.77	0.57	0.51
4	CATTY SIX B	15-1	7/2	NO	0.0%												0.70	0.80	0.72	0.55
5	TEXAS DIVA RL	20-1	28-1	NO	0.0%												0.65	0.56	0.52	0.48
6	CHILITOSSWEETBRUJA	20-1	33-1	NO	0.0%												0.53	0.64	0.19	0.22
7	GRACE N DASH	8-1	19-1	NO	0.0%												0.76	0.77	0.28	0.21
8	GOODTIME IN TEXAS	6-1	7/5	NO	0.0%												0.38	0.64	1.00	0.63
9	HEZA FAST DYNASTY	7/2	15-1	NO	0.0%												0.68	0.77	0.52	0.48
10	DEFIVES	12-1	19-1	NO	0.0%												0.95	0.88	0.72	1.00

No.	CZone %	E (CZ%)	EP (CZ%)	P (CZ%)	PC (CZ%)	C (CZ%)	ANY (CZ%)	N/A (CZ%)	1st
1	0.0%							1 (0.0%)	
2	0.0%							2 (0.0%)	
3	0.0%							3 (0.0%)	
4	0.0%							4 (0.0%)	
5	0.0%							5 (0.0%)	
6	0.0%							6 (0.0%)	
								7 (0.0%)	
								8 (0.0%)	
								9 (0.0%)	
								10 (0.0%)	





# SAM HOUSTON RACE PARK | 06/13/2026 | Race 10 | 400 Yards | Dirt | Stk 176k | Purse: \$176,250

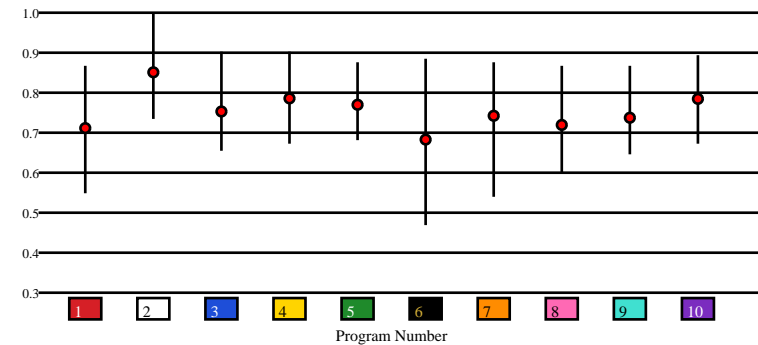
Speed # Edge (>=3)		SIM Odds		SIM Speed #		1st Call Leader		Early Pace		Late Pace		Total Pace	
2	3	2	2-1	2	99.7	9	10.9%	2		2		2	
		4	7/2	4	96.2	8	10.8%	4		4		4	
		7	6-1	10	92.1	1	10.5%	7		7		7	
		1	9-1	7	91.7	4	10.4%	1		1		1	
		3	23-1	1	90.3	3	10.2%	3		3		3	
		6	24-1	3	89.4	2	10.0%	5		5		5	

### Pace / Improvement / Times

No.	Horse	ML Odds	SIM Odds	PAR	PAR+	Early	Mid	Late	1/4	1/2	Class Move	Move by Lengths	1st Timer (3 Max)	Bullet & Go	Back Bullet	2nd Race Parability	Jockey Win	Jockey ITM	Trainer Win	Trainer ITM
1	JEG FASCINATION CHIK	30-1	9-1	NO	0.0%												0.55	0.72	0.28	0.69
2	BLUDZ VALIANT POLICY	1-1	2-1	NO	0.0%												0.83	0.72	1.00	1.00
3	THIS EAGLES A LEADER	4-1	23-1	NO	0.0%												0.68	0.72	0.42	0.60
4	BM CANDI ROYALE	20-1	7/2	NO	0.0%												0.35	0.69	0.16	0.50
5	FIRE COWGIRL	15-1	62-1	NO	0.0%												0.46	0.90	0.23	0.85
6	ANAS JULI ANN	12-1	24-1	NO	0.0%												0.62	0.76	0.28	0.69
7	POLITICAL LOOKER	6-1	6-1	NO	0.0%												0.62	0.76	0.28	0.69
8	CARPE DIEM BABY	15-1	47-1	NO	0.0%												0.72	0.82	0.35	0.55
9	JESS SO FLY	20-1	25-1	NO	0.0%												0.38	0.52	0.24	0.76
10	KARMA CHA CHING	8-1	30-1	NO	0.0%												1.00	1.00	0.09	0.44

No.	CZone %	E (CZ%)	EP (CZ%)	P (CZ%)	PC (CZ%)	C (CZ%)	ANY (CZ%)	N/A (CZ%)	1st
1	0.0%							1 (0.0%)	
2	0.0%							2 (0.0%)	
3	0.0%							3 (0.0%)	
4	0.0%							4 (0.0%)	
5	0.0%							5 (0.0%)	
6	0.0%							6 (0.0%)	
								7 (0.0%)	
								8 (0.0%)	
								9 (0.0%)	
								10 (0.0%)	

### SPEED CHART



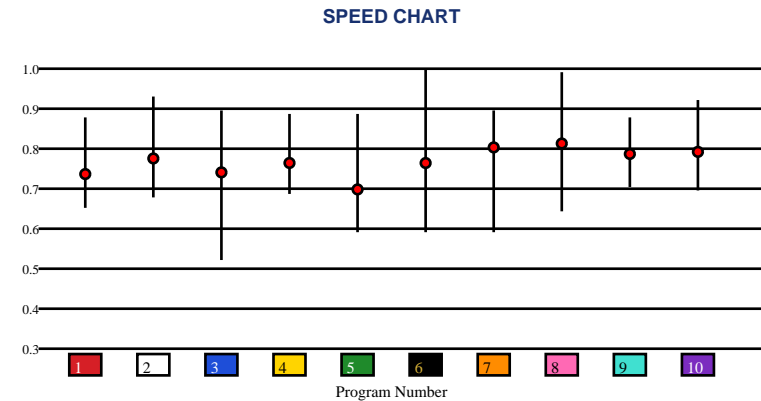


**SAM HOUSTON RACE PARK | 06/13/2026 | Race 11 | 400 Yards | Dirt | Stk 234k | Purse: \$234,050**

Speed # Edge (>=3)	SIM Odds		SIM Speed #		1st Call Leader		Early Pace		Late Pace		Total Pace	
	2	3-1	2	100.7	9	11.1%	2		2		2	
	3	9/2	10	97.3	7	10.4%	7		7		7	
	6	5-1	9	97.3	2	10.3%	6		6		6	
	7	8-1	6	94.7	3	10.0%	3		3		3	
	10	11-1	8	94.0	4	9.9%	8		8		8	
	8	12-1	7	93.9	10	9.9%	10		10		10	

Pace / Improvement / Times																				
No.	Horse	ML Odds	SIM Odds	PAR	PAR+	Early	Mid	Late	1/4	1/2	Class Move	Move by Lengths	1st Timer (3 Max)	Bullet & Go	Back Bullet	2nd Race Parability	Jockey Win	Jockey ITM	Trainer Win	Trainer ITM
1	COBRA STONE 77	15-1	33-1	NO	0.0%												0.68	0.72	0.42	0.60
2	LITENIN	3-1	3-1	NO	0.0%												0.56	0.71	0.35	0.55
3	JESS DRIVE	8-1	9/2	NO	0.0%												0.51	0.66	0.48	0.64
4	PRIZE TIME LELO	10-1	249-1	NO	0.0%												0.35	0.69	0.19	0.63
5	ATLAS RISE	20-1	62-1	NO	0.0%												0.32	0.62	0.35	0.55
6	ROYALIST	7/2	5-1	NO	0.0%												0.83	0.72	1.00	1.00
7	DI KVN WAVEN	4-1	8-1	NO	0.0%												0.54	0.63	0.27	0.44
8	EAGLE ON A JUNE BUG	6-1	12-1	NO	0.0%												0.42	0.81	0.36	0.66
9	RUN ON MONDAY	15-1	14-1	NO	0.0%												0.38	0.52	0.24	0.76
10	RING A LING DING	10-1	11-1	NO	0.0%												1.00	1.00	0.48	0.64

No.	CZone %	E (CZ%)	EP (CZ%)	P (CZ%)	PC (CZ%)	C (CZ%)	ANY (CZ%)	N/A (CZ%)	1st
1	0.0%							1 (0.0%)	
2	0.0%							2 (0.0%)	
3	0.0%							3 (0.0%)	
4	0.0%							4 (0.0%)	
5	0.0%							5 (0.0%)	
6	0.0%							6 (0.0%)	
								7 (0.0%)	
								8 (0.0%)	
								9 (0.0%)	
								10 (0.0%)	





**SAM HOUSTON RACE PARK | 06/13/2026 | Race 12 | 350 Yards | Dirt | Stk 655k | Purse: \$655,100**

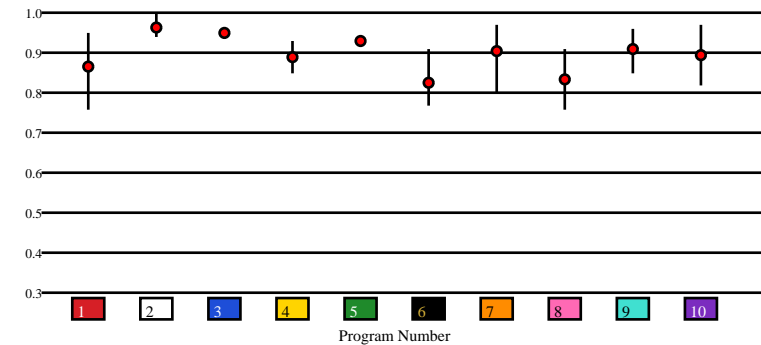
Speed # Edge (>=3)	SIM Odds		SIM Speed #		1st Call Leader		Early Pace		Late Pace		Total Pace	
7	2-1	2	95.4	2	11.1%	7	7	7	7	7	7	
2	4-1	7	93.3	7	10.5%	2	2	2	2	2	2	
10	6-1	9	90.1	3	10.4%	10	10	10	10	10	10	
3	10-1	3	89.4	4	10.3%	3	3	3	3	3	3	
1	12-1	5	89.2	5	10.2%	9	9	9	9	9	9	
5	13-1	10	88.7	9	10.0%	1	1	1	1	1	1	

**Pace / Improvement / Times**

No.	Horse	ML Odds	SIM Odds	PAR	PAR+	Early	Mid	Late	1/4	1/2	Class Move	Move by Lengths	1st Timer (3 Max)	Bullet & Go	Back Bullet	2nd Race Parability	Jockey Win	Jockey ITM	Trainer Win	Trainer ITM
1	JJ KISS	6-1	12-1	NO	0.0%												0.62	0.69	1.00	0.95
2	DK BONITA JESS	3-1	4-1	NO	0.0%												1.00	1.00	0.55	0.74
3	GET AGGRESSIVE	10-1	10-1	NO	0.0%												0.54	0.63	0.44	0.50
4	LIMITES SIN B	8-1	76-1	NO	0.0%												0.38	0.52	0.19	0.64
5	SOARING LARK 123	20-1	13-1	NO	0.0%												0.62	0.69	0.55	0.74
6	LET IT B COWGIRL	15-1	999-1	NO	0.0%												0.62	0.69	0.11	0.39
7	CORONAS FIRST COWBOY	4-1	2-1	NO	0.0%												0.83	0.72	0.31	0.51
8	DOT DOT DOT XO	12-1	110-1	NO	0.0%												0.68	0.72	0.38	1.00
9	CAJUNS 123	9/2	17-1	NO	0.0%												0.27	0.53	1.00	0.95
10	BAD BOY 123	8-1	6-1	NO	0.0%												0.62	0.69	1.00	0.95

No.	CZone %	E (CZ%)	EP (CZ%)	P (CZ%)	PC (CZ%)	C (CZ%)	ANY (CZ%)	N/A (CZ%)	1st
1	0.0%							1 (0.0%)	
2	0.0%							2 (0.0%)	
3	0.0%							3 (0.0%)	
4	0.0%							4 (0.0%)	
5	0.0%							5 (0.0%)	
6	0.0%							6 (0.0%)	
								7 (0.0%)	
								8 (0.0%)	
								9 (0.0%)	
								10 (0.0%)	

**SPEED CHART**



# SMART SHEETS

[Back to Race Summary](#)

## Data Guide & Structural Interpretation Framework

### DATA FOUNDATION

---

All Smart Sheets metrics are derived from up to the horse's 10 most recent races, where applicable. Calculations are structured to emphasize recent form, reflect demonstrated performance patterns, and reduce distortion from outdated efforts.

More recent races carry greater interpretive weight within projections and structural evaluations. This ensures current condition and form cycles are prioritized over distant historical performance.

### PERFORMANCE STANDARD

---

#### PAR (Race Standard)

PAR indicates whether a horse has previously run a speed figure equal to or greater than today's race standard.

Designations include:

**'YES'** – Has met or exceeded today's PAR

**'MAYBE'** -1 to -5 – Finished within 1 to 5 speed points of today's PAR

**'NO'** – Has not approached today's PAR level

The MAYBE designation identifies horses that have demonstrated competitive proximity without fully qualifying.

#### PAR+

PAR+ represents the percentage of simulations in which the horse meets or exceeds today's PAR standard. Higher percentages indicate more frequent projected competitiveness at today's performance level. PAR+ reflects projected probability rather than past qualification alone.

#### Performance Context

Approximately 5 Speed or Pace points equate to 1 length. This conversion provides scale when interpreting speed separation, PAR proximity, pace advantage, and structural positioning. Small numeric gaps may represent marginal positional differences, while larger separations may reflect more meaningful competitive distance.

## SPEED & VALUE STRUCTURE

---

### Speed # Edge (Minimum Threshold: 3 Points)

Speed # Edge highlights meaningful separation between projected top speed figures. An edge is recognized only when a horse holds a minimum 3-point advantage over the next highest projected figure.

Using the structural scale:

3 points ≈ slightly more than half a length

5 points ≈ approximately 1 length

This threshold filters out normal figure variance and isolates measurable separation.

### SIM Odds

SIM Odds represent fair-value odds derived from simulation probability. They reflect the model's internal estimate of each horse's likelihood of winning relative to the field.

When compared to Morning Line or live wagering odds, differences between projected probability and market pricing may help identify potential mispricing or value discrepancies.

Smart Sheets does not make wagering recommendations. SIM Odds provide a structured framework for evaluating probability versus price.

### SIM Speed #

SIM Speed is a projected performance figure generated from race simulations. It estimates how fast the horse is expected to run today under modeled pace and race-flow conditions. The number is most useful when evaluated relative to the field rather than in isolation.

### Speed Chart

The Speed Chart visually displays each horse's recent speed range:

'**Top**' of line – Maximum figure

'**Bottom**' of line – Minimum figure

'**Red Dot**' – Average figure

This allows evaluation of ceiling, floor, consistency, and volatility.

## PACE PROJECTIONS

---

### 1st Call Leader Projection

This metric estimates the likelihood a horse will be on the lead at the first call. It helps define projected early race structure and potential pace pressure.

### Early & Late Pace

These columns reflect performance strength in the front half and finishing phase of the race. Evaluating these collectively helps visualize projected race flow and potential positional advantages.

### Total Pace

Total Pace represents combined early and late performance strength. Separation within this column may indicate in-race structural advantage when evaluated relative to the field.

## POSITIONAL PROFILE

---

### C-Zone (Comfort Zone)

C-Zone measures how closely today's projected race conditions align with the pace environment under which the horse produced its best competitive finish. It evaluates race fit rather than raw speed. Higher percentages indicate stronger alignment between projected structure and demonstrated success conditions.

### Pace View

Pace View categorizes horses based on positional tendencies during competitive finishes.

'E' – Front-runner

'EP' – Lead or press

'P' – Tactical stalker

'PC' – Versatile stalker/closer

'C' – Closer

'ANY' – Demonstrated multiple effective styles

'N/A' – No competitive finish within 5 lengths

'1st' – First-time starter

The percentage displayed next to each horse represents its C-Zone score, combining positional tendency with projected structural fit.

## DEVELOPMENT & MOVEMENT SIGNALS

---

### **Class Move**

Indicates whether a horse is moving up in class, moving down in class, or remaining at a similar level. Class shifts may influence competitive positioning within today's race structure.

### **First-Time Starter Rank**

Ranks debut runners using internal evaluation metrics for comparison within the field. The maximum First-Time Starter score is 3, representing the strongest relative rating among debut runners in the race.

### **Workout Indicators**

Bullet / Bullet & Go indicators reflect strong recent workouts relative to the field and may signal preparation sharpness.

### **2nd Race Parability**

Applies to lightly raced horses making their second start. Indicates whether projected development meets or exceeds today's PAR standard.

This metric may carry increased relevance when few or no horses have previously met today's PAR threshold.

## CONNECTION STRENGTH

---

Jockey and Trainer ratings are scaled within the field and color-coded to reflect relative strength.

## COLOR FORMATTING & STRUCTURAL EDGE IDENTIFICATION

---

Smart Sheets uses color formatting and structured layout to visually identify potential structural advantages, including meaningful speed separation, PAR qualification or proximity, projected pace leadership, connection strength, and simulation pricing disparities.

Interpretation of how these elements interact remains the responsibility of the user.

## DISCLAIMER

---

Smart Sheets data is compiled using information derived from reputable industry sources and publicly available racing data. All data is used in good faith and presented for informational and educational purposes. While every effort is made to ensure accuracy and completeness, errors, omissions, or data inconsistencies may occur and are unintended.

Smart Sheets is a decision-support tool and does not guarantee outcomes.

## RESPONSIBLE WAGERING NOTICE

---

Horse racing wagering involves financial risk. Users should never wager more than they can afford to lose. If you cannot afford to lose anything, you should not gamble.

If you believe you may have a gambling problem, seek assistance immediately through a licensed professional or recognized responsible gaming organization.

All wagering decisions are solely the responsibility of the user.