



**See the Edge in Every Race**  
**HORSESHOE INDIANAPOLIS 06/04/2026**

How to Use Smart Sheets → <https://horseracingtoday.net/wp-content/uploads/2026/03/HRTSmartSheetsExplanations.pdf>

Race	Distance	Surface	Race Type	Purse
<a href="#">Race 1</a>	6 Furlongs	Dirt	Allowance	\$46,240
<a href="#">Race 2</a>	1 1/16 Miles	Dirt	Allowance	\$41,000
<a href="#">Race 3</a>	6 Furlongs	Dirt	Allowance Optional Claiming	\$49,680
<a href="#">Race 4</a>	6 Furlongs	Dirt	Allowance	\$46,240
<a href="#">Race 5</a>	1 1/16 Miles	Turf	Maiden Claiming	\$35,360
<a href="#">Race 6</a>	1 Mile	Turf	Claiming	\$23,800
<a href="#">Race 7</a>	1 Mile	Dirt	Claiming	\$18,500
<a href="#">Race 8</a>	1 Mile	Turf	Maiden Claiming	\$23,800
<a href="#">Race 9</a>	5 1/2 Furlongs	Dirt	Maiden Special Weight	\$36,000
<a href="#">Race 10</a>	1 Mile	Turf	Allowance	\$38,000
<a href="#">Race 11</a>	330 Yards	Dirt	Maiden Special Weight	\$17,000
<a href="#">Race 12</a>	250 Yards	Dirt	Maiden Special Weight	\$17,000
<a href="#">Appendix</a>			Smart Sheets Reference Guide	

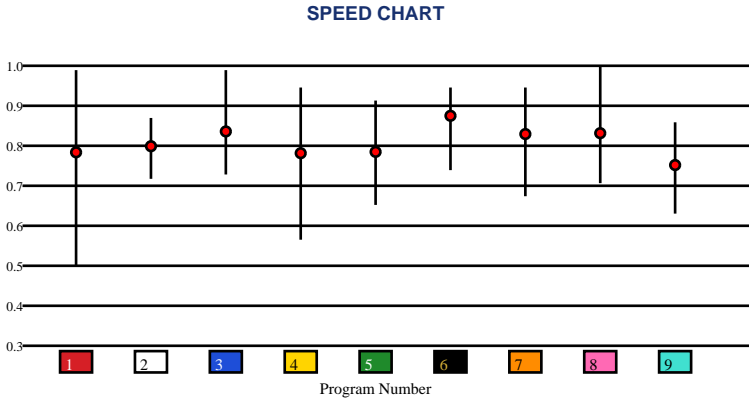


# HORSESHOE INDIANAPOLIS | 06/04/2026 | Race 1 | 6 Furlongs | Dirt | Allowance | Purse: \$46,240

Speed # Edge (>=3)		SIM Odds		SIM Speed #		1st Call Leader		Early Pace		Late Pace		Total Pace	
1	11	1	2-1	6	83.5	1	33.6%	1	93.3	7	83.0	6	175.3
		3	4-1	3	81.8	3	17.8%	6	92.7	6	82.7	7	171.0
		6	4-1	1	80.5	7	17.2%	3	89.0	8	81.0	3	168.3
		7	6-1	7	80.5	6	16.2%	7	88.0	3	79.3	8	160.3
		8	7-1	8	77.2	9	12.6%	9	86.0	4	77.7	9	160.0
		4	32-1	2	74.6	5	1.8%	5	82.0	9	74.0	1	159.3

Pace / Improvement / Times																				
No.	Horse	ML Odds	SIM Odds	PAR	PAR+	Early	Mid	Late	1/4	1/2	Class Move	Move by Lengths	1st Timer (3 Max)	Bullet & Go	Back Bullet	2nd Race Parability	Jockey Win	Jockey ITM	Trainer Win	Trainer ITM
1	GOLDWYN	7/2	2-1	YES	32.5%			▲			▲	0.8					0.42	0.89	1.00	1.00
2	SIR BAHJY	8-1	166-1	NO	0.0%						→	0.0					0.72	1.00	0.88	0.93
3	SLEEPY	3-1	4-1	YES	25.0%						▲	1.2					0.79	0.98	1.00	1.00
4	ME AND CHILI	12-1	32-1	MAYBE -3	0.8%		▲	▲			▲	2.2					1.00	0.97	0.84	0.42
5	ICE EXPRESS	15-1	1001-1	NO	0.0%	▲	▲				▲	1.4					0.21	0.33	0.84	0.42
6	KING GERALD	5-1	4-1	MAYBE -3	22.8%						▲	0.6					0.74	1.00	0.53	0.90
7	SIR GALLIVANT	6-1	6-1	MAYBE -3	16.2%			▲			→	0.0					0.60	0.85	1.00	1.00
8	JIMMY RULES	8-1	7-1	YES	16.3%						→	0.0					0.74	0.67	0.53	0.60
9	HOT DAYS AHEAD	15-1	166-1	NO	0.0%	▲	▲	▲		▲	▲	1.8					0.81	0.96	0.98	0.87

No.	CZone %	E (CZ%)	EP (CZ%)	P (CZ%)	PC (CZ%)	C (CZ%)	ANY (CZ%)	N/A (CZ%)	1st
2	90.3%	1 (39.8%)	3 (33.4%)	6 (30.6%)	2 (90.3%)	4 (2.1%)			
7	45.4%			8 (3.0%)	7 (45.4%)	5 (3.4%)			
1	39.8%					9 (9.5%)			
3	33.4%								
6	30.6%								
9	9.5%								



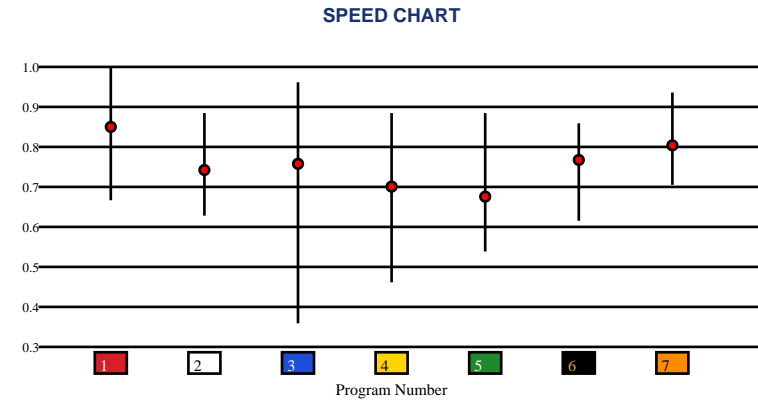


# HORSESHOE INDIANAPOLIS | 06/04/2026 | Race 2 | 1 1/16 Miles | Dirt | Allowance | Purse: \$41,000

Speed # Edge (>=3)	SIM Odds		SIM Speed #		1st Call Leader		Early Pace		Late Pace		Total Pace	
3	6/5	3	68.1	4	30.8%	4	84.0	3	83.0	3	160.0 (+6)	
1	5-1	7	64.2	2	23.3%	7	81.3	6	79.0	6	154.0	
4	5-1	6	63.3	5	15.8%	5	77.3	1	75.7	4	153.7	
7	7-1	1	63.3	7	15.6%	3	77.0	7	70.7	7	152.0	
6	9-1	4	54.8	6	7.9%	6	75.0	4	69.7	1	147.3	
2	76-1	2	54.7	3	5.0%	2	74.3	5	66.7	5	144.0	

Pace / Improvement / Times																				
No.	Horse	ML Odds	SIM Odds	PAR	PAR+	Early	Mid	Late	1/4	1/2	Class Move	Move by Lengths	1st Timer (3 Max)	Bullet & Go	Back Bullet	2nd Race Parability	Jockey Win	Jockey ITM	Trainer Win	Trainer ITM
1	PARKER	6-1	5-1	YES	14.8%						▼	-0.4					0.29	0.32	0.93	0.30
2	MYSTERY IMPACT	20-1	76-1	MAYBE -4	0.0%			▲			→	0.0					1.00	0.99	0.93	0.26
3	GOTANOTIONTODRINK	7/5	6/5	YES	41.3%						→	0.0					0.59	0.88	0.81	0.71
4	STAR PROMISE	8-1	5-1	MAYBE -4	17.6%		▲	▲			▼	-0.4					0.93	1.00	0.93	0.71
5	MI SARGENTO	15-1	499-1	MAYBE -4	0.0%						▲	1.8					0.77	0.80	0.90	1.00
6	FOUR STAR GENERAL	9/2	9-1	NO	7.9%						→	0.0					0.83	0.84	1.00	0.73
7	POLAR DRIFT	5/2	7-1	YES	12.5%			▲			→	0.0					0.78	0.92	1.00	0.73

No.	CZone %	E (CZ%)	EP (CZ%)	P (CZ%)	PC (CZ%)	C (CZ%)	ANY (CZ%)	N/A (CZ%)	1st
2	25.6%			3 (11.7%)		1 (0.0%)		4 (8.1%)	
7	19.3%			5 (10.4%)		2 (25.6%)		6 (10.0%)	
3	11.7%			7 (19.3%)					
5	10.4%								
6	10.0%								
4	8.1%								



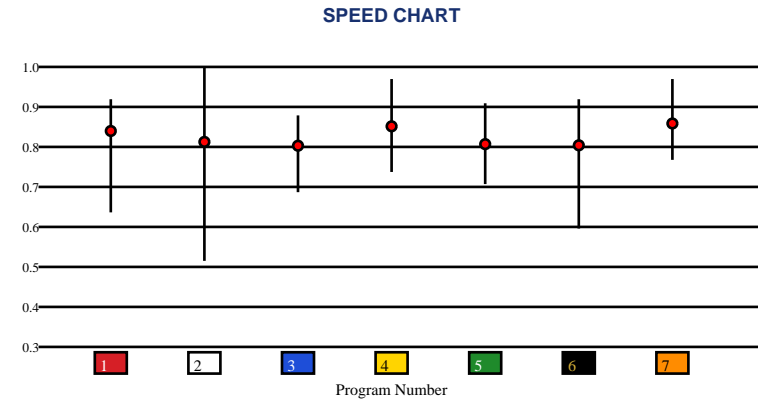


HORSESHOE INDIANAPOLIS | 06/04/2026 | Race 3 | 6 Furlongs | Dirt | Allowance Optional Claiming | Purse: \$49,680

Speed # Edge (>=3)	SIM Odds	SIM Speed #	1st Call Leader	Early Pace	Late Pace	Total Pace
1	2-1	1 88.8	1 39.6%	1 94.3	1 87.0	1 181.3
2	3-1	4 86.4	5 27.9%	5 91.3	5 86.0	5 177.3
5	5-1	5 85.5	4 17.6%	4 91.3	4 85.3	4 176.7
4	6-1	2 81.1	2 8.5%	2 87.7	3 85.3	3 168.7
6	19-1	7 79.9	3 2.8%	7 84.3	7 84.3	7 168.7
7	22-1	3 79.0	7 2.4%	3 83.3	2 79.0	2 166.7

Pace / Improvement / Times																				
No.	Horse	ML Odds	SIM Odds	PAR	PAR+	Early	Mid	Late	1/4	1/2	Class Move	Move by Lengths	1st Timer (3 Max)	Bullet & Go	Back Bullet	2nd Race Parability	Jockey Win	Jockey ITM	Trainer Win	Trainer ITM
1	DAWN AT NORMANDY	4-1	2-1	YES	49.7%	▲			▲	▲	▼	-0.2					1.00	0.97	1.00	1.00
2	RED STATE	3-1	3-1	YES	36.2%	▲	▲		▲	▲	▼	-1.2					0.93	0.96	0.39	0.76
3	CUPID'S RUNAWAY	6-1	62-1	MAYBE -2	5.5%	▲	▲		▲	▲	▲	1.0					0.77	0.77	0.40	0.78
4	INVICTUS	7/2	6-1	YES	39.7%			▲			▼	-0.2					0.45	0.62	0.46	0.94
5	SHIP SHIP HOORAY	5-1	5-1	YES	39.0%						→	0.0					0.79	1.00	0.23	0.98
6	SURLY FURIOUS	6-1	19-1	YES	15.3%			▲			▼	-1.6					0.62	0.63	0.23	0.51
7	LATIGO	8-1	22-1	YES	16.5%			▲			▲	1.0					0.50	0.88	0.40	0.78

No.	CZone %	E (CZ%)	EP (CZ%)	P (CZ%)	PC (CZ%)	C (CZ%)	ANY (CZ%)	N/A (CZ%)	1st
3	85.2%		2 (44.2%)			6 (13.7%)	1 (83.4%)		
1	83.4%		4 (19.9%)				3 (85.2%)		
5	61.3%		5 (61.3%)				7 (60.2%)		
7	60.2%								
2	44.2%								
4	19.9%								



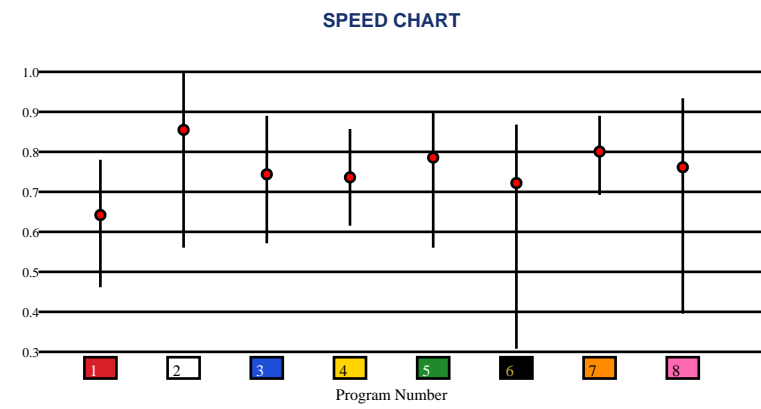


# HORSESHOE INDIANAPOLIS | 06/04/2026 | Race 4 | 6 Furlongs | Dirt | Allowance | Purse: \$46,240

Speed # Edge (>=3)		SIM Odds		SIM Speed #		1st Call Leader		Early Pace		Late Pace		Total Pace	
2	6	2	7/5	2	85.5 (+8)	6	35.5%	6	92.3	2	85.0	2	176.7 (+7)
		6	5/2	6	77.9	2	21.3%	2	91.7	3	82.7	3	170.0
		5	11-1	7	75.9	8	10.2%	7	90.3	5	79.0	6	168.7
		3	14-1	5	74.5	5	10.2%	8	89.3	6	76.3	5	166.3
		7	15-1	3	72.0	7	9.0%	3	87.3	4	75.5	7	164.7
		4	26-1	4	66.9	3	8.3%	5	87.3	7	74.3	4	161.0

Pace / Improvement / Times																				
No.	Horse	ML Odds	SIM Odds	PAR	PAR+	Early	Mid	Late	1/4	1/2	Class Move	Move by Lengths	1st Timer (3 Max)	Bullet & Go	Back Bullet	2nd Race Parability	Jockey Win	Jockey ITM	Trainer Win	Trainer ITM
1	MESCAT	20-1	58-1	NO	0.0%						▲	1.4					0.74	0.80	0.86	0.63
2	SWEET SCORECARD	9/5	7/5	YES	48.1%	▲	▲		▲		▲	0.2					0.90	1.00	0.77	0.85
3	CITY PRAYERS	5-1	14-1	MAYBE -5	10.5%	▲	▲	▲	▲	▲	▲	1.8					1.00	0.88	1.00	0.97
4	STEPHENS DREAM	10-1	26-1	NO	6.5%	▲	▲	▲	▲	▲	▲	2.8					0.70	0.93	0.43	0.63
5	DEVIL OF PARADIS	8-1	11-1	MAYBE -4	17.7%	▲	▲		▲	▲	→	0.0					0.51	0.73	0.78	1.00
6	MOMENTARIO	6-1	5/2	NO	36.0%			▲			▲	1.4					0.53	0.64	1.00	0.97
7	DAME GINA MARIE	9/2	15-1	MAYBE -5	8.3%		▲	▲	▲	▲	▲	2.2					0.96	0.99	0.53	0.88
8	VIRAL PLANE LADY	6-1	42-1	MAYBE -1	3.5%						▲	0.8					0.98	0.99	0.80	0.94

No.	CZone %	E (CZ%)	EP (CZ%)	P (CZ%)	PC (CZ%)	C (CZ%)	ANY (CZ%)	N/A (CZ%)	1st
5	85.6%	6 (42.8%)	2 (46.3%)	4 (11.7%)		1 (12.4%)	3 (72.4%)		
3	72.4%	8 (16.9%)	7 (37.2%)				5 (85.6%)		
2	46.3%								
6	42.8%								
7	37.2%								
8	16.9%								



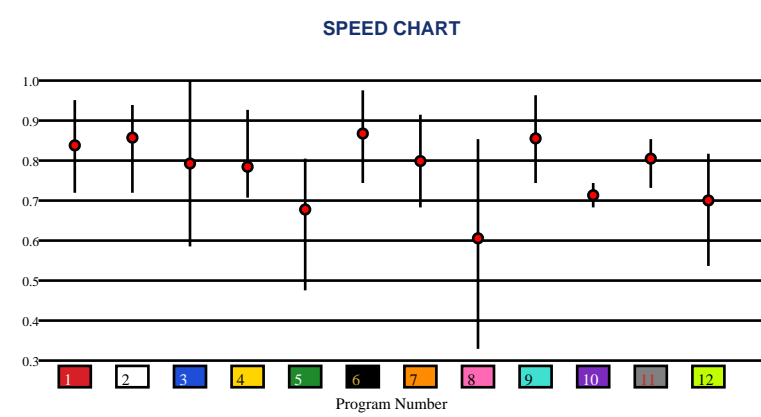


# HORSESHOE INDIANAPOLIS | 06/04/2026 | Race 5 | 1 1/16 Miles | Turf | Maiden Claiming | Purse: \$35,360

Speed # Edge (>=3)	SIM Odds		SIM Speed #		1st Call Leader		Early Pace		Late Pace		Total Pace	
1	4-1	1	71.1	6	26.2%	5	86.3	7	79.5	6	156.3	
6	4-1	6	70.8	8	24.3%	12	86.0	2	78.0	7	156.0	
7	5-1	2	70.5	5	19.7%	6	85.3	9	75.3	12	153.7	
2	10-1	9	69.3	12	15.3%	1	85.3	11	74.7	9	153.3	
9	10-1	11	66.0	1	6.5%	8	85.0	6	71.0	2	148.7	
4	11-1	7	65.9	4	3.9%	4	80.3	12	67.7	5	146.0	

Pace / Improvement / Times																				
No.	Horse	ML Odds	SIM Odds	PAR	PAR+	Early	Mid	Late	1/4	1/2	Class Move	Move by Lengths	1st Timer (3 Max)	Bullet & Go	Back Bullet	2nd Race Parability	Jockey Win	Jockey ITM	Trainer Win	Trainer ITM
1	UNDERAPPRECIATED	8-1	4-1	YES	29.5%	▲	▲				▼	-1.4					0.87	0.99	0.67	0.59
2	TURNBUCKLE	10-1	10-1	YES	23.2%	▲		▲	▲		▼	-0.2					0.96	0.95	0.42	0.73
3	RUN FORREST RUN	15-1	23-1	YES	8.9%												0.65	0.80	0.60	0.56
4	MO CAN DANCE	10-1	11-1	YES	17.0%						▲	0.2					0.67	0.92	0.52	0.33
5	SENROR VALENTINE	12-1	24-1	NO	10.7%		▲	▲	▲	▲	▼	-0.6					0.61	0.93	0.74	0.40
6	HE'S A CHARMER	5/2	4-1	YES	28.6%			▲	▲	▲	→	0.0					0.85	0.99	0.52	0.33
7	JR BARTHOLOMEW	12-1	5-1	MAYBE -1	23.0%						▼	-1.0					0.88	0.88	0.74	0.40
8	GOLDEN RULE	10-1	13-1	NO	11.9%	▲	▲		▲	▲	▼	-0.4					0.12	0.50	0.33	0.56
9	THE FED'S PLOT	4-1	10-1	YES	17.6%			▲		▲	→	0.0					0.79	1.00	0.52	1.00
10	QUIET MISCHIEF	20-1	1001-1	NO	0.0%	▲	▲				▼	-1.8					1.00	0.97	0.40	0.56
11	LORD RIPLEY	15-1	142-1	NO	0.0%						▲	1.0					0.45	0.73	1.00	0.71
12	CHATTERFIELD	30-1	142-1	NO	3.2%			▲			▼	-1.0					0.93	0.96	0.74	0.60

No.	CZone %	E (CZ%)	EP (CZ%)	P (CZ%)	PC (CZ%)	C (CZ%)	ANY (CZ%)	N/A (CZ%)	1st
6	55.6%	1 (11.5%)	6 (55.6%)			2 (9.6%)		7 (0.0%)	
11	17.0%					3 (1.8%)		8 (11.0%)	
5	16.0%					4 (11.0%)		10 (14.1%)	
9	14.2%					5 (16.0%)		12 (12.5%)	
10	14.1%					9 (14.2%)			
12	12.5%					11 (17.0%)			



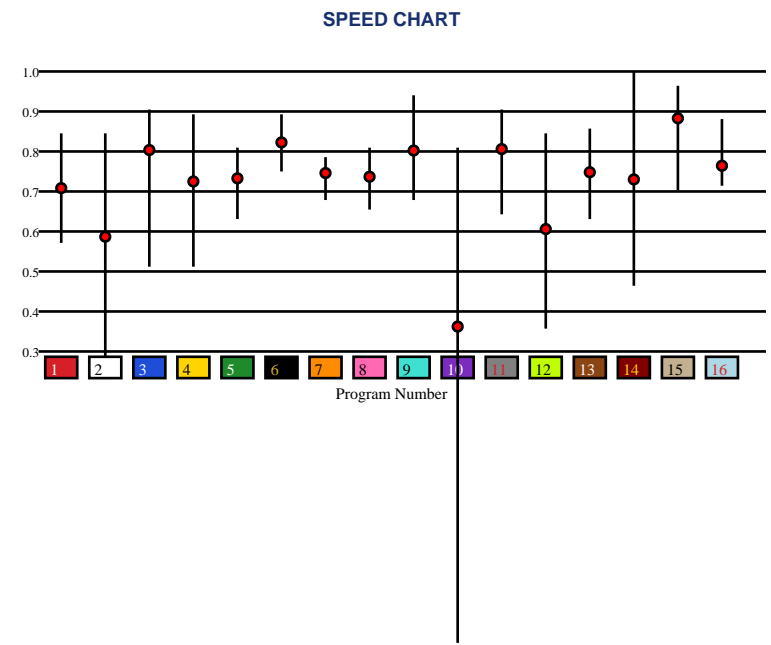


# HORSESHOE INDIANAPOLIS | 06/04/2026 | Race 6 | 1 Mile | Turf | Claiming | Purse: \$23,800

Speed # Edge (>=3)		SIM Odds		SIM Speed #		1st Call Leader		Early Pace		Late Pace		Total Pace	
3	5	3	3-1	3	72.0	7	26.8%	7	89.3	3	80.7	3	155.3
		10	7/2	15	70.6	10	22.6%	8	85.0	11	79.0	11	153.3
		15	4-1	11	70.4	16	17.2%	10	84.7	5	78.7	7	152.3
		11	5-1	6	67.1	8	11.0%	14	82.3	4	75.0	6	151.7
		14	20-1	16	66.2	15	9.5%	13	81.7	9	71.3	16	149.3
		6	31-1	8	64.1	6	6.6%	2	81.3	16	70.3	15	149.0

Pace / Improvement / Times																				
No.	Horse	ML Odds	SIM Odds	PAR	PAR+	Early	Mid	Late	1/4	1/2	Class Move	Move by Lengths	1st Timer (3 Max)	Bullet & Go	Back Bullet	2nd Race Parability	Jockey Win	Jockey ITM	Trainer Win	Trainer ITM
1	FAWN LIEBOWITZ	30-1	1001-1	YES	0.0%			▲			→	0.0					0.21	0.32	0.10	0.37
2	RUN MAMA RUN	15-1	82-1	YES	9.9%	▲		▲	▲		▲	0.4					0.80	0.73	0.29	0.71
3	FASHION AFFIRMED	4-1	3-1	YES	53.2%				▲		▼	-1.0					0.74	0.99	0.16	0.36
4	FIFTH WHEEL	12-1	166-1	YES	9.6%	▲		▲	▲	▲	▲	1.4					0.60	0.84	0.20	0.67
5	CROWNED WITH GRACE	10-1	999-1	MAYBE -3	0.0%			▲		▲	▲	0.6					0.67	1.00	0.46	0.77
6	DON'T LOOK BACK	7/2	31-1	YES	27.2%		▲	▲			▼	-1.4					0.75	0.88	1.00	1.00
7	JUSTIFIABLE STEEL	20-1	999-1	MAYBE -5	0.0%	▲	▲		▲	▲	▲	0.4					0.79	0.96	0.43	0.69
8	SHE'S THAT GIRL	9/2	166-1	MAYBE -3	5.9%	▲	▲		▲		▼	-0.2					0.72	0.99	0.31	0.45
9	CHOATE	8-1	124-1	YES	12.0%	▲					→	0.0					0.42	0.88	0.20	0.60
10	BOLT BAYOU	30-1	7/2	MAYBE -3	29.0%	▲		▲	▲	▲	▲	1.8					0.85	0.97	0.32	0.75
11	PARKING LOT POURS	6-1	5-1	YES	47.6%				▲		▼	-0.2					1.00	0.96	0.30	0.87
12	FLIRTIN AGAIN	30-1	76-1	YES	12.0%	▲	▲		▲	▲	→	0.0					0.52	0.93	0.17	0.50
13	LONG TAIL SALLY (MTO)	15-1	199-1	YES	0.9%			▲			▲	0.6					0.74	0.66	0.21	0.47
14	TRAJECT (AE)	30-1	20-1	YES	20.4%	▲	▲		▲	▲	▼	-1.4					0.24	0.35	0.14	0.55
15	NEVER REALLY KNOW (AE)	3-1	4-1	YES	48.0%	▲	▲				▼	-1.0					0.10	0.50	0.41	0.71
16	MCKINZIE RIVER (AE)	8-1	58-1	YES	25.6%	▲	▲				▼	-1.4					0.81	0.95	0.43	0.69

No.	CZone %	E (CZ%)	EP (CZ%)	P (CZ%)	PC (CZ%)	C (CZ%)	ANY (CZ%)	N/A (CZ%)	1st
8	53.4%	6 (11.8%)	8 (53.4%)	12 (6.3%)		1 (0.5%)			
9	37.2%	7 (36.3%)				2 (0.0%)			
7	36.3%	13 (2.6%)				3 (12.4%)			
11	20.1%	14 (7.1%)				4 (7.0%)			
15	14.1%	15 (14.1%)				5 (0.3%)			
3	12.4%					9 (37.2%)			
						10 (0.4%)			
						11 (20.1%)			
						16 (9.0%)			

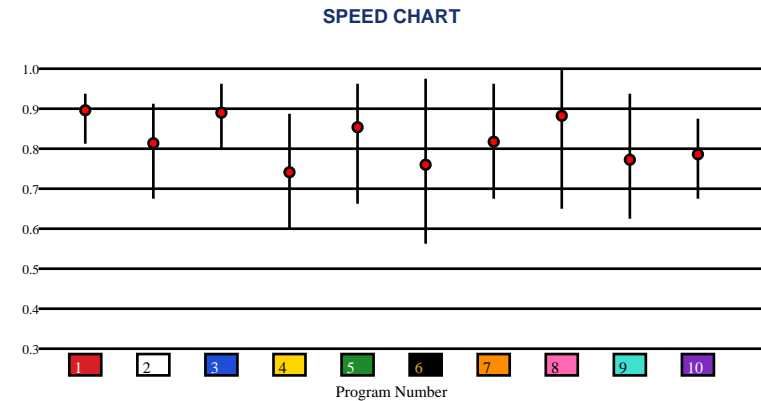


# HORSESHOE INDIANAPOLIS | 06/04/2026 | Race 7 | 1 Mile | Dirt | Claiming | Purse: \$18,500

Speed # Edge (>=3)		SIM Odds		SIM Speed #		1st Call Leader		Early Pace		Late Pace		Total Pace	
8	3	5	2-1	5	74.3	7	26.8%	8	85.7	1	81.7	9	160.0
		6	5-1	3	72.5	8	26.5%	7	83.3	5	81.3	1	156.3
		9	6-1	9	69.6	6	18.6%	6	82.0	9	79.7	3	154.3
		3	7-1	6	69.0	2	7.8%	9	80.3	4	77.3	6	154.0
		8	9-1	1	68.6	10	6.9%	10	79.0	3	76.7	5	153.3
		7	18-1	2	68.2	9	6.7%	3	77.7	10	72.3	7	152.3

Pace / Improvement / Times																				
No.	Horse	ML Odds	SIM Odds	PAR	PAR+	Early	Mid	Late	1/4	1/2	Class Move	Move by Lengths	1st Timer (3 Max)	Bullet & Go	Back Bullet	2nd Race Parability	Jockey Win	Jockey ITM	Trainer Win	Trainer ITM
1	EL MICHOACANO	9/2	62-1	YES	0.0%			▲	▲	▲	▼	-1.2					1.00	0.97	0.63	0.60
2	EASE MY MIND	6-1	19-1	MAYBE -2	20.3%						▼	-0.6					0.47	0.64	0.87	0.81
3	DREAMING BRO	4-1	7-1	YES	36.1%			▲	▲	▲	▼	-0.6					0.93	0.96	0.32	0.74
4	GIMMEL	20-1	199-1	MAYBE -4	2.3%						▲	0.4					0.50	0.88	0.40	0.57
5	NINE QUESTIONS	8-1	2-1	YES	48.0%						▼	-1.8					0.71	0.84	0.46	0.73
6	CRAB CRUNCH	10-1	5-1	YES	32.5%						▲	0.6					0.87	0.99	0.29	0.61
7	COW CREEK KID	8-1	18-1	YES	21.7%						▼	-0.2					0.45	0.73	0.93	0.73
8	HENRY THE HANK	5-1	9-1	YES	25.7%		▲				▼	-0.6					0.96	0.95	0.40	1.00
9	BENNY'S DAY	10-1	6-1	YES	29.1%						▲	0.2					0.67	0.92	0.32	0.74
10	HOUSE OF GOLD	15-1	499-1	MAYBE -5	0.0%			▲			▲	1.4					0.79	1.00	1.00	0.81

No.	CZone %	E (CZ%)	EP (CZ%)	P (CZ%)	PC (CZ%)	C (CZ%)	ANY (CZ%)	N/A (CZ%)	1st
10	48.5%	2 (0.0%)	6 (34.7%)	8 (16.6%)		1 (0.0%)	10 (48.5%)		
9	36.1%		7 (34.9%)	9 (36.1%)		3 (10.1%)			
7	34.9%					4 (11.7%)			
6	34.7%					5 (0.4%)			
8	16.6%								
4	11.7%								



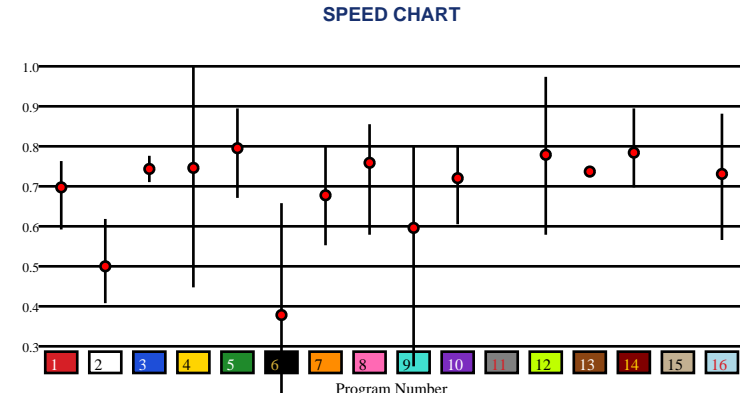


# HORSESHOE INDIANAPOLIS | 06/04/2026 | Race 8 | 1 Mile | Turf | Maiden Claiming | Purse: \$23,800

Speed # Edge (>=3)		SIM Odds		SIM Speed #		1st Call Leader		Early Pace		Late Pace		Total Pace	
14	3	12	5/2	14	62.8	16	36.6%	16	86.7 (+5)	14	74.0	7	154.3
		14	5-1	12	62.2	7	17.4%	7	81.3	8	73.3	8	150.3
		4	5-1	8	60.2	3	8.2%	3	80.5	7	73.0	14	148.7
		8	5-1	5	59.7	12	7.7%	1	79.7	12	69.0	12	148.7
		5	15-1	3	56.5	10	6.5%	12	79.7	3	66.0	16	148.3
		16	15-1	4	54.9	8	6.4%	10	77.7	5	66.0	3	146.5

Pace / Improvement / Times																				
No.	Horse	ML Odds	SIM Odds	PAR	PAR+	Early	Mid	Late	1/4	1/2	Class Move	Move by Lengths	1st Timer (3 Max)	Bullet & Go	Back Bullet	2nd Race Parability	Jockey Win	Jockey ITM	Trainer Win	Trainer ITM
1	FETCHMYDIAMONDS	15-1	999-1	NO	0.0%						▼	-1.0					0.88	0.82	0.37	0.47
2	AMY EL	30-1	1001-1	NO	0.0%	▲	▲	▲	▲	▲	▲	0.8					0.54	0.78	0.37	0.38
3	START HER UP	12-1	499-1	NO	0.0%			▲			▼	-2.4					0.54	0.54	1.00	0.92
4	SILENT SECRETARY	4-1	5-1	YES	24.4%						▲	0.2					0.82	0.81	0.58	0.60
5	DENISE SAYS NO	9/2	15-1	YES	12.6%			▲			▼	-1.0					0.46	1.00	0.28	0.41
6	LO MACHAR	30-1	76-1	NO	2.3%	▲			▲		▲	0.8					0.44	0.74	0.18	0.50
7	CRAB RANGOON	6-1	142-1	NO	0.0%			▲	▲	▲	▼	-0.4					0.62	0.71	0.31	0.69
8	HIGH DOLLAR DOLLY	6-1	5-1	MAYBE -2	26.6%			▲			▼	-0.2					0.41	0.54	0.06	0.50
9	TEMPEST JILL	30-1	1001-1	NO	0.0%						▲	1.0					0.39	0.62	0.31	0.36
10	LE BIEN LE MAL	30-1	1001-1	NO	0.0%	▲					▼	-0.2					0.57	0.67	0.43	1.00
11	FANTASTIC HOPE	8-1	124-1	NO	1.6%								2.25				0.21	0.27	0.28	0.72
12	DAPHNE BREWNETTE	5-1	5/2	YES	37.8%	▲	▲	▲	▲	▲	▼	-0.2					0.77	0.74	0.34	0.54
13	I AM SO BAD (AE)	10-1	70-1	NO	1.0%						▼	-1.0				69	0.74	0.83	0.37	0.54
14	ARGENTINIDAD (AE)	7/2	5-1	YES	29.2%	▲	▲		▲	▲	▼	-1.0					0.17	0.41	0.37	0.25
15	HOME SWEET HOME (AE)	15-1	58-1	NO	1.6%								2.33				1.00	0.68	0.32	0.44
16	OONDIRI (AE)	20-1	15-1	YES	14.1%			▲		▲	▲	0.6					0.54	0.78	0.37	0.30

No.	CZone %	E (CZ%)	EP (CZ%)	P (CZ%)	PC (CZ%)	C (CZ%)	ANY (CZ%)	N/A (CZ%)	1st
4	23.4%			16 (15.2%)	4 (23.4%)	2 (13.1%)		1 (0.2%)	11
5	17.8%				5 (17.8%)	7 (0.0%)		3 (0.0%)	15
16	15.2%					8 (2.0%)		6 (11.1%)	
2	13.1%					9 (0.0%)		13 (12.3%)	
13	12.3%					10 (0.0%)			
12	12.2%					12 (12.2%)			
						14 (0.0%)			



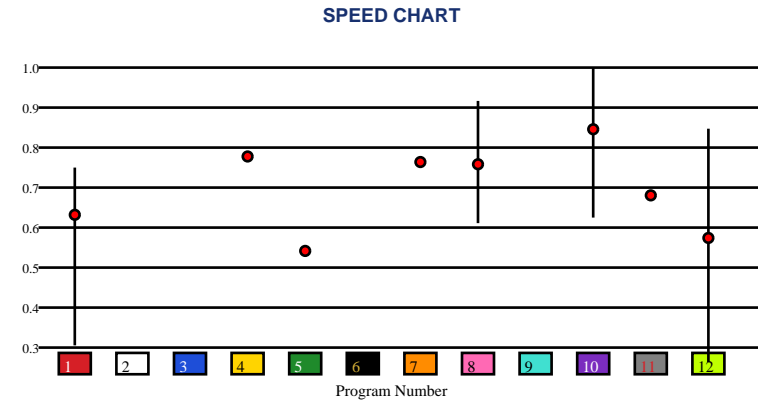


HORSESHOE INDIANAPOLIS | 06/04/2026 | Race 9 | 5 1/2 Furlongs | Dirt | Maiden Special Weight | Purse: \$36,000

Speed # Edge (>=3)		SIM Odds		SIM Speed #		1st Call Leader		Early Pace		Late Pace		Total Pace	
10	10	10	2-1	10	63.2	10	41.1%	10	95.0	7	71.5	10	158.7 (+10)
		8	5-1	8	60.3	5	23.6%	5	93.0	8	67.0	7	149.0
		11	13-1	7	55.0	4	20.6%	4	92.0	10	63.7	4	148.0
		9	14-1	2	55.0	1	6.0%	1	89.3	12	57.0	8	147.0
		5	16-1	11	54.8	8	2.0%	11	84.0	11	57.0	1	143.3
		12	17-1	9	54.7	6	1.8%	12	80.3	4	56.0	11	141.0

Pace / Improvement / Times																				
No.	Horse	ML Odds	SIM Odds	PAR	PAR+	Early	Mid	Late	1/4	1/2	Class Move	Move by Lengths	1st Timer (3 Max)	Bullet & Go	Back Bullet	2nd Race Parability	Jockey Win	Jockey ITM	Trainer Win	Trainer ITM
1	RAIZONETTE	6-1	18-1	NO	11.9%						▲	0.2					0.44	1.00	0.55	0.12
2	LEXIE'S LUNAR ROCK	20-1	17-1	NO	14.6%								2.66	✓			0.52	0.78	0.62	1.00
3	JIDDY GO	8-1	20-1	NO	12.8%								2.58				0.81	0.80	0.45	0.87
4	EASY EFFORT	5-1	19-1	NO	14.7%						→	0.0				69	0.38	0.62	0.64	0.85
5	CORGIS AND COWS	12-1	16-1	NO	15.2%						→	0.0					0.97	0.68	0.60	0.95
6	LITIBU	20-1	18-1	NO	14.6%								2.33				0.17	0.41	0.41	0.59
7	RUMORS ARE FLYING	15-1	999-1	NO	0.0%						▲	0.2					0.65	0.65	0.67	0.80
8	CAPTURED	8-1	5-1	MAYBE -1	29.8%						▲	1.0					0.63	0.32	0.55	0.78
9	LITTLE D	15-1	14-1	NO	15.6%								2.67		✓		0.79	0.81	1.00	1.00
10	NO SELF CONTROL	4-1	2-1	YES	41.1%			▲			▼	-1.4					0.74	0.83	0.20	0.71
11	GONE TO FAR	12-1	13-1	NO	14.8%						→	0.0					0.42	0.74	0.60	0.95
12	FLUTTERBY ZOEY	10-1	17-1	NO	11.3%						▲	1.2					1.00	0.81	0.30	0.73

No.	CZone %	E (CZ%)	EP (CZ%)	P (CZ%)	PC (CZ%)	C (CZ%)	ANY (CZ%)	N/A (CZ%)	1st
4	22.1%			10 (15.2%)		8 (12.2%)		1 (13.7%)	2
5	16.4%			12 (0.2%)				4 (22.1%)	3
10	15.2%							5 (16.4%)	6
1	13.7%							7 (13.2%)	9
7	13.2%							11 (1.1%)	
8	12.2%								



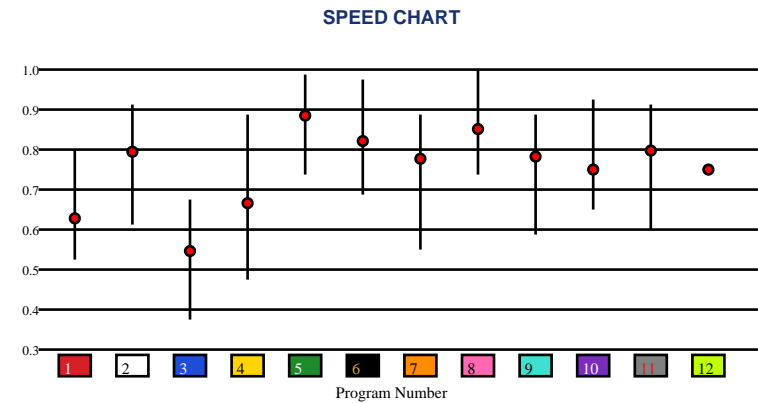


# HORSESHOE INDIANAPOLIS | 06/04/2026 | Race 10 | 1 Mile | Turf | Allowance | Purse: \$38,000

Speed # Edge (>=3)		SIM Odds		SIM Speed #		1st Call Leader		Early Pace		Late Pace		Total Pace	
6	3	8	2-1	8	75.4	12	28.1%	12	85.0	6	82.7	8	162.7
		6	5/2	6	73.3	4	24.5%	8	83.0	8	79.7	6	159.0
		11	7-1	2	68.1	7	13.9%	4	82.7	11	78.0	12	157.5
		2	13-1	11	67.8	8	12.9%	1	77.7	10	76.7	11	154.7
		7	13-1	5	67.3	2	7.6%	7	77.3	2	76.3	7	153.3
		4	14-1	10	65.5	3	6.5%	2	76.7	7	76.0	2	153.0

Pace / Improvement / Times																				
No.	Horse	ML Odds	SIM Odds	PAR	PAR+	Early	Mid	Late	1/4	1/2	Class Move	Move by Lengths	1st Timer (3 Max)	Bullet & Go	Back Bullet	2nd Race Parability	Jockey Win	Jockey ITM	Trainer Win	Trainer ITM
1	VIENNA CHARM	12-1	999-1	NO	0.0%	▲		▲			▲	1.2					0.85	0.98	0.24	0.58
2	MAGNUS GOLD	4-1	13-1	YES	34.9%		▲	▲		▲	▼	-0.2					0.75	0.89	1.00	1.00
3	EL SIERENO	20-1	1001-1	NO	0.0%	▲	▲	▲	▲		▲	1.4					0.60	0.85	0.17	0.25
4	ROSSO FUOCO	15-1	14-1	MAYBE -1	22.7%			▲			▼	-1.4					0.79	0.98	0.40	0.78
5	SCENIC JUSTICE	9/2	25-1	YES	30.8%				▲	▲	▼	-1.4					0.38	0.74	0.21	0.70
6	LOOKOUT KID	8-1	5/2	YES	54.9%			▲			▼	-3.0					0.74	1.00	0.23	0.33
7	PENITENT	30-1	13-1	MAYBE -1	29.8%			▲	▲	▲	▼	-1.4					0.40	0.65	0.06	0.55
8	SAVE MY TOWN	7/2	2-1	YES	65.0%			▲			▼	-1.2					0.72	1.00	0.35	0.72
9	MY MISTER PERFECT	30-1	499-1	MAYBE -1	8.5%						▼	-1.2					1.00	0.97	0.42	0.82
10	BOUT TREE FIDDY	12-1	42-1	YES	23.6%						→	0.0					0.65	0.78	0.40	0.78
11	TOY'STROUBLEDHERO	8-1	7-1	YES	36.0%			▲			▼	-1.2					0.42	0.89	0.40	0.78
12	AUDUBON BAY	20-1	1001-1	NO	0.0%			▲			▲	1.2					0.84	0.76	0.50	0.80

No.	CZone %	E (CZ%)	EP (CZ%)	P (CZ%)	PC (CZ%)	C (CZ%)	ANY (CZ%)	N/A (CZ%)	1st
8	51.2%	2 (11.9%)		1 (2.1%)	8 (51.2%)	5 (18.1%)			
6	33.4%			3 (12.8%)		6 (33.4%)			
5	18.1%			4 (10.2%)		7 (0.0%)			
12	15.4%			11 (12.1%)		9 (13.9%)			
9	13.9%			12 (15.4%)		10 (9.8%)			
3	12.8%								



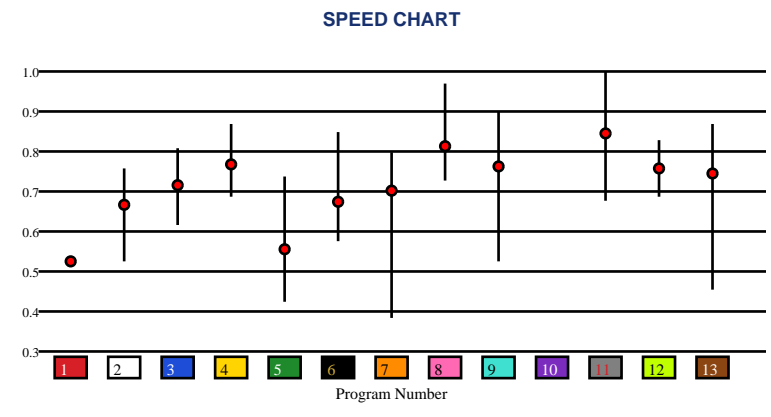


**HORSESHOE INDIANAPOLIS | 06/04/2026 | Race 11 | 330 Yards | Dirt | Maiden Special Weight | Purse: \$17,000**

Speed # Edge (>=3)	SIM Odds		SIM Speed #		1st Call Leader		Early Pace		Late Pace		Total Pace	
	13	2-1	9	83.8	1	9.3%	13		13		13	
	9	7/2	11	83.0	4	8.5%	9		9		9	
	11	7/2	13	82.9	13	7.8%	11		11		11	
	7	10-1	8	80.9	7	7.8%	8		8		8	
	8	15-1	4	76.8	12	7.7%	7		7		7	
	10	25-1	7	76.4	10	7.7%	3		3		3	

Pace / Improvement / Times																				
No.	Horse	ML Odds	SIM Odds	PAR	PAR+	Early	Mid	Late	1/4	1/2	Class Move	Move by Lengths	1st Timer (3 Max)	Bullet & Go	Back Bullet	2nd Race Parability	Jockey Win	Jockey ITM	Trainer Win	Trainer ITM
1	WAGON PAINT	30-1	1001-1	NO	0.0%												0.57	0.56	0.62	0.63
2	FAVORITE FIRST PRIZE	12-1	999-1	NO	0.0%												0.57	0.56	0.62	0.63
3	RHINO SIX	15-1	1001-1	NO	0.0%												0.46	0.32	0.39	0.45
4	LARRYKNOCKSOUTMEGAN	5-1	76-1	NO	0.0%												0.27	0.25	0.47	0.36
5	CORONAPOLLO	20-1	999-1	NO	0.0%												0.57	0.28	0.62	0.41
6	SUM OF IT ALL	15-1	142-1	NO	0.0%												0.31	0.56	0.48	0.74
7	AP JESSIES CARTEL	6-1	10-1	NO	0.0%												0.28	0.39	0.62	0.63
8	FELTON	7/2	15-1	NO	0.0%												0.76	0.92	0.62	0.63
9	KLT FURSFYIN	5/2	7/2	NO	0.0%												0.57	0.56	0.39	0.45
10	IF U AINT THE CARTEL	8-1	25-1	NO	0.0%							1.67					1.00	1.00	1.00	1.00
11	NIYO DE ORO (AE)	3-1	7/2	NO	0.0%												1.00	1.00	1.00	1.00
12	DONT YA SEE (AE)	20-1	52-1	NO	0.0%												0.46	0.32	0.62	0.63
13	A POLITICAL ELMO (AE)	6-1	2-1	NO	0.0%												0.57	0.56	0.62	0.63

No.	CZone %	E (CZ%)	EP (CZ%)	P (CZ%)	PC (CZ%)	C (CZ%)	ANY (CZ%)	N/A (CZ%)	1st
1	0.0%							1 (0.0%)	10
2	0.0%							2 (0.0%)	
3	0.0%							3 (0.0%)	
4	0.0%							4 (0.0%)	
5	0.0%							5 (0.0%)	
6	0.0%							6 (0.0%)	
								7 (0.0%)	
								8 (0.0%)	
								9 (0.0%)	
								11 (0.0%)	
								12 (0.0%)	
								13 (0.0%)	



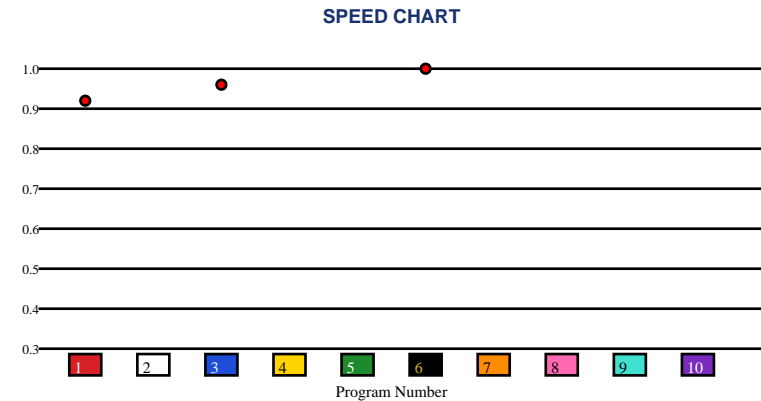


**HORSESHOE INDIANAPOLIS | 06/04/2026 | Race 12 | 250 Yards | Dirt | Maiden Special Weight | Purse: \$17,000**

Speed # Edge (>=3)		SIM Odds		SIM Speed #		1st Call Leader		Early Pace		Late Pace		Total Pace	
6	3	7	8-1	7	71.1	5	10.9%	5		5		5	
		1	9-1	2	70.3	3	10.5%	1		1		1	
		8	9-1	4	70.0	1	10.2%	7		7		7	
		3	9-1	1	70.0	9	10.2%	6		6		6	
		5	9-1	5	69.9	2	10.1%	8		8		8	
		4	9-1	3	69.9	6	10.0%	4		4		4	

Pace / Improvement / Times																				
No.	Horse	ML Odds	SIM Odds	PAR	PAR+	Early	Mid	Late	1/4	1/2	Class Move	Move by Lengths	1st Timer (3 Max)	Bullet & Go	Back Bullet	2nd Race Parability	Jockey Win	Jockey ITM	Trainer Win	Trainer ITM
1	FLYING BLONDE 123	3-1	9-1	NO	0.0%												0.50	0.85	1.00	0.92
2	GV WINNERS BLOOD	15-1	9-1	NO	0.0%								0.33				0.27	0.25	0.43	0.35
3	KISSIN JESSY	10-1	9-1	NO	0.0%												1.00	1.00	0.91	0.97
4	HESA RELENTLESS SEIS	12-1	9-1	NO	0.0%								1.33				0.76	0.92	0.73	0.90
5	FAVORITE LADY 123	5/2	9-1	NO	0.0%								2.00				0.24	0.34	0.73	0.90
6	TW POLITICAL WITCH	9/2	10-1	NO	0.0%												0.31	0.78	0.56	1.00
7	KLT TELLEM SEPARATE	20-1	8-1	NO	0.0%								0.33				0.48	0.60	0.35	0.43
8	PATRICK D	12-1	9-1	NO	0.0%								1.33				0.48	0.60	0.91	0.97
9	LAST SWEET JESS	10-1	10-1	NO	0.0%								0.33				0.28	0.39	0.23	0.66
10	SHE IS STAR	12-1	10-1	NO	0.0%								0.33				0.46	0.32	0.35	0.43

No.	CZone %	E (CZ%)	EP (CZ%)	P (CZ%)	PC (CZ%)	C (CZ%)	ANY (CZ%)	N/A (CZ%)	1st
1	0.0%							1 (0.0%)	2
2	0.0%							3 (0.0%)	4
3	0.0%							6 (0.0%)	5
4	0.0%								7
5	0.0%								8
6	0.0%								9
									10



# SMART SHEETS

[Back to Race Summary](#)

## Data Guide & Structural Interpretation Framework

### DATA FOUNDATION

---

All Smart Sheets metrics are derived from up to the horse's 10 most recent races, where applicable. Calculations are structured to emphasize recent form, reflect demonstrated performance patterns, and reduce distortion from outdated efforts.

More recent races carry greater interpretive weight within projections and structural evaluations. This ensures current condition and form cycles are prioritized over distant historical performance.

### PERFORMANCE STANDARD

---

#### PAR (Race Standard)

PAR indicates whether a horse has previously run a speed figure equal to or greater than today's race standard.

Designations include:

**'YES'** – Has met or exceeded today's PAR

**'MAYBE'** -1 to -5 – Finished within 1 to 5 speed points of today's PAR

**'NO'** – Has not approached today's PAR level

The MAYBE designation identifies horses that have demonstrated competitive proximity without fully qualifying.

#### PAR+

PAR+ represents the percentage of simulations in which the horse meets or exceeds today's PAR standard. Higher percentages indicate more frequent projected competitiveness at today's performance level. PAR+ reflects projected probability rather than past qualification alone.

#### Performance Context

Approximately 5 Speed or Pace points equate to 1 length. This conversion provides scale when interpreting speed separation, PAR proximity, pace advantage, and structural positioning. Small numeric gaps may represent marginal positional differences, while larger separations may reflect more meaningful competitive distance.

## SPEED & VALUE STRUCTURE

---

### Speed # Edge (Minimum Threshold: 3 Points)

Speed # Edge highlights meaningful separation between projected top speed figures. An edge is recognized only when a horse holds a minimum 3-point advantage over the next highest projected figure.

Using the structural scale:

3 points ≈ slightly more than half a length

5 points ≈ approximately 1 length

This threshold filters out normal figure variance and isolates measurable separation.

### SIM Odds

SIM Odds represent fair-value odds derived from simulation probability. They reflect the model's internal estimate of each horse's likelihood of winning relative to the field.

When compared to Morning Line or live wagering odds, differences between projected probability and market pricing may help identify potential mispricing or value discrepancies.

Smart Sheets does not make wagering recommendations. SIM Odds provide a structured framework for evaluating probability versus price.

### SIM Speed #

SIM Speed is a projected performance figure generated from race simulations. It estimates how fast the horse is expected to run today under modeled pace and race-flow conditions. The number is most useful when evaluated relative to the field rather than in isolation.

### Speed Chart

The Speed Chart visually displays each horse's recent speed range:

'**Top**' of line – Maximum figure

'**Bottom**' of line – Minimum figure

'**Red Dot**' – Average figure

This allows evaluation of ceiling, floor, consistency, and volatility.

## PACE PROJECTIONS

---

### 1st Call Leader Projection

This metric estimates the likelihood a horse will be on the lead at the first call. It helps define projected early race structure and potential pace pressure.

### Early & Late Pace

These columns reflect performance strength in the front half and finishing phase of the race. Evaluating these collectively helps visualize projected race flow and potential positional advantages.

### Total Pace

Total Pace represents combined early and late performance strength. Separation within this column may indicate in-race structural advantage when evaluated relative to the field.

## POSITIONAL PROFILE

---

### C-Zone (Comfort Zone)

C-Zone measures how closely today's projected race conditions align with the pace environment under which the horse produced its best competitive finish. It evaluates race fit rather than raw speed. Higher percentages indicate stronger alignment between projected structure and demonstrated success conditions.

### Pace View

Pace View categorizes horses based on positional tendencies during competitive finishes.

'E' – Front-runner

'EP' – Lead or press

'P' – Tactical stalker

'PC' – Versatile stalker/closer

'C' – Closer

'ANY' – Demonstrated multiple effective styles

'N/A' – No competitive finish within 5 lengths

'1st' – First-time starter

The percentage displayed next to each horse represents its C-Zone score, combining positional tendency with projected structural fit.

## DEVELOPMENT & MOVEMENT SIGNALS

---

### **Class Move**

Indicates whether a horse is moving up in class, moving down in class, or remaining at a similar level. Class shifts may influence competitive positioning within today's race structure.

### **First-Time Starter Rank**

Ranks debut runners using internal evaluation metrics for comparison within the field. The maximum First-Time Starter score is 3, representing the strongest relative rating among debut runners in the race.

### **Workout Indicators**

Bullet / Bullet & Go indicators reflect strong recent workouts relative to the field and may signal preparation sharpness.

### **2nd Race Parability**

Applies to lightly raced horses making their second start. Indicates whether projected development meets or exceeds today's PAR standard.

This metric may carry increased relevance when few or no horses have previously met today's PAR threshold.

## CONNECTION STRENGTH

---

Jockey and Trainer ratings are scaled within the field and color-coded to reflect relative strength.

## COLOR FORMATTING & STRUCTURAL EDGE IDENTIFICATION

---

Smart Sheets uses color formatting and structured layout to visually identify potential structural advantages, including meaningful speed separation, PAR qualification or proximity, projected pace leadership, connection strength, and simulation pricing disparities.

Interpretation of how these elements interact remains the responsibility of the user.

## DISCLAIMER

---

Smart Sheets data is compiled using information derived from reputable industry sources and publicly available racing data. All data is used in good faith and presented for informational and educational purposes. While every effort is made to ensure accuracy and completeness, errors, omissions, or data inconsistencies may occur and are unintended.

Smart Sheets is a decision-support tool and does not guarantee outcomes.

## RESPONSIBLE WAGERING NOTICE

---

Horse racing wagering involves financial risk. Users should never wager more than they can afford to lose. If you cannot afford to lose anything, you should not gamble.

If you believe you may have a gambling problem, seek assistance immediately through a licensed professional or recognized responsible gaming organization.

All wagering decisions are solely the responsibility of the user.