



**See the Edge in Every Race**  
**SARATOGA 06/05/2026**

How to Use Smart Sheets → <https://horseracingtoday.net/wp-content/uploads/2026/03/HRTSmartSheetsExplanations.pdf>

Race	Distance	Surface	Race Type	Purse
<a href="#"><u>Race 1</u></a>	1 1/8 Miles	Dirt	Maiden Special Weight	\$115,000
<a href="#"><u>Race 2</u></a>	6 Furlongs	Dirt	Allowance Optional Claiming	\$110,000
<a href="#"><u>Race 3</u></a>	6 1/2 Furlongs	Dirt	Maiden Special Weight	\$115,000
<a href="#"><u>Race 4</u></a>	7 Furlongs	Dirt	BedORos-G2	\$300,000
<a href="#"><u>Race 5</u></a>	5 1/2 Furlongs	Turf	Allowance	\$120,000
<a href="#"><u>Race 6</u></a>	1 1/16 Miles	Inner Turf	Maiden Special Weight	\$115,000
<a href="#"><u>Race 7</u></a>	1 1/8 Miles	Dirt	Allowance Optional Claiming	\$130,000
<a href="#"><u>Race 8</u></a>	5 1/2 Furlongs	Turf	Allowance Optional Claiming	\$125,000
<a href="#"><u>Race 9</u></a>	1 1/16 Miles	Inner Turf	WnDrAgn-G2	\$300,000
<a href="#"><u>Race 10</u></a>	1 1/8 Miles	Dirt	Acorn-G1	\$500,000
<a href="#"><u>Race 11</u></a>	1 3/16 Miles	Turf	NewYork-G1	\$750,000
<a href="#"><u>Race 12</u></a>	1 1/8 Miles	Dirt	OPhipps-G1	\$500,000
<a href="#"><u>Race 13</u></a>	7 Furlongs	Dirt	Allowance	\$105,000
<a href="#"><u>Race 14</u></a>	1 Mile	Inner Turf	Maiden Special Weight	\$115,000
<a href="#"><u>Appendix</u></a>			Smart Sheets Reference Guide	

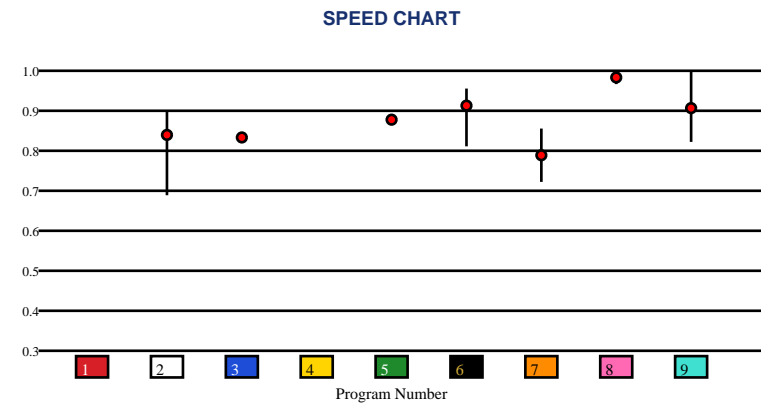


# SARATOGA | 06/05/2026 | Race 1 | 1 1/8 Miles | Dirt | Maiden Special Weight | Purse: \$115,000

Speed # Edge (>=3)		SIM Odds		SIM Speed #		1st Call Leader		Early Pace		Late Pace		Total Pace	
8	8	8	8/5	8	88.5	9	35.6%	9	89.0	8	91.0 (+8)	8	177.0 (+6)
		9	5-1	6	83.6	6	17.3%	8	86.0	6	82.7	9	171.5
		6	5-1	9	81.4	8	13.8%	6	85.3	9	82.5	6	168.0
		3	14-1	1	81.3	4	12.6%	2	82.7	2	82.3	2	165.0
		4	15-1	5	81.2	1	11.6%	7	81.0	5	81.0	5	162.0
		5	16-1	3	81.1	2	8.9%	5	81.0	3	74.0	3	152.0

Pace / Improvement / Times																				
No.	Horse	ML Odds	SIM Odds	PAR	PAR+	Early	Mid	Late	1/4	1/2	Class Move	Move by Lengths	1st Timer (3 Max)	Bullet & Go	Back Bullet	2nd Race Parability	Jockey Win	Jockey ITM	Trainer Win	Trainer ITM
1	STORMING	6-1	17-1	NO	0.0%								2.67		✓		0.95	0.94	0.77	0.73
2	LUZ DE GUIA	30-1	249-1	NO	0.0%			▲			▲	1.6					0.28	0.42	0.76	0.47
3	COMMERCE	9/2	14-1	NO	0.0%						▲	1.2					0.59	0.67	0.74	0.72
4	BATTLE	12-1	15-1	NO	0.0%								2.67		✓		0.76	0.84	0.77	0.73
5	SORRENTINO	8-1	16-1	NO	0.0%						▲	1.6					0.72	0.74	0.75	0.72
6	COPIOUS	10-1	5-1	NO	0.0%		▲		▲	▲	▲	1.6					0.62	0.77	1.00	1.00
7	MR. WILLIAN	10-1	1001-1	NO	0.0%			▲			▲	2.2					0.92	0.95	0.49	0.58
8	HADRIAN'S WALL	7/5	8/5	MAYBE -5	0.0%	▲					▲	2.2					1.00	0.97	1.00	0.94
9	DARK ASSAULT	6-1	5-1	MAYBE -5	0.2%						▲	1.0					0.88	1.00	0.59	0.93

No.	CZone %	E (CZ%)	EP (CZ%)	P (CZ%)	PC (CZ%)	C (CZ%)	ANY (CZ%)	N/A (CZ%)	1st
9	76.2%		6 (27.3%)	8 (0.0%)	2 (67.4%)	3 (19.6%)		5 (0.0%)	1
2	67.4%		9 (76.2%)			7 (15.9%)			4
6	27.3%								
3	19.6%								
7	15.9%								
1	0.0%								



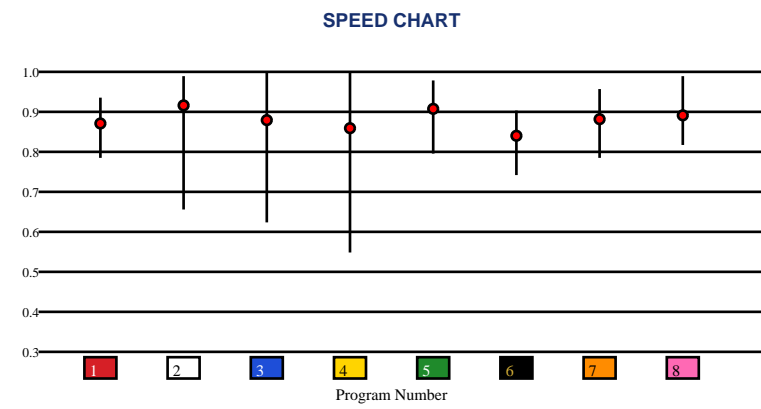


**SARATOGA | 06/05/2026 | Race 2 | 6 Furlongs | Dirt | Allowance Optional Claiming | Purse: \$110,000**

Speed # Edge (>=3)	SIM Odds	SIM Speed #	1st Call Leader	Early Pace	Late Pace	Total Pace	
3	2-1	5	87.9	5	96.3	8	181.0
2	3-1	2	86.5	6	91.7	5	176.3
5	4-1	3	86.3	4	88.3	3	172.7
8	7-1	8	86.1	8	88.0	2	172.7
4	14-1	6	81.7	3	88.0	7	171.3
6	62-1	7	80.2	7	85.3	6	171.0

Pace / Improvement / Times																				
No.	Horse	ML Odds	SIM Odds	PAR	PAR+	Early	Mid	Late	1/4	1/2	Class Move	Move by Lengths	1st Timer (3 Max)	Bullet & Go	Back Bullet	2nd Race Parability	Jockey Win	Jockey ITM	Trainer Win	Trainer ITM
1	JACKSON HEIGHTS	10-1	249-1	NO	0.0%				▲	▲							0.72	0.92	0.49	0.77
2	ELYSIAN MEADOWS	9/2	3-1	NO	0.0%			▲									0.93	0.88	0.74	0.72
3	HIT THE POST	7/2	2-1	NO	0.0%	▲	▲	▲									0.62	0.76	0.27	0.48
4	KENNY BE	3-1	14-1	NO	0.0%			▲									0.98	1.00	0.76	0.79
5	FACTUALLY CORRECT	4-1	4-1	NO	0.0%	▲	▲		▲	▲							0.63	0.83	0.67	0.66
6	PROJECTABILITY	5-1	62-1	NO	0.0%			▲									0.87	0.94	1.00	1.00
7	RUSSI	12-1	110-1	NO	0.0%			▲									1.00	0.97	0.22	0.53
8	ON THE HILL	10-1	7-1	NO	0.0%												0.90	0.94	0.22	0.53

No.	CZone %	E (CZ%)	EP (CZ%)	P (CZ%)	PC (CZ%)	C (CZ%)	ANY (CZ%)	N/A (CZ%)	1st
8	90.7%	3 (5.7%)	4 (23.3%)	6 (9.1%)		1 (16.0%)	8 (90.7%)		
5	68.1%	5 (68.1%)				2 (0.5%)			
4	23.3%					7 (7.2%)			
1	16.0%								
6	9.1%								
7	7.2%								



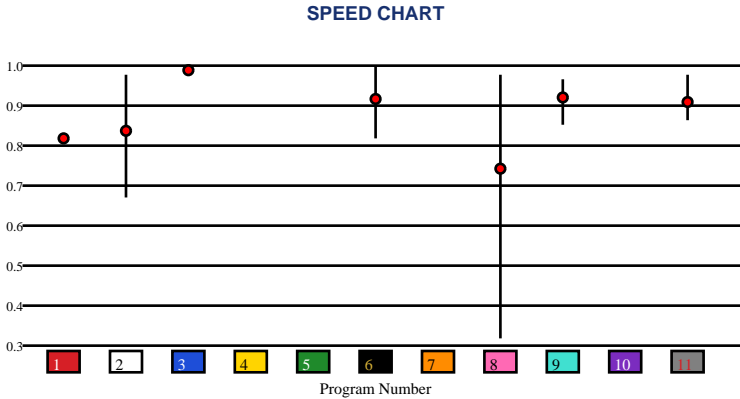


# SARATOGA | 06/05/2026 | Race 3 | 6 1/2 Furlongs | Dirt | Maiden Special Weight | Purse: \$115,000

Speed # Edge (>=3)	SIM Odds		SIM Speed #		1st Call Leader		Early Pace		Late Pace		Total Pace	
8	3-1	6	80.4	1	36.3%	1	97.0	11	88.3	3	180.0 (+10)	
1	9-1	9	80.3	3	31.7%	3	96.0	3	84.0	11	170.3	
7	9-1	11	79.9	8	15.7%	8	91.3	9	79.7	9	169.7	
5	9-1	4	76.3	6	4.9%	6	90.7	6	77.0	6	167.7	
10	10-1	1	76.2	2	3.8%	9	90.0	2	74.7	2	161.3	
4	10-1	3	76.1	5	2.1%	2	86.7	1	57.0	1	154.0	

Pace / Improvement / Times																				
No.	Horse	ML Odds	SIM Odds	PAR	PAR+	Early	Mid	Late	1/4	1/2	Class Move	Move by Lengths	1st Timer (3 Max)	Bullet & Go	Back Bullet	2nd Race Parability	Jockey Win	Jockey ITM	Trainer Win	Trainer ITM
1	HERO DECLARED	4-1	9-1	NO	7.1%						▲	1.4					0.64	0.75	0.63	0.76
2	ONEPAC	15-1	15-1	NO	4.7%	▲	▲	▲	▲		▲	0.4					0.42	0.61	0.13	0.64
3	TAB AT ZANZIBAR	5-1	11-1	NO	6.3%						▲	0.8				100	0.88	1.00	1.00	1.00
4	PRESIDENTIAL POWER	12-1	10-1	NO	7.2%								2.67				0.76	0.84	0.71	0.76
5	HOLDING POWER	15-1	9-1	NO	7.1%								2.31				0.56	0.72	0.72	0.88
6	CRITERIA	7/2	11-1	NO	0.0%	▲	▲		▲	▲	▲	0.2					1.00	0.97	0.94	0.99
7	NOBLE EDITION	6-1	9-1	NO	5.9%								2.32				0.95	0.94	1.00	1.00
8	ACCOST	8-1	3-1	NO	23.0%						▲	0.2					0.92	0.95	0.94	0.99
9	PUTEKETEKE	10-1	66-1	NO	0.0%		▲			▲	▲	1.0					0.62	0.77	0.65	0.76
10	DARK MOON	8-1	10-1	NO	6.3%								2.32				0.72	0.74	0.71	0.76
11	PARTY ANIMAL	20-1	58-1	NO	0.0%						▲	0.4					0.42	0.60	0.29	0.60

No.	CZone %	E (CZ%)	EP (CZ%)	P (CZ%)	PC (CZ%)	C (CZ%)	ANY (CZ%)	N/A (CZ%)	1st
2	88.4%	3 (41.9%)		6 (16.5%)		8 (11.8%)	2 (88.4%)	1 (47.3%)	4
1	47.3%	9 (2.1%)				11 (5.2%)			5
3	41.9%								7
6	16.5%								10
8	11.8%								
11	5.2%								



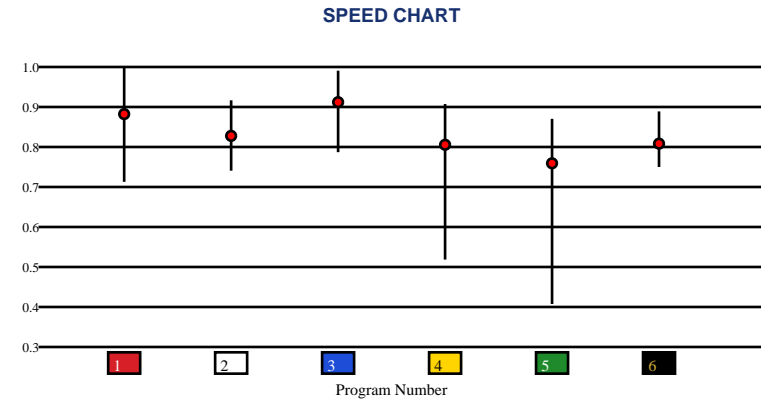


**SARATOGA | 06/05/2026 | Race 4 | 7 Furlongs | Dirt | BedORos-G2 | Purse: \$300,000**

Speed # Edge (>=3)		SIM Odds		SIM Speed #		1st Call Leader		Early Pace		Late Pace		Total Pace	
1	9	3	7/5	3	101.8	1	61.2%	1	97.7 (+6)	3	101.3 (+8)	3	191.0
		1	2-1	1	97.2	5	21.2%	5	91.7	2	93.7	1	186.7
		5	5-1	2	89.3	3	16.0%	3	89.7	6	90.3	5	174.0
		4	18-1	5	85.7	6	1.0%	6	80.3	1	89.0	6	170.7
		2	32-1	6	85.1	4	0.5%	4	79.3	5	82.3	2	169.0
		6	332-1	4	81.2	2	0.0%	2	75.3	4	77.7	4	157.0

Pace / Improvement / Times																				
No.	Horse	ML Odds	SIM Odds	PAR	PAR+	Early	Mid	Late	1/4	1/2	Class Move	Move by Lengths	1st Timer (3 Max)	Bullet & Go	Back Bullet	2nd Race Parability	Jockey Win	Jockey ITM	Trainer Win	Trainer ITM
1	GRAND JOB	6/5	2-1	YES	45.4%	▲	▲		▲	▲	▼	-0.4					0.59	0.69	0.74	0.77
2	SCALABLE	10-1	32-1	YES	9.4%			▲			▼	-0.4					0.76	0.86	0.75	0.77
3	WAYS AND MEANS	1-1	7/5	YES	60.6%						▼	-0.4					1.00	1.00	1.00	1.00
4	SENZA PAROLE	8-1	18-1	MAYBE -1	15.1%			▲		▲							0.95	0.96	1.00	1.00
5	PRAYING	10-1	5-1	MAYBE -5	28.0%			▲			▲	0.4					0.72	0.76	0.26	0.66
6	VINCEY GIRL	30-1	332-1	MAYBE -3	0.0%			▲			▲	0.6					0.64	0.77	0.49	0.61

No.	CZone %	E (CZ%)	EP (CZ%)	P (CZ%)	PC (CZ%)	C (CZ%)	ANY (CZ%)	N/A (CZ%)	1st
1	63.8%		1 (63.8%)	3 (28.1%)	2 (20.9%)	6 (51.1%)			
5	60.5%		5 (60.5%)		4 (25.9%)				
6	51.1%								
3	28.1%								
4	25.9%								
2	20.9%								

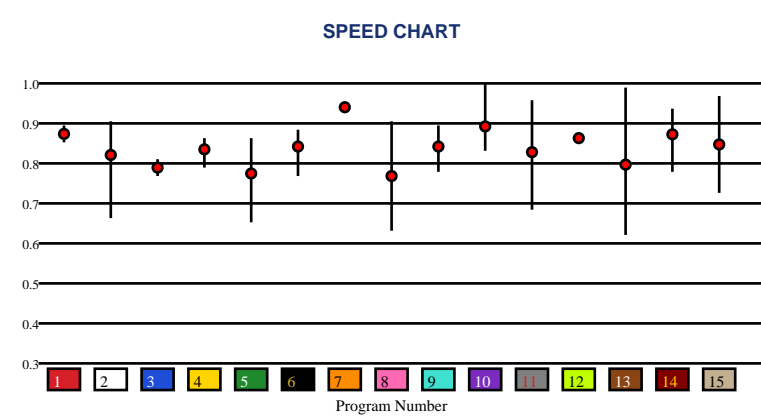


# SARATOGA | 06/05/2026 | Race 5 | 5 1/2 Furlongs | Turf | Allowance | Purse: \$120,000

Speed # Edge (>=3)	SIM Odds		SIM Speed #		1st Call Leader		Early Pace		Late Pace		Total Pace	
15	7/5	7	89.3	9	34.4%	9	99.3	15	91.3	7	182.0	
7	7/2	15	87.3	4	23.9%	4	96.7	7	90.0	15	179.7	
11	8-1	1	83.0	14	17.1%	14	95.7	1	86.0	9	177.7	
2	10-1	9	82.0	10	9.9%	10	95.3	5	83.0	4	172.3	
13	20-1	14	81.8	12	7.8%	12	95.0	11	82.3	1	171.0	
10	27-1	10	81.2	8	2.5%	13	92.3	2	80.3	11	170.3	

Pace / Improvement / Times																				
No.	Horse	ML Odds	SIM Odds	PAR	PAR+	Early	Mid	Late	1/4	1/2	Class Move	Move by Lengths	1st Timer (3 Max)	Bullet & Go	Back Bullet	2nd Race Parability	Jockey Win	Jockey ITM	Trainer Win	Trainer ITM
1	EMBLAZE	9/2	1001-1	MAYBE -2	0.0%			▲		▲	→	0.0					0.95	0.94	0.63	0.84
2	SHORE WAR	10-1	10-1	MAYBE -1	25.8%	▲	▲		▲	▲	▲	0.4					0.72	0.74	0.67	0.92
3	PRINCESS ANDI	10-1	1001-1	NO	0.0%						▲	2.4					1.00	0.97	0.81	0.94
4	PRAYFORTHEWICKED	10-1	1001-1	MAYBE -5	0.0%	▲	▲		▲	▲	▲	1.0					0.92	0.95	0.52	0.73
5	RATU JAWA	50-1	42-1	MAYBE -5	17.0%						▲	0.2					0.36	0.47	0.31	0.42
6	PILLAR OF BEAUTY	12-1	1001-1	MAYBE -3	1.5%						→	0.0					0.59	0.67	0.60	0.72
7	DI NATALE	2-1	7/2	YES	100.0%	▲	▲			▲	▲	1.0					0.64	0.71	1.00	0.98
8	MISCHIEF LADY	30-1	1001-1	MAYBE -1	0.0%			▲			▼	-0.2					0.42	0.69	0.48	0.95
9	TRISKELION	8-1	82-1	MAYBE -2	17.0%			▲			▲	1.4					0.77	0.93	0.40	0.60
10	PAULA'S A STAR	15-1	27-1	YES	22.9%			▲			▼	-0.2					0.62	0.77	0.25	0.70
11	SILSBEE	4-1	8-1	YES	28.5%	▲	▲		▲	▲	▲	0.4					0.88	1.00	0.54	0.68
12	COACH ALBERT LADY (MTO)	7/2	82-1	MAYBE -5	16.6%						▲	0.4					1.00	0.97	0.65	0.82
13	MILA CANDY (MTO)	15-1	20-1	YES	15.6%	▲	▲		▲		▼	-0.2					0.46	0.70	0.40	0.77
14	KADENA (MTO)	6-1	28-1	YES	23.0%				▲		▼	-0.2					0.73	0.82	0.55	0.66
15	SHEER WILL (MTO)	5/2	7/5	YES	51.3%			▲		▲	→	0.0					0.95	0.94	0.81	1.00

No.	CZone %	E (CZ%)	EP (CZ%)	P (CZ%)	PC (CZ%)	C (CZ%)	ANY (CZ%)	N/A (CZ%)	1st
15	60.1%	4 (31.4%)	11 (10.4%)	3 (6.8%)	12 (36.9%)	1 (7.5%)		7 (0.0%)	
9	44.2%	8 (5.3%)		6 (16.2%)	15 (60.1%)	2 (25.9%)			
12	36.9%	9 (44.2%)		13 (22.2%)		5 (15.9%)			
4	31.4%	10 (17.8%)							
2	25.9%	14 (23.7%)							
14	23.7%								



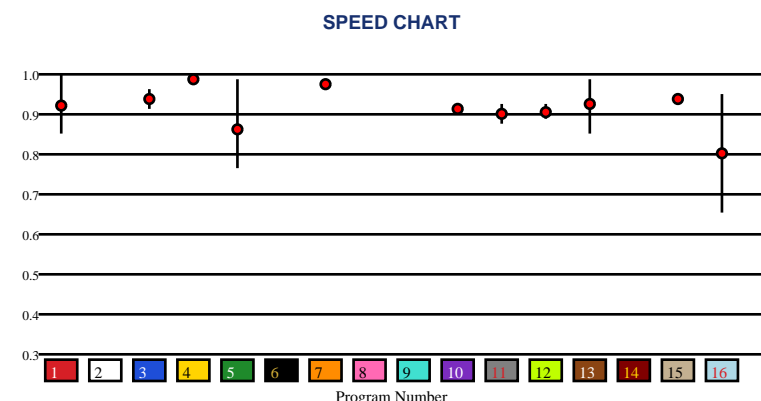


# SARATOGA | 06/05/2026 | Race 6 | 1 1/16 Miles | Inner Turf | Maiden Special Weight | Purse: \$115,000

Speed # Edge (>=3)	SIM Odds		SIM Speed #		1st Call Leader		Early Pace		Late Pace		Total Pace	
13	3-1	13	77.8	10	35.5%	10	90.0	7	89.0	4	173.0	
16	5-1	3	76.0	4	21.2%	15	88.0	13	86.7	10	169.0	
1	6-1	1	74.7	15	19.8%	4	88.0	4	85.0	3	166.0	
2	17-1	2	74.0	5	17.5%	3	84.0	3	82.0	13	165.0	
14	17-1	14	74.0	3	5.0%	5	83.0	11	81.0	7	163.0	
9	18-1	6	73.9	12	0.5%	12	81.0	1	80.3	12	157.3	

Pace / Improvement / Times																				
No.	Horse	ML Odds	SIM Odds	PAR	PAR+	Early	Mid	Late	1/4	1/2	Class Move	Move by Lengths	1st Timer (3 Max)	Bullet & Go	Back Bullet	2nd Race Parability	Jockey Win	Jockey ITM	Trainer Win	Trainer ITM
1	ISADORA DUNCAN	10-1	6-1	MAYBE -1	14.4%						▲	0.2					0.59	0.67	0.70	0.75
2	MADELINE'S AGENDA	20-1	17-1	NO	1.9%								2.24				0.57	0.72	0.65	0.65
3	DEFERENCE	6-1	70-1	MAYBE -4	0.0%	▲	▲	▲			▲	1.0					0.56	0.72	0.73	0.87
4	SECRETLY DELIGHTED	7/2	18-1	MAYBE -2	1.9%						▲	2.0				93	0.64	0.71	0.61	0.72
5	HOME WRECKER	10-1	199-1	MAYBE -2	0.0%	▲	▲			▲	▲	0.4					0.76	0.84	0.73	0.75
6	LISA JOY	12-1	18-1	NO	1.8%												0.72	0.74	0.55	0.96
7	ICECREAMFOREVRYONE	8-1	25-1	MAYBE -3	1.4%				▲		▼	-2.4					0.95	0.94	0.71	0.75
8	SHELZAWA	5/2	29-1	NO	1.1%												1.00	0.97	0.94	0.98
9	RECONNECTED	20-1	18-1	NO	2.1%								2.94		✓		0.88	1.00	0.82	1.00
10	NEW ROSE	20-1	24-1	NO	1.3%						▼	-0.6				87	0.42	0.60	0.29	0.60
11	RIVER EMPRESS	15-1	1001-1	NO	0.0%						▲	0.2					0.64	0.75	0.26	0.49
12	JORDAN'S LOVE	12-1	1001-1	NO	0.0%			▲			▲	1.2					0.62	0.77	0.29	0.72
13	SWEET LITTLE LILA (AE)	6-1	3-1	MAYBE -2	22.6%						▼	-0.2					0.58	0.77	1.00	0.98
14	FANGO CREEK (AE)	15-1	17-1	NO	2.9%								2.33				0.59	0.67	0.70	0.75
15	AMICABLE FARCE (AE)	8-1	25-1	NO	1.9%						▲	1.4				89	0.92	0.95	0.94	0.98
16	MAJESTIC MOONLIGHT (AE)	12-1	5-1	MAYBE -5	14.8%			▲			▲	1.2					0.92	0.95	0.65	0.65

No.	CZone %	E (CZ%)	EP (CZ%)	P (CZ%)	PC (CZ%)	C (CZ%)	ANY (CZ%)	N/A (CZ%)	1st
13	42.5%	5 (23.2%)		3 (15.9%)		1 (0.0%)		6 (0.0%)	2
5	23.2%			11 (3.2%)		4 (13.6%)		8 (0.0%)	9
16	18.0%					7 (0.0%)		15 (4.8%)	14
3	15.9%					10 (0.0%)			
4	13.6%					12 (10.2%)			
12	10.2%					13 (42.5%)			
						16 (18.0%)			



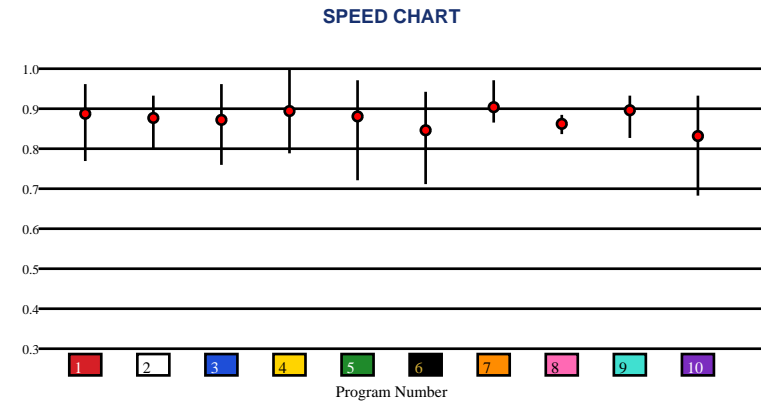


**SARATOGA | 06/05/2026 | Race 7 | 1 1/8 Miles | Dirt | Allowance Optional Claiming | Purse: \$130,000**

Speed # Edge (>=3)		SIM Odds		SIM Speed #		1st Call Leader		Early Pace		Late Pace		Total Pace	
1	4	4	2-1	4	97.6	5	42.8%	5	90.0 (+6)	7	96.0	4	178.7
		1	3-1	1	96.8	8	12.3%	4	84.0	4	94.7	5	178.3
		5	6-1	7	94.4	2	12.0%	2	83.7	1	93.3	1	174.0
		10	10-1	5	92.9	6	9.8%	6	83.3	2	90.3	2	174.0
		2	16-1	2	92.7	4	7.6%	10	81.3	5	88.3	7	173.3
		7	17-1	9	90.3	3	6.4%	1	80.7	3	88.3	3	168.7

Pace / Improvement / Times																				
No.	Horse	ML Odds	SIM Odds	PAR	PAR+	Early	Mid	Late	1/4	1/2	Class Move	Move by Lengths	1st Timer (3 Max)	Bullet & Go	Back Bullet	2nd Race Parability	Jockey Win	Jockey ITM	Trainer Win	Trainer ITM
1	FULL SCREEN	3-1	3-1	YES	54.3%	▲	▲			▲	▼	-0.4					0.88	1.00	0.91	0.81
2	BRAMITO	6-1	16-1	YES	31.1%						▲	0.2					0.72	0.74	1.00	1.00
3	BOURBON DAY	12-1	22-1	YES	24.7%						▼	-0.4					0.77	0.93	0.85	0.84
4	WARP NINE	20-1	2-1	YES	58.1%			▲			→	0.0					0.62	0.94	0.45	0.71
5	COOKE CREEK	8-1	6-1	YES	40.0%						▲	1.4					0.92	0.95	0.59	0.61
6	KINETIC	30-1	199-1	YES	10.0%						→	0.0					0.39	0.58	0.42	0.65
7	BENDOOG	7/2	17-1	YES	38.3%						→	0.0					0.59	0.67	0.63	0.61
8	MONEY GAME	9/2	1001-1	MAYBE -4	0.0%	▲	▲		▲	▲	▲	0.6					0.95	0.94	0.91	0.81
9	GOULD'S GOLD	6-1	142-1	YES	8.4%	▲	▲		▲	▲	→	0.0					1.00	0.97	0.51	0.56
10	BROTHA KENY	15-1	10-1	YES	27.2%	▲		▲	▲		▲	0.2					0.64	0.75	0.41	0.49

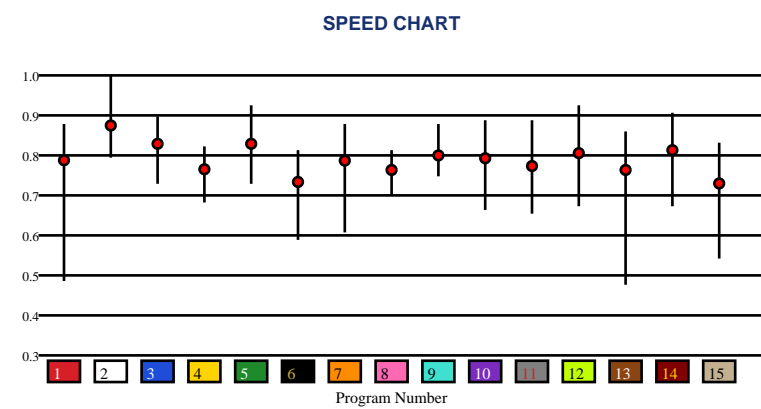
No.	CZone %	E (CZ%)	EP (CZ%)	P (CZ%)	PC (CZ%)	C (CZ%)	ANY (CZ%)	N/A (CZ%)	1st
10	87.6%		4 (26.8%)	9 (21.2%)	1 (82.6%)	8 (39.8%)	10 (87.6%)		
1	82.6%		5 (51.9%)		2 (52.6%)				
6	74.2%				3 (31.3%)				
2	52.6%				6 (74.2%)				
5	51.9%				7 (18.5%)				
8	39.8%								



Speed # Edge (>=3)	SIM Odds		SIM Speed #		1st Call Leader		Early Pace		Late Pace		Total Pace	
13	5/2	3	92.4	6	25.1%	10	97.7	9	90.0	3	180.3	
3	7/2	2	91.3	1	24.5%	3	97.3	11	89.0	2	177.0	
2	5-1	13	88.9	3	19.6%	1	95.0	13	88.3	11	176.3	
11	8-1	11	87.2	10	17.8%	6	95.0	14	87.7	9	176.3	
15	10-1	5	85.3	12	4.7%	12	94.3	2	85.0	13	175.7	
14	28-1	9	84.3	7	3.0%	2	92.0	3	83.0	14	172.7	

Pace / Improvement / Times																				
No.	Horse	ML Odds	SIM Odds	PAR	PAR+	Early	Mid	Late	1/4	1/2	Class Move	Move by Lengths	1st Timer (3 Max)	Bullet & Go	Back Bullet	2nd Race Parability	Jockey Win	Jockey ITM	Trainer Win	Trainer ITM
1	MISCHIEVOUS ANGEL	6-1	90-1	YES	5.1%	▲	▲	▲			▲	0.8					0.95	0.94	0.56	0.63
2	WHATCHATALKINABOUT	12-1	5-1	YES	38.4%			▲			▼	-0.4					0.92	0.95	1.00	0.98
3	FINAL VERDICT	9/2	7/2	YES	42.8%	▲					▲	1.0					1.00	0.97	0.48	0.95
4	SPICED UP	8-1	1001-1	NO	0.0%	▲	▲		▲	▲	▼	-0.2					0.59	0.67	0.60	0.72
5	STRAIGHT ARROW	15-1	28-1	YES	13.8%			▲			▲	0.4					0.62	0.77	0.30	0.54
6	GOLD TRUST	30-1	999-1	NO	3.2%	▲					▲	1.0					0.58	0.77	0.30	0.54
7	BOLTAGE	12-1	999-1	YES	0.0%				▲	▲	▲	1.0					0.87	0.91	0.50	0.63
8	VACATION DANCE	12-1	999-1	NO	0.0%	▲		▲	▲		▲	0.6					0.56	0.72	0.87	0.96
9	TWISTED FILIGREE	12-1	499-1	YES	0.0%	▲					▲	0.6					0.88	1.00	0.54	0.68
10	MENTEE	7/2	55-1	YES	10.8%			▲			▲	1.0					0.72	0.74	0.61	0.72
11	ANTISOCIAL	8-1	8-1	YES	26.3%						▲	0.6					0.77	0.93	0.68	0.74
12	DETERMINED KINGDOM	8-1	66-1	YES	7.6%		▲	▲			▲	0.6					0.64	0.75	0.52	0.70
13	COMMUTED (MTO)	2-1	5/2	MAYBE -2	38.8%						▲	0.2					0.62	0.77	0.81	1.00
14	PARADISE VALLEY (MTO)	10-1	28-1	YES	16.2%		▲	▲		▲	▲	0.4					0.46	0.70	0.40	0.77
15	MISCHIEVOUS M (MTO)	12-1	10-1	MAYBE -5	22.0%	▲	▲		▲	▲	▲	0.2					0.88	1.00	0.40	0.77

No.	CZone %	E (CZ%)	EP (CZ%)	P (CZ%)	PC (CZ%)	C (CZ%)	ANY (CZ%)	N/A (CZ%)	1st
11	86.0%		6 (50.5%)	3 (19.9%)	2 (58.6%)	1 (5.8%)	9 (35.0%)		
4	71.5%		10 (26.5%)	15 (9.3%)	5 (27.9%)	4 (71.5%)	13 (44.6%)		
2	58.6%				7 (8.3%)	8 (0.0%)			
6	50.5%				11 (86.0%)	12 (21.1%)			
13	44.6%					14 (14.6%)			
9	35.0%								



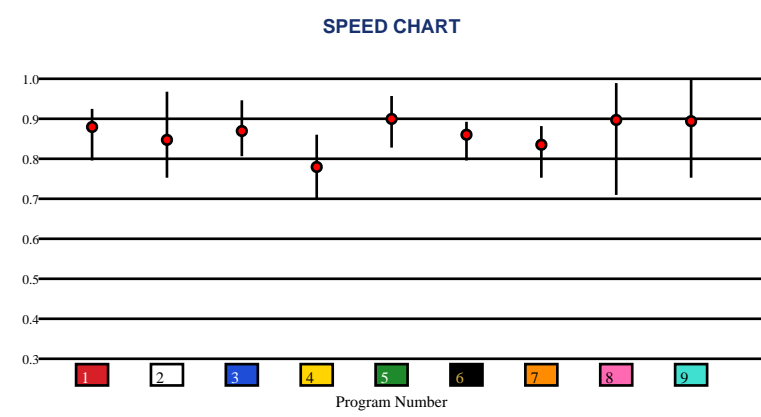


# SARATOGA | 06/05/2026 | Race 9 | 1 1/16 Miles | Inner Turf | WndrAgn-G2 | Purse: \$300,000

Speed # Edge (>=3)	SIM Odds		SIM Speed #		1st Call Leader		Early Pace		Late Pace		Total Pace	
9	7/5	9	92.1	9	35.9%	6	91.0	8	88.3	3	176.3	
8	2-1	8	90.2	6	31.4%	3	89.3	3	87.0	9	172.7	
5	8-1	5	86.1	3	23.9%	9	89.0	2	86.7	8	170.3	
2	14-1	3	84.5	8	6.6%	1	83.7	5	85.7	1	168.7	
3	22-1	2	82.4	1	1.7%	8	82.0	7	85.3	2	166.0	
1	142-1	1	80.6	5	0.3%	2	79.3	1	85.0	7	163.7	

Pace / Improvement / Times																				
No.	Horse	ML Odds	SIM Odds	PAR	PAR+	Early	Mid	Late	1/4	1/2	Class Move	Move by Lengths	1st Timer (3 Max)	Bullet & Go	Back Bullet	2nd Race Parability	Jockey Win	Jockey ITM	Trainer Win	Trainer ITM
1	QUIET STREET	8-1	142-1	MAYBE -3	0.7%						▲	0.4					0.59	0.67	0.70	0.76
2	FITZ RIGHT	4-1	14-1	YES	25.4%	▲	▲				▲	0.4					1.00	0.97	0.94	0.99
3	COACH MAZZULA	6-1	22-1	MAYBE -1	21.9%	▲	▲	▲		▲	▲	0.4					0.88	1.00	1.00	1.00
4	TAX HOLIDAY	12-1	499-1	NO	0.0%						▲	2.6					0.58	0.77	0.94	0.99
5	TIME TO DREAM	9/2	8-1	YES	34.8%	▲			▲	▲	→	0.0					0.95	0.94	0.71	0.76
6	SOLOIST	12-1	332-1	NO	0.0%			▲			▲	0.4					0.92	0.95	0.57	0.70
7	CALL ON ME	8-1	249-1	NO	0.0%		▲				▲	1.2					0.64	0.75	0.47	0.63
8	LION LAKE	8/5	2-1	YES	52.2%			▲	▲	▲	→	0.0					0.72	0.74	0.61	0.74
9	PASHMINA (MTO)	1-1	7/5	YES	58.7%	▲	▲		▲	▲	▼	-2.0					0.95	0.94	0.99	0.93

No.	CZone %	E (CZ%)	EP (CZ%)	P (CZ%)	PC (CZ%)	C (CZ%)	ANY (CZ%)	N/A (CZ%)	1st
8	56.9%		3 (30.4%)	9 (8.8%)	8 (56.9%)	1 (0.6%)			
3	30.4%					2 (28.8%)			
2	28.8%					4 (16.9%)			
5	18.2%					5 (18.2%)			
4	16.9%					6 (3.1%)			
7	14.9%					7 (14.9%)			



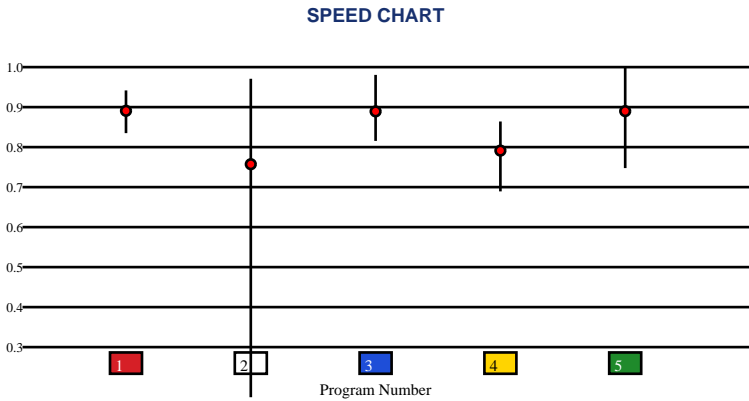


# SARATOGA | 06/05/2026 | Race 10 | 1 1/8 Miles | Dirt | Acorn-G1 | Purse: \$500,000

Speed # Edge (>=3)	SIM Odds		SIM Speed #		1st Call Leader		Early Pace		Late Pace		Total Pace	
	2	6/5	2	94.3	3	52.6%	3	91.7 (+6)	2	96.3	2	180.7
	5	4-1	3	94.3	4	26.4%	4	85.7	1	95.0	1	177.3
	3	9/2	1	93.5	2	14.4%	5	85.7	5	90.3	5	176.0
	1	6-1	5	91.3	5	5.3%	2	84.3	4	81.7	3	172.3
	4	39-1	4	83.3	1	1.4%	1	82.3	3	80.7	4	167.3

Pace / Improvement / Times																				
No.	Horse	ML Odds	SIM Odds	PAR	PAR+	Early	Mid	Late	1/4	1/2	Class Move	Move by Lengths	1st Timer (3 Max)	Bullet & Go	Back Bullet	2nd Race Parability	Jockey Win	Jockey ITM	Trainer Win	Trainer ITM
1	PROM QUEEN	7/2	6-1	MAYBE -2	18.8%	▲	▲			▲	→	0.0					1.00	1.00	1.00	1.00
2	COUNTING STARS	9/2	6/5	YES	46.1%	▲	▲		▲	▲	→	0.0					0.95	0.96	0.60	0.73
3	MEANING	3-1	9/2	YES	27.6%	▲		▲			→	0.0					0.84	0.99	0.64	0.71
4	MAXIMUM OFFER	15-1	39-1	NO	0.0%			▲			▲	2.4					0.56	0.68	0.56	0.69
5	ALWAYS A RUNNER	1-1	4-1	YES	31.3%	▲	▲		▲	▲	→	0.0					0.92	0.98	0.94	0.99

No.	CZone %	E (CZ%)	EP (CZ%)	P (CZ%)	PC (CZ%)	C (CZ%)	ANY (CZ%)	N/A (CZ%)	1st
2	33.6%		3 (32.2%)	4 (9.4%)	1 (19.7%)	5 (0.1%)			
3	32.2%				2 (33.6%)				
1	19.7%								
4	9.4%								
5	0.1%								



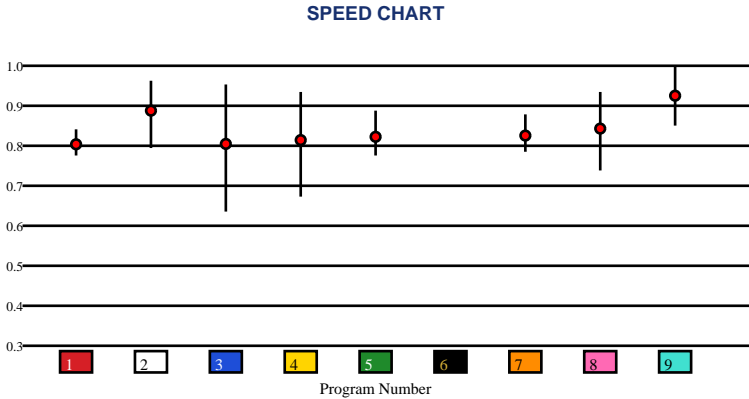


# SARATOGA | 06/05/2026 | Race 11 | 1 3/16 Miles | Turf | NewYork-G1 | Purse: \$750,000

Speed # Edge (>=3)		SIM Odds		SIM Speed #		1st Call Leader		Early Pace		Late Pace		Total Pace	
3	3	2	2-1	2	101.5	8	28.6%	8	81.7	3	102.7	7	178.0
		9	3-1	9	98.6	4	23.0%	1	81.3	5	101.3	3	176.7
		3	3-1	3	95.8	7	18.0%	7	78.0	7	100.0	5	175.3
		8	15-1	8	93.9	1	12.0%	4	77.7	9	95.0	8	174.3
		6	17-1	6	92.6	6	7.2%	9	74.5	8	92.7	9	169.5
		4	39-1	5	90.0	2	6.1%	3	74.0	2	91.3	1	168.0

Pace / Improvement / Times																				
No.	Horse	ML Odds	SIM Odds	PAR	PAR+	Early	Mid	Late	1/4	1/2	Class Move	Move by Lengths	1st Timer (3 Max)	Bullet & Go	Back Bullet	2nd Race Parability	Jockey Win	Jockey ITM	Trainer Win	Trainer ITM
1	PORTFOLIO DURATION	9/2	999-1	NO	0.0%		▲	▲			▲	0.4					1.00	0.97	0.84	1.00
2	BELLEZZA	12-1	2-1	YES	69.4%	▲		▲	▲	▲	▲	0.8					0.56	0.72	0.65	0.89
3	SPEED SHOPPER	8-1	3-1	YES	49.2%			▲			▲	0.8					0.88	1.00	1.00	0.92
4	LAURELIN	8-1	39-1	YES	21.9%						▲	0.8					0.76	0.84	0.61	0.76
5	PRETTY PICTURE	15-1	142-1	MAYBE -1	19.2%			▲	▲	▲							0.58	0.77	0.84	1.00
6	CANKOURA	10-1	17-1	NO	36.3%												0.79	0.87	0.78	0.92
7	CITY GIRL	8-1	332-1	MAYBE -2	3.6%	▲	▲			▲	▲	0.8					0.95	0.94	0.84	1.00
8	KATHYNMARISSA	5/2	15-1	YES	41.0%			▲			▲	0.8					0.92	0.95	0.84	1.00
9	GEZORA	3-1	3-1	YES	56.7%						▲	0.8					0.72	0.74	0.62	0.77

No.	CZone %	E (CZ%)	EP (CZ%)	P (CZ%)	PC (CZ%)	C (CZ%)	ANY (CZ%)	N/A (CZ%)	1st
2	67.3%				2 (67.3%)	1 (0.0%)		6 (0.0%)	
5	59.4%				3 (36.0%)	9 (0.0%)			
8	57.6%				4 (23.7%)				
3	36.0%				5 (59.4%)				
4	23.7%				7 (21.1%)				
7	21.1%				8 (57.6%)				



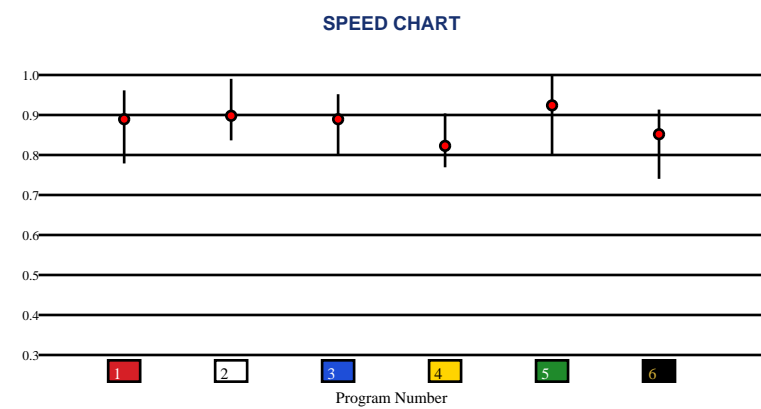


**SARATOGA | 06/05/2026 | Race 12 | 1 1/8 Miles | Dirt | OPhipps-G1 | Purse: \$500,000**

Speed # Edge (>=3)	SIM Odds		SIM Speed #		1st Call Leader		Early Pace		Late Pace		Total Pace	
1	9/5	1	98.8	3	32.8%	3	84.7	1	103.0 (+5)	1	186.0	
3	5/2	3	97.4	6	18.3%	6	83.7	6	97.7	6	181.3	
5	5-1	5	95.2	5	17.9%	1	83.0	3	95.3	3	180.0	
6	7-1	6	94.1	4	13.8%	4	81.0	5	92.3	5	173.0	
2	23-1	2	92.0	1	13.6%	5	80.7	2	91.7	4	170.7	
4	82-1	4	89.4	2	3.6%	2	75.0	4	89.7	2	166.7	

Pace / Improvement / Times																				
No.	Horse	ML Odds	SIM Odds	PAR	PAR+	Early	Mid	Late	1/4	1/2	Class Move	Move by Lengths	1st Timer (3 Max)	Bullet & Go	Back Bullet	2nd Race Parability	Jockey Win	Jockey ITM	Trainer Win	Trainer ITM
1	FULLY SUBSCRIBED	5/2	9/5	MAYBE -1	42.7%						→	0.0					1.00	1.00	0.94	0.99
2	REGALED	5-1	23-1	YES	5.3%		▲		▲	▲	→	0.0					0.41	0.71	0.63	0.76
3	ALPINE PRINCESS	4-1	5/2	MAYBE -2	34.3%			▲	▲	▲	▲	0.4					0.95	0.96	1.00	1.00
4	CASSIAR	15-1	82-1	NO	0.0%			▲	▲	▲	▲	0.4					0.58	0.79	0.55	0.97
5	NITROGEN	7/5	5-1	YES	25.3%	▲	▲	▲	▲	▲	→	0.0					0.92	0.98	0.60	0.73
6	BLESS THE BROKEN	6-1	7-1	NO	23.1%	▲		▲			→	0.0					0.56	0.68	1.00	1.00

No.	CZone %	E (CZ%)	EP (CZ%)	P (CZ%)	PC (CZ%)	C (CZ%)	ANY (CZ%)	N/A (CZ%)	1st
3	70.5%				1 (65.5%)	2 (2.1%)	3 (70.5%)		
1	65.5%				4 (49.4%)		6 (57.1%)		
6	57.1%				5 (56.0%)				
5	56.0%								
4	49.4%								
2	2.1%								





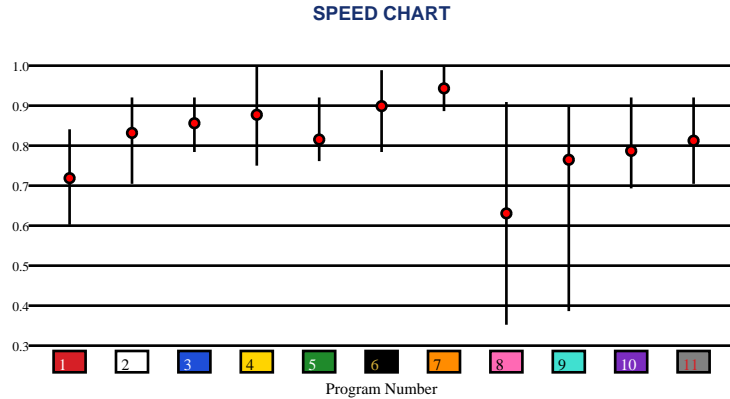
# SARATOGA | 06/05/2026 | Race 13 | 7 Furlongs | Dirt | Allowance | Purse: \$105,000

Speed # Edge (>=3)	SIM Odds		SIM Speed #		1st Call Leader		Early Pace		Late Pace		Total Pace	
7	5/2	7	82.9	8	53.1%	8	98.5 (+7)	6	89.7 (+7)	7	170.5	
8	4-1	6	80.4	2	18.0%	2	91.7	7	83.0	6	167.3	
4	5-1	4	78.9	5	11.0%	5	91.3	4	81.7	3	167.0	
6	6-1	11	77.3	1	7.2%	9	91.0	11	77.7	4	166.0	
11	10-1	2	75.9	9	4.9%	3	90.3	3	76.7	11	161.3	
2	16-1	3	75.4	7	1.9%	7	87.5	10	76.5	2	160.7	

## Pace / Improvement / Times

No.	Horse	ML Odds	SIM Odds	PAR	PAR+	Early	Mid	Late	1/4	1/2	Class Move	Move by Lengths	1st Timer (3 Max)	Bullet & Go	Back Bullet	2nd Race Parability	Jockey Win	Jockey ITM	Trainer Win	Trainer ITM
1	ANGEL GIFT	6-1	1001-1	NO	0.0%						▲	0.4					0.95	0.94	0.66	0.72
2	CLOUDY CHANCE	15-1	16-1	NO	2.8%				▲	▲	▲	0.2					0.77	0.93	0.55	0.87
3	PRINCESS WADADLI	8-1	42-1	NO	0.0%						▲	2.6					1.00	0.97	1.00	1.00
4	GRACEFUL ROSE	12-1	5-1	YES	17.1%					▲	▲	0.4					0.88	1.00	0.68	0.90
5	IRISH FORTUNE	12-1	1001-1	NO	0.0%						▲	1.0					0.64	0.75	0.27	0.70
6	GRACE AND GRIT	5/2	6-1	YES	14.6%	▲	▲	▲	▲	▲	▲	0.2					0.56	0.72	0.72	0.92
7	KARLEY B	3-1	5/2	YES	27.9%		▲	▲		▲	▲	0.6					0.62	0.77	0.67	0.79
8	FLOY JOY	10-1	4-1	NO	19.1%	▲			▲		▲	1.0					0.58	0.77	0.34	0.43
9	SABBY SUNSET	30-1	249-1	NO	0.0%		▲			▲	▲	0.8					0.46	0.70	0.43	0.77
10	MARGARITA MOLLY	12-1	166-1	NO	0.0%						▲	1.2					0.76	0.84	0.45	0.64
11	TOP OF THE TABLE	10-1	10-1	NO	3.8%						▲	0.4					0.42	0.69	0.88	1.00

No.	CZone %	E (CZ%)	EP (CZ%)	P (CZ%)	PC (CZ%)	C (CZ%)	ANY (CZ%)	N/A (CZ%)	1st
2	83.3%	5 (16.0%)	3 (15.2%)	7 (13.6%)	6 (16.7%)	1 (9.8%)	2 (83.3%)		
8	62.3%	8 (62.3%)	9 (10.6%)			4 (6.7%)			
6	16.7%	10 (2.9%)				11 (11.4%)			
5	16.0%								
3	15.2%								
7	13.6%								



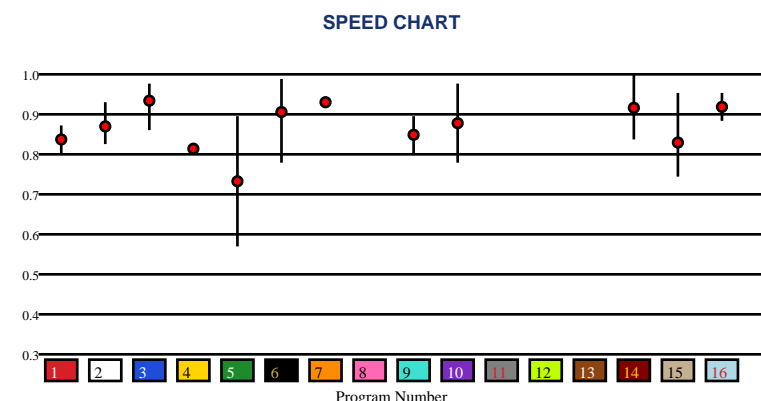


# SARATOGA | 06/05/2026 | Race 14 | 1 Mile | Inner Turf | Maiden Special Weight | Purse: \$115,000

Speed # Edge (>=3)	SIM Odds		SIM Speed #		1st Call Leader		Early Pace		Late Pace		Total Pace	
6	4-1	3	80.2	4	35.2%	4	90.0	14	87.3	16	168.0	
10	5-1	6	80.1	3	18.8%	3	87.0	6	85.0	14	167.3	
3	8-1	7	80.0	1	14.1%	1	87.0	16	84.0	3	164.7	
4	11-1	14	79.1	5	11.5%	5	86.5	10	81.0	6	164.0	
12	12-1	16	79.1	2	6.9%	2	84.7	9	80.0	2	164.0	
13	14-1	12	78.0	16	4.3%	15	84.3	2	79.3	10	163.5	

Pace / Improvement / Times																				
No.	Horse	ML Odds	SIM Odds	PAR	PAR+	Early	Mid	Late	1/4	1/2	Class Move	Move by Lengths	1st Timer (3 Max)	Bullet & Go	Back Bullet	2nd Race Parability	Jockey Win	Jockey ITM	Trainer Win	Trainer ITM
1	MOUNT SOPRIS	10-1	1001-1	NO	0.0%						▲	2.0					0.76	0.84	1.00	0.91
2	DROP SHOT	10-1	110-1	NO	0.0%			▲			▲	0.2					0.77	0.93	0.42	0.58
3	BLAZING TIGER	9/2	8-1	MAYBE -4	6.7%						▲	1.2					0.95	0.94	0.66	0.81
4	OKEFENOKEE	15-1	11-1	NO	2.8%						▼	-0.4					0.88	1.00	0.26	0.68
5	SILENT IMPACT	8-1	19-1	NO	4.4%		▲	▲	▲	▲	▲	0.6					0.59	0.67	0.63	0.70
6	LIMITED EDITION	7/2	4-1	MAYBE -3	15.6%						▲	0.6					0.62	0.77	0.91	1.00
7	BULL SHOALS	20-1	332-1	NO	0.0%			▲			▲	0.2					0.42	0.60	0.27	0.56
8	DAUNTING	15-1	15-1	NO	2.5%								2.33				0.92	0.95	0.65	0.70
9	NO RAIN NO FLOWERS	20-1	499-1	NO	0.0%						▲	1.2					0.87	0.91	0.58	0.71
10	HARRY O	6-1	5-1	MAYBE -4	14.7%	▲	▲	▲	▲	▲	▲	1.6					0.72	0.74	0.50	0.90
11	KNOWLEDGE SHARING	5-1	14-1	NO	3.0%								2.62		✓		1.00	0.97	0.86	0.91
12	HE'S A PIPER	15-1	12-1	NO	3.4%								2.96	✓	✓		0.57	0.72	0.55	0.67
13	ALLEY OOP (AE)	15-1	14-1	NO	1.9%								1.60				0.64	0.71	0.26	0.68
14	QUIET POWER (AE)	5-1	15-1	MAYBE -2	1.1%						▲	1.0					0.76	0.84	0.50	0.90
15	FRANKLIN DELANO (AE)	8-1	42-1	NO	0.0%						▲	1.2					0.72	0.74	0.65	0.70
16	C J STAR (AE)	6-1	76-1	NO	0.0%						▲	1.0					0.64	0.71	0.55	0.67

No.	CZone %	E (CZ%)	EP (CZ%)	P (CZ%)	PC (CZ%)	C (CZ%)	ANY (CZ%)	N/A (CZ%)	1st
3	86.4%			1 (18.4%)	6 (35.7%)	2 (0.0%)	3 (86.4%)	4 (0.0%)	8
6	35.7%					5 (4.1%)			11
15	24.2%					7 (0.0%)			12
1	18.4%					9 (12.4%)			13
16	18.2%					10 (0.0%)			
9	12.4%					14 (0.2%)			
						15 (24.2%)			
						16 (18.2%)			



# SMART SHEETS

[Back to Race Summary](#)

## Data Guide & Structural Interpretation Framework

### DATA FOUNDATION

---

All Smart Sheets metrics are derived from up to the horse's 10 most recent races, where applicable. Calculations are structured to emphasize recent form, reflect demonstrated performance patterns, and reduce distortion from outdated efforts.

More recent races carry greater interpretive weight within projections and structural evaluations. This ensures current condition and form cycles are prioritized over distant historical performance.

### PERFORMANCE STANDARD

---

#### PAR (Race Standard)

PAR indicates whether a horse has previously run a speed figure equal to or greater than today's race standard.

Designations include:

**'YES'** – Has met or exceeded today's PAR

**'MAYBE'** -1 to -5 – Finished within 1 to 5 speed points of today's PAR

**'NO'** – Has not approached today's PAR level

The MAYBE designation identifies horses that have demonstrated competitive proximity without fully qualifying.

#### PAR+

PAR+ represents the percentage of simulations in which the horse meets or exceeds today's PAR standard. Higher percentages indicate more frequent projected competitiveness at today's performance level. PAR+ reflects projected probability rather than past qualification alone.

#### Performance Context

Approximately 5 Speed or Pace points equate to 1 length. This conversion provides scale when interpreting speed separation, PAR proximity, pace advantage, and structural positioning. Small numeric gaps may represent marginal positional differences, while larger separations may reflect more meaningful competitive distance.

## SPEED & VALUE STRUCTURE

---

### Speed # Edge (Minimum Threshold: 3 Points)

Speed # Edge highlights meaningful separation between projected top speed figures. An edge is recognized only when a horse holds a minimum 3-point advantage over the next highest projected figure.

Using the structural scale:

3 points ≈ slightly more than half a length

5 points ≈ approximately 1 length

This threshold filters out normal figure variance and isolates measurable separation.

### SIM Odds

SIM Odds represent fair-value odds derived from simulation probability. They reflect the model's internal estimate of each horse's likelihood of winning relative to the field.

When compared to Morning Line or live wagering odds, differences between projected probability and market pricing may help identify potential mispricing or value discrepancies.

Smart Sheets does not make wagering recommendations. SIM Odds provide a structured framework for evaluating probability versus price.

### SIM Speed #

SIM Speed is a projected performance figure generated from race simulations. It estimates how fast the horse is expected to run today under modeled pace and race-flow conditions. The number is most useful when evaluated relative to the field rather than in isolation.

### Speed Chart

The Speed Chart visually displays each horse's recent speed range:

'**Top**' of line – Maximum figure

'**Bottom**' of line – Minimum figure

'**Red Dot**' – Average figure

This allows evaluation of ceiling, floor, consistency, and volatility.

## PACE PROJECTIONS

---

### 1st Call Leader Projection

This metric estimates the likelihood a horse will be on the lead at the first call. It helps define projected early race structure and potential pace pressure.

### Early & Late Pace

These columns reflect performance strength in the front half and finishing phase of the race. Evaluating these collectively helps visualize projected race flow and potential positional advantages.

### Total Pace

Total Pace represents combined early and late performance strength. Separation within this column may indicate in-race structural advantage when evaluated relative to the field.

## POSITIONAL PROFILE

---

### C-Zone (Comfort Zone)

C-Zone measures how closely today's projected race conditions align with the pace environment under which the horse produced its best competitive finish. It evaluates race fit rather than raw speed. Higher percentages indicate stronger alignment between projected structure and demonstrated success conditions.

### Pace View

Pace View categorizes horses based on positional tendencies during competitive finishes.

'E' – Front-runner

'EP' – Lead or press

'P' – Tactical stalker

'PC' – Versatile stalker/closer

'C' – Closer

'ANY' – Demonstrated multiple effective styles

'N/A' – No competitive finish within 5 lengths

'1st' – First-time starter

The percentage displayed next to each horse represents its C-Zone score, combining positional tendency with projected structural fit.

## DEVELOPMENT & MOVEMENT SIGNALS

---

### **Class Move**

Indicates whether a horse is moving up in class, moving down in class, or remaining at a similar level. Class shifts may influence competitive positioning within today's race structure.

### **First-Time Starter Rank**

Ranks debut runners using internal evaluation metrics for comparison within the field. The maximum First-Time Starter score is 3, representing the strongest relative rating among debut runners in the race.

### **Workout Indicators**

Bullet / Bullet & Go indicators reflect strong recent workouts relative to the field and may signal preparation sharpness.

### **2nd Race Parability**

Applies to lightly raced horses making their second start. Indicates whether projected development meets or exceeds today's PAR standard.

This metric may carry increased relevance when few or no horses have previously met today's PAR threshold.

## CONNECTION STRENGTH

---

Jockey and Trainer ratings are scaled within the field and color-coded to reflect relative strength.

## COLOR FORMATTING & STRUCTURAL EDGE IDENTIFICATION

---

Smart Sheets uses color formatting and structured layout to visually identify potential structural advantages, including meaningful speed separation, PAR qualification or proximity, projected pace leadership, connection strength, and simulation pricing disparities.

Interpretation of how these elements interact remains the responsibility of the user.

## DISCLAIMER

---

Smart Sheets data is compiled using information derived from reputable industry sources and publicly available racing data. All data is used in good faith and presented for informational and educational purposes. While every effort is made to ensure accuracy and completeness, errors, omissions, or data inconsistencies may occur and are unintended.

Smart Sheets is a decision-support tool and does not guarantee outcomes.

## RESPONSIBLE WAGERING NOTICE

---

Horse racing wagering involves financial risk. Users should never wager more than they can afford to lose. If you cannot afford to lose anything, you should not gamble.

If you believe you may have a gambling problem, seek assistance immediately through a licensed professional or recognized responsible gaming organization.

All wagering decisions are solely the responsibility of the user.